

---

# HARD TRI-FOLD TONNEAU COVER

---

## INSTALLATION INSTRUCTIONS

### CONTENTS

---

- (1) Hard Tri-Fold Tonneau Cover
- (4) Latch Handles
- (2) Thumb Screws
- (2) Rail Clamps
- (1) Weather Strip
- (1) Battery Powered LED Light

### TOOLS REQUIRED

---

Razor Knife

---

**STEP 1**



Remove the tonneau cover from the box. Identify the forward most panel of the tri-fold. The forward most panel is the portion that has the clip receiver.

**STEP 2**



Center the tonneau cover between the bed rails. Pull the threaded rod perpendicular to the tonneau cover. Evenly space the rods on both sides.

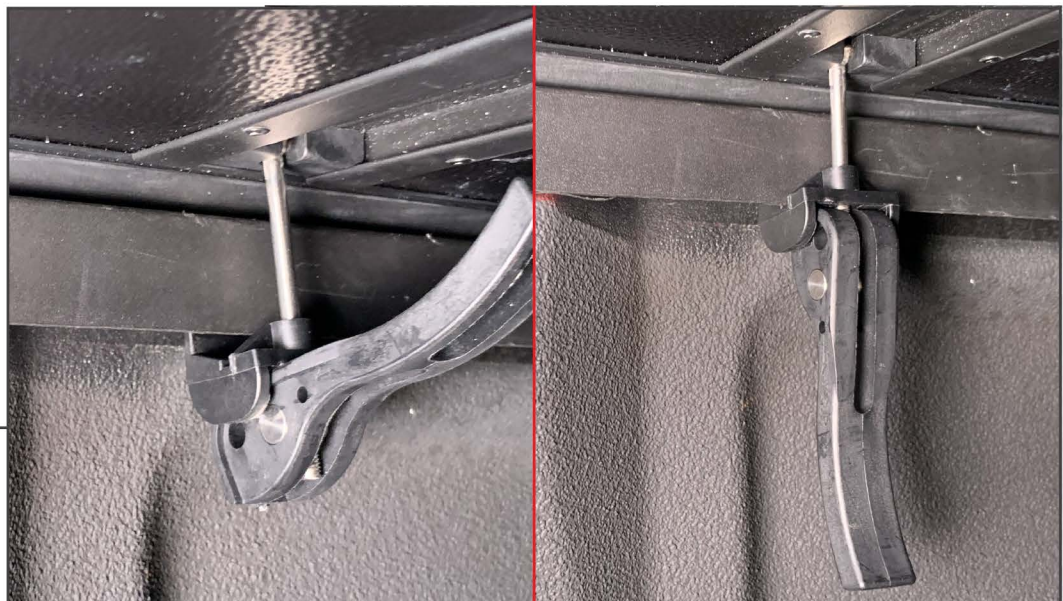
---

**STEP 3**



Place the supplied plastic clamps onto the threaded rods. Then screw on the supplied thumb screws and shown. Ensure the clamp are hand tight against the under-side of the bed rails. \*\*Do not over tighten the thumb screw, over tightening them may break the clamp. Repeat on both side. Then unclip and unfold the tonneau cover.

**STEP 4**



Screw the supplied clamp handles onto the pre-installed threaded rods. The photo on the left shows the handle “unlocked”. The clamp hooks to the under-side of the bed rail. Thread the handle on far enough so that the clamp will engage with the bed rail. Then, gently pull the handle down to “lock” it in place. \*\*Do not over tighten the handles, damage may occur. Repeat the process at all (4) locations.

---

**STEP 5**



With the tonneau cover installed, loosen and re-position as needed for best fit.

---

**STEP 6**



When not in used, secure the panels using the installed clips. When folding back the tonneau cover ensure the latch handles are secured into the handle channels as shown.

---

**STEP 7**



Optional: Install the supplied weather stripping around the tail gate to help reduce water intrusion.

**STEP 8**



Optional: Install the supplied bed light. Ensure the mounting surface is clean and free of dirt/debris prior to removing the double sided mounting tape. Installation is now complete.