

R107252

2009-17 Ram 1500
Rear Coil Spring Spacer
1.5"

Step by step instructions and checklist: Use the proper tools and safety equipment to perform all work. Torque all fasteners to proper specifications and double check work. Align your vehicle after installation.



Support rear suspension and remove rear trac bar bolt



Disconnect upper sway bar end links.



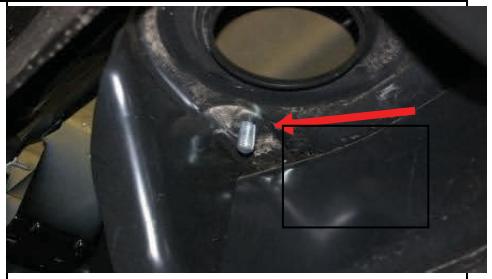
Disconnect ABS lines to avoid damage during installation.



Remove lower shock mounting hardware.



Carefully lower axle, remove spring and upper rubber isolator



Use provided hardware to fasten new spacer and tighten.



Reinstall OE isolator and coil spring, raise suspension.



Reattach shocks, trac bar, sway bar end links, and ABS lines

Final Checks & Adjustments

Post Installation Warnings: Once the vehicle is lowered to the ground, check all parts which have rubber or urethane components to insure proper torque. Torque wheels to factory specs. Move vehicle backwards and forwards a short distance to allow suspension components to adjust. Turn the front wheels completely left then right and verify adequate tire, wheel, brake line, and ABS wire clearance. Test and inspect steering, brake and suspension components for tightness and proper operation. Inspect brakes hoses and ABS lines for adequate slack at full extension. Failure to perform the post inspection checks may result in vehicle component damage and/or personal injury or death to driver and/or passengers. Test drive vehicle and re-check the torque of all fasteners and re-torque wheels on vehicle.

Wheel Alignment/Headlamp Adjustment:

It is necessary to have a proper and professional wheel alignment performed by a certified alignment technician. Align the vehicle to factory specifications. It is recommended that your vehicle alignment be checked after any off-road driving. In addition to your vehicle alignment, for your safety and others, it is necessary to check and adjust your vehicle headlamps for proper aim and alignment.

Vehicle Re-Torque and Safety Inspection:

Upon completion of all services and adjustments performed on your vehicle, and within 50 miles of driving, check to ensure all fasteners and hardware are properly torqued to specification as noted in the vehicles factory service manual or the torque chart included.