

Installation Instruction

<u>Key To Components</u>
A. 1 ea. Grille
B. 1 ea. Harness
<u>Tools required</u>
Ratchet
10mm Socket
Plastic clip removal tool or similar tool

Full Replacement Baja Grille w/LED Lighting

PART NUMBER R109757
FITS Dodge Ram 1500
2009-2012

A



B



Product shown on Dodge Ram 1500.

ELECTRICAL INSTALLATION



This grill comes complete with LED light which need to be connected to a power source. Failure to properly make these connections could result in damage to the LED lights and/or your vehicle and may result in personal injury. If you are not qualified to make the proper connections, we highly recommend that you contact an installation expert to complete the connections.



Please take a few minutes to read and thoroughly familiarize yourself with the installation procedures outlined in this manual. Following the steps as outlined will save you time and help reduce mistakes. Once the instructions are reviewed, if you feel that you are not capable of safely installing the parts seek the help of a qualified installation expert to help you complete the job. The manufacture is in no way responsible for any personal injury or vehicle damage that may occur during the installation.

NOTES ON INSTALLATION

Please read and understand all instructions prior to beginning the installation process.

Pre-fit all panels as you proceed with the installation before attempting to bolt into position. This will enable you to understand exactly how the part is intended to fit onto vehicle.

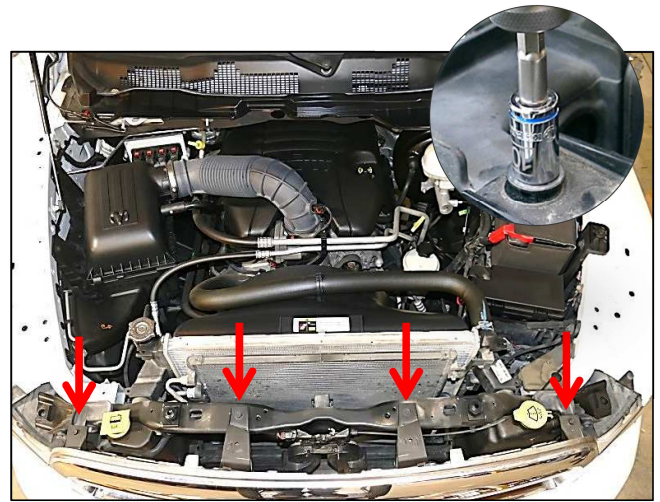
Do NOT over-tighten screw.

If the instructions call for you to save and re-install parts set them aside in a protected area so as not to damage them.

REMOVING FACTORY GRILLE

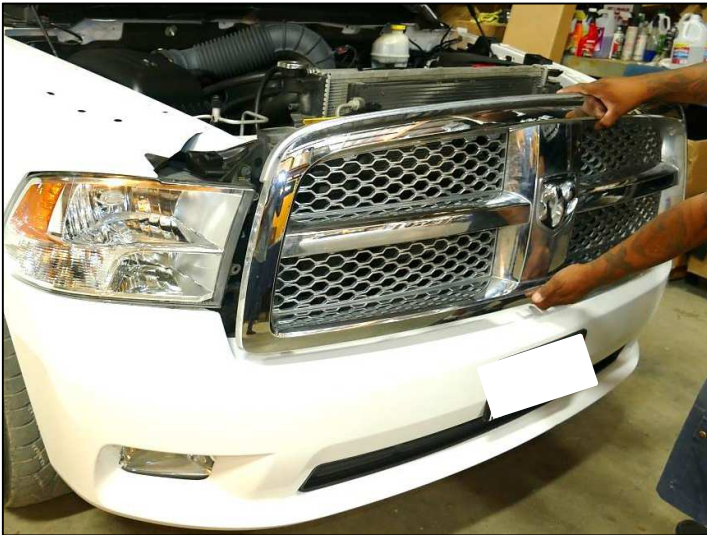


Step 1
Open vehicles hood. Using a plastic rivet removal tool locate and remove 6 factory plastic push clips securing the plastic radiator shroud to the vehicle. Remove plastic radiator shroud from vehicle. Set plastic shroud and hardware aside for reinstallation.

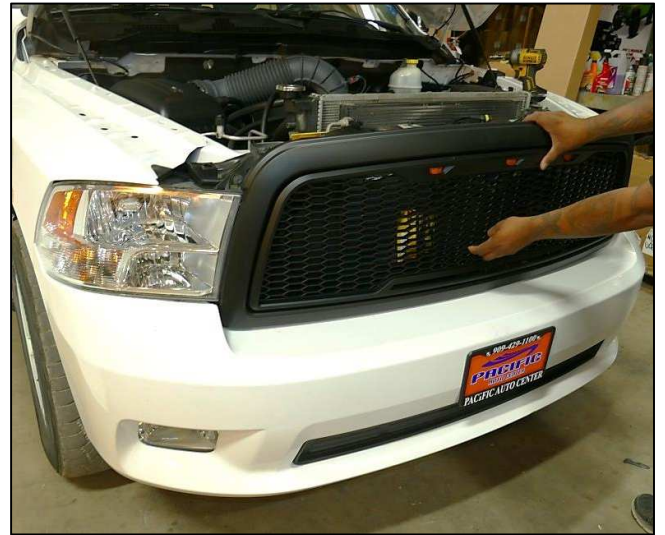


Step 2
Using a 10mm socket locate and remove 4 factory hex head bolts securing the grille to the vehicle. Set hardware aside for reinstallation.

INSTALLING GRILLE ONTO VEHICLE



Step 3
Firmly grab and pull factory grille off of vehicle. Discard factory grille.



Step 4.
Place supplied grille (A) onto vehicle as shown above. Install grill onto vehicle by reversing steps 1 & 2 in the removal process.

Proceed to make electrical connections for the LED lights. If you are not qualified to make the proper connections, we highly recommend that you contact an installation expert to complete the connections.

This completes the installation.