

HD Front Bumper w/ Winch Mount & LED Lighting Installation Instructions

PART NUMBER R109761

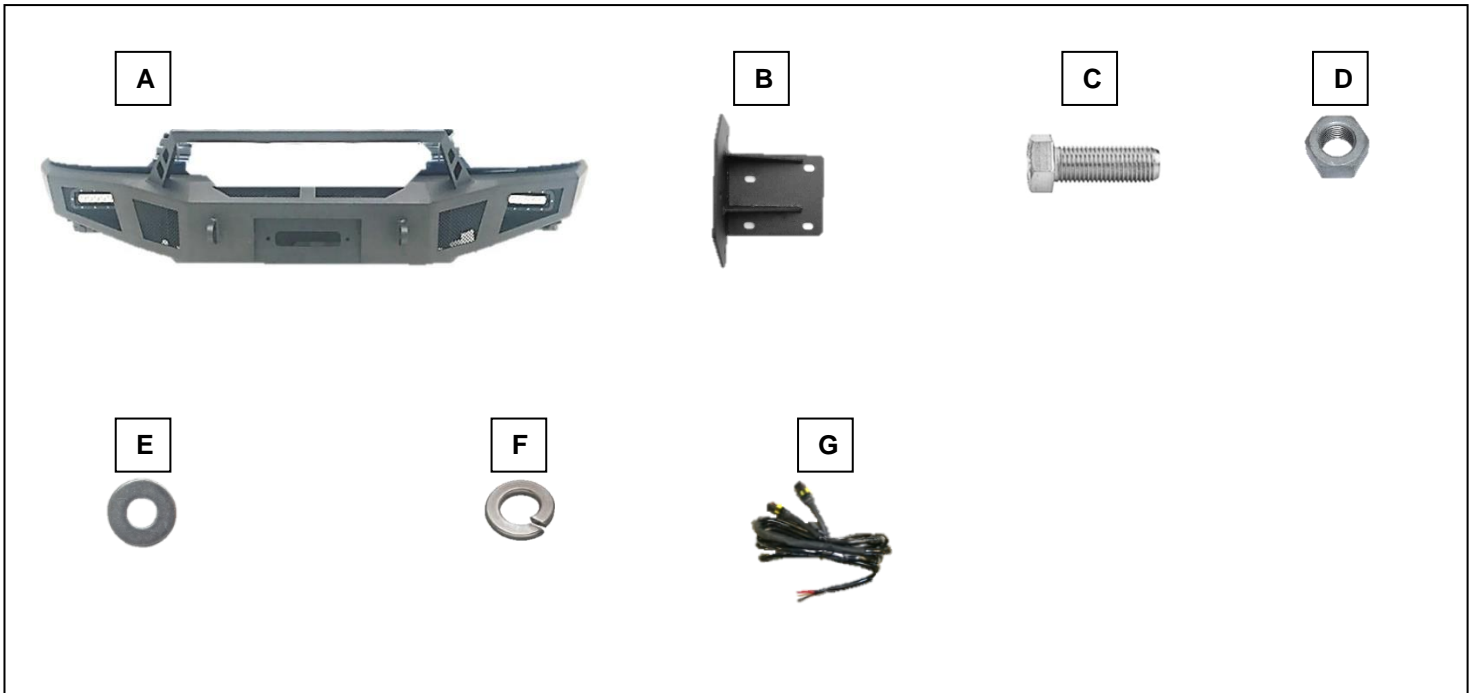
FITS Dodge Ram 1500 13-18

KEY TO COMPONENTS

- A. 1 ea. Bumper
- B. 2 ea. Mounting bracket
- C. 14 ea. M12x1.75x35mm hex head bolt
- D. 14 ea. Hex head nut M12x1.75
- E. 28 ea. M12 Flatwasher
- F. 14 ea. M12 Splitwasher
- G. 1 ea. Wire harness

TOOLS NEEDED

- 10mm socket
- 15mm socket
- 18mm socket
- Ratchet
- 7 mm socket
- Plastic remover tool or similar



Please take a few minutes to read and thoroughly familiarize yourself with the installation procedures outlined in this manual. Following the steps as outlined will save you time and help reduce mistakes. Once the instructions are reviewed, if you feel that you are not capable of safely installing the parts seek the help of a qualified installation expert to help you complete the job. The manufacture is in no way responsible for any personal injury or vehicle damage that may occur during the installation.

ELECTRICAL INSTALLATION

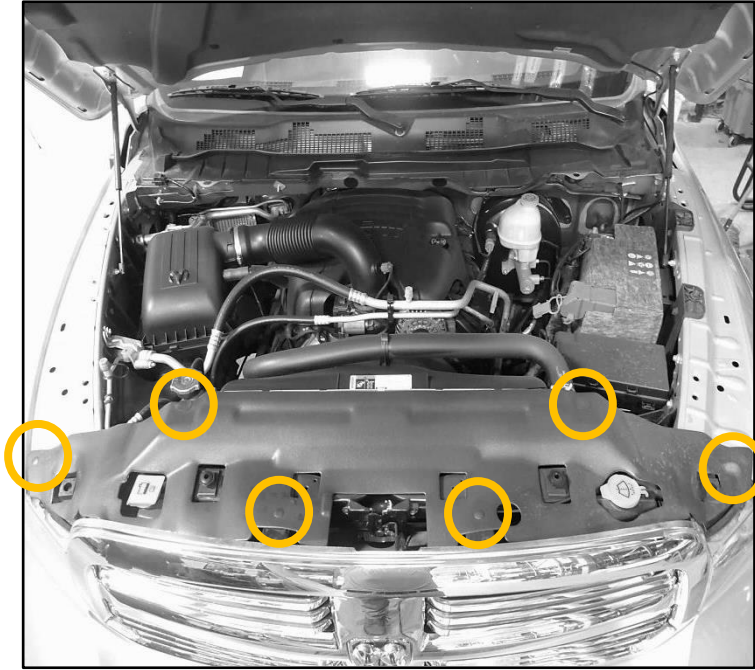


This bumper comes complete with LED lights which need to be connected to a power source. Failure to properly make these connections could result in damage to the LED lights and/or your vehicle and may result in personal injury. If you are not qualified to make the proper connections, we highly recommend that you contact an installation expert to complete the connections.

California Proposition 65 Warning!

This product may include one or more chemical known to the State of California to cause cancer and birth defects or other reproductive harm. For more information go to www.P65Warnings.ca.gov.

FACTORY GRILLE REMOVAL



Step 1.
Open vehicles hood. Using a plastic clip removal tool or similar tool locate and remove 6 factory plastic push clips securing the plastic radiator shroud to the vehicle. Remove plastic radiator shroud from vehicle. Set plastic shroud and hardware aside for later use.



Step 2.
Using a 10mm socket locate and remove 4 factory hex head bolts securing the grille onto the vehicle. Set hardware aside for later use.

FACTORY BUMPER CAP REMOVAL

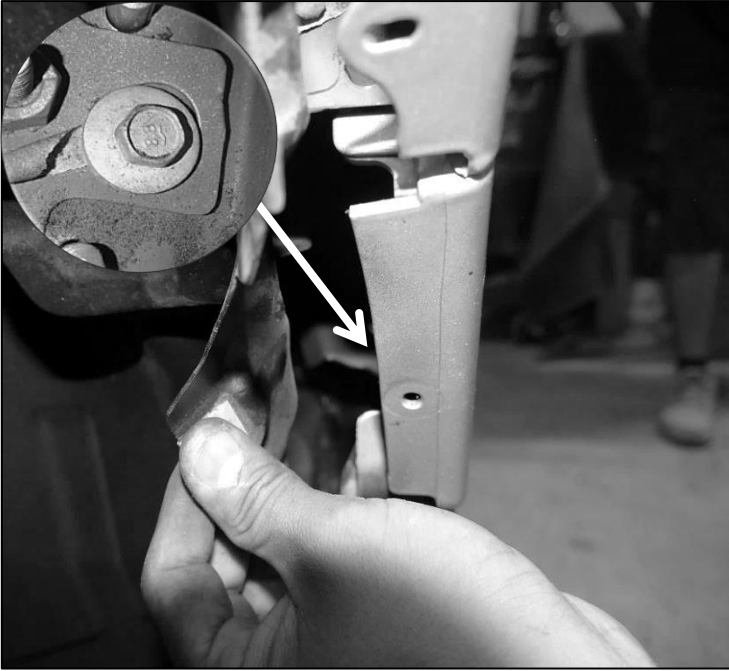


Step 3.
Firmly grab and pull factory grille off of vehicle. Set factory grille aside for later use.



Step 1.
Proceed to the inside of the vehicle wheel well. Using a 7mm socket locate and remove one factory hex head bolt holding the body colored top cap onto vehicle. Set hardware aside for reinstallation. Repeat step for other side.

FACTORY BUMPER CAP REMOVAL continued

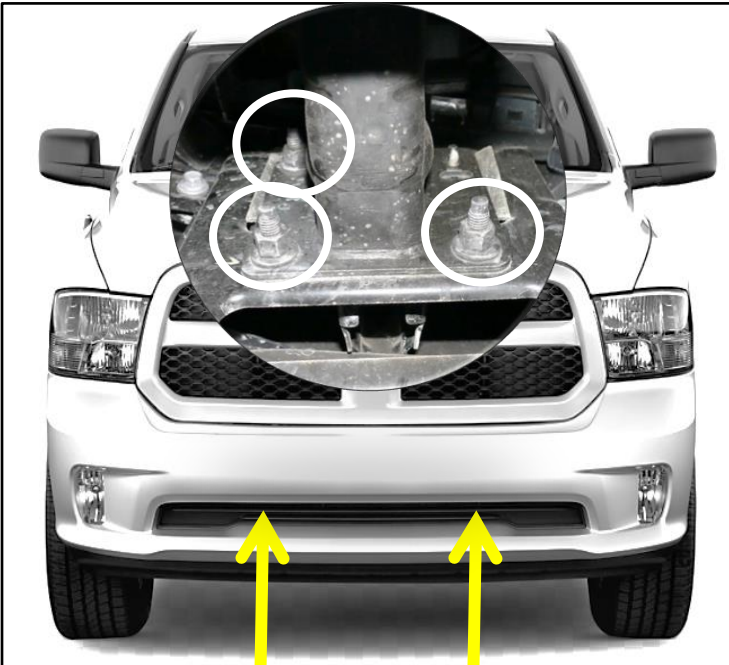


Step 2.
Pull back inner fender and upper trim piece to allow access behind the inner fender to remove one factory bolt, securing the headlight trim piece onto vehicle. Using a 10mm socket remove bolt. Set aside for later use. Repeat step 1-2 for other side.

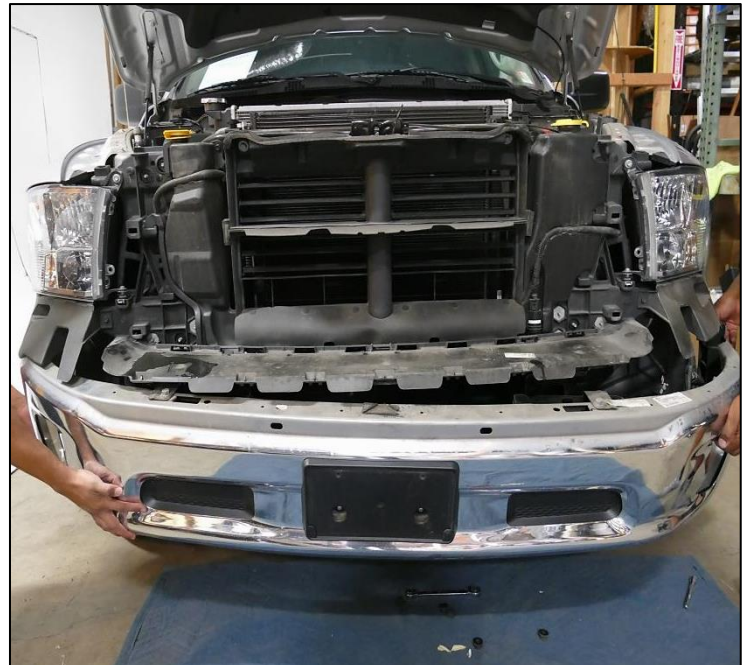


Step 3.
Remove body colored top cap by firmly pulling on one side of the vehicle working your way to the other side. Be careful not to damage body colored top cap. Set body colored cap and hardware aside for reinstallation.

FACTORY BUMPER REMOVAL



Step 1.
Working underneath the vehicle. Using a 15mm socket locate and remove 3 factory bolts holding the bumper onto vehicle. Set hardware aside for later use. Repeat step for other side.



Step 2.
With help from an assistant remove factory bumper from vehicle. Discard factory bumper.

FACTORY BUMPER REMOVAL continued

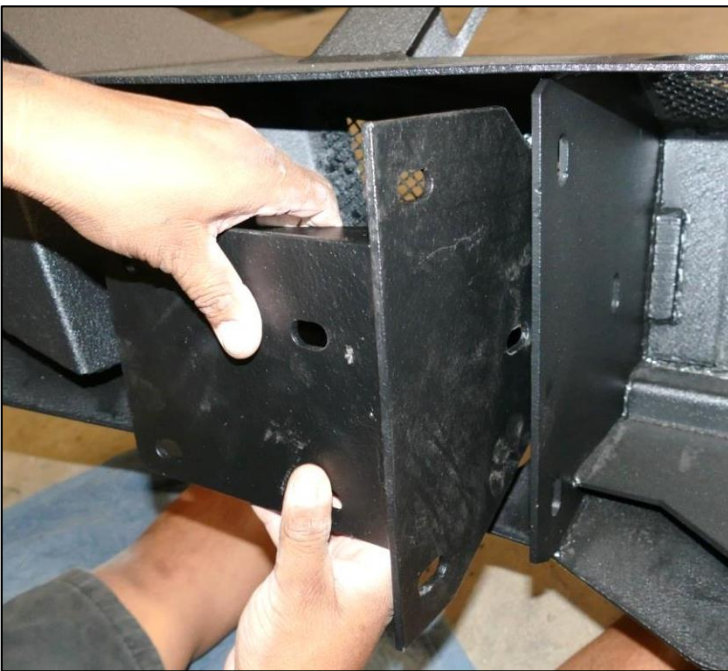


Step 3.
Using a 10mm socket locate and remove 3 factory bolts holding the plastic bracket under the vehicle head light. Discard plastic bracket and factory hardware. Repeat step for other side.



Step 4.
Using a 10mm socket locate and remove 4 factory bolts holding the center plastic onto vehicle. Remove center plastic. Discard center plastic.

INSTALLING NEW BUMPER

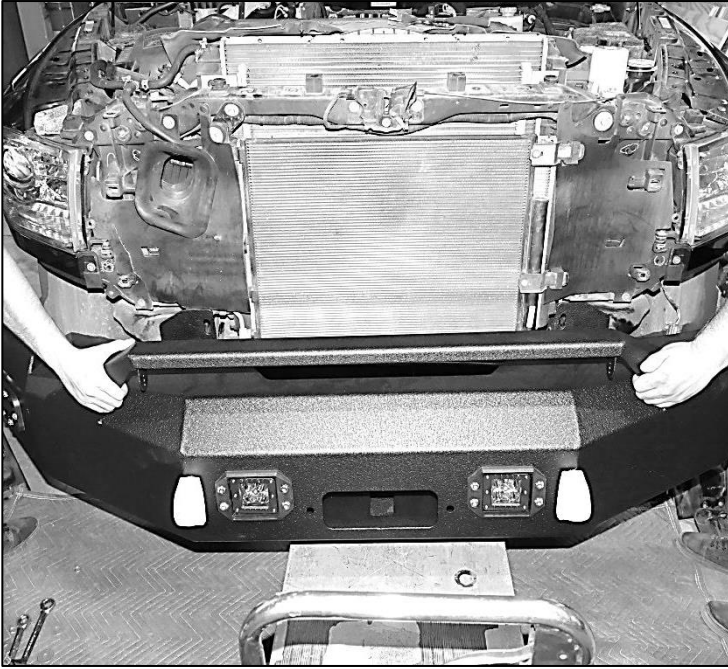


Step 1.
Place supplied mounting bracket (B) onto supplied bumper (A) as shown. Line up the mounting bracket holes with the holes in the bumper.



Step 2.
Place supplied M12x1.75x35mm hex head bolt (C) with supplied M12 flat washer (E) through the holes in the mounting brackets and through the holes in the bumper. Repeat step for remaining bolts. Place a supplied M12 flat washer (E) and supplied M12 split washer (F) at the end of bolt. Start a supplied M12x1.75 hex head nut at the end of bolt. Tighten down bolt using a 18mm socket. Repeat step for remaining nuts. Repeat step 1-2 for other side of bumper.

INSTALLING NEW BUMPER continued



Step 3.
With help from an assistant place new bumper (A) onto vehicle.



Step 4.
Place supplied M12x1.75x35mm hex head bolt (C) with supplied M12 flat washer (E) through the hole in the bumper and through the hole in the vehicle frame. Place a supplied M12 flat washer (E) and supplied M12 split washer (F) at the end of bolt. Start a supplied M12x1.75 hex head nut (D) at the end of bolt. Tighten down using a 18mm socket. Repeat step for remaining bolt. Repeat step for other side of bumper.



Step 5.
Reinstall factory grill back onto vehicle by reversing steps 1-3 in the removal process.

Proceed to make electrical connections for the LED lights. If you are not qualified to make the proper connections, we highly recommend that you contact an installation expert to complete the connections.

This completes the installation process.

Page 5