

# Wire Mesh Grille Instruction

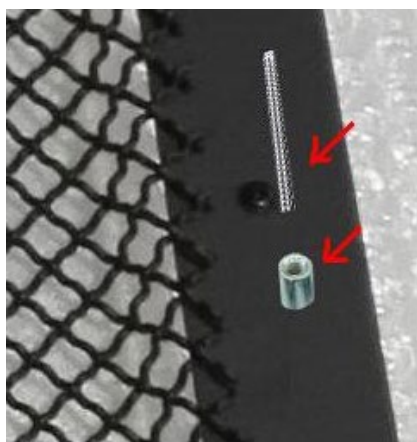
## Tools Required: Socket Set / Adjustable Wrench

**NOTE:** Be Careful not to scratch the grills Surface.

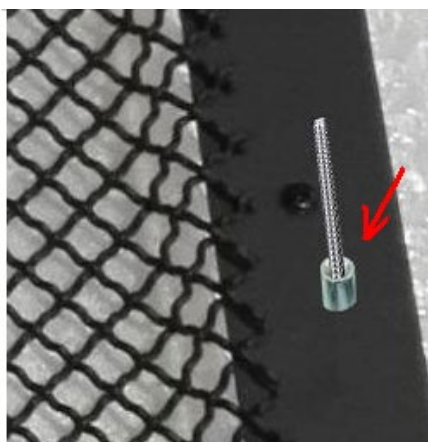
(1) Before installation, please check the new mesh grille fitment for your vehicle model.

Open the box, take out the new mesh grille, and place it over the OE grille shell to test, to be sure it is match with your vehicle.

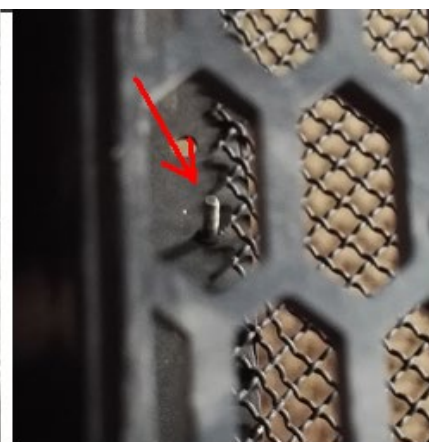
(2) Open the package, take out the studs, and place each stud into the welded nut on the mesh grille frame see below.



PC.1



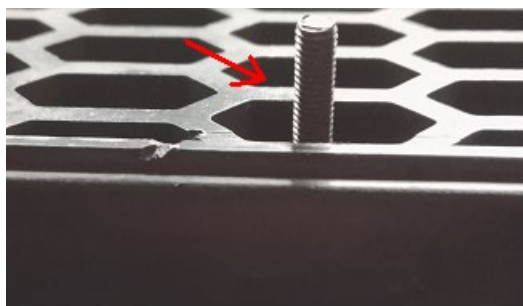
PC.2



PC.3

(3) Put the mesh grille into opening grille shell, the stud will reach the grille shell honeycomb holes rear as above show.

(4) Place nut on the stud, screw the nut tight, but it need light tight for each nut, then adjust the mesh grille to center, now tight each nut is ok.



PC.5



PC.6

(5) Reinstall grille shell is complete for installation.

The instruction here is for your reference only. You may need to bend the billet grille bars or tabs a little bit to adjust to fit. We strongly recommend the professional installer for best result. We are not responsible for any damage caused by the installation. Thank you for choosing our product!