

# Tubular Rear Bumper (09-18 RAM)

## CONTENTS:

- (1) Rear Bumper
- (2) Bumper Brackets
- (2) Mesh Grille Inserts
- (2) Fog Lights - **Optional**
- (1) Fog Light Harness - **Optional**
- (2) Bolt Plates
- (4) M12x1.75x40mm Bolts
- (4) M12 Flat Washers
- (4) M12 Lock Washers
- (4) Rear Camera Rubber Plugs
- (2) LED License Plate Lights
- (4) Splice Connectors
- (10) Zip Ties

## TOOLS REQUIRED:

- 15, 16, 18, 21mm Sockets
- 3/8" or 1/2" Ratchet & Extensions
- 10mm Wrench
- Trim Panel Removal Tool
- Flat Head Screw Driver
- Allen Wrench



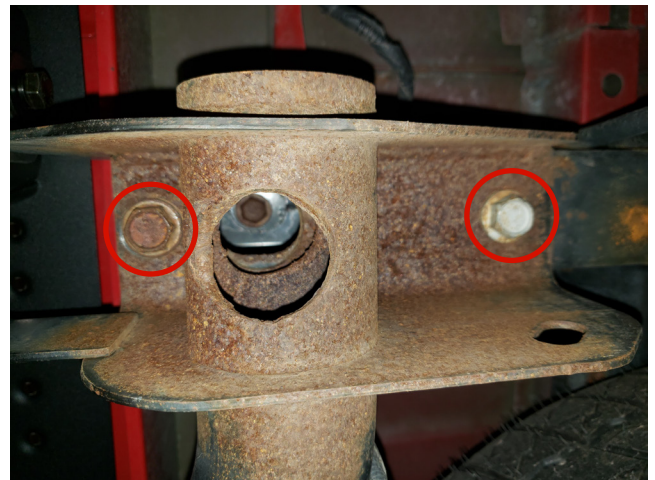
**STEP 1** // Unplug the factory license plate light harnesses, and the trailer plug connector and pull away from the bumper. If equipped unplug and remove the factory backup sensors.



**STEP 2** // Push the red tab outwards, and press the black tab to unplug the license plate light harness. Unplug both sides.

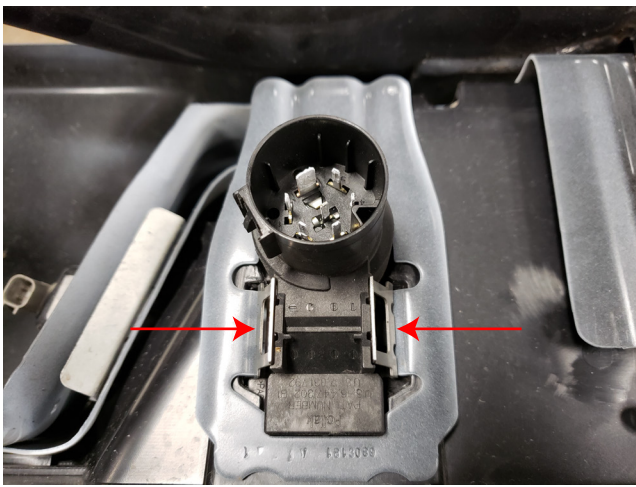


**STEP 3** // From underneath the vehicle, locate and remove the (2) 21mm bolts from the upper frame rail mount. Do the same on the opposite side. **\*\*Note:** Factory hardware will be reused.



**STEP 4** // From under the vehicle, remove the (2) 21mm bolts from the lower frame rail mount. Do the same on the opposite side. Carefully remove the bumper from the vehicle. **\*\*Note:** Factory hardware will be reused.

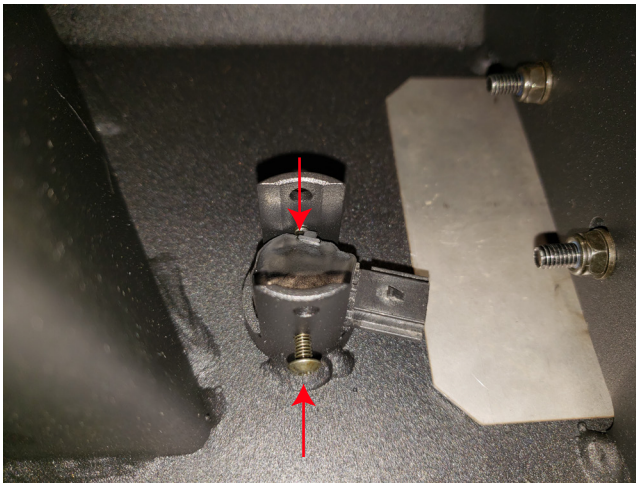




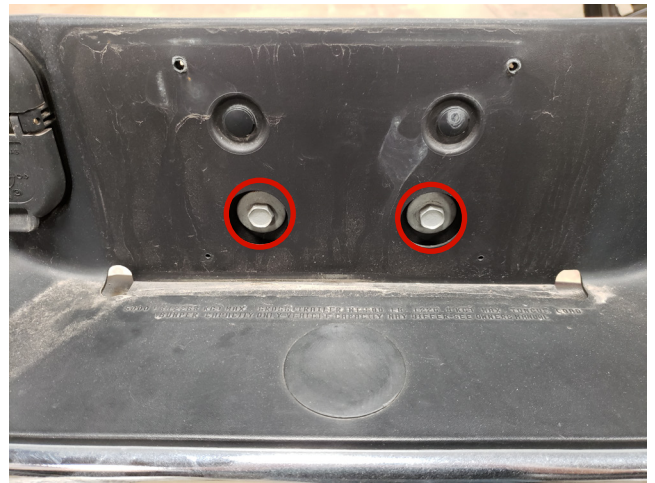
**STEP 5** // Using a flat head screw driver, push in the metal tabs on the trailer plug connector and remove from the factory bumper. Transfer to new bumper.



**STEP 8** // If choosing not to use the LED fog lights, install the (2) mesh grille inserts into the bumper using the (2) M6 flat washers, lock washers, and nuts.



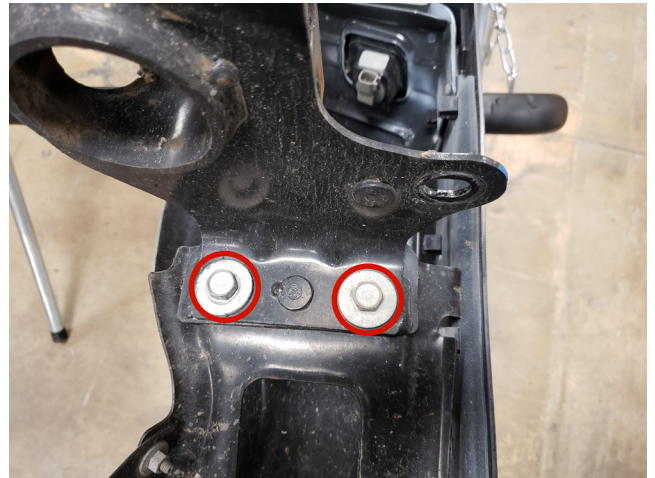
**STEP 6** // If equipped re-install the factory reverse sensors w/ the rubber grommet flush to the outer face of the bumper. **\*\*Note:** The factory trim bezel does not get re-used. Using the supplied 4mm screws to apply slight pressure to either side of the sensor. Over tightening of the screws can cause sensor damage. For vehicles w/o sensors install the supplied rubber plugs.



**STEP 9** // Located behind the license plate, remove the (2) 16mm bolts securing the center of the bumper mount to the bumper.

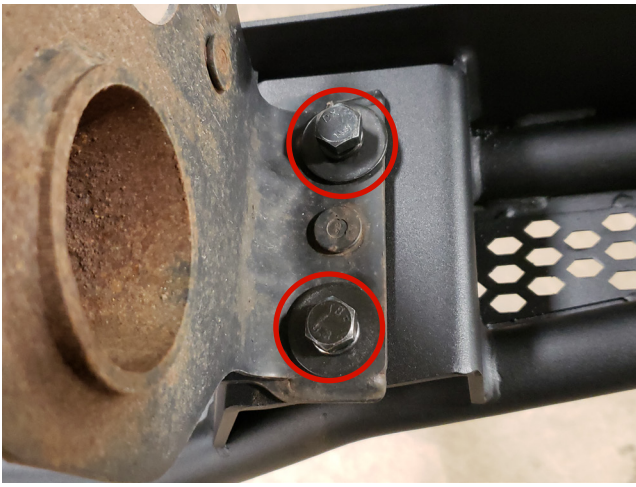


**STEP 7** // **Optional Light:** If choosing the LED fog light option, install the (2) LED Fog lights into the bumper using the (2) M8x1.25x30mm bolts, flat washers, lock washers, and nuts.



**STEP 10** // Remove the (2) 16mm bolts on each side securing the bumper mount to the factory rear bumper. Remove bumper mount.





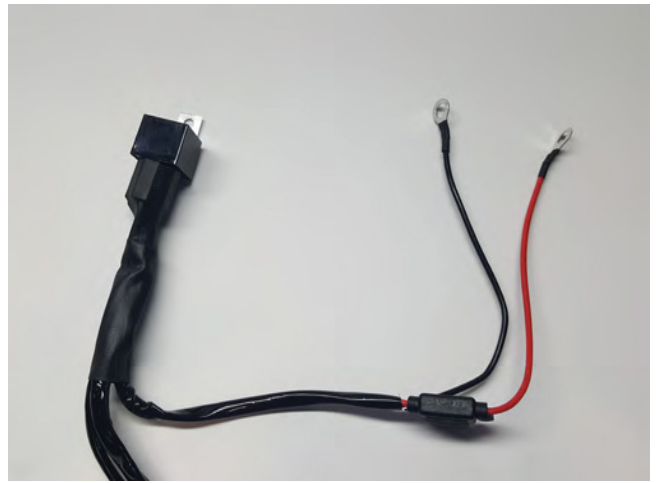
**STEP 11** // Attach the bumper mount to the new bumper using the (1) bolt plate, and (2) M12x1.75x40mm bolts, lock washers, and flat washers on each side.



**STEP 14** // **Optional Light Wiring:** Connect the (2) LED Fog lights into the supplied harness. Be sure to zip tie the access wiring away from any damage that could occur.



**STEP 12** // Attach the prerunner bumper to the vehicle using the factory hardware from Steps 3 & 4. Be sure to center the bumper, and adjust height of bumper to desired location. Then reinstall the trailer harnesses. If equipped, reinstall the backup camera harnesses.



**STEP 15** // **Optional Light Wiring:** Install the Red 12+ volt wire to the positive battery terminal. Connect the Black ground wire to the negative battery terminal. Mount the fuse in a safe location away from any damage that could occur. Tuck away any extra wiring.



**STEP 13** // Insert the supplied license plate light through the license plate, and into the prerunner bumper. Secure using the washer and nut. Splice the license plate lights into the factory license plate light harnesses using the supplied splice connectors.



**STEP 16** // **Optional Light Wiring:** Route the on/off switch to the interior of the vehicle using a suitable body grommet. Mount the switch in the desired location. Zip tie any extra loose wiring away from any damage that could occur. Installation is now complete.