



FENDER TRIM

Installation Instructions

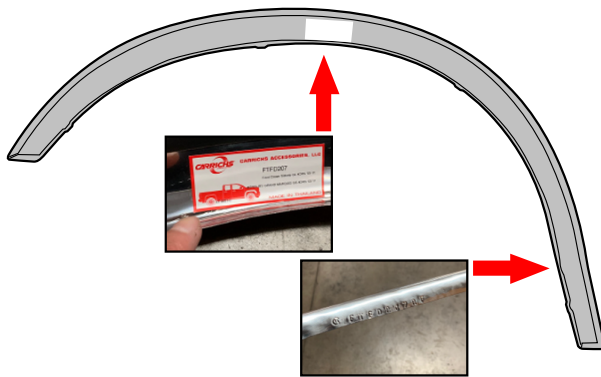
7545 Rosecrans Ave. | Paramount, CA 90723 | Toll: 866-303-4714 | Fax: 562-724-9668

Email: info@carrichs.com | www.carrichs.com



Prop. 65 Warning for California Residents

WARNING : This product may contain chemicals known to the State of California to cause cancer, birth defects, or other reproductive harm.



NOTE : Each fender trim is carefully marked with part number and its placement on the vehicle. Placement marks can be found from sticker on back of fender trim and/or stamped on the inner lip of the trim.

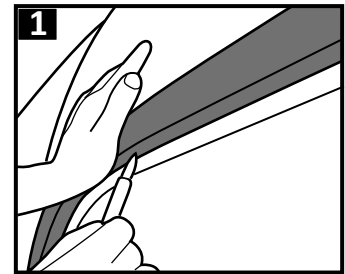
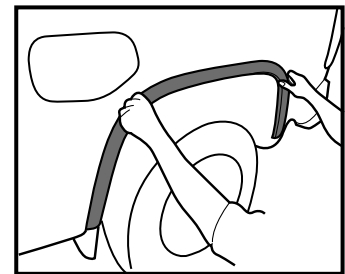
RF = Right Front LF = Left Front
RR = Right Rear LR = Left Rear

Place fender trim over vehicle's fender to ensure correct part and proper fitment prior installation process.

Front Fender Installation Instructions:

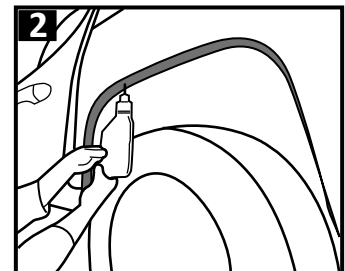
Step 1.

With the help of another person, align fender trim to desired position and firmly press trim toward vehicle's body. Using holes on the fender trim and mark inner fender lip of reference points with a permanent marker.



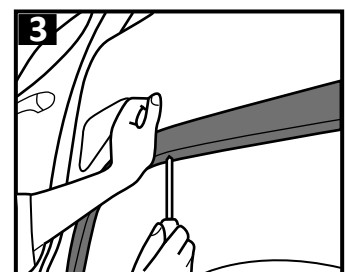
Step 2.

Remove fender trim and drill necessary pilot holes using 7/64 drill bit at marked location from previous step.



Step 3.

With the help of another person, hold fender trim over fender and drive the supplied stainless-steel screws.



Rear Fender Installation Instructions:

Repeat step 1-3.