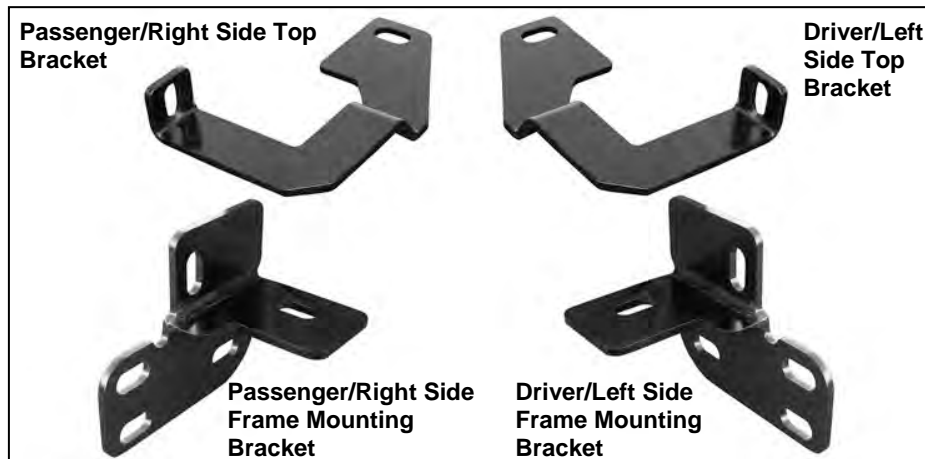


PARTS LIST:

1	Grille Guard	20	12mm x 32mm OD x 3mm Flat Washers
1	Driver/Left Frame Mounting Bracket	10	12mm Nylon Lock Nuts
1	Passenger/Right Frame Mounting Bracket	2	10-1.50mm x 25mm Button Head Allen Bolts
1	Driver/Left Top Bracket	4	10mm x 20mm OD x 2mm Flat Washers
1	Passenger/Right Top Bracket	2	10mm Nylon Lock Nuts
10	12-1.75mm x 30mm Hex Bolts		



PROCEDURE:

- 1. REMOVE CONTENTS FROM BOX. VERIFY ALL PARTS ARE PRESENT. READ INSTRUCTIONS CAREFULLY BEFORE STARTING INSTALLATION. ASSISTANCE IS RECOMMENDED. CUTTING MAY BE REQUIRED**
- Starting on the driver side-front of the vehicle, locate the opening in the lower bumper cover at the front end of the frame. Select the driver side Frame Mounting Bracket. Remove the tow hook if equipped. **NOTE:** This Grille Guard may not be compatible with the factory tow hooks and they may not be reinstalled. See note below.
- Insert (1) 12mm x 30mm Hex Bolt with (1) 12mm Flat Washer through the opening in the front of the frame and out through the hole in the bottom of the frame. Line up the driver side Frame Mounting Bracket with the 12mm Hex Bolt. Secure with (1) 12mm Flat Washer and (1) 12mm Nylon Lock Nut. Repeat this step for the 2nd mounting location on the outer side of the frame. Do not tighten hardware at this time. **IMPORTANT:** On some vehicles, it may be necessary to remove the lower plastic portion of the bumper to gain access to the ends of the frame rails. The indented pockets in the bumper also may need to be cut out to allow the Mounting Brackets to pass through.

NOTE: On some model years, the tow hooks may be reinstalled but must be switched, driver side to passenger side to clear the Frame Mounting Bracket. Depending on model year, the plastic bumper cover may not clear the tow hook when switched side to side as pictured on Page 2 & 3. If the tow hook will fit properly, re-use the factory tow hook hardware to bolt the Frame Mounting Brackets to the vehicle. Otherwise, do not reinstall the tow hooks. It is up to the installer to determine if the tow hooks can be properly reinstalled and some trimming of the back of the plastic bumper cover may be required.

- Repeat Step 2 for the passenger side Frame Mounting Bracket installation. Snug but do not tighten the hardware at this time.
- Next, open the hood on the vehicle and locate the cross member behind the bumper cover and grille. Locate and remove the factory hex bolt on the top of the cross member. Insert the driver

side Top Bracket through the opening in the bumper and bolt it to the crossmember with the factory hardware. Leave loose at this time.

6. Repeat Step 4 for passenger side Top Bracket installation.
7. With assistance, place the Grille Guard up to the inside of the Frame Mounting Brackets. Secure the Grille Guard to the Brackets with (6) 12mm x 30mm Hex Bolts, (12) 12mm Flat Washers and (6) 12mm Nylon Lock Nuts. Do not tighten hardware at this time.
8. Next, move to the driver side Top Bracket installed in Step 4. Line up the Top Bracket with the hole in the Grille Guard upright. Insert (1) 10mm Button Head Bolt with (1) 10mm Flat Washer through the upright and Top Bracket. Secure with (1) 10mm Flat Washer and (1) 10mm Nylon Lock Nut. Repeat this step on the passenger side Top Bracket. Do not tighten at this time.
9. With the hood open, align, center and adjust the Grille Guard properly and tighten all Mounting Bracket and Support Bracket hardware. Carefully close the hood and check for clearance. Adjust the Brackets for fit as necessary.
10. Do periodic inspections to the installation to make sure that all hardware is secure and tight.

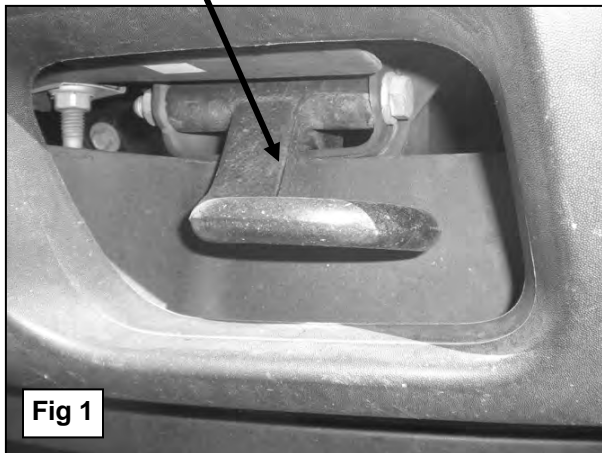
To protect your investment, wax this product after installing. Regular waxing is recommended to add a protective layer over the finish. Do not use any type of polish or wax that may contain abrasives that could damage the finish.

For stainless steel: Aluminum polish may be used to polish small scratches and scuffs on the finish. Mild soap may be used also to clean the Grille Guard.

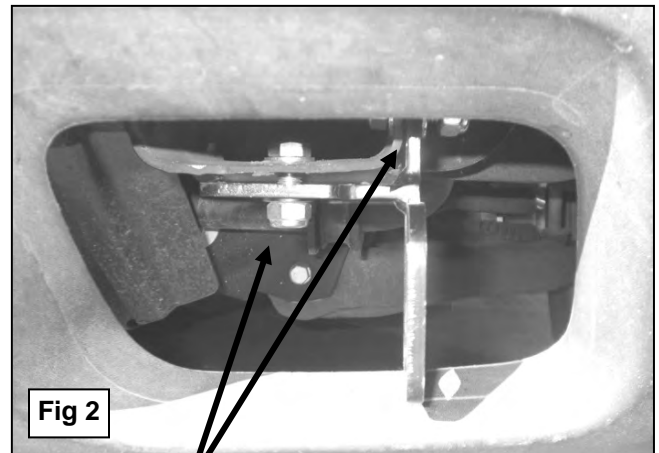
For gloss black finishes: Mild soap may be used to clean the Grille Guard.

Driver Side Installation Pictured

Remove tow hooks if equipped



NOTE: On vehicles without tow hooks, the area above may be covered by an indented plastic panel. Cut or remove the fill panel as required to gain access to the front of the frame rail to allow bottom brackets to pass through.



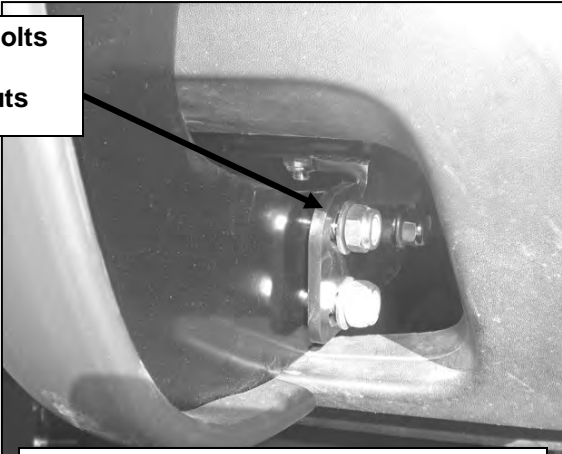
(2) 12mm x 30mm Hex Bolts
(4) 12mm Flat Washers
(2) 12mm Nylon Lock Nuts

Driver Side Installation Pictured



(5) 12mm x 30mm Hex Bolts
(10) 12mm Flat Washers
(5) 12mm Nylon Lock Nuts

(Fig 3) Pictured from behind bumper



(Fig 4) Pictured from in front of bumper

Passenger Side Installation Pictured

Factory bolt, passenger side bumper opening pictured

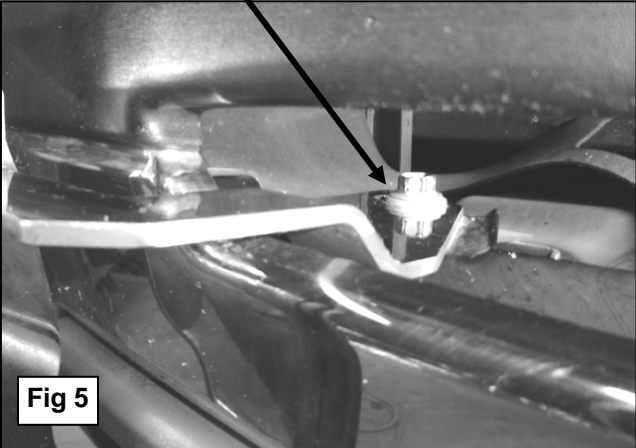


Fig 5

10mm x 25mm Button Head Bolt
(2) 10mm Flat Washers
10mm Nylon Lock Nut



(Fig 6) Passenger side Top Mounting Bracket installation pictured



Complete installation