

HD Front Bumper w/ Winch Mount & LED Lighting

Installation Instructions

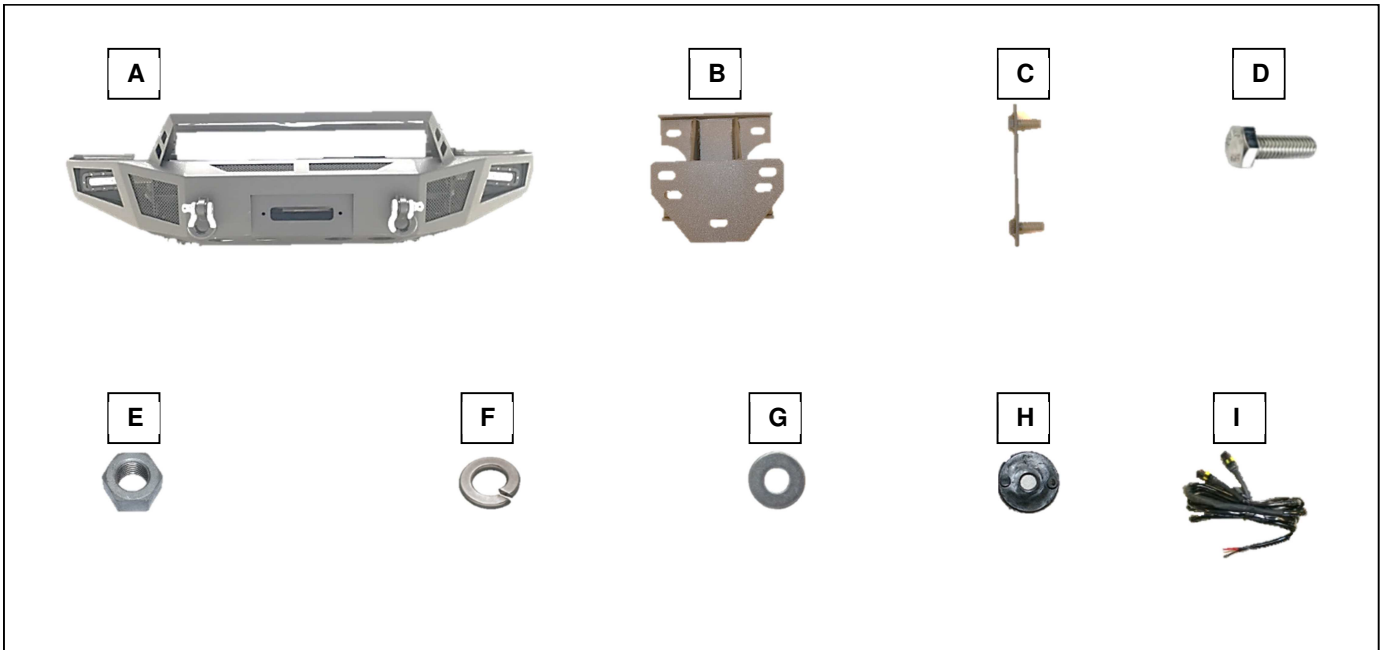
PART NUMBER S112233
FITS Chevy Silverado 1500
16-18

KEY TO COMPONENTS

- A. 1 ea. Bumper
- B. 2 ea. Mounting bracket
- C. 4 ea. U bracket
- D. 4 ea. Hex head bolts M12x1.75x35mm
- E. 12 ea. Hex head nuts M12x1.75
- F. 12 ea. Split Washer M12
- G. 12 ea. Flat washer M12
- H. 2 ea. LED washer
- I. 2 ea. LED washer
- I. 1 ea. Wire harness

TOOLS NEEDED

- 10mm socket
- 15mm socket
- 18mm socket
- Ratchet
- 7 mm socket
- Plastic remover tool or similar



Please take a few minutes to read and thoroughly familiarize yourself with the installation procedures outlined in this manual. Following the steps as outlined will save you time and help reduce mistakes. Once the instructions are reviewed, if you feel that you are not capable of safely installing the parts seek the help of a qualified installation expert to help you complete the job. The manufacture is in no way responsible for any personal injury or vehicle damage that may occur during the installation.

ELECTRICAL INSTALLATION



This bumper comes complete with LED lights which need to be connected to a power source. Failure to properly make these connections could result in damage to the LED lights and/or your vehicle and may result in personal injury. If you are not qualified to make the proper connections, we highly recommend that you contact an installation expert to complete the connections.

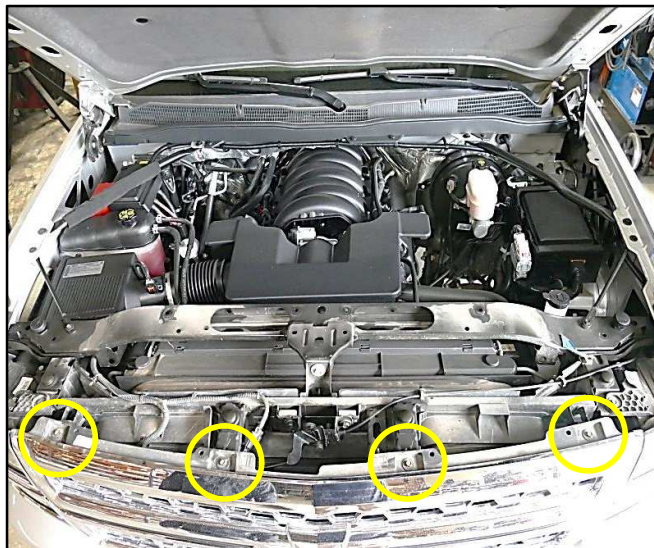
California Proposition 65 Warning!

This product includes a power cord which may contain lead a chemical known to the State of California to cause cancer and birth defects or other reproductive harm. For more information go to www.P65Warnings.ca.gov.

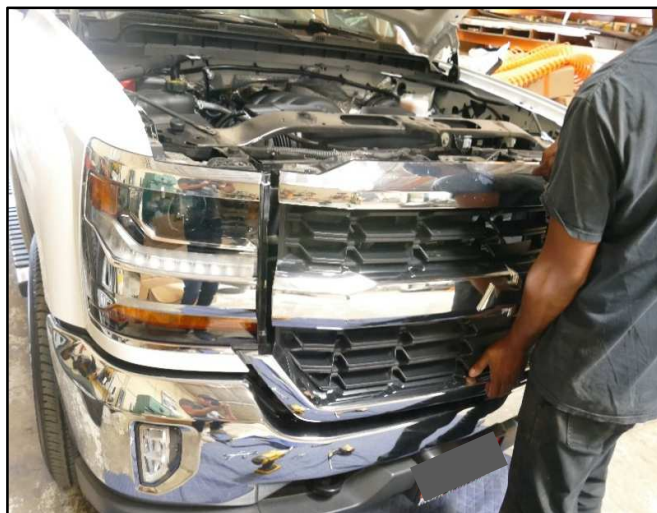
FACTORY BUMPER REMOVAL



Step 1
Using a plastic rivet removal tool locate and remove 12 factory clips holding the radiator shroud onto vehicle. Remove plastic radiator shroud from vehicle. Set shroud and hardware aside for reinstallation.



Step 2
Using a 10mm socket locate and remove 4 factory bolts securing factory grille onto vehicle. Set hardware aside for reinstallation.



Step 3
Firmly grab and pull factory grille off of vehicle. Place factory grille aside for later use.

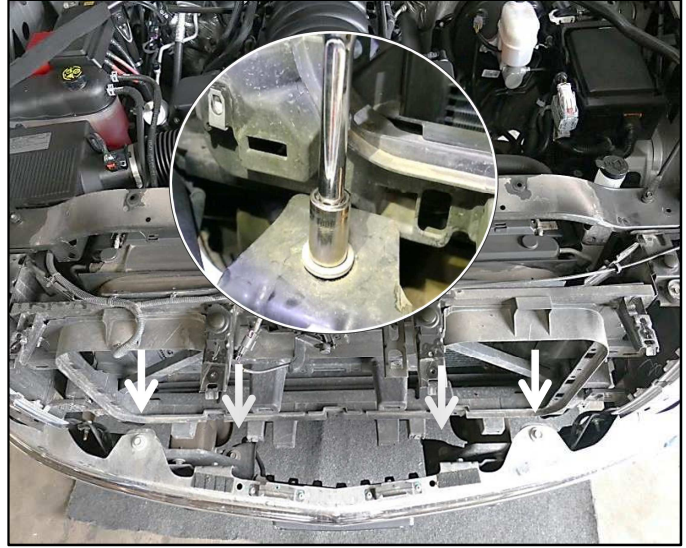


Step 4
Working underneath the vehicle. Using a 15mm socket locate and remove the two bolts mounted onto the side of the bumper as shown. Discard factory hardware.

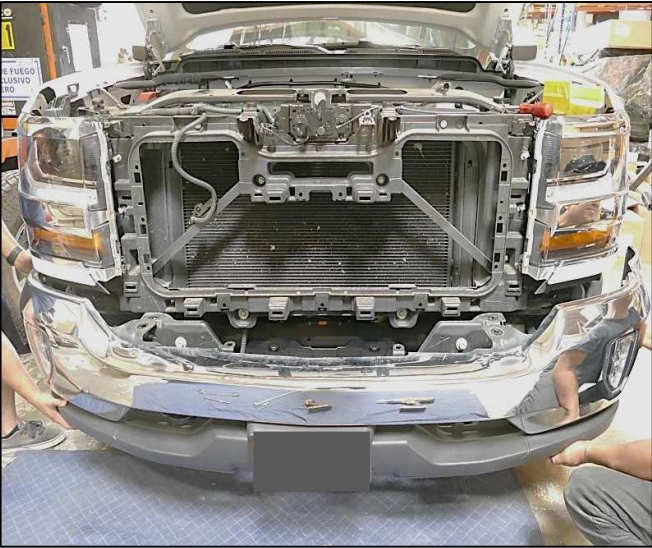
FACTORY BUMPER REMOVAL continued



Step 5
Unplug the OEM fog light wiring harness. Using a fastener pry tool remove the wiring harness connector attached to the back of the bumper.



Step 6
Using a 18mm socket locate and remove four factory bolts holding the bumper onto vehicle. Discard factory hardware.



Step 7
With help from an assistant remove factory bumper from vehicle. Set factory bumper aside in a protected area.



Step 8
Using a 15mm socket locate and remove 3 factory bolts holding the factory mounting bracket onto vehicle. Remove factory mounting bracket. Discard mounting bracket. Set hardware aside for reinstallation. Repeat step for other side mounting bracket.

FACTORY BUMPER REMOVAL continued



Step 9

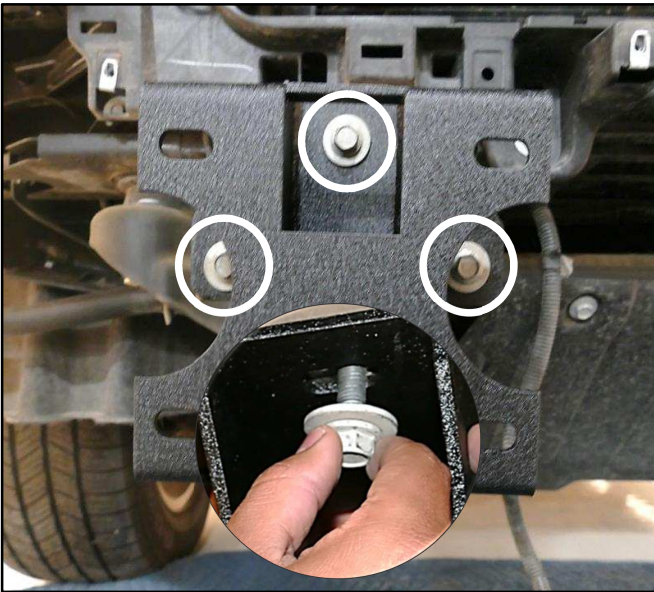
Using a 18mm socket locate and remove two bolts holding the factory tow hook onto vehicle. Discard factory tow hook and factory hardware. Repeat step for other tow hook.

INSTALLING MOUNTING BRACKETS



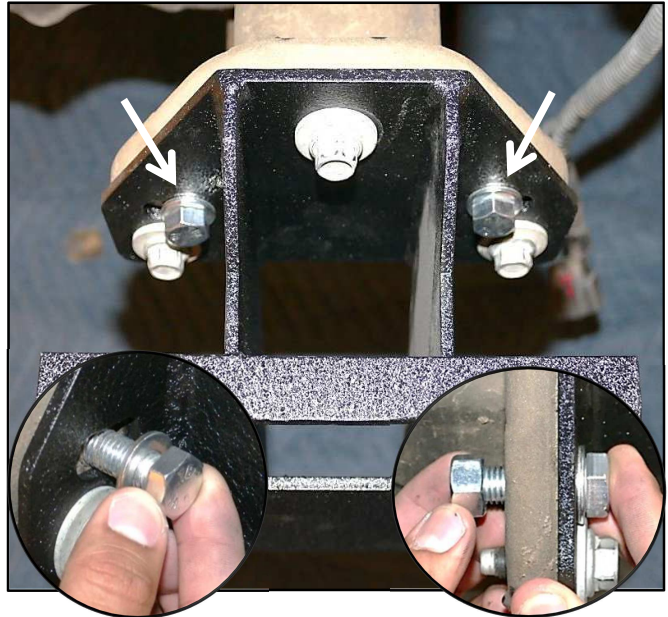
Step 1

Locate and place supplied mounting bracket (B) onto vehicle. Line up the holes in the mounting bracket with the holes in the vehicle frame.



Step 2

Reinstall all three factory bolts previously removed in step 12 in the removal process. Tighten down all bolts using 15mm socket.



Step 3

Place supplied M12x1.75x35mm hex head bolt (D) with supplied M12 flat washer (G) through the hole in the mounting bracket and through the hole in the vehicle frame. Place a supplied M12 flat washer and supplied M12 split washer (F) at the end of bolt. Start a supplied M12x1.75 hex head nut (E) at the end of bolt. Tighten down using a 18mm socket. Repeat step for remaining bolt. Repeat step for other side mounting bracket.

INSTALLING NEW BUMPER



Step 1

With help from an assistant place supplied bumper (A) onto vehicle. Line up the bumper the holes with the holes in the mounting bracket.



Step 2

Working underneath the vehicle. Place supplied U bracket (C) from behind the bumper hole and through the hole in the mounting bracket. Repeat same steps for other side. Repeat step for other side mounting bracket.



Step 3

Place a supplied M12 flat washer (G) and supplied M12 split washer (F) onto bolt. Start a supplied M12x1.75 hex head nut (E) at the end of the bolt. Tighten down using a 18mm socket. Repeat step for remaining bolts. Repeat step for other side mounting brackets.



Step 4

Reinstall factory grill back onto vehicle by reversing steps 1-3 in the removal process.

Proceed to make electrical connections for the LED lights. If you are not qualified to make the proper connections, we highly recommend that you contact an installation expert to complete the connections.

This completes the installation process.

Page 5