

HD Front Bumper w/Winch Mount & LED Lighting

Installation Instructions

PART NUMBER S112234
FITS Chevy Silverado 1500

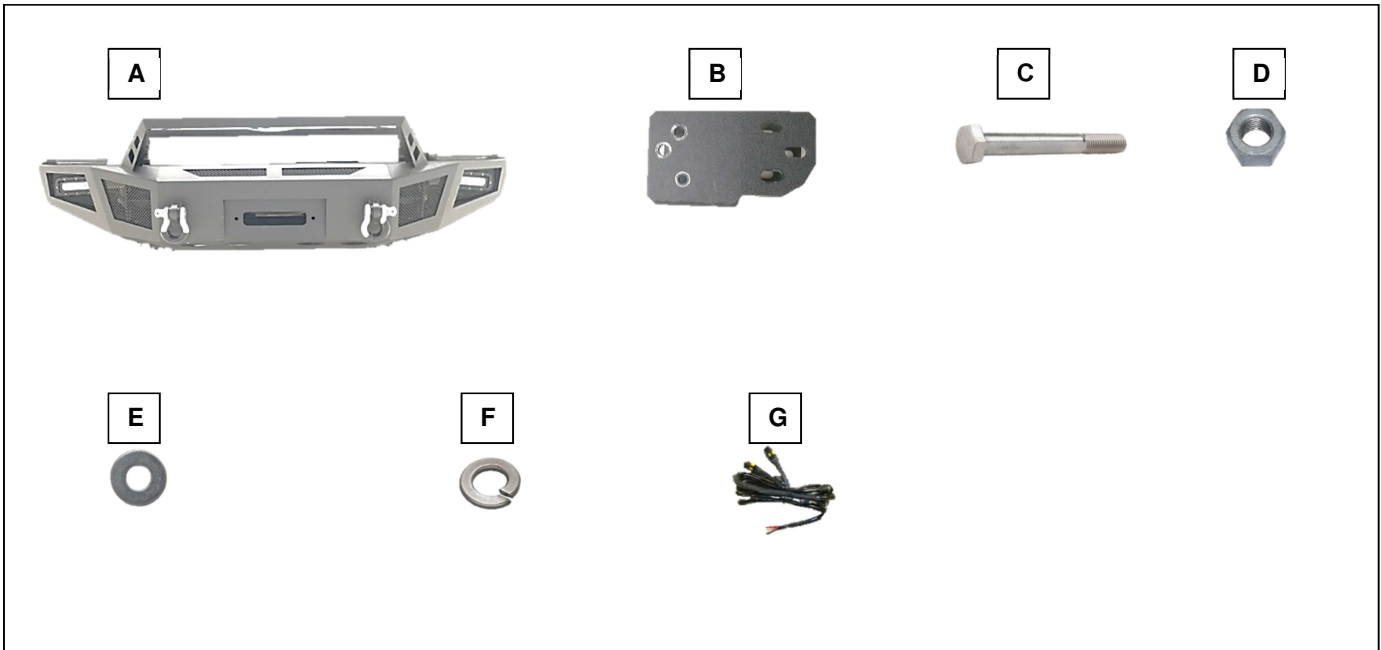
07-13

KEY TO COMPONENTS

- A. 1 ea. Bumper
- B. 2 ea. Mounting bracket
- C. 6 ea. M12x1.75x135mm hex head bolt
- D. 6 ea. Hex head nut M12x1.75
- E. 12 ea. M12 Flatwasher
- F. 6 ea. M12 Splitwasher
- G. 1 ea. Wire harness

TOOLS NEEDED

- 10mm socket
- 15mm socket
- 18mm socket
- Ratchet
- 7 mm socket
- Plastic remover tool or similar



Please take a few minutes to read and thoroughly familiarize yourself with the installation procedures outlined in this manual. Following the steps as outlined will save you time and help reduce mistakes. Once the instructions are reviewed, if you feel that you are not capable of safely installing the parts seek the help of a qualified installation expert to help you complete the job. The manufacture is in no way responsible for any personal injury or vehicle damage that may occur during the installation.

ELECTRICAL INSTALLATION



This bumper comes complete with LED lights which need to be connected to a power source. Failure to properly make these connections could result in damage to the LED lights and/or your vehicle and may result in personal injury. If you are not qualified to make the proper connections, we highly recommend that you contact an installation expert to complete the connections.

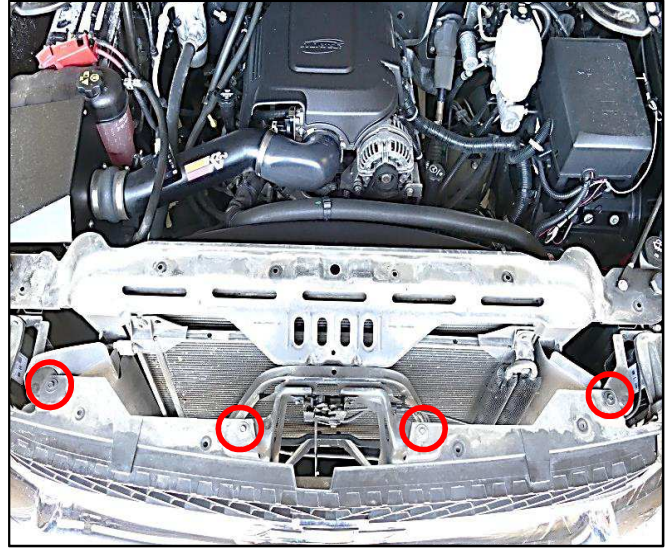
California Proposition 65 Warning!

This product includes a power cord which may contain lead a chemical known to the State of California to cause cancer and birth defects or other reproductive harm. For more information go to www.P65Warnings.ca.gov.

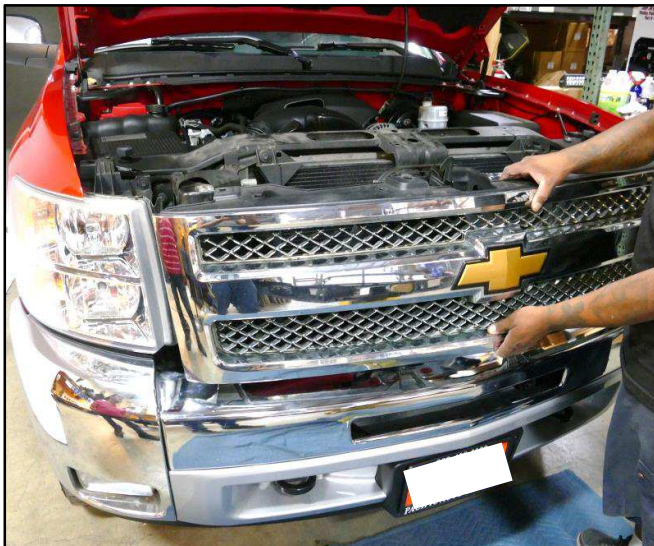
FACTORY BUMPER REMOVAL



Step 1
Using a plastic rivet removal tool locate and remove 8 factory clips holding the radiator shroud onto vehicle. Remove plastic radiator shroud from vehicle. Set shroud and hardware aside for reinstallation.



Step 2
Using a 10mm socket locate and remove 4 factory bolts securing factory grille onto vehicle. Set hardware aside for reinstallation.

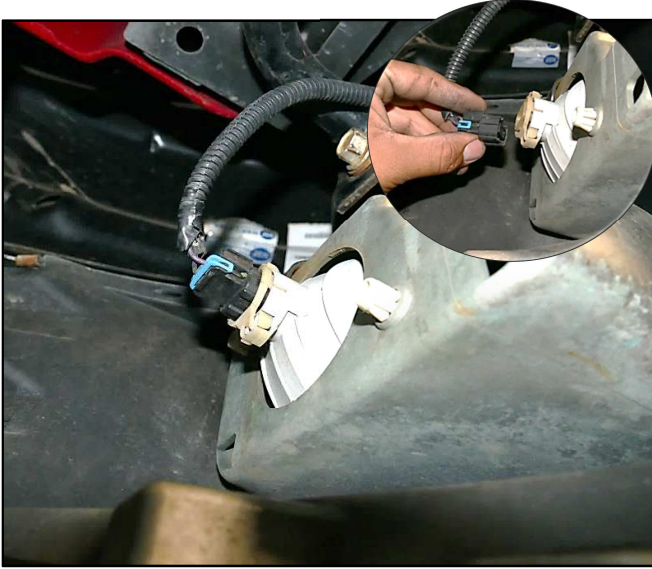


Step 3
Firmly grab and pull factory grille off of vehicle. Place factory grille aside for later use.



Step 4
Using a 18mm socket locate and remove factory bolts holding the bumper onto vehicle. Discard factory hardware.

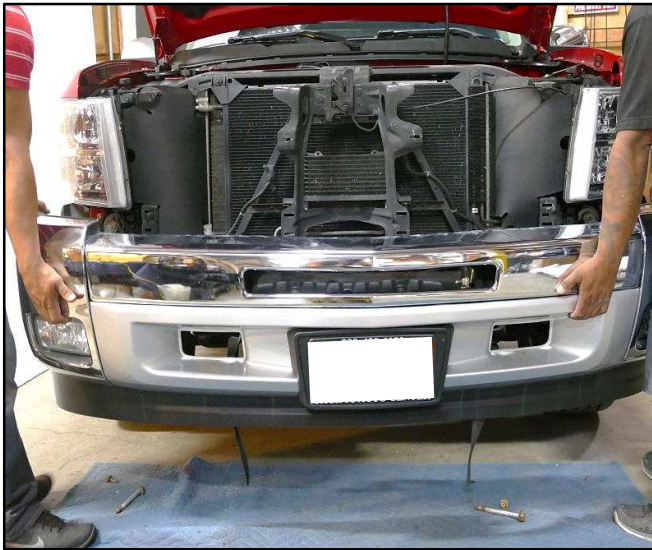
FACTORY BUMPER REMOVAL continued



Step 5
Working underneath the vehicle. Unplug the fog light wiring harness. Repeat step for other side.



Step 6
Using a 15mm socket locate and remove factory bolt mounted onto the side of the bumper. Discard factory hardware. Repeat step for other side of bumper.



Step 7
With help from an assistant remove factory bumper from vehicle. Set factory bumper aside in a protected area.



Step 8
Using a 18mm socket locate and remove 2 factory bolts holding the factory mounting bracket onto vehicle. Remove factory mounting bracket. Discard mounting bracket. Set hardware aside for reinstallation. Repeat step for other side mounting bracket.

FACTORY BUMPER REMOVAL continued



Step 9
Using a 18mm socket locate and remove two bolts holding the factory tow hook onto vehicle. Discard factory tow. Set hardware aside for later use. Repeat step for other tow hook.

INSTALLING MOUNTING BRACKETS



Step 1
Locate and place supplied mounting bracket (B) onto vehicle. Line up the holes in the mounting bracket with the holes in the vehicle frame.

INSTALLING NEW BUMPER

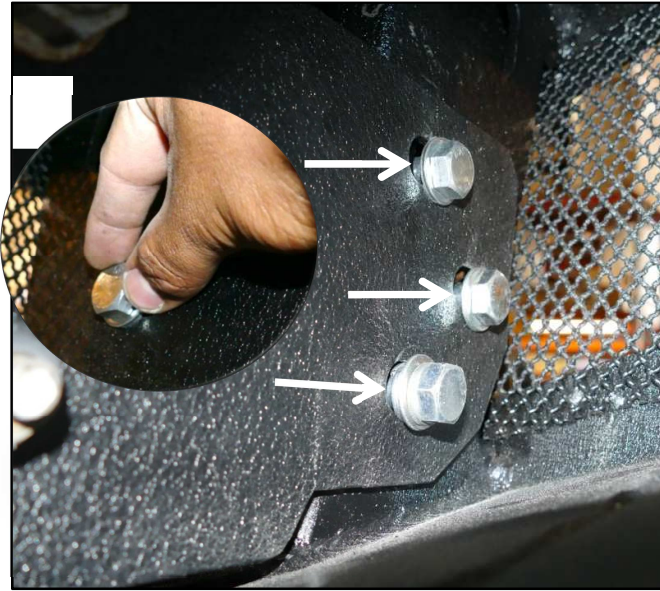


Step 2
Reinstall factory hardware previously removed. Tighten down all bolts using 18mm socket. Repeats step for other side mounting bracket.



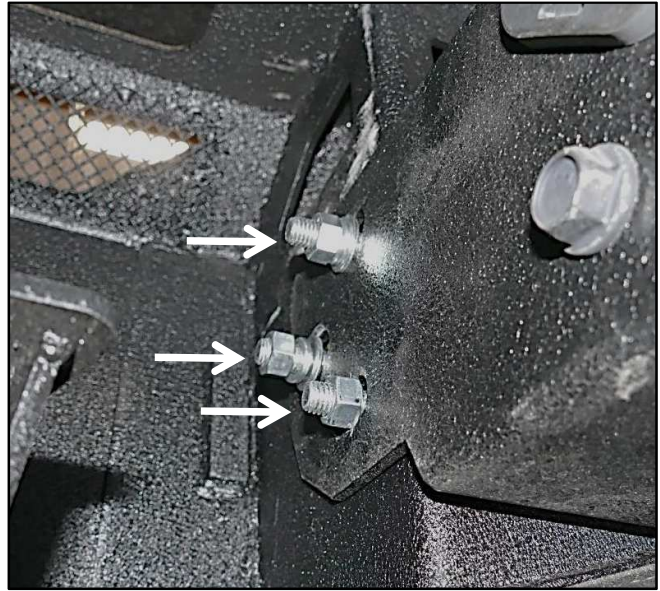
Step 1
With help from an assistant place supplied bumper (A) onto vehicle. Line up the bumper the holes with the holes in the mounting bracket.

INSTALLING NEW BUMPER continued



Step 2

Place supplied M12x1.75x135mm hex head bolt through the holes in the mounting brackets and through the holes in the bumper. Repeat step for remaining bolts.



Step 3

Place a supplied M12 flat washer (E) and supplied M12 split washer (F) at the end of bolt. Start a supplied M12x1.75 hex head nut at the end of bolt. Tighten down bolt using a 18mm socket. Repeat step for remaining nuts. Repeat step for other side of bumper.



Step 4

Reinstall factory grill back onto vehicle by reversing steps 1-3 in the removal process.

Proceed to make electrical connections for the LED lights. If you are not qualified to make the proper connections, we highly recommend that you contact an installation expert to complete the connections.

This completes the installation process.