

BILLET GRILLE INSTRUCTIONS

PN: S112445/ S112448

02-06 Chevy Avalanche Without Body Cladding/03-05 Chevy Silverado 1500 /03-05 Chevy Silverado 1500 SS /03-04 Chevy Silverado 2500 /03-04 Chevy Silverado 3500 /03-05 Chevy Silverado 1500 HD /03-04 Chevy Silverado 2500 HD(2PC)

Hardware

2--Flat head Screws 6--round head screws 8--U-Clips

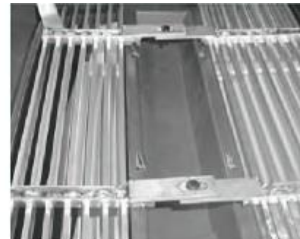
NOTE: Be Careful not to scratch the grills Surface.

You may need to bend the tabs for Silverado or Silverado heavy duty a little bit to reach for the grille shell.

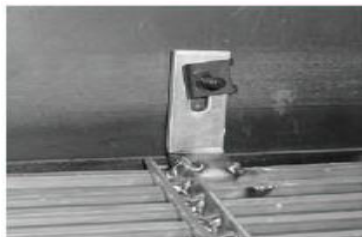
- (1) Remove four plastic fasteners that hold the filler panel to the grille shell.
- (2) Gently pull out ends of grille shell center bar. Pull out four corners of grille shell and remove it.
- (3) Cut out upper and lower plastic cross hatch in grille shell as shown in picture #1.
- (4) Loosely attach upper and lower billet grilles together with screws and U-clip nuts. Center billet grilles in back of grille shell. Tighten screws. Billet grilles should protrude through grille shell cutouts. See picture #2.
- (5) Bend upper tabs as necessary to fit. Mark location of mounting slots and drill 1/4"holes. Attach upper tabs to grille shell with screws and U-clip nuts. See picture #3.
- (6) Bend lower mounting tabs as necessary to fit snugly against grille shell lower mounts. Mark position of mounting holes and drill a holes. Fasten with screws and U-clip nuts. See picture #4.
- (7) Install grille shell assembly to vehicle. Reattach plastic fasteners to filler panel.



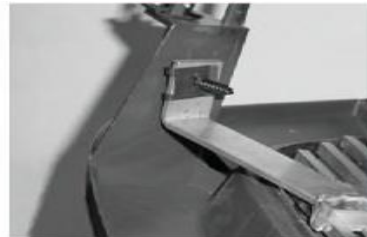
PICTURE 1



PICTURE 2



PICTURE 3



PICTURE 4

The instruction here is for your reference only. You may need to bend the billet grille bars or tabs a little bit to adjust to fit. We strongly recommend the professional installer for best result. We are not responsible for any damage caused by the installation. Thank you for choosing our product!