

# Wire Mesh Grille Instruction

**Tools Required: Drill / 3/16" Drill Bit / Socket Set / Adjustable Wrench**

**NOTE:** Be Careful not to scratch the grills Surface.

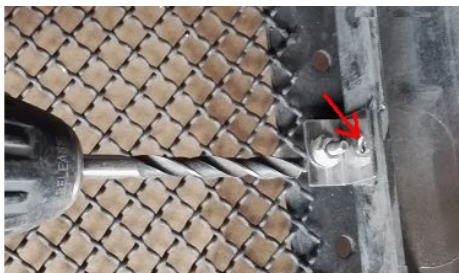
(1) Before installation, please check the mesh grille fitment for your vehicle model.

Open the box, take out the new mesh grille, and lay it over the OE grille shell to test, to be sure it is match with your vehicle.

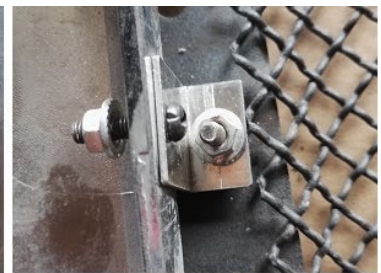
(2) Open the package, take out the stud and "L" tab, place each "L" tab on the welded stud on the grille frame, loosely install the nut, and adjust in follow steps (place the elongated hole against the factory grille shell) see below:



PC.1



PC.2



PC.3

(3) Center the mesh grille over the grille shell, note which mounting tabs will be used. Then turn grille shell and grille over to access the tabs for drilling.

(4) Mark the locations of the grille mounting tabs on the grille shell. Then take away the grille shell and drill ID 3/16" holes on the marks.

(5) Repeat this process for all mounting tabs.

(6) Mount the mesh grille using the supplied hardware adjust as needed. Once centered left to right and top to bottom tighten all hardware.

(7) Reinstall grille shell is complete for installation.

The instruction here is for your reference only. You may need to bend the billet grille bars or tabs a little bit to adjust to fit. We strongly recommend the professional installer for best result. We are not responsible for any damage caused by the installation. Thank you for choosing our product!