



T536175  
S105816  
S505071  
R104791

## Barricade Aluminum Chase Rack

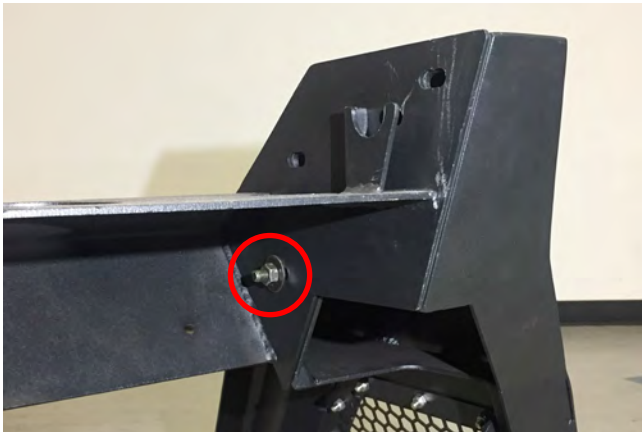
(04-18 F150)  
(07-18 Silverado)  
(07-18 Sierra)  
(02-18 Ram)

### TOOLS REQUIRED:

Basic Hand Tools  
Drill and Drill Bits

### Contents:

- |                         |                                     |
|-------------------------|-------------------------------------|
| (6) - M12 x 60mm Bolts  | (1) - Driver Side Upright           |
| (6) - M10 x 35mm Bolts  | (1) - Passenger Side Upright        |
| (8) - M10 x 25mm Bolts  | (1) - Horizontal Rack Brace         |
| (2) - M8 Flat Washers   | (2) - Dual Nut Plates               |
| (6) - M12 Nuts          | (2) - Vertical Support Braces       |
| (2) - M10 Nuts          | (1) - Middle Light Tray             |
| (12) - M12 Flat Washers |                                     |
| (6) - M12 Lock Washers  | <b>Optional Light Bar Hardware:</b> |
| (16) - M10 Lock Washers | (2) - M8 x 40mm Bolts               |
| (16) - M10 Flat Washers | (2) - M8 x 12mm Plastic Spacers     |
| (2) - M8 Lock Washers   | (2) - M8 x 2.5mm Washers            |
| (1) - Upper Mesh Cover  |                                     |



**STEP 1** // Connect the middle light tray to the driver side upright using (1) M10 x 35mm bolts, and (1) M10 nuts, and (2) M10 flat washers, and (1) M10 lock washers.



**STEP 3** // Install the passenger side upright following steps 1&2.



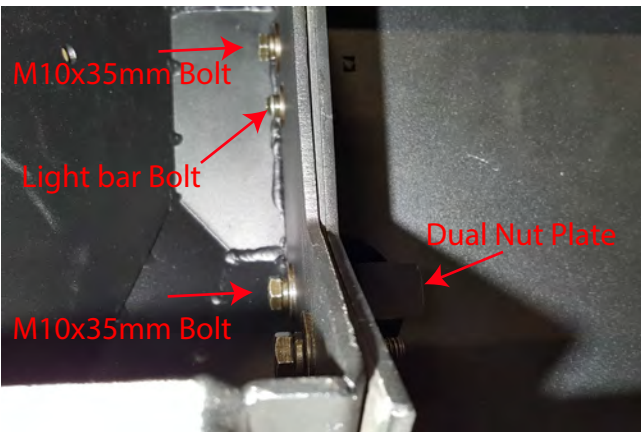
**STEP 2** // Install the horizontal rack support brace using (2) M10 x 25mm bolts, flat washers, and lock washers.



**STEP 4** // Install both driver and passenger side vertical support braces using the (2) 10 x 25mm bolts, flat washers, and lock washers.



**STEP 5 //** If installing the optional light bar, refer to Step 9 before continuing. Place the upper mesh cover between the uprights.



**STEP 6//** Insert the dual nut plate through the hole in the middle light tray. Using the tab on the nut plate align the bolt holes. Install the (1) M10 x 35mm bolts, lock washers, and washers through the outside of the upright and into the dual nut plate. This will tighten the mesh grille cover to the top of the chase rack. Repeat on other side.



**STEP 7//** Place the Chase Rack on top of the bed rails. Be sure to center the rack. Adjust the Chase Rack forward or backwards so that the rack does not make contact with the truck cab.



**STEP 8//** Once the rack is aligned as desired, place the bed rail plates on top of the chase rack. Mark the (3) 1/2 inch hole locations. Drill through your factory bed rail and insert the (6) M12 bolt plates, lock washers, and flat washers securing the chase rack to the bed frame. Repeat on other side.

### Optional LED lighting:



**STEP 9//** Light bar must be installed prior to installing the upper mesh cover. Insert the M8 x 40mm bolts, lock washers, and flat washers through the upright and light tray. Install the provided spacers between the light bar and the tray as seen above. Do to the differing widths of 40" light bars, additional 2.5mm spacer/washers are included.