

# Bug Deflector Install Guide

## (14-18) Sierra

### Contents:

- (1) Bug Deflector
- (2) Machine Screws
- (2) Washers
- (2) Rubber Bumpers
- (1) Prep Pad
- (2) Metal Clips
- (2) Clear Vinyl Squares

### Tools Required:

- Phillips Head Screw Driver



### Step 1//

Begin by thoroughly cleaning the front edge of the hood with soap and water. The Bug Deflector will be secured to the hood using double sided tape. It is critical that this surface is free of any and all dirt, grease, oil etc. It is highly recommended that you use isopropyl alcohol to ensure the cleanest possible mounting surface.



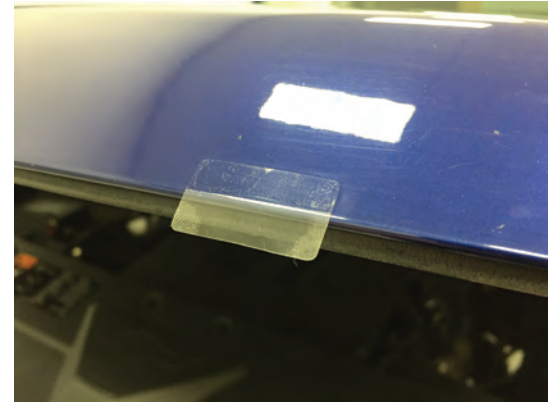
### Step 2//

Install the metal clips onto the Bug Deflector using the supplied washer and machine screw. These clips clamp outer edges of the Bug Deflector to the hood. \*\*Note: The vinyl squares will be used between the paint and the slip to protect the paint from damage.



### Step 3//

Before removing the tape backing, test fit the Bug Deflector on the hood. Center the Bug Deflector on the hood using the factory body line and the notch in the Bug Deflector as a reference points. \*\*Note the location of the metal clips for the next step.



### Step 4//

Before removing the tape backing, place the supplied vinyl squares on the hood surface where the metal clips secure the outer edges of the Bug Deflector. Fold the square around to the backside to protect the paint on the top and bottom of the hood. \*\*Note: The metal clips may need to be "opened" up a little bit for better fitment. They should be a snug fit, but they shouldn't have to be forced onto the hood.



### Step 5//

Remove the tape backing and install the Bug Deflector. Ensure the clips engage the hood prior to pressing down on the double sided tape. Once aligned, apply firm even pressure to the taped surfaces to ensure proper adhesion.



### Step 6//

Finish the installation by installing the supplied rubber bumpers to protect the paint anywhere the Bug Deflector may make contact with the hood.