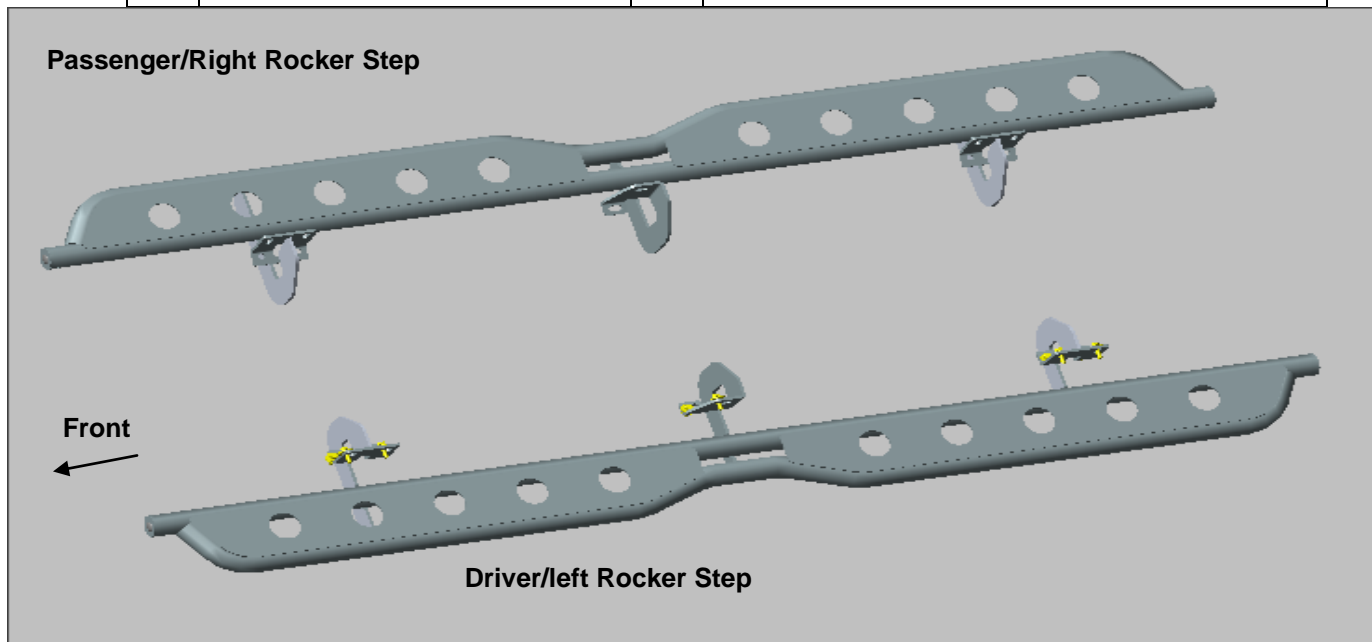


09-18 F150 Super Crew HD Rocker Step

PARTS LIST:

1	Driver/Left Rock Step	10	8mm x 28mm OD x 3mm Large Flat Washers
1	Passenger/Right Rock Step	20	8mm x 24mm OD x 2mm STD Flat Washers
10	8mm Deep Clip Nuts	20	8mm Lock Washers
10	8-1.25mm x 30mm Hex Bolts	10	8mm Hex Nuts
10	8-1.25mm x 25mm Hex Bolts		



PROCEDURE:

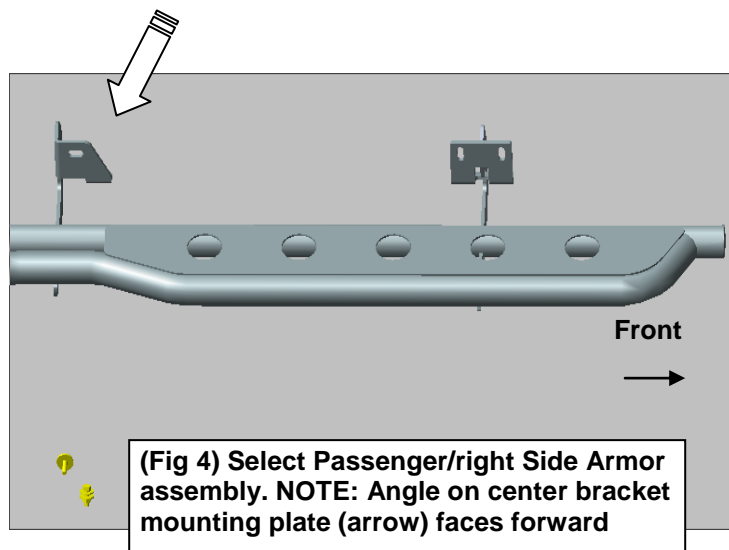
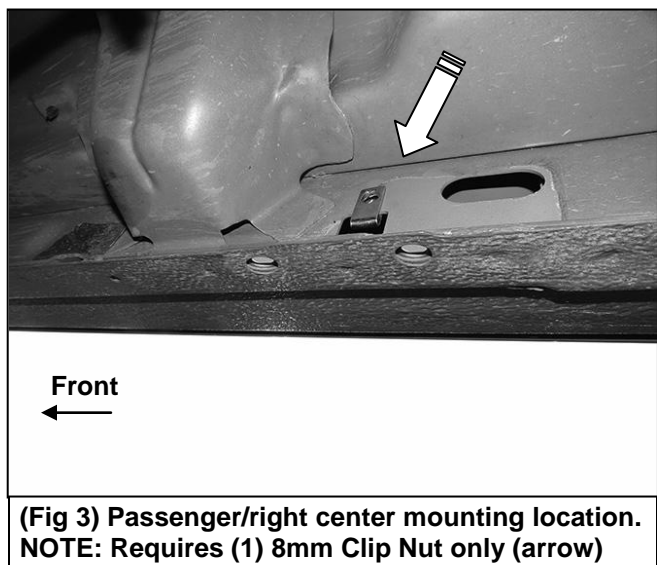
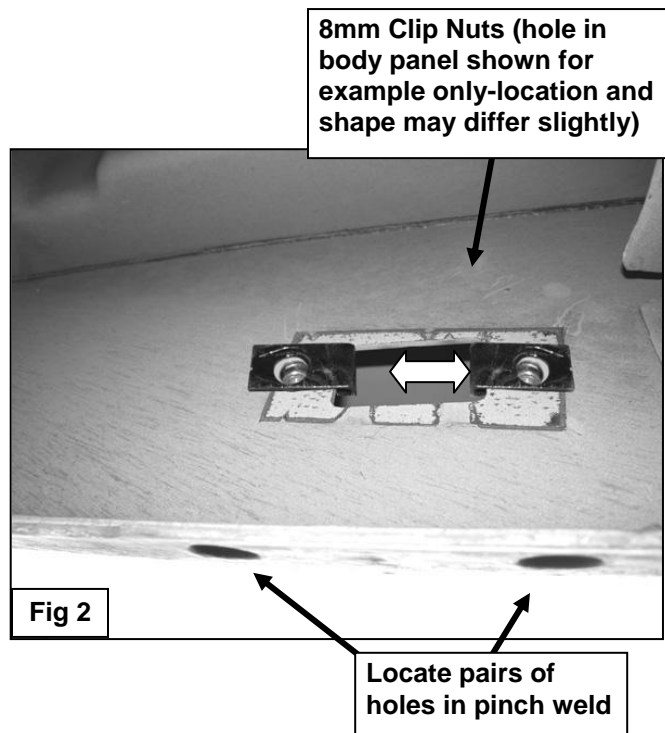
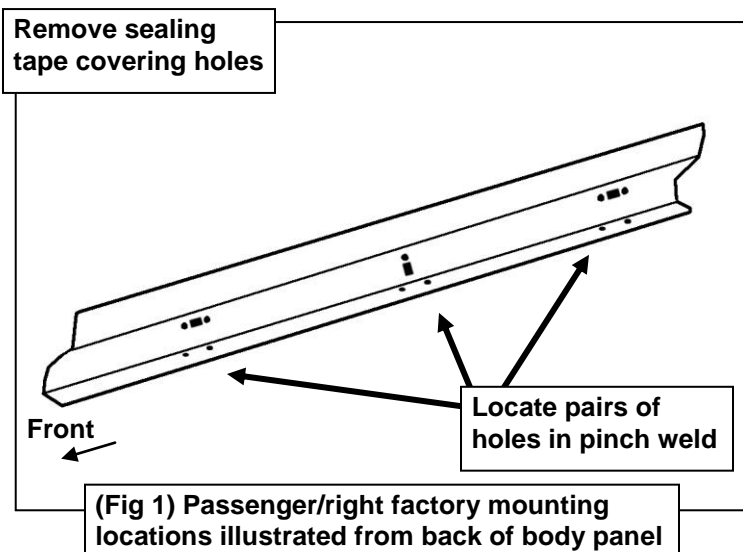
REMOVE CONTENTS FROM BOX. VERIFY ALL PARTS ARE PRESENT. READ INSTRUCTIONS CAREFULLY. ASSISTANCE IS HIGHLY RECOMMENDED.

- Starting on the passenger side of the vehicle, locate the (2) holes in the bottom of the body panel, (pinch weld). Next locate the rectangular opening and (2) small holes in the inner body panel directly above the holes in the pinch weld, **(Figures 1 & 2)**. **NOTE:** The holes in the body panel may be covered with sealing tape or insulation.
- Slide (1) 8mm Clip Nut into the rectangular opening with the nut towards the inside. Line up the threaded nut on the clip with the round hole, **(Figure 2)**. Repeat to install 2nd 8mm Clip Nut in remaining hole location.
- Continue along the cab to the center mounting location. Note that the center location only requires (1) 8mm Clip Nut in the upper position, **(Figure 3)**. Repeat **Steps 1 & 2** to install the (1) 8mm Clip Nut in the center mounting location only.
- Locate the last (2) mounting holes in the pinch weld towards the back of the cab. Repeat **Steps 1 & 2** to install the (2) 8mm Clip Nuts.
- Select the passenger/right Rocker Step. **NOTE:** Left and right Rocker Step assemblies are very similar. Use **Figure 4** to properly identify the passenger/right Rocker Step assembly.
- With assistance, hold the passenger/right Rocker Step up in place against the inner body panel. Attach the Rocker Step to the (5) Clip Nuts with the included (5) 8mm x 30mm Hex Bolts, (5) 8mm Lock Washers and (5) 8mm x 28mm Large Flat Washers, **(Figures 5—8)**. Leave hardware loose.
- Align the bottom holes in the Rocker Step with the holes along the pinch weld. Attach the Rocker Step to the pinch weld using the included (5) 8mm x 25mm Hex Bolts, (10) 8mm STD Flat Washers, (5) 8mm Lock Washers and (5) 8mm Hex Nuts, **(Figures 5—8)**. **NOTE:** Insert the bolts up from the bottom of the pinch weld and through the Bracket.
- Level and adjust the Rocker Step and tighten all hardware.

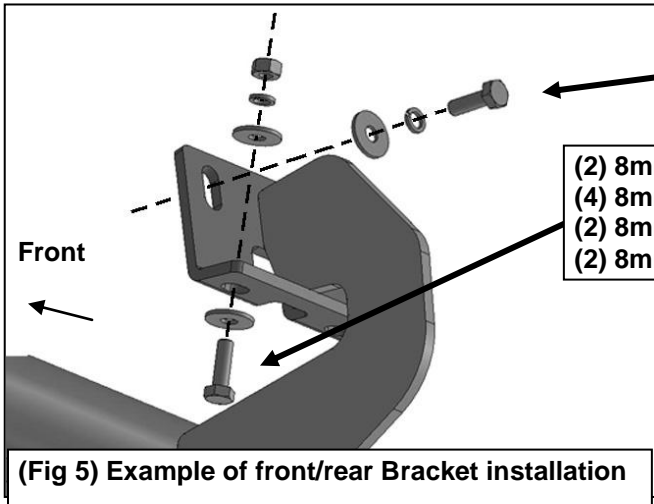
9. Repeat **Steps 1—8** for driver/left Rocker Step installation. **NOTE:** Depending on model and year, the brake cable may be run on the inside or outside of the front bracket.
10. Do periodic inspections to the installation to make sure that all hardware is secure and tight.

To protect your investment, wax this product after installing. Regular waxing is recommended to add a protective layer over the finish. Do not use any type of polish or wax that may contain abrasives that could damage the finish. Use only mild soap to clean the Rock Step.

Passenger Side Installation Pictured



Passenger Side Installation Pictured

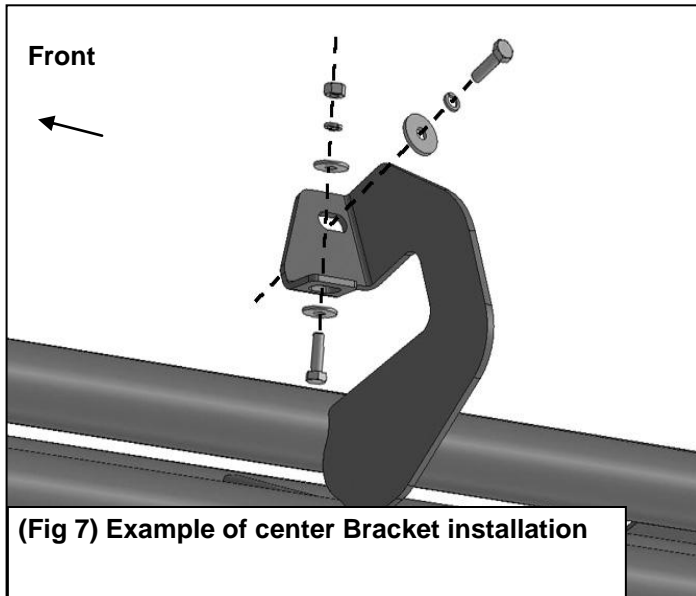


- (2) 8mm x 30mm Hex Bolts
- (2) 8mm Lock Washers
- (2) 8mm x 28mm Large Flat Washers

- (2) 8mm x 25mm Hex Bolts
- (4) 8mm x 24mm STD Flat Washers
- (2) 8mm Lock Washers
- (2) 8mm Hex Nuts

- (2) 8mm x 30mm Hex Bolts
- (2) 8mm Lock Washers
- (2) 8mm x 28mm Large Flat Washers

(Fig 5) Example of front/rear Bracket installation



(Fig 7) Example of center Bracket installation

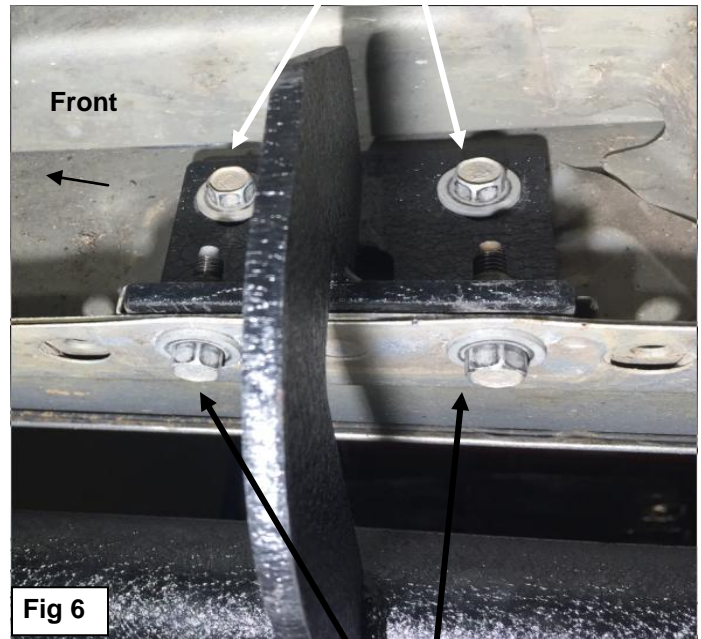
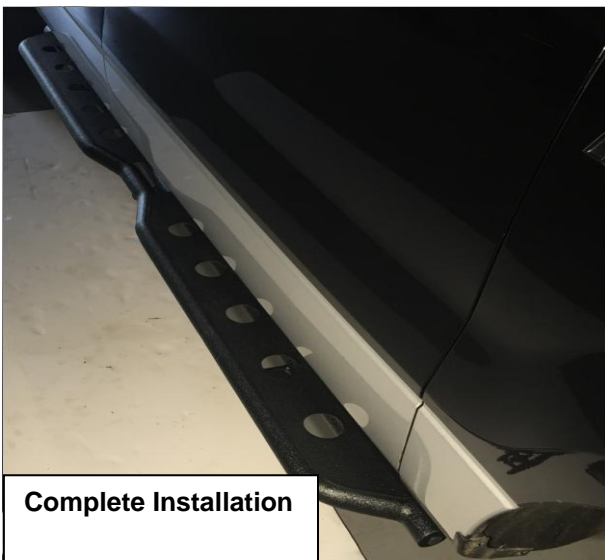
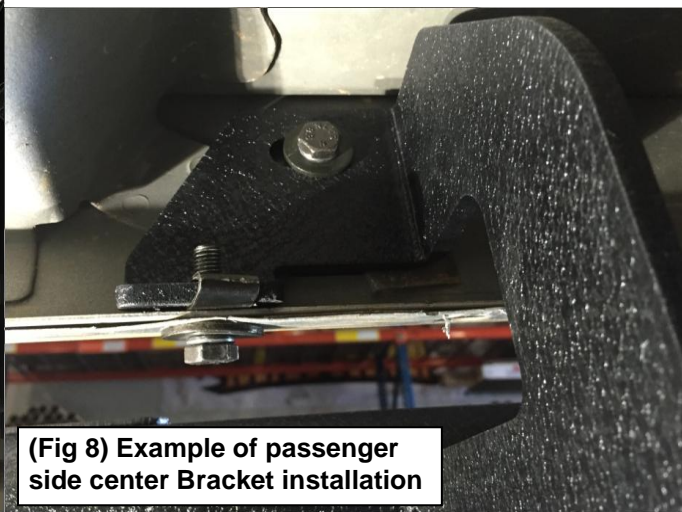


Fig 6

- (2) 8mm x 25mm Hex Bolts
- (4) 8mm x 24mm STD Flat Washers
- (2) 8mm Lock Washers
- (2) 8mm Hex Nuts



Complete Installation



(Fig 8) Example of passenger side center Bracket installation