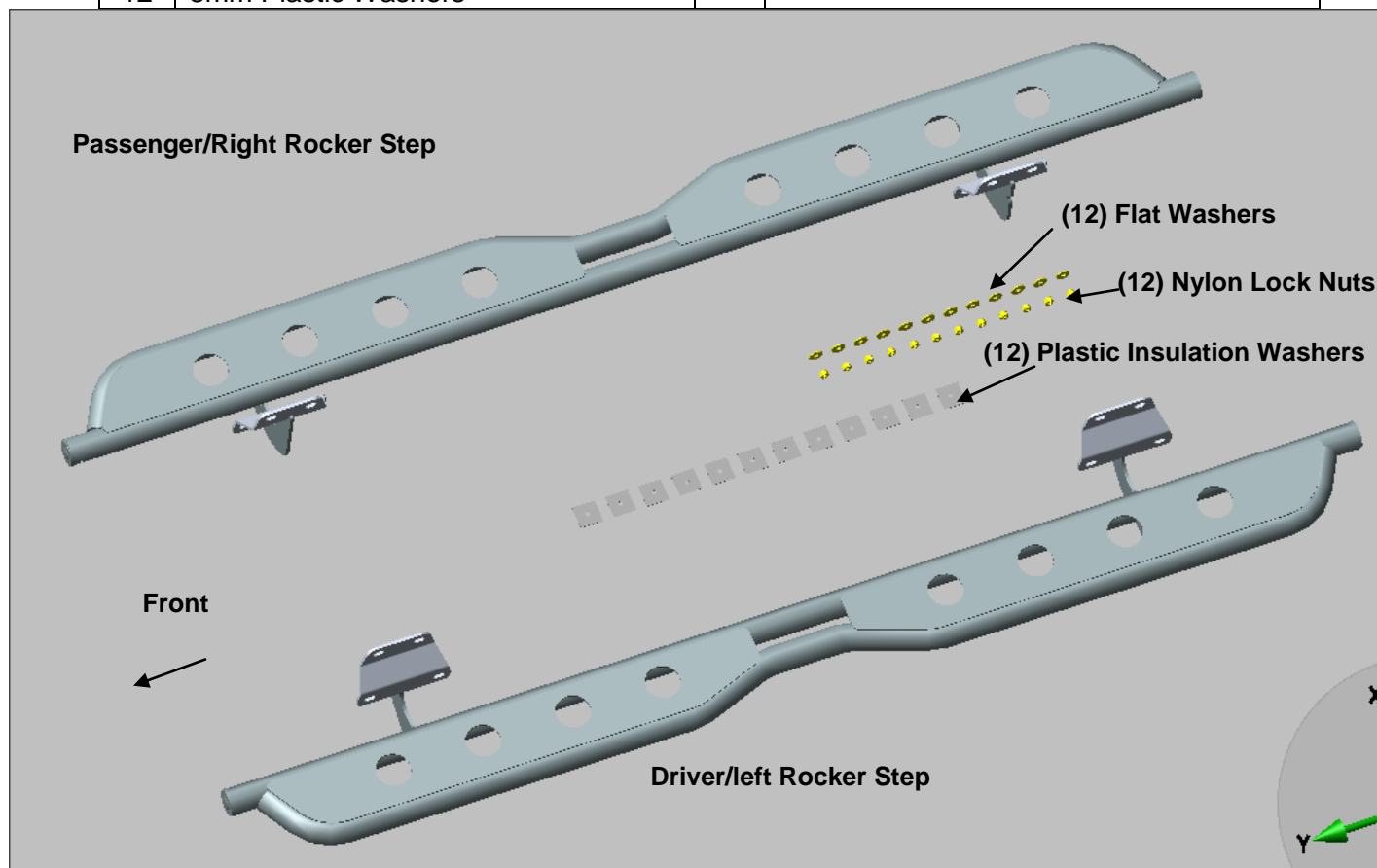


15-18 F150 Super Cab HD Rocker Step

PARTS LIST:

1	Driver/Left Rocker Step	12	8mm x 24mm OD x 2mm Flat Washers
1	Passenger/Right Rocker Step	12	8mm Nylon Lock Nuts
12	8mm Plastic Washers		



PROCEDURE:

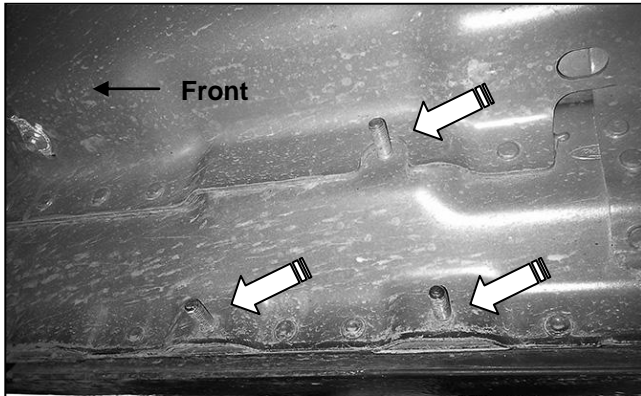
REMOVE CONTENTS FROM BOX. VERIFY ALL PARTS ARE PRESENT. READ INSTRUCTIONS CAREFULLY. ASSISTANCE IS HIGHLY RECOMMENDED.

1. Start the installation under the passenger side of the vehicle. Locate the front factory running board mounting location along the inner side of the body, **(Figure 1)**.
2. Slide (1) Plastic Washer over each of the (3) factory mounting studs in the body panel, **(Figures 2, 3 & 6)**. **IMPORTANT:** The Plastic Washers are designed to prevent corrosion between the aluminum body panel and the steel mounting brackets. **Do not install the Brackets without the Plastic Washers.**
3. Select the passenger/right Rocker Step assembly, **(Figures 4 & 5)**. **NOTE:** Passenger and driver Rocker Step are similar. Rear mounting bracket features a notch on the back of the bracket to help identify, **(Figure 4)**. Also, the front bracket is slightly closer to the front end of the tube than the rear bracket, **(Figure 5)**.
4. With assistance, hold the Rocker Step assembly up to the vehicle and over the mounting studs and Plastic Washers. Attach the Rocker Step to the studs with (6) 8mm Flat Washers and (6) 8mm Nylon Lock Nuts, **(Figures 6—8)**.
5. Level and adjust the Rocker Step assembly as desired and tighten all hardware.

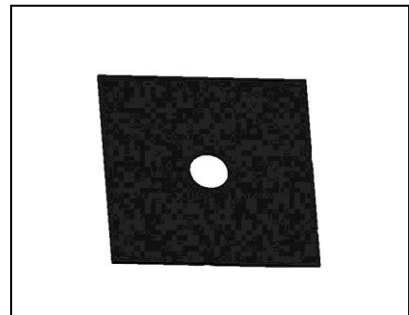
6. Repeat **Steps 1—5** to install the driver/left Rocker Step assembly.
7. Do periodic inspections to the installation to make sure that all hardware is secure and tight.

To protect your investment, wax this product after installing. Regular waxing is recommended to add a protective layer over the finish. Do not use any type of polish or wax that may contain abrasives that could damage the finish. Use only mild soap to clean the Rocker Step.

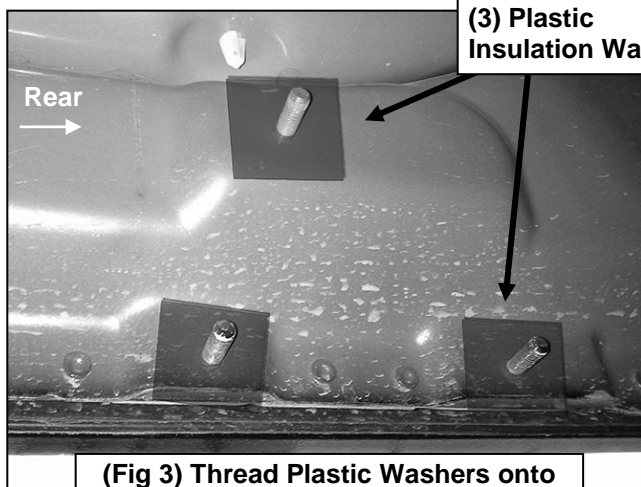
Passenger/right Side Installation Pictured



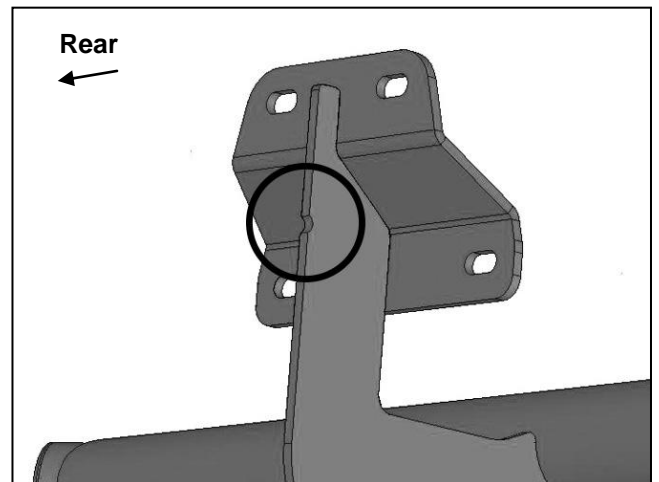
(Fig 1) Passenger side front mounting location



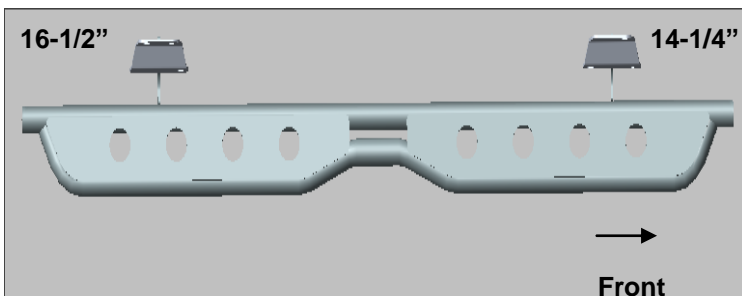
(Fig 2) Plastic Insulation Washer



(Fig 3) Thread Plastic Washers onto all mounting studs. Passenger side rear mounting location pictured



(Fig 4) Locate notch (circled) to identify rear Bracket

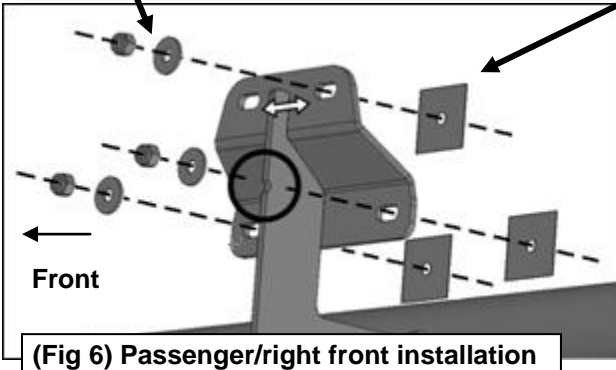


(Fig 5) Select passenger/right Rocker Step assembly. Note front bracket is slightly closer to end of tube

(3) 8mm Flat Washers
(3) 8mm Nylon Lock Nuts

Passenger/right Side Installation Pictured

(3) 8mm Plastic Washers



(Fig 6) Passenger/right front installation

(3) 8mm Plastic Washers
(3) 8mm Flat Washers
(3) 8mm Nylon Lock Nuts

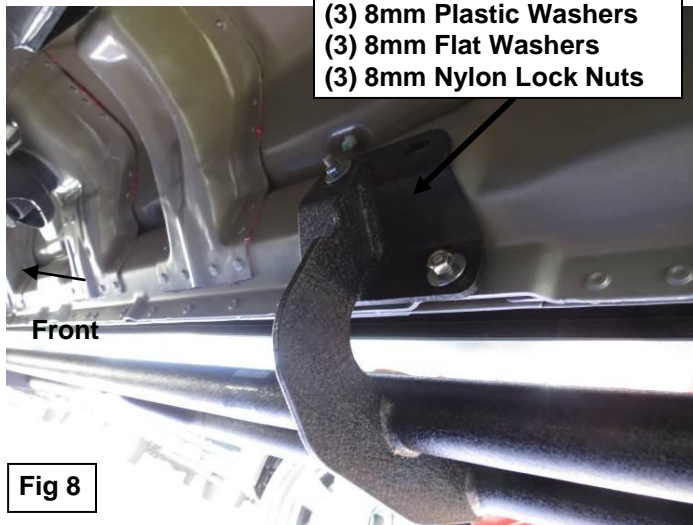
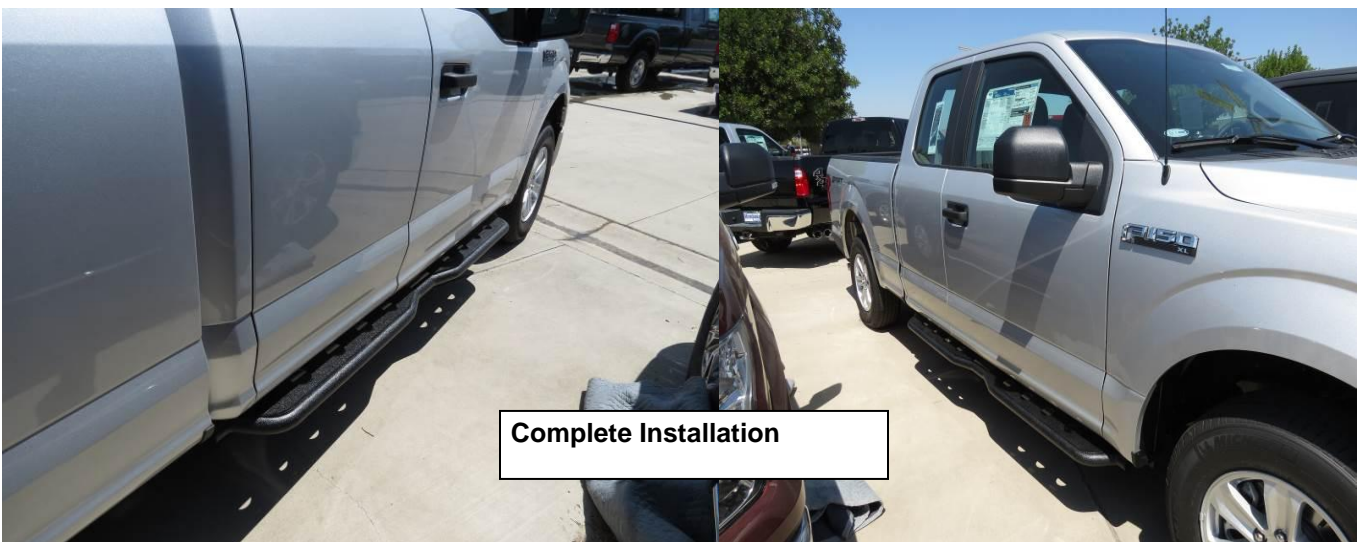


Fig 8



Fig 7



Complete Installation