

# REDROCK<sup>4X4</sup>

## RedRock 4x4 Tubular HD Rear Bumper w/LED Fog Lights (15-17 F150)

### Contents

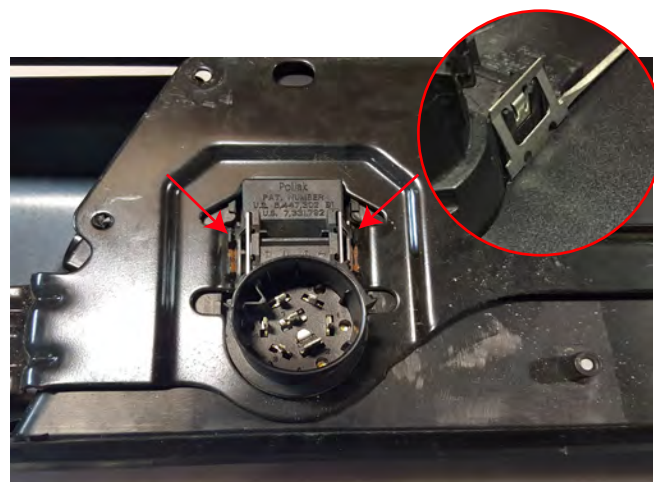
- (1) - Bumper
- (2) - Mounting Brackets
- (2) - Double Bolt Plates
- (2) - Mesh Grilles
- (4) - M10 Lock Nuts
- (4) - M10 Flat Washers
- (4) - M6 Lock Nuts
- (4) - M6 Flat Washers
- \*\* (2) - LED Lights
- \*\* (1) - Led Light Wiring Harness

### TOOLS REQUIRED

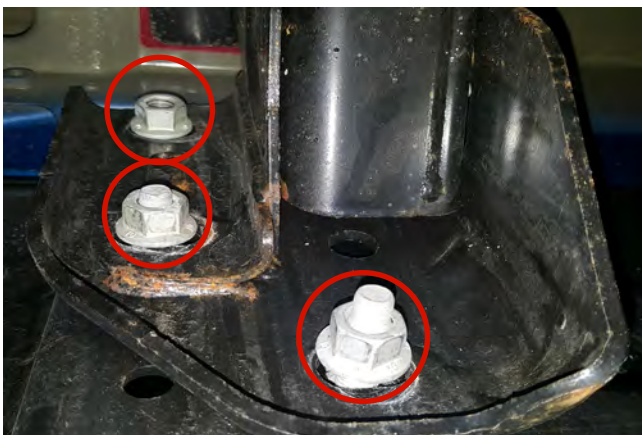
Basic Hand Tools



**STEP 1** // Unplug the factory license plate light harness and the trailer plug connector and pull away from the bumper. If equipped unplug and remove the factory backup sensor.



**STEP 3** // Using a flat head screw driver, push in the metal tabs around the trailer plug connector and remove it from the factory bumper. Reinstall the trailer plug into the new bumper. If it does not clip in, use a small screw driver to expand the clips.



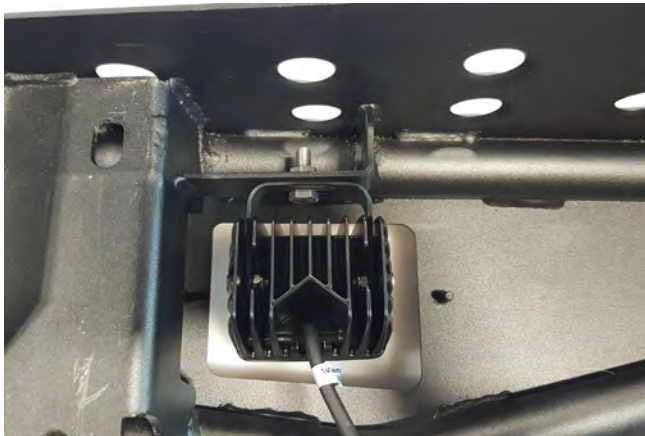
**STEP 2** // Remove the (6) 21mm nuts that hold the bumper to the frame rail. Remove bumper from vehicle.  
\*\*Note Factory 21mm nuts will be reused.



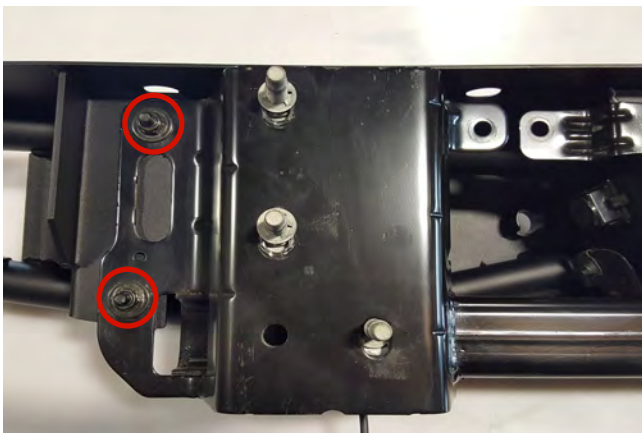
**STEP 4** // Using your factory ignition key, turn the spare tire lock clockwise and remove the spare tire lock from the factory bumper. Then install it in the new RedRock 4x4 bumper.



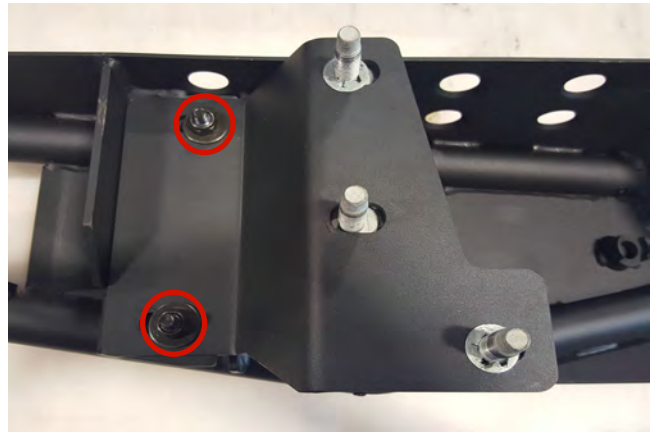
**STEP 5** // Using a flat head screw driver, push in the plastic tabs around the license plate lights, and remove it from the factory bumper. Install these in the new RedRock 4x4 bumper by pushing them in place till they snap in.



**STEP 6** // Optional LED lighting, install the LED lights using the hardware provided in the light packaging. If choosing not to use the LED lighting. The bumper will include bolt on mesh covers. Secure the cover to the bumper using the provide (2) M6 nuts and flat washer.



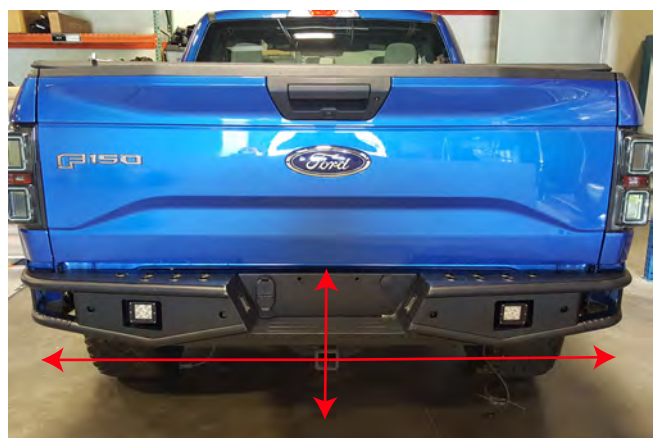
**STEP 7** // If your vehicle is equipped with a factory trailer hitch receiver, remove the (10) factory M10 bolts from the factory bumper. Install the hitch receiver to the RedRock 4x4 bumper using the (2) double bolt plate, (4) M10 lock nuts, and (4) M10 flat washers.



**STEP 8** // If your vehicle is not equipped with a trailer hitch receiver, install the two mounting brackets to the bumper using the (2) double bolt plate, (4) M10 lock nuts, and (4) M10 flat washers.



**STEP 9** // If equipped re-install the factory reverse sensors w/ the rubber grommet flush to the outer face of the bumper. \*\*Note: The factory trim bezel does not get re-used. Using the supplied 4mm screws to apply slight pressure to either side of the sensor. Over tightening of the screws can cause sensor damage. For vehicles w/o sensors install the supplied rubber plugs.



**STEP 10** // Attach the new RedRock 4x4 bumper to the vehicle using the factory (6) 21mm nuts. Be sure to center the bumper, and adjust height of bumper to desired location.





**STEP 11** // Plug the factory license plate lights harness and the trailer plug connector back in. Plug in all factory electrical connections included the license plate lights, trailer plug, and if equipped the reverse sensors.



**STEP 14** // Optional LED light wiring, route the on/off switch to the interior of the vehicle using a suitable body grommet. Mount the switch in the desired location. Zip tie any extra loose wiring away from any damage that could occur.



**STEP 12** // Optional LED light wiring, connect the (2) LED rock lights into the supplied harness. Be sure to zip tie the access wiring away from any damage that could occur.



**STEP 13** // Optional LED light wiring, install the Red 12+ volt wire to the positive battery terminal. Connect the black ground wire to the negative battery terminal. Mount the fuse in a safe location away from any damage that could occur. Tuck away any extra wiring.