

REDROCK^{4X4}

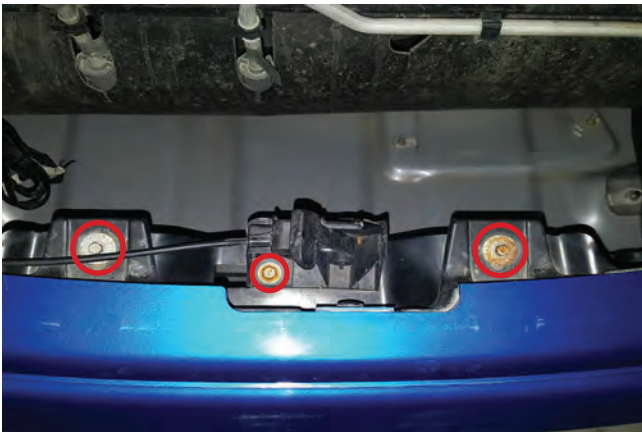
RedRock Tubular HD Front Bumper (09-14 F150) w/ Optional LED Light Bar

Contents:

- | | |
|--------------------------------------|----------------------------------------|
| (1) - Bumper | (8) - M8 Flat Washers |
| (2) - License Plate Mount & Hardware | (4) - M8 Lock washers |
| (1) - Mesh Grille | (4) - Plastic Holder Washers |
| (2) - Mesh Grille / Light Brackets | (10) - Zip Ties |
| (4) - M8 x 1.25 x 20mm Bolts | ** Optional (1) - 20" LED Light Bar |
| (4) - M8 Nuts | ** Optional (1) - Light Wiring Harness |

TOOLS REQUIRED:

Basic Hand Tools
21mm Socket



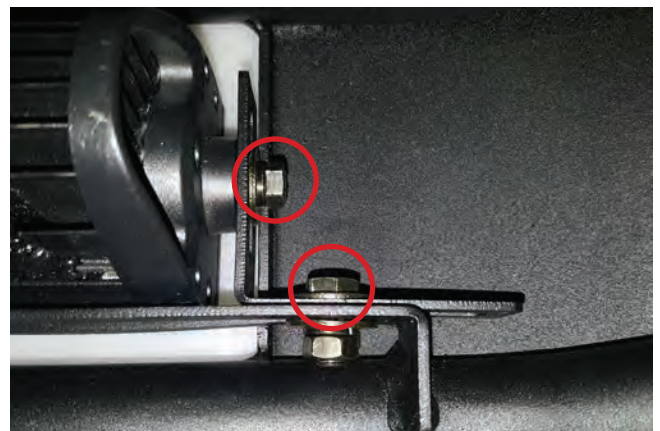
STEP 1 // Remove the (2) 8mm screws, and (1) 10mm bolt that hold the hood latch plate to the factory bumper lip.



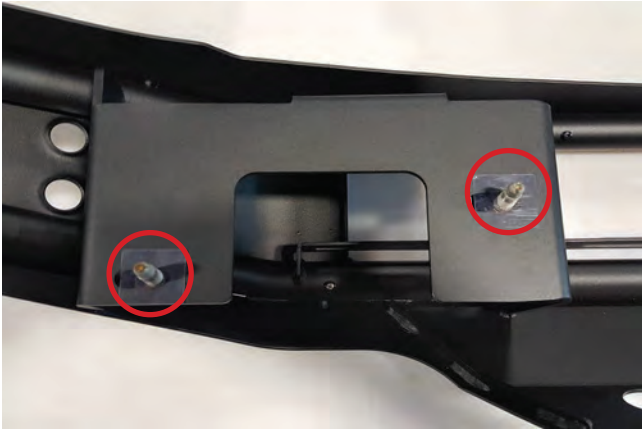
STEP 3 // Attach the front license plate bracket to the new RedRock 4x4 bumper if a front license plate is required using the (2) M6 screws, lock washers, and nuts.



STEP 2 // Next, loosen the upper (4) 21mm nuts holding the front bumper to the support beam of the vehicle. **Note: Factory hardware will be reused.



STEP 4 // If purchased with the LED lighting option, install the LED light using the hardware provided in the light packaging. If choosing not to use the LED lighting. The bumper will include a bolt on mesh cover. Secure the cover to the bumper using (4) M8 x 20mm bolts, lock washers, and nuts.



STEP 5 // Using the supplied (4) plastic washers attach the factory bolts to the RedRock 4x4 bumper.



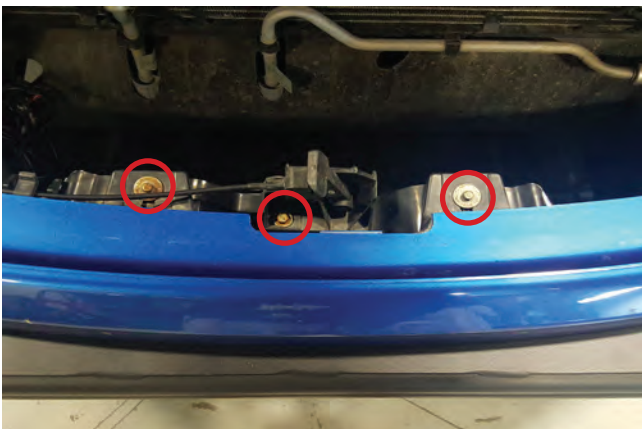
STEP 8 // Optional LED light wiring, connect the (1) LED light bar into the supplied harness. Be sure to zip tie the access wiring away from any damage that could occur.



STEP 6 // Slide bumper into place, and secure using the factory hardware.



STEP 9 // Optional LED light wiring, Install the Red 12+ volt wire to the positive battery terminal. Connect the black ground wire to the negative battery terminal. Mount the fuse in a safe location away from any damage that could occur. Tuck away any extra wiring.



STEP 7 // Re-attach and secure the (2) 8mm screws, and (1) 10mm bolt that hold the hood latch plate to the factory bumper lip.



STEP 10 // Optional LED light wiring, Route the on/off switch to the interior of the vehicle using a suitable body grommet. Mount the switch in the desired location. Zip tie any extra loose wiring away from heat and/or moving engine components.