

# REDROCK<sup>4X4</sup>

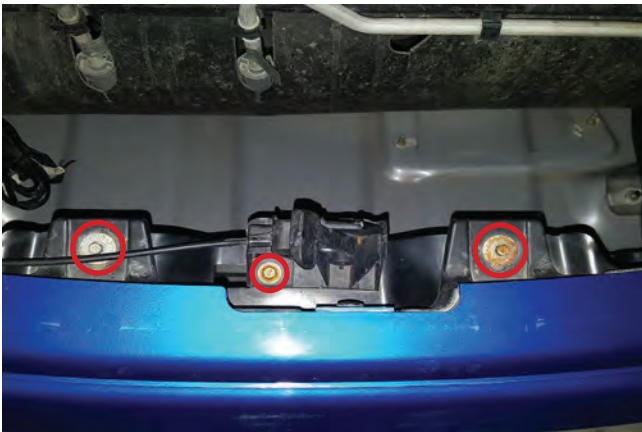
## RedRock Tubular HD Front Bumper (09-14 F150) w/ Optional LED Light Bar

### Contents:

- |                                      |  |
|--------------------------------------|--|
| (1) - Bumper                         | (8) - M8 Flat Washers                  |
| (2) - License Plate Mount & Hardware | (4) - M8 Lock washers                  |
| (1) - Mesh Grille                    | (4) - Plastic Holder Washers           |
| (2) - Mesh Grille / Light Brackets   | (10) - Zip Ties                        |
| (4) - M8 x 1.25 x 20mm Bolts         | ** Optional (1) - 20" LED Light Bar    |
| (4) - M8 Nuts                        | ** Optional (1) - Light Wiring Harness |

### TOOLS REQUIRED:

Basic Hand Tools  
21mm Socket



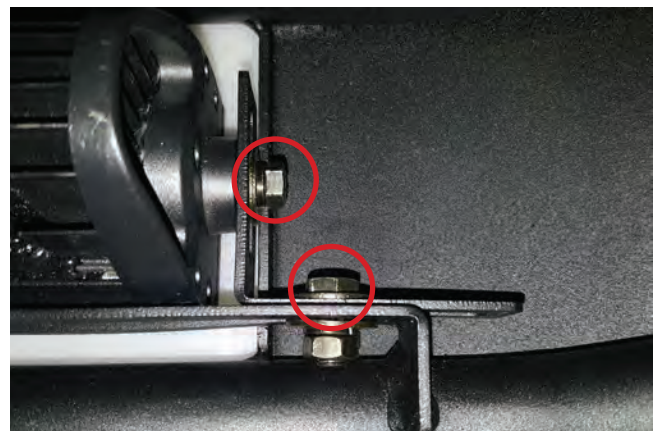
**STEP 1** // Remove the (2) 8mm screws, and (1) 10mm bolt that hold the hood latch plate to the factory bumper lip.



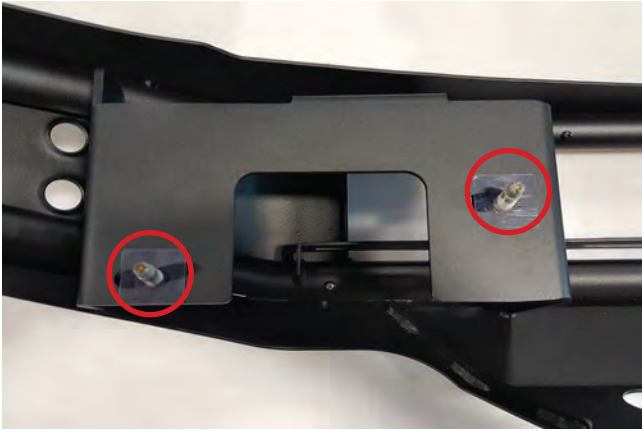
**STEP 3** // Attach the front license plate bracket to the new RedRock 4x4 bumper if a front license plate is required using the (2) M6 screws, lock washers, and nuts.



**STEP 2** // Next, loosen the upper (4) 21mm nuts holding the front bumper to the support beam of the vehicle. \*\*Note: Factory hardware will be reused.



**STEP 4** // If purchased with the LED lighting option, install the LED light using the hardware provided in the light packaging. If choosing not to use the LED lighting. The bumper will include a bolt on mesh cover. Secure the cover to the bumper using (4) M8 x 20mm bolts, lock washers, and nuts.



**STEP 5** // Using the supplied (4) plastic washers attach the factory bolts to the RedRock 4x4 bumper.



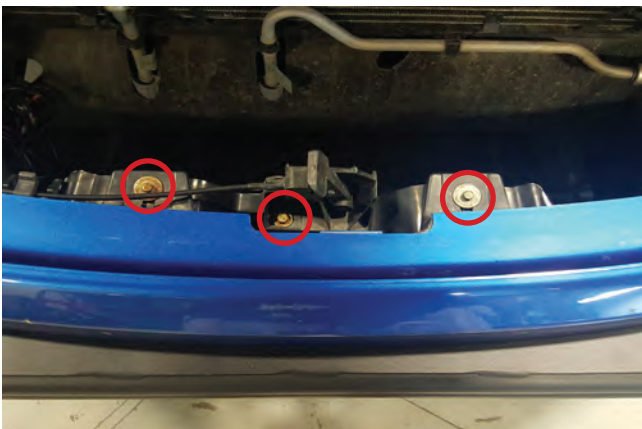
**STEP 8** // Optional LED light wiring, connect the (1) LED light bar into the supplied harness. Be sure to zip tie the access wiring away from any damage that could occur.



**STEP 6** // Slide bumper into place, and secure using the factory hardware.



**STEP 9** // Optional LED light wiring, Install the Red 12+ volt wire to the positive battery terminal. Connect the black ground wire to the negative battery terminal. Mount the fuse in a safe location away from any damage that could occur. Tuck away any extra wiring.



**STEP 7** // Re-attach and secure the (2) 8mm screws, and (1) 10mm bolt that hold the hood latch plate to the factory bumper lip.



**STEP 10** // Optional LED light wiring, Route the on/off switch to the interior of the vehicle using a suitable body grommet. Mount the switch in the desired location. Zip tie any extra loose wiring away from heat and/or moving engine components.