

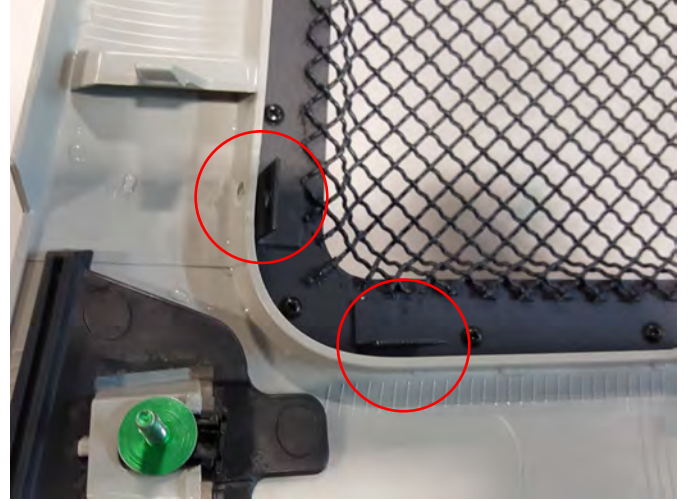
2009 - 2014 Ford F150

Mesh Grille Insert with Frame, Rivets, & LED Lighting - Black Stainless



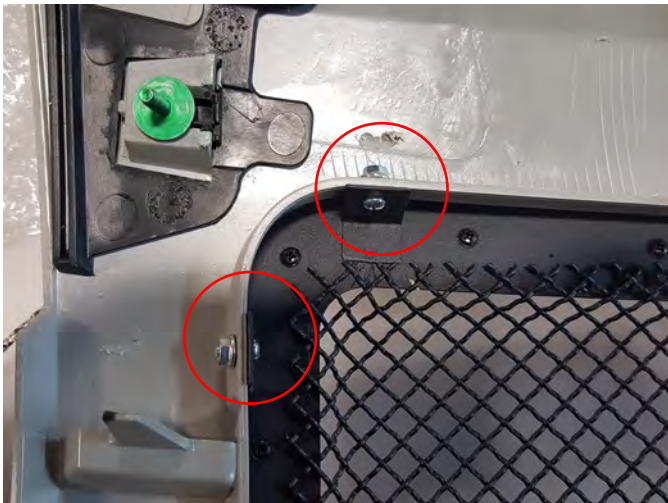
Step 1\\

Using a 10mm socket, remove the (6) nuts across the top, and the (6) grille bracket bolts holding the grille to the hood. Remove grille.



Step 2\\

Drill (12) 5/16 holes around the grille frame.



Step 3\\

Install the new grille using the (12) supplied screws and nuts securing the grille to the grille frame.



Step 4\\

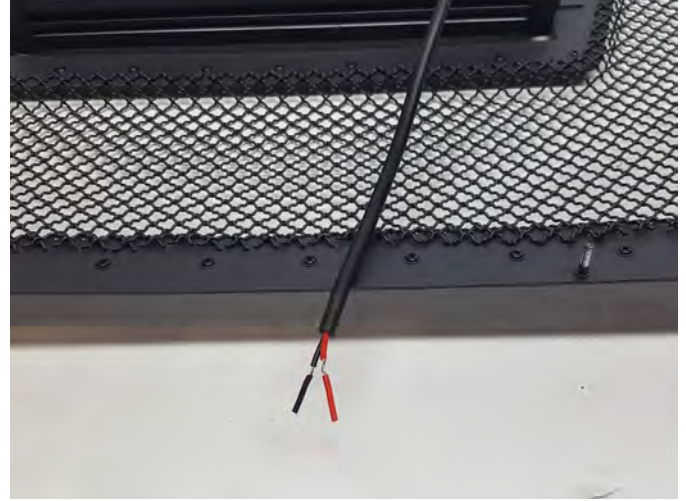
Reinstall the factory (6) nuts across the hood securing the grille frame.

2009 - 2014 Ford F150

Mesh Grille Insert with Frame, Rivets, & LED Lighting - Black Stainless



Step 5
Reinstall the (6) factory 10mm bolts securing the grille frame bracket to the hood.



Step 6
Optional LED Wiring Diagram:
Red- Switch ignition 12Volt
Black- Chassis Ground



Step 7
Slowly close the hood. If the grille make contact with the bumper, adjustment will be required. Loosen the grille bolts and adjust as needed.