

Tools Needed:

Panel Removal Tool
Flat Head Screw Driver
7mm, 8mm, & 10mm Sockets
Ratchet Wrench

Contents:

(1) Driver Side Headlight
(1) Passenger Side Headlight



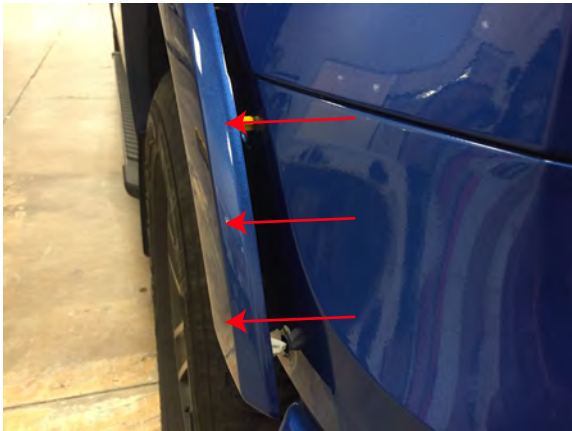
Step 1:

Using a panel removal tool, remove the push clip holding the headlight cover in place.



Step 2:

Using a 7mm socket and ratchet, remove the (2) inner fender flare screws.



Step 3:

Using a panel removal tool, carefully pry the fender flare away from the fender enough to remove the headlight bezel.



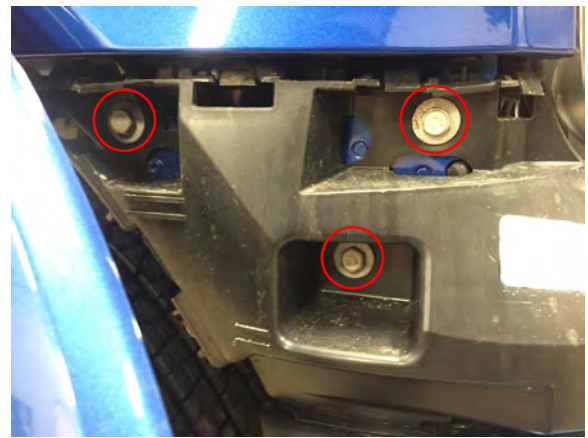
Step 4:

Carefully pry the headlight bezel away from the headlight. This headlight bezel is held in with clips.



Step 5:

Remove the (2) 8mm and (3) 10mm bolts on the headlight nose panel.



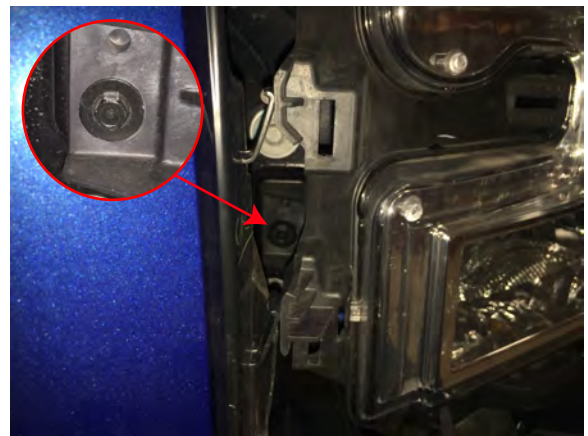
Step 6:

Remove the (3) 10mm bolts on the side of the headlight nose panel.



Step 7:

Remove the (2) 10mm headlight bolts located on the top of the headlight.



Step 8:

Remove the last 10mm headlight bolt located inbetween the headlight and the grille.



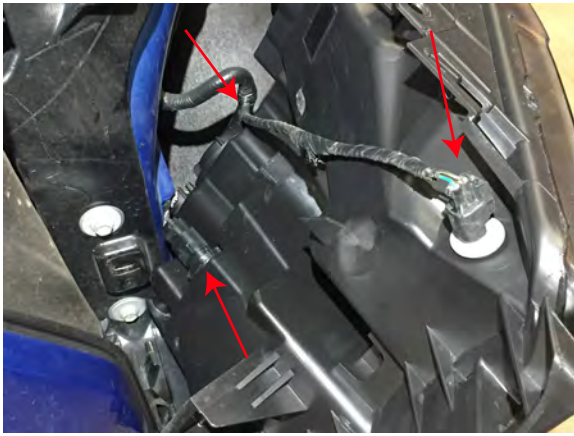
Step 9:

Using a flat head screw driver, carefully pry up on the headlight tab and pull headlight forward.



Step 10:

Carefully pry the headlight away from the locating tab.



Step 11:

Remove the (3) headlight bulb connectors, then carefully remove the headlight.



Step 12:

Connect the (3) headlight bulb connectors into the back of the new headlight, and carefully insert the new headlight into place using the locating tab.



Step 13:

Reinstall the (3) 10mm bolts securing the headlight in place. (2) on the top of the headlight, and (1) in the middle of the headlight between the headlight and the grille.



Step 14:

Reinstall the (2) 8mm bolts, and the (3) 10mm bolts on the front part of the headlight nose panel. Then reinstall the (3) 10mm bolts on the side of the nose panel.



Step 15:

Reinstall the headlight bezel, and fender flares by reversing steps 4 then 3. Installation is complete.



Step 16:

Headlight Adjustment: Using a phillips head screw driver, turn the adjuster clockwise to adjust the light up. Turn the adjuster counter-clockwise to adjust the light down.