

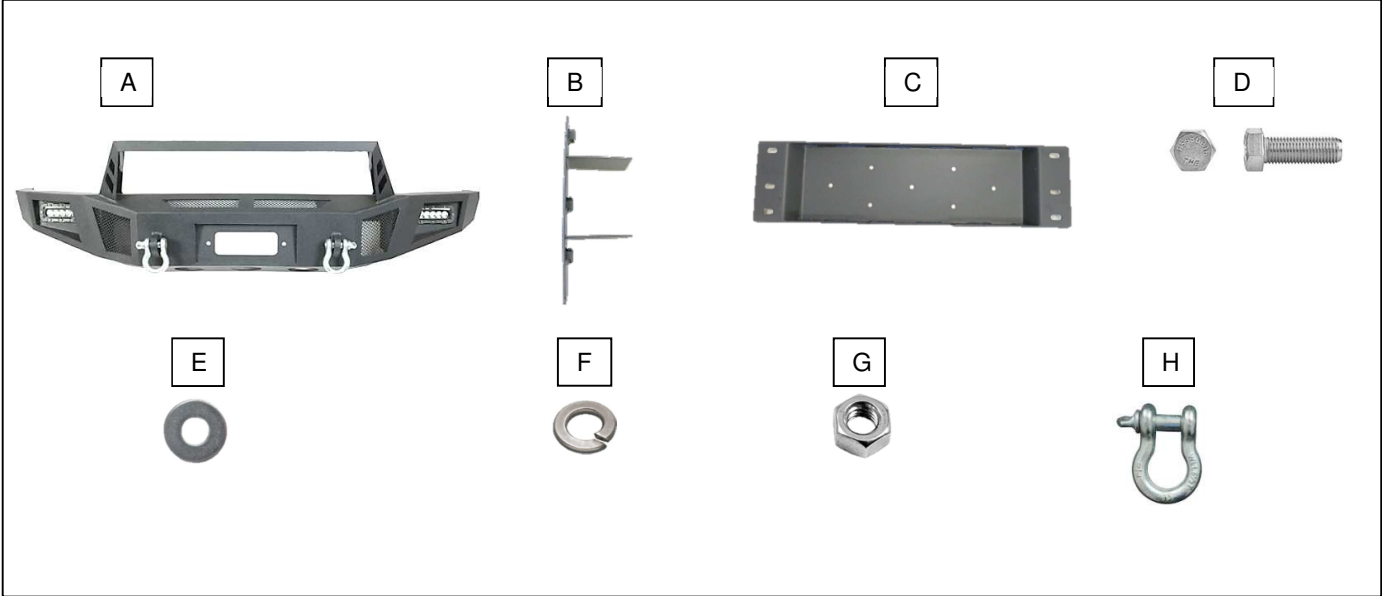
HD Front Bumper w/ Winch Mount & LED Lighting


Installation Instructions

PART NUMBER T542487

FITS FORD F-150 15-17

KEY TO COMPONENTS	TOOLS NEEDED
A. 1 ea. Bumper	Socket drive
B. 2 ea. Winch Plate mounting bracket	18mm socket
C. 1 ea. Winch plate	21mm socket
D. 6 ea. M12x1.75x35mm hex head bolt	Plastic rivet removal tool or similar tool.
E. 10 ea. M12 Flat washer	
F. 10 ea. M12 Split washer	
G. 4 ea. M12x1.75x35mm	
H. 2 ea. D-Rings	



 Please take a few minutes to read and thoroughly familiarize yourself with the installation procedures outlined in this manual. Following the steps as outlined will save you time and help reduce mistakes. Once the instructions are reviewed, if you feel that you are not capable of safely installing the parts seek the help of a qualified installation expert to help you complete the job. The manufacture is in no way responsible for any personal injury or vehicle damage that may occur during the installation.

ELECTRICAL INSTALLATION



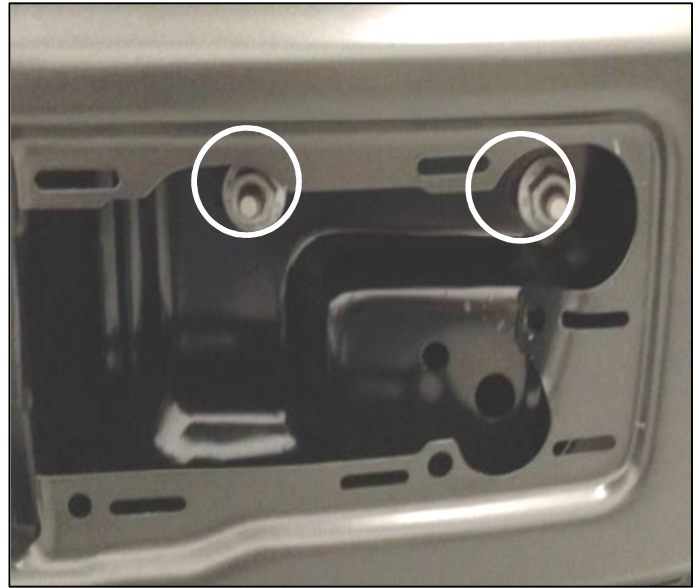
This bumper comes complete with LED lights which need to be connected to a power source. Failure to properly make these connections could result in damage to the LED lights and/or your vehicle and may result in personal injury. If you are not qualified to make the proper connections, we highly recommend that you contact an installation expert to complete the connections.

California Proposition 65 Warning!
 This product may contain lead a chemical known to the State of California to cause cancer and birth defects or other reproductive harm. For more information go to www.P65Warnings.ca.gov.

FACTORY BUMPER REMOVAL



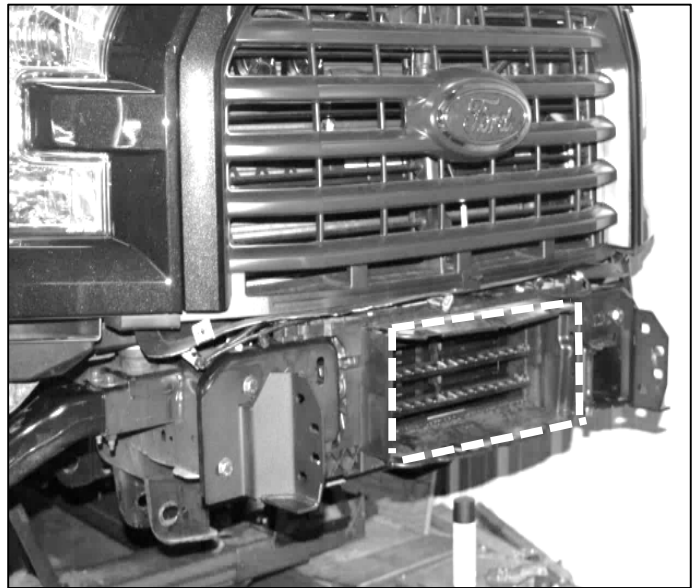
Step 1.
Using a plastic clip removal tool or similar tool pry off factory front plastic bumper cap from bumper. Repeat same step for other side bumper cap. Set bumper caps aside in a protected area.



Step 2.
Using 21mm deep socket locate and remove two factory bolts holding bumper onto vehicle. Repeat same steps for other side. Discard factory hardware.

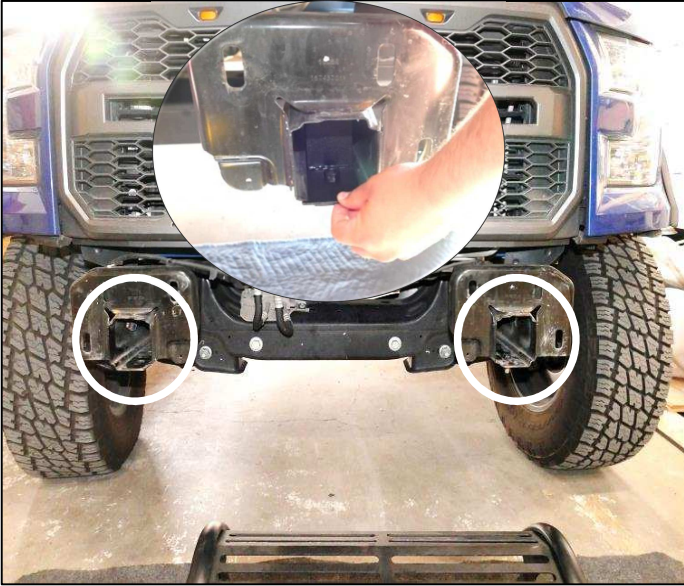


Step 3.
Disconnect fog lights from factory bumper. Carefully pull factory bumper from vehicle. Make sure nothing is still connected. Set factory bumper aside in a protected area.



Step 4.
If your vehicle model includes a louver system for the intercooler located between the frame mounts, the shroud must be removed. Special care must be taken not to damage louvers when cutting around the base of the rectangular shroud, a cut off wheel is recommended.

INSTALLING WINCH PLATE BRACKETS



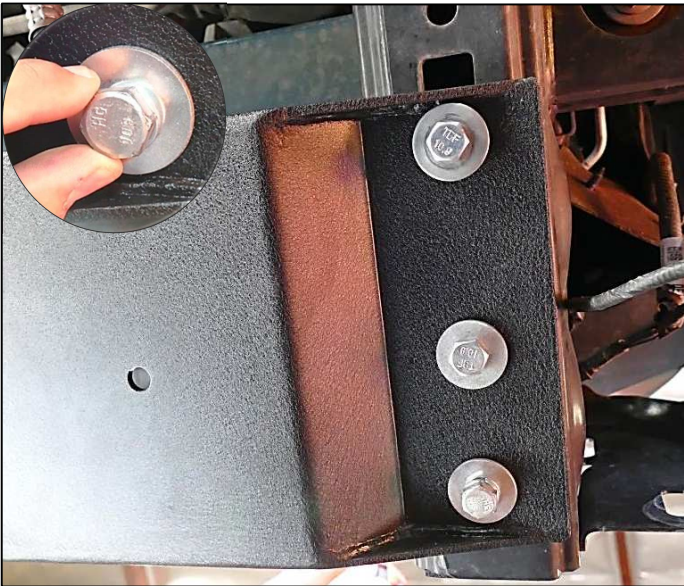
Step 1.
Locate where the supplied winch plate mounting brackets (B) will go. Install supplied winch plate mounting bracket onto vehicle as shown. Line up the holes in the brackets with the holes in the vehicle frame. Repeat for other side.

INSTALLING WINCH PLATE



Step 1.
Install supplied winch (C) onto vehicle. Line up the holes in the win

INSTALLING FRONT BUMPER



Step 2.
Working underneath the vehicle install supplied M12x1.75x35mm hex head bolt (D) with supplied M12 split washer (F) and supplied M12 flat washer (E) through the winch plate holes and through the vehicle chassis onto winch plate mounting bracket. Repeat step for remaining bolts. Tighten down all hardware using a 18mm socket. Repeat step for other side.

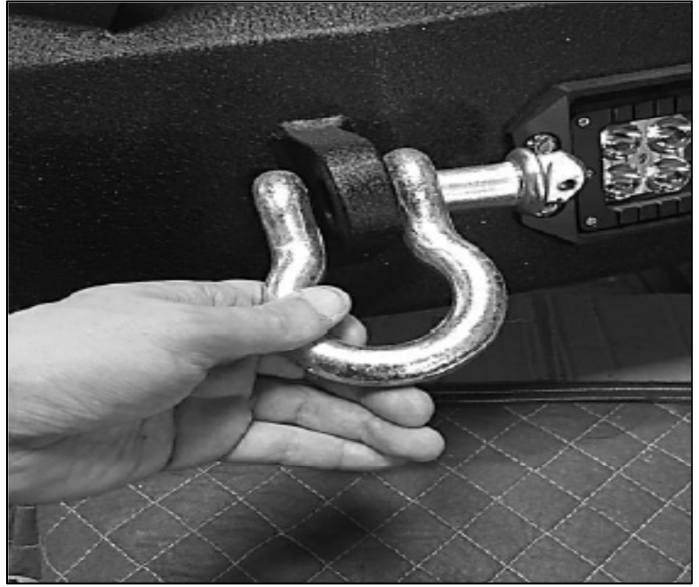


Step 1
Install supplied bumper (A) onto vehicle as shown. Line up bumper bolts with OE frame holes.

INSTALLING FRONT BUMPER continued



Step 2.
Place supplied flat washer (E) with supplied split washer (F) onto bumper bolt. Start a supplied M12x1.75 hex head nut (G) at the end of bolt. Tighten down using a 18mm socket. Repeat step for remaining hex head nut. Repeat step for other side.



Step 3.
Install supplied D-Rings shackles (H) onto D-ring tabs on the bumper.



Proceed to make electrical connections for the LED lights. If you are not qualified to make the proper connections, we highly recommend that you contact an installation expert to complete the connections.

This completes the installation.