

KEY TO COMPONENTS

- A. 1 ea. Rear bumper
- B. 2 ea. L bracket
- C. 8 ea. Hex head bolts M12x1.75 35mm
- D. 8 ea. Hex head nut M12x1.75
- E. 8 ea. M12 Split washer
- F. 16 ea. M12 Flat washer
- G. 2 ea. D-Rings

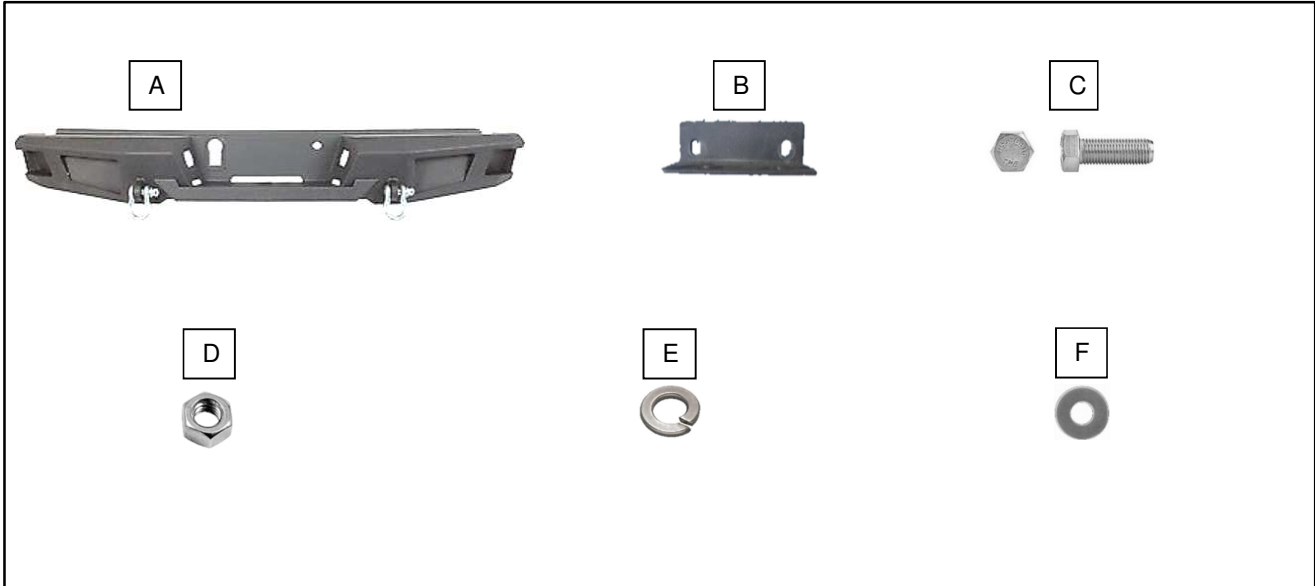
TOOLS NEEDED

- Ratchet
- 18mm socket
- 18mm wrench
- 21mm socket
- 13mm socket

HD Rear Bumper Installation Instructions

PART NUMBER T542488

FITS FORD F-150 15-19



Please take a few minutes to read and thoroughly familiarize yourself with the installation procedures outlined in this manual. Following the steps as outlined will save you time and help reduce mistakes. Once the instructions are reviewed, if you feel that you are not capable of safely installing the parts seek the help of a qualified installation expert to help you complete the job. The manufacture is in no way responsible for any personal injury or vehicle damage that may occur during the installation.

NOTE: The bumper is a heavy product and it is recommended to have 2 people available for installation.

California Proposition 65 Warning!

This product may include one or more chemical known to the State of California to cause cancer and birth defects or other reproductive harm. For more information go to www.P65Warnings.ca.gov.

FACTORY BUMPER REMOVAL

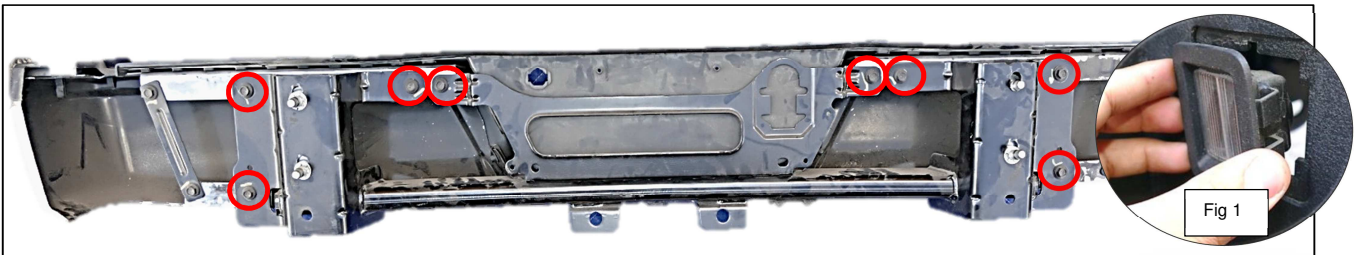


Step 1. Working underneath the vehicle. Disconnect the license plate lights. Repeat for other side. If your vehicle is equipped with a tow hitch receiver plug disconnect at this time.



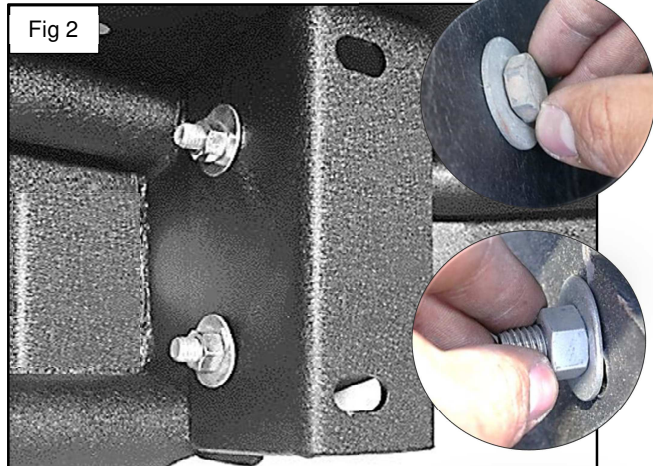
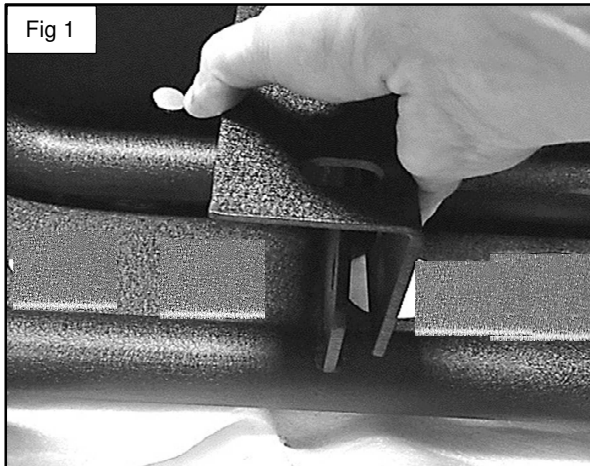
Step 2. Using a 18mm socket locate and remove 4 factory bolts that hold the bumper to the frame of the vehicle (2 on each side). With help from an assistant remove factory bumper from vehicle. Set hardware and bumper aside for later use.

REMOVING FACTORY BUMPER SUB FRAME



Step 1. Turn factory bumper upside down on work bench. Using a 13mm socket locate and remove 8 factory bolts holding the factory bumper onto the bumper sub frame. Remove factory bumper sub frame from bumper set aside for later use. Discard hardware. At this time remove factory license plate light housing from bumper fig 1 set aside for later use.

INSTALLING NEW BUMPER



Step 1. Install supplied L brackets (B) onto the new bumper (A) as shown Fig 1. **NOTE:** the L bracket should face towards the outside of the bumper. Place a supplied M12x1.75 35mm hex head bolt (C) with supplied M12 flat washer (F) through the bumper holes and through the L brackets fig 2. Place a supplied M12 flat washer and supplied M12 split washer (E) at the end of bolt. Start a supplied M12x1.75 hex head nut at the end of the bolt. Repeat step for remaining bolt. Tighten all hardware using a 18mm wrench. Repeat step for other side.

INSTALLING NEW BUMPER continued



Step 2. Install factory bumper sub frame onto supplied bumper (A) as shown above. Line up bumper sub frame holes with L brackets holes.



Step 3. Place a supplied M12x1.75 35mm hex head bolt (C) with supplied M12 flat washer (F) from behind the bumper holes and through the holes in the bumper sub frame. Place a supplied M12 flat washer and supplied M12 split washer (E) onto the bolt. Start a supplied M12x1.75 hex head nut on the bolt. Repeat step for other bolt. Tighten down all hardware using a 18mm wrench. Repeat step for other side.



Step 4. With help from an assistant place the supplied bumper (A) onto vehicle as shown above. Line up factory bumper sub frame studs to the vehicle mounting holes. Start factory nuts onto the bolts circled above. Tighten down using 21mm socket. Repeat step for other side.

INSTALLING NEW BUMPER continued



Step 6. Install factory license plate light housing onto new bumper. Repeat for other side.



Step 7. Reconnect license plate light as shown above. Repeat for other side. If your vehicle is equipped with a tow hitch receiver plug reconnect at this time.



Step 8. Install supplied D-Rings shackles (G) onto D-ring tabs on the bumper.



This completes the installation.