

HD LED Rear Bumper

Installation Instructions

KIT INCLUDES:
Rear Bumper
2 D-Rings
Wiring Harness

| TOOLS NEEDED FOR INSTALLATION | |
|-------------------------------|---------------------------------|
| Ratchet | OPTIONAL |
| 21mm Socket | Socket Extension |
| 10mm Socket | Power Drill with Socket Adapter |

PART NUMBER T542490
FITS Ford F-150 09-14

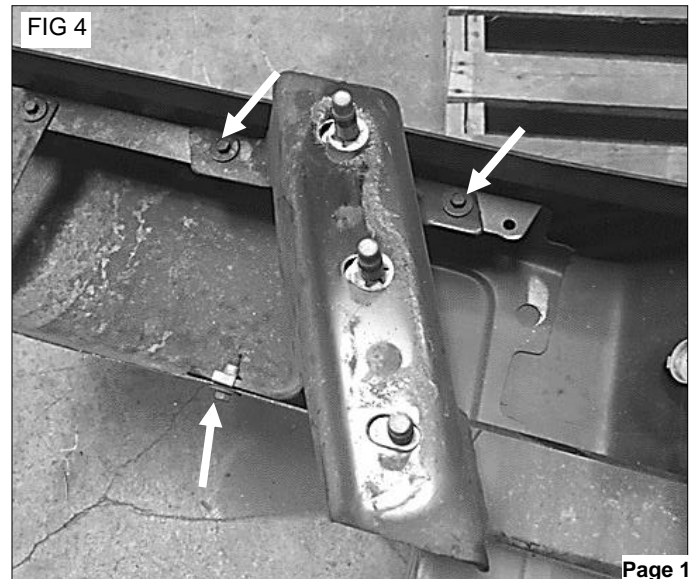
PRIOR TO INSTALLATION

- Read these instructions and make sure kit is complete before beginning the installation.
- **NOTE:** The bumper is a very heavy product and it is recommended to have 2 people available for installation.
- **NOTE:** The bumper comes complete with LED lights which need to be connected to a power source. If you are not qualified to make the proper connections, we highly recommend that you contact an installation expert to complete the connections. The hardware kit comes complete with a wiring harness. This harness can be used to connect the LED lights to your power supply. They are included for your convenience but your specific installation may require additional wiring and other components not supplied in our hardware kit.

Removal of Bumper

Step 1. Removal of Factory Rear Bumper

- Locate and disconnect the hitch receiver behind the bumper. **Fig 1**
- Locate and disconnect the 2 license plate lights. **Fig 2**
- Locate and remove the six 21mm nuts (3 per side) that are attaching the bumper / hitch assembly to the frame. **Fig 3**
- Move the bumper to a work bench or on a mat on the floor.
- Locate the six 10mm bolts (3 per side) that hold the hitch assembly to the bumper and remove them. **Fig 4**



New Bumper Installation

Step 1. Attach Tow Hitch to New Bumper

- Using the OEM 10mm bolts that were removed from the OEM bumper attach the tow hitch assembly to the new bumper in the same way it was removed from the OEM one. **Fig 5**
- Line up the bolts from the hitch to the holes located in the truck frame and attach bumper using OEM 21mm nuts from the removal process. **Fig 6**
- Reconnect the tow hitch receiver and license plate lights to the new bumper.
- The installation is now complete!

FIG 5



FIG 6

