



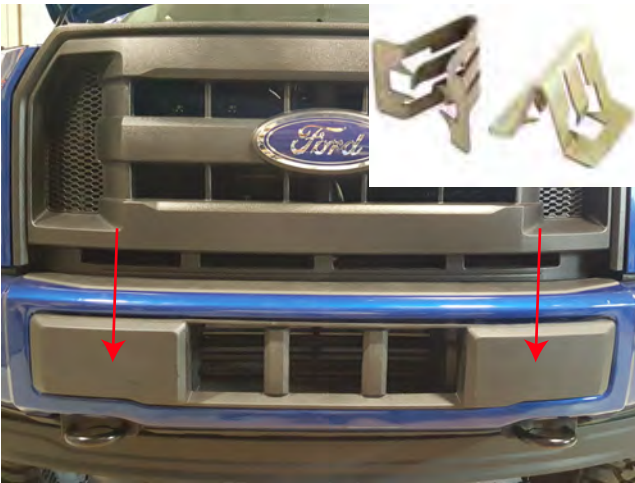
Front Bumper w/ LED Fog Lights (15-17 F150)

CONTENTS:

- | | |
|---------------------------------|-------------------------|
| (1) Front Bumper | (4) M8x25mm Hex Bolts |
| (1) Skid Plate | (2) M8x25mm Allen Bolts |
| (1) LED Light Bar Option Grille | (2) M8x20mm Allen Bolts |
| (1) Solid Mesh Option Grille | (8) M8 Lock Washers |
| (2) Fog Light Bezels | (6) M8 Nuts |
| (2) Fog Lights | (9) M6x20mm Allen Bolts |
| (2) Fog Light Harness Adaptors | (2) M6x15mm Allen Bolts |
| (1) License Plate Bracket | (9) M6 Flat Washers |
| (4) Tow Hook Spacers | (9) M6 Lock Washers |
| (2) LED Light Bar Brackets | (2) M6 Nuts |
| (2) M12 C-Clips | |
| (10) Zip Ties | |
| (3) Allen Wrenches | |
| (6) Plastic Bolt Holders | |
| (4) M12x55mm Bolts | |
| (2) M12x35mm T-Bolts | |
| (6) M12 Flat Washers | |
| (6) M12 Lock Washers | |

TOOLS REQUIRED:

16mm, 18mm, 21mm Sockets
Ratchet
10mm Wrench
Trim Panel Removal Tool
Allen Wrench



STEP 1 // Using a panel removal tool, remove the plastic bumper insert. It is held on with several metal push clips.



STEP 3 // Unplug the factory fog light connectors, and unclip the wiring harness from the bumper. Remove the lower (2) 21mm nuts. Then remove the front bumper from the vehicle.
**Note: Factory hardware will be reused.



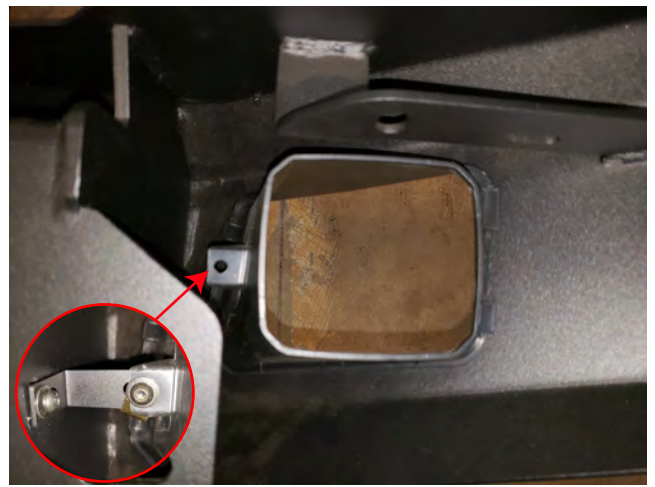
STEP 2 // Loosen the upper (4) 21mm nuts holding the front bumper to the support beam of the vehicle. **Note Factory hardware will be reused.



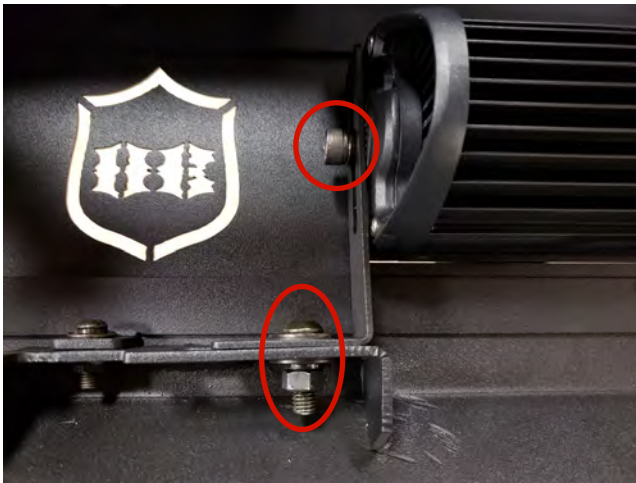
STEP 4 // If vehicle is equipped with the factory tow hooks, remove the (2) 18mm bolts securing the tow hooks to the frame rail. Then reinstall the tow hooks spacing them away from the frame rail using the (2) spacers, (2) M12x55 bolts, flat washers, and lock washers.



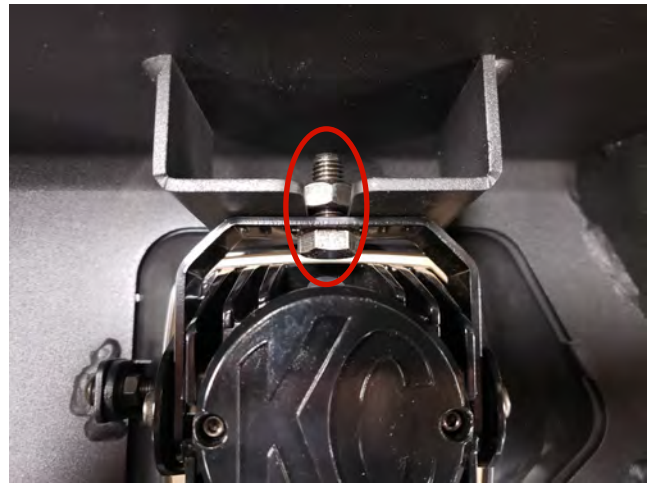
STEP 5 // Attach the front license plate bracket to the new Deegan 38 bumper if a front license palte is required using the (2) M6 screws, lock washers, and nuts.



STEP 8 // Using a 10mm wrench, allen wrench, (2) M8 allen bolts, and (2) M8 nuts, install the fog light bezels to each side of the bumper.



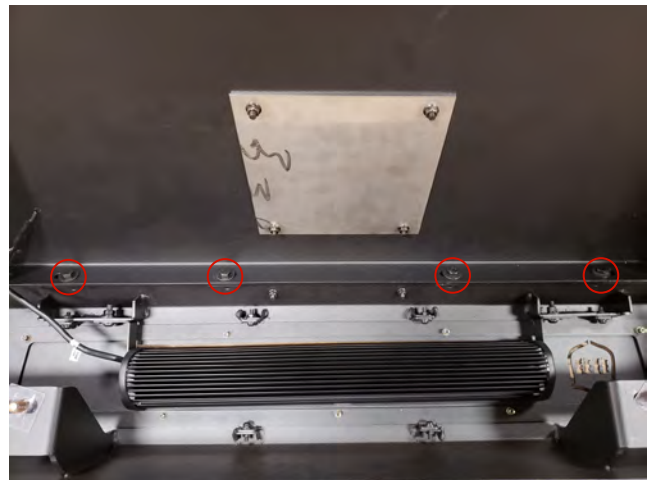
STEP 6 // If purchased with the LED lightbar option, install the (2) LED light bar brackets, (2) M8x25mm allen bolts, (4) M8 flat washers, (2) M8 lock washers, and (2) M8 nuts to the lower part of the bumper. Install the (1) LED light bar to the upper part of the LED light bar bracket using the (2) M8x20mm allen bolts, and lock washers. ****Note:** If you did not purchase the LED light bar option, use solid mesh grille option.



STEP 9 // Install the LED lights using the hardware provided in the light packaging.



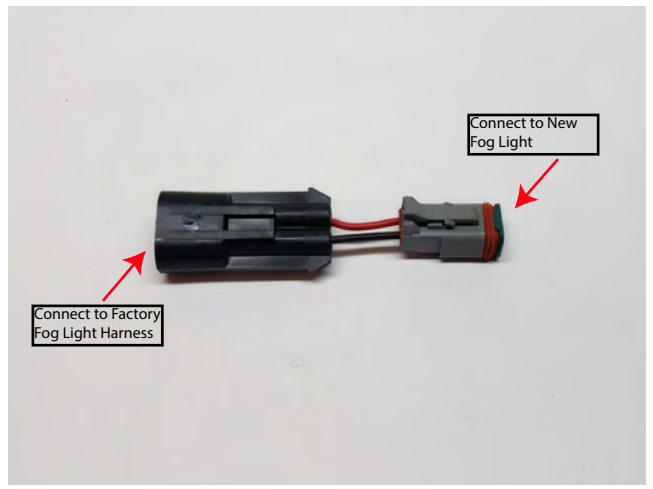
STEP 7 // Using the supplied (6) plastic bolt holders, attach the factory bolts to the Deegan 38 bumper.



STEP 10 // Install the Deegan 38 skid plate to the bumper using the (4) M8x25 hex bolts, (8) flat washers, (4) lock washers, and (4) nuts.



STEP 11 // From under the vehicle, locate and insert the (2) skid plate c-clips into the factory core support.



STEP 14 // Using the supplied (2) fog light adaptor harnesses, connect one end to the vehicles factory fog light harness, and the opposite end to the new Deegan 38 fog light.



STEP 12 // Slide bumper into place, and secure using the factory hardware. Be sure to center the bumper, and adjust height of bumper to desired location. Once desired location is met, torque to 40 ft-lbs.



STEP 15 // **Optional LED Lightbar Wiring:** Connect the (1) LED Lightbar into the supplied harness. Be sure to zip tie the access wiring away from any damage that could occur.



STEP 13 // Install the rear section of the skid plate to the core support of the vehicle and into the c-clips installed in step 11 using the (2) M12 t-bolts, flat washers, and lock washers.



STEP 16 // **Optional LED Lightbar Wiring:** Install the Red 12+ volt wire to the positive battery terminal. Connect the black ground wire to the negative battery terminal. Mount the fuse in a safe location away from any damage that could occur. Tuck away any extra wiring.



STEP 17 // Optional LED Lightbar Wiring: Route the on/off switch to the interior of the vehicle using a suitable body grommet. Mount the switch in the desired location. Zip tie any extra loose wiring away from any damage that could occur.