



Grille w/30" LED Light Bar (15-17 F150)

Contents:

- (1) Grille
- (1) 30" LED Light Bar
- (1) LED Light Bar Wiring Harness
- (2) LED Light Bar Mounting Brackets
- (2) M8x25mm Hex Bolt
- (4) M8 Flat Washers
- (2) M8 Lock Washers
- (2) M8 Nuts
- (8) M6x30mm Allen Bolts
- (3) M6x25mm Allen Bolts
- (18) M6 Flat Washers
- (8) M6 Lock Nuts
- (4) Speed Clips
- (1) Allen Wrench

TOOLS REQUIRED:

- 13mm Socket
- Ratchet



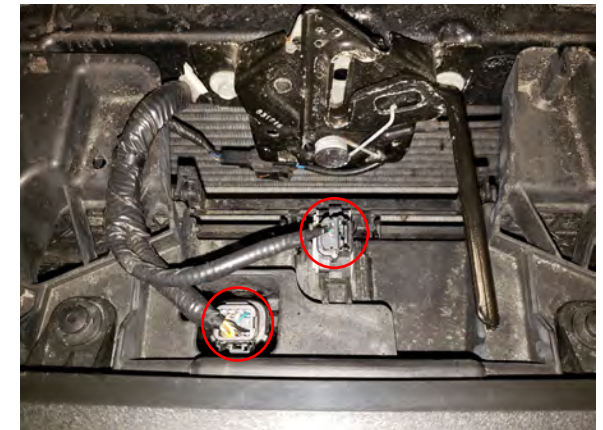
STEP 1 // Begin by locating the (9) plastic push clips securing the factory radiator cover, and remove using a trim panel removal tool.



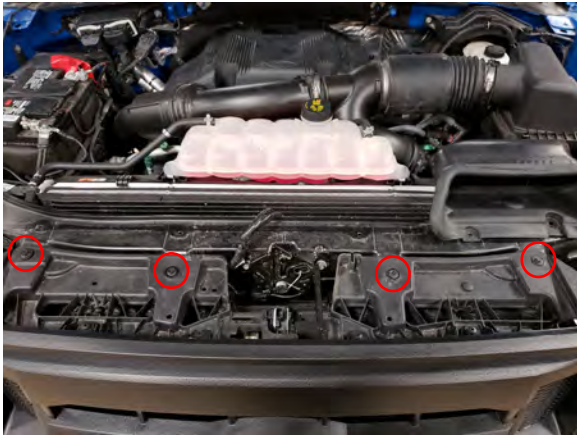
STEP 3 // Locate, and remove the (2) 7mm screws holding the headlight bezel to the splash shield.



STEP 2 // Using a trim panel removal tool, remove the push clip securing the upper headlight bezel in place.



STEP 4 // Carefully unplug the wiring connections for the grille's shutter system to the factory grille.



STEP 5 // Locate, and remove the upper (4) 10mm screws securing the grille to the vehicle. **Note: Hardware will be reused.



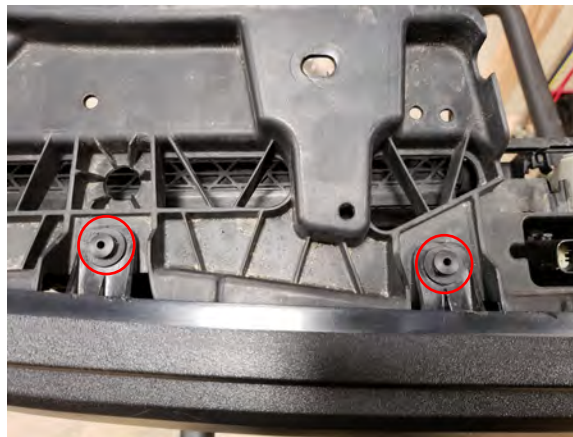
STEP 7 // Locate, and remove the lower (2) 8mm bolts securing the grille to the vehicle. Grille will now be free, carefully pry the factory grille away from the vehicle. **Note: Hardware will be reused.



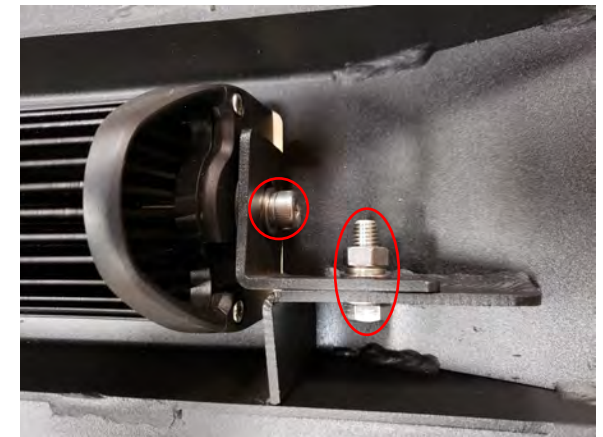
STEP 9 // Separate the grille from the base by removing the (2) 10mm lock nuts on each side of the grille. Then remove the (3) 10mm nuts across the bottom. The grille will now separate from the base.



STEP 6 // Using a trim panel removal tool, remove the (3) push clips securing the heat shielding to the factory grille.



STEP 8 // The factory grille is two pieces. Remove the (2) push clips on each side (4) total across the top of the grille and base.



STEP 10 // Install the (2) LED light bar mounting brackets to the grille using the (2) M8x25mm hex bolts, (4) flat washers, (2) lock washers, and (2) nuts. Then install the (1) 30" light bar to the bracket using the supplied hardware.



STEP 11 // Install the new Deegan 38 grille to the factory base by using the (8) M6x30mm allen bolts, (12) flat washers, (4) lock nuts, and (4) speed clips on the sides and across the top. Then install the (3) M6x25mm allen bolts, (6) flat washers, and (3) lock nuts across the bottom.



STEP 13 // Reinstall the headlight bezels, and radiator cover in reverse form.



STEP 15 // Install the Red 12+ volt wire to the positive battery terminal. Connect the Black ground wire of the negative battery terminal. Mount the fuse in a safe location away from any damage that could occur. Tuck away any extra wiring.



STEP 12 // Using the hardware from steps 5 & 7, install the grille to the vehicle. **Note: Be sure to align the grille in the center position of the headlights.



STEP 14 // Connect the (1) LED lightbar into the supplied harness. Be sure to zip tie the access wiring away from any damage that could occur.



STEP 16 // Route the on/off switch to the interior of the vehicle using a suitable body grommet. Mount the switch in the desired location. Zip tie any extra loose wiring away from any damage that could occur.