

## TPI Prerunner Front Bumper w/Skid Plate (09-14 F150)

### Contents:

- (1) - Bumper
- (1) - Skid Plate
- (1) - Mid Plate
- (1) - Non Lightbar Grille Cover
- (1) - Lightbar Grille Cover
- (1) - Override Bar
- (2) - Override Block Off Covers
- (1) - License Plate Bracket
- (2) - Override Light Bar Brackets
- (2) - Inner Mid Plate Brackets
- (2) - Outer Mid Plate Brackets
- (2) - Bumper Grille Lightbar Brackets
- (23) - M8x1.25x30mm Allen Bolts
- (4) - M8x1.25x20mm Hex Bolts
- (6) - M8 Small Flat Washers

- (46) - M8 Flat Washers
- (27) - M8 Lock Washers
- (27) - M8 Nuts
- (2) - M10x1.50x30 Hex Bolts
- (2) - M10 Flat Washers
- (2) - M10 Lock Washers
- (2) - Speed Clips
- (1) Allen Wrench

### TOOLS REQUIRED:

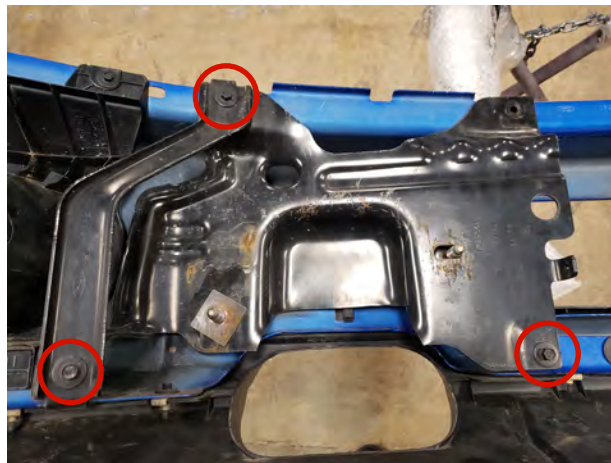
- 8, 10, 13, 15, 16, 21mm Sockets
- Ratchet
- Allen Wrench



**STEP 1** // Open the hood. Locate and remove the (2) 8mm screws that hold the hood latch release plate to the factory bumper lip.



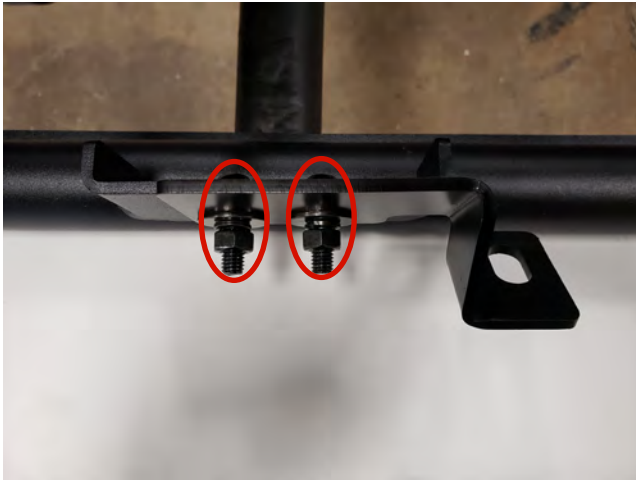
**STEP 2** // Next, loosen the upper (4) 21mm nuts holding the front bumper to the support beam of the vehicle. Remove bumper. \*\*Note: Factory hardware will be reused.



**STEP 3** // Remove the (3) 10mm bolts on each side of the factory bumper, and remove the dual bolt plate. This will be used to secure the new bumper.



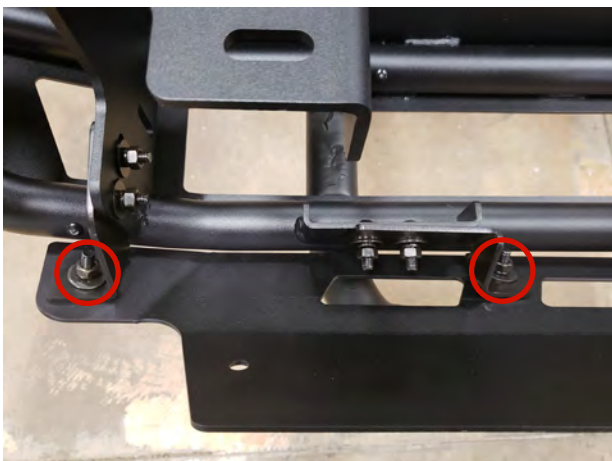
**STEP 4** // Install the optional override bar with the optional (2) lightbar mounts onto the bumper using the (3) M8x30 allen bolts, (6) M8 flat washers, (3) M8 lock washers, and (3) M8 nuts. Repeat on opposite side. If choosing to not use the override bar, use the (2) override block off plates.



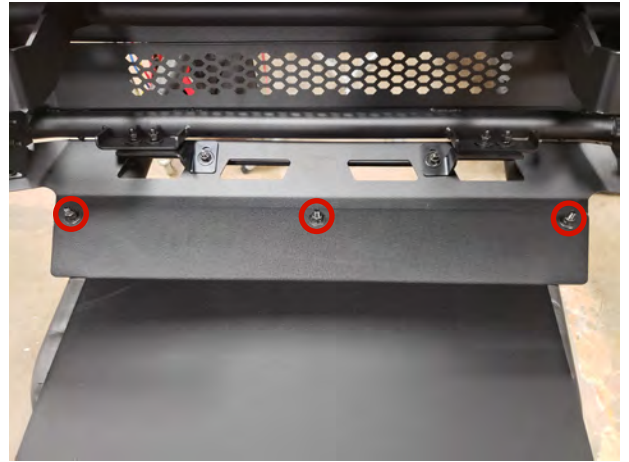
**STEP 5** // Install the (2) inner mid plate brackets with the optional (2) grille lightbar brackets using the (2) M8x30 allen bolts, (4) flat washers, (2) lock washers, (2) lock washers, and (2) nuts. Repeat on each side.



**STEP 6** // Install the (2) inner mid plate brackets using the (2) M8x30 allen bolts, (4) flat washers, (2) lock washers, and (2) nuts. Repeat on each side.



**STEP 7** // Install the mid plate to the bumper using the (2) M8x30 allen bolts, (4) flat washers, (2) lock washers, and (2) nuts. Repeat on each side.



**STEP 8** // Attach the skid plate to the mid plate using (3) M8x30 allen bolts, (6) M8 flat washers, (3) M8 lock washers, and (3) M8 nuts.



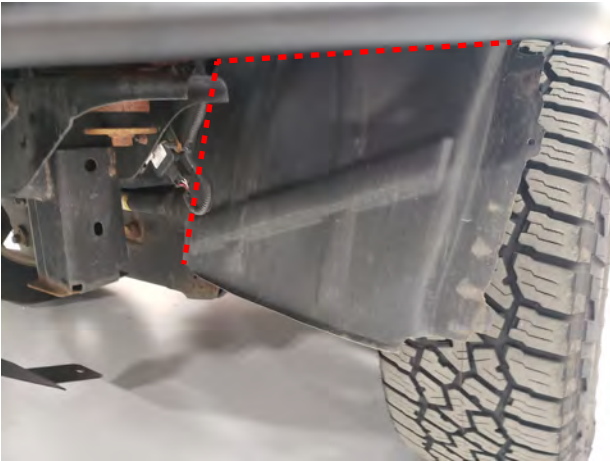
**STEP 9** // Locate, and remove the (4) 15mm bolts securing the factory skid plate. Remove skid plate.



**STEP 10** // Attach the bumper to the vehicle using the factory hardware. Be sure to center the bumper, and adjust height to desired location.



**STEP 11** // Insert the (2) speed clips into the body of the vehicle and secure the skid plate to the vehicle using the (2) M10x30 bolts, flat washers, and lock washers.



**STEP 12** // Remove / modify / secure the factory inner fender liners. Secure any and all factory components away from tire or suspension components. Installation is now complete.