

TPI Prerunner Front Bumper w/Skid Plate (18+ F150)

Contents:

- (1) - Bumper
- (1) - Skid Plate
- (1) - Mid Plate
- (1) - Non Lightbar Grille Cover
- (1) - Lightbar Grille Cover
- (1) - Override Bar
- (2) - Override Block Off Covers
- (1) - License Plate Bracket
- (2) - Override Light Bar Brackets
- (2) - Inner Mid Plate Brackets
- (2) - Outer Mid Plate Brackets
- (2) - Bumper Grille Lightbar Brackets
- (23) - M8x1.25x30mm Allen Bolts
- (4) - M8x1.25x20mm Hex Bolts
- (6) - M8 Small Flat Washers

- (46) - M8 Flat Washers
- (27) - M8 Lock Washers
- (27) - M8 Nuts
- (1) Allen Wrench

TOOLS REQUIRED:

- Trim Panel Removal Tool
- 13, 15, 21mm Sockets
- Ratchet
- Allen Wrench



STEP 1 // Using a panel removal tool, remove the plastic bumper insert. It is held in with several metal push clips.



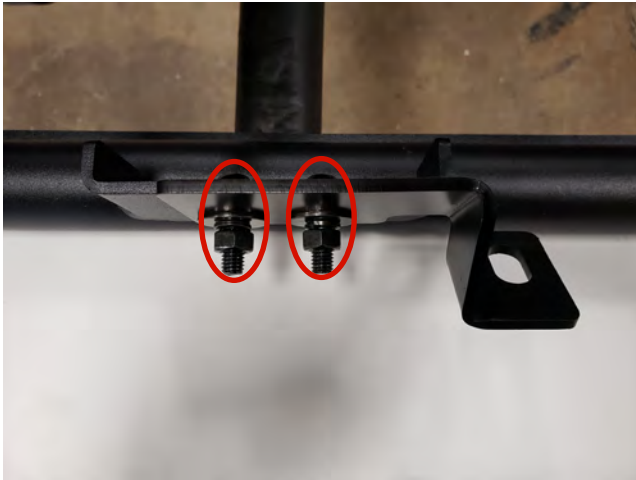
STEP 2 // Next, loosen the upper (4) 21mm nuts holding the front bumper to the support beam of the vehicle.
**Note: Factory hardware will be reused.



STEP 3 // Unplug the factory fog light connectors on each side and unclip the wiring harness from the bumper. Remove the lower (2) 21mm nuts, one on each side. Then remove the front bumper from the vehicle. **Note: Factory hardware will be reused.



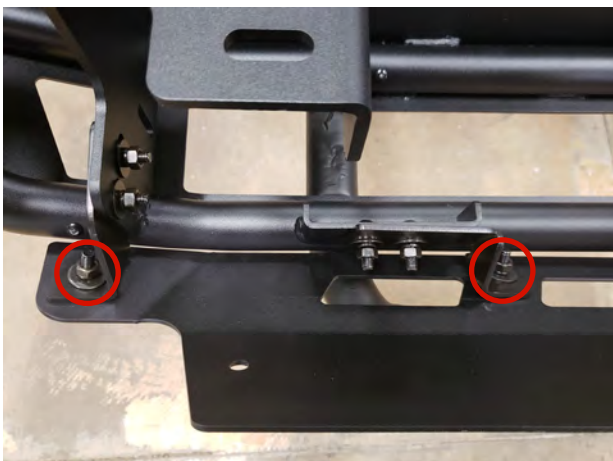
STEP 4 // Install the optional override bar with the optional (2) lightbar mounts onto the bumper using the (3) M8x30 allen bolts, (6) M8 flat washers, (3) M8 lock washers, and (3) M8 nuts. Repeat on opposite side. If choosing to not use the override bar, use the (2) override block off plates.



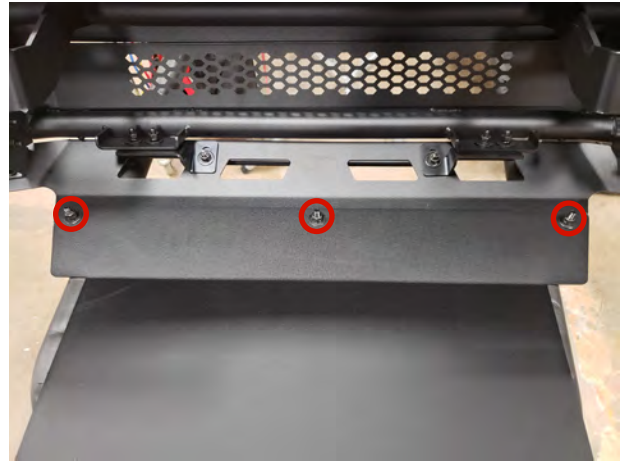
STEP 5 // Install the (2) inner mid plate brackets with the optional (2) grille lightbar brackets using the (2) M8x30 allen bolts, (4) flat washers, (2) lock washers, (2) lock washers, and (2) nuts. Repeat on opposite side.



STEP 6 // Install the (2) inner mid plate brackets using the (2) M8x30 allen bolts, (4) flat washers, (2) lock washers, and (2) nuts. Repeat on opposite side.



STEP 7 // Install the mid plate to the bumper using the (2) M8x30 allen bolts, (4) flat washers, (2) lock washers, and (2) nuts. Repeat on opposite side.



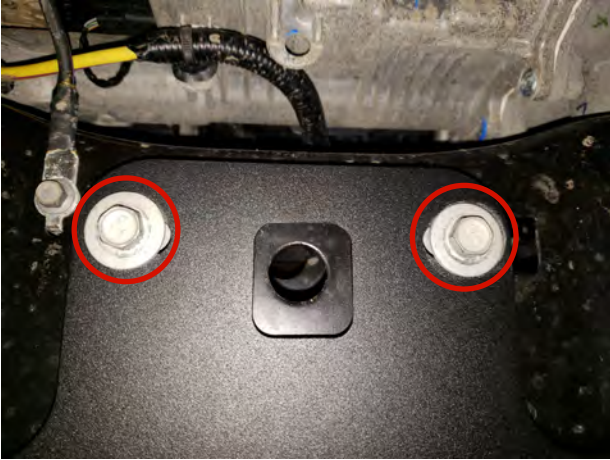
STEP 8 // Attach the skid plate to the mid plate using (3) M8x30 allen bolts, (6) M8 flat washers, (3) M8 lock washers, and (3) M8 nuts.



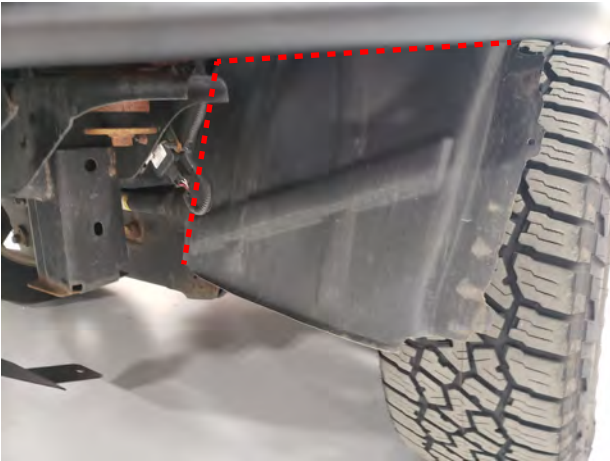
STEP 9 // Locate, and remove the (2) 15mm bolts securing the factory skid plate covering the power steering.. Remove skid plate. **Note: Factory hardware will be reused.



STEP 10 // Attach the bumper to the vehicle using the factory hardware. Be sure to center the bumper, and adjust height to desired location.



STEP 11 // Using the factory hardware from Step 9, secure the skid plate to the vehicle to the factory power steering skid plate location.



STEP 12 // Remove / modify / secure the factory inner fender liners. Secure any and all factory components away from tire or suspension components. Installation is now complete.