

# PreRunner Rear Bumper (06-14 F150)

## CONTENTS:

- (1) Rear Bumper
- (2) Mesh Grille Inserts
- (2) Fog Lights
- (1) Fog Light Harness
- (8) M6x1.0x15mm Allen Screws
- (16) M6 Flat Washers
- (8) M6 Lock Washers
- (8) M6 Nuts
- (8) M4x0.7x10mm Screws
- (4) Rear Camera Rubber Plugs
- (10) Zip Ties
- (2) License Plate Screw Holders
- (2) Allen Wrench

## TOOLS REQUIRED:

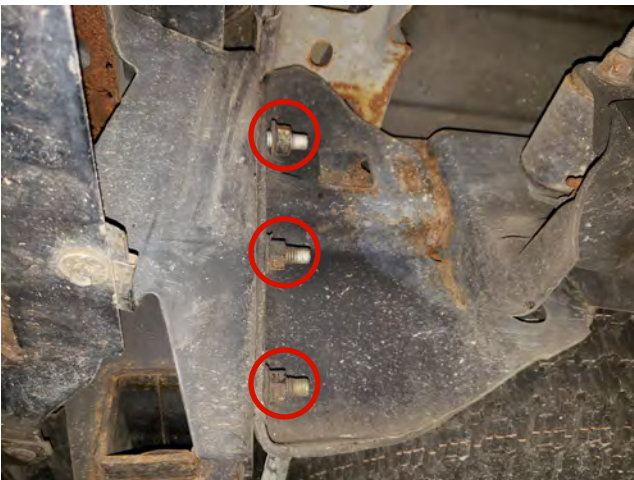
- 15mm, 18mm, 21mm Sockets
- 3/8" or 1/2" Ratchet & Extensions
- 10mm Wrench
- Trim Panel Removal Tool
- Allen Wrench



**STEP 1** // Unplug the factory license plate light harnesses, and the trailer plug connector and pull away from the bumper. If equipped unplug and remove the factory backup sensors.



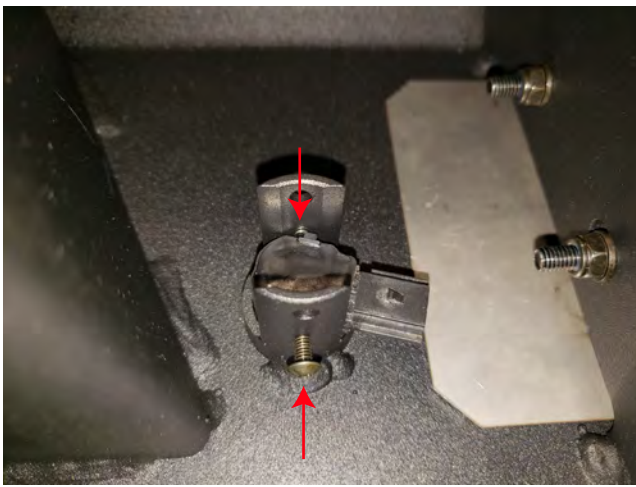
**STEP 3** // Using your factory ignition key, turn the spare tire lock counter clockwise and remove the spare tire lock from the factory bumper. Transfer it to the new bumper.



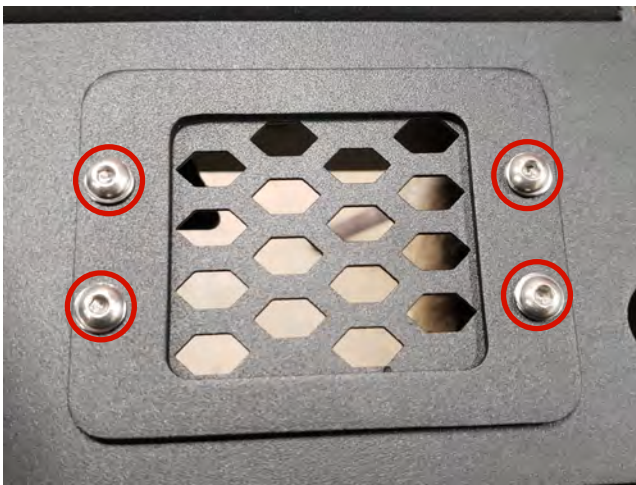
**STEP 2** // From under the vehicle, remove the (6) 21mm nuts holding the rear bumper to the frame rail of the vehicle. Remove the bumper. \*\*Note: Factory hardware will be reused.



**STEP 4** // Using a trim panel removal tool, push in the plastic tabs around the license plate lights and remove them from the factory bumper. Install these in the new bumper by gently pushing them in place until they click in.



**STEP 5** // If equipped re-install the factory reverse sensors w/ the rubber grommet flush to the outer face of the bumper.  
**\*\*Note:** The factory trim bezel does not get re-used. Using the supplied 4mm screws to apply slight pressure to either side of the sensor. Over tightening of the screws can cause sensor damage. For vehicles w/o sensors install the supplied rubber plugs.



**STEP 6** // If choosing not to use the LED fog lights, install the (2) mesh grille inserts into the bumper using the (4) M6x1.0x15mm screws, lock washers, and nuts.



**STEP 7** // **Optional Light:** If choosing the LED fog light option, install the (2) LED Fog lights into the bumper using the (4) M6x1.0x15mm screws, lock washers, and nuts.



**STEP 8a** // If your vehicle is not equipped with a trailer hitch receiver, remove the factory triple bolt plate and insert through the back of the bumper mount plate.



**STEP 8b** // If your vehicle is equipped with a factory trailer hitch receiver, remove the (3) factory 10mm bolts on each side from the factory bumper, and remove the hitch receiver assembly. Install the hitch receiver over top of the bumper mount plate, and insert the factory triple bolt plate through the back of the mounting tabs.



**STEP 9** // Attach the prerunner bumper to the vehicle using the factory (6) 21mm nuts. Be sure to center the bumper, and adjust height of bumper to desired location. Then reinstall the trailer plug and license plate harnesses. If equipped, reinstall the backup camera harnesses.



**STEP 10 // Optional Light Wiring:** Connect the (2) LED Fog lights into the supplied harness. Be sure to zip tie the access wiring away from any damage that could occur.



**STEP 11 // Optional Light Wiring:** Install the Red 12+ volt wire to the positive battery terminal. Connect the Black ground wire to the negative battery terminal. Mount the fuse in a safe location away from any damage that could occur. Tuck away any extra wiring.



**STEP 12 // Optional Light Wiring:** Route the on/off switch to the interior of the vehicle using a suitable body grommet. Mount the switch in the desired location. Zip tie any extra loose wiring away from any damage that could occur. Installation is now complete.