
SOFT ROLL-UP TONNEAU COVER

INSTALLATION INSTRUCTIONS

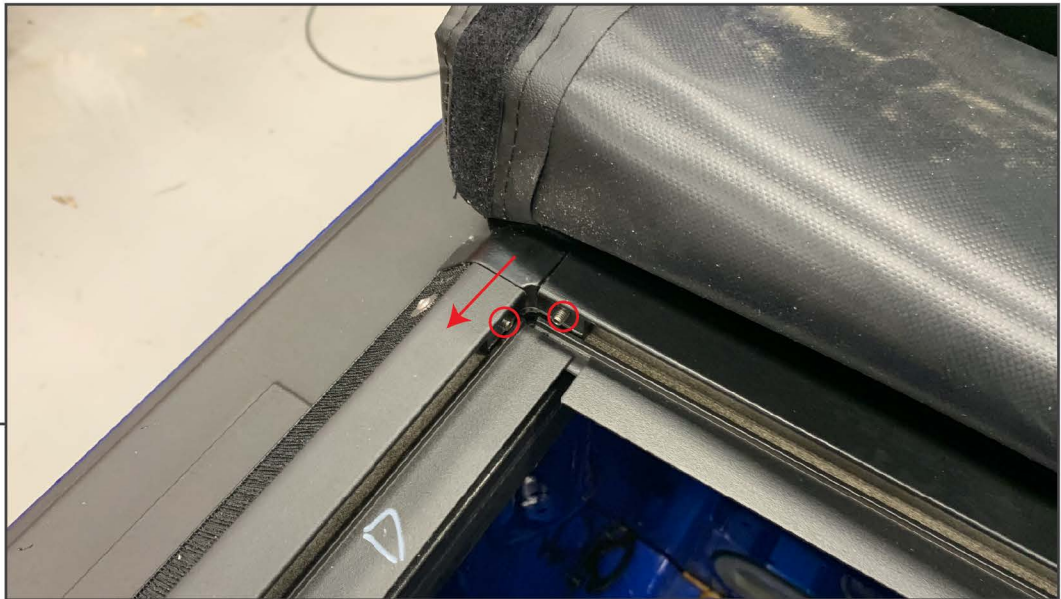
CONTENTS

- (1) Soft Roll-Up Tonneau Cover
- (6) Rail Clamps
- (6) Bed Clamps
- (6) Rubber Bed Clamp Covers
- (7) Nut Inserts
- (7) Allen Screws
- (1) 4mm Allen Wrench
- (1) 2.5mm Allen Wrench

TOOLS REQUIRED

- 4mm Allen Wrench (Included)
- 2.5mm Allen Wrench (Included)

STEP 1



Lay the bed rails on the truck so that the hook and loop faces out. The open end of the rail will face the back of the truck cab. Insert the tonneau cover into the bed rails. Using the provided Allen wrench, tighten the set screw. ****Note: Do not over tighten the set screw.**

STEP 2



Center the tonneau cover and bed rails on the truck. Align the rear most edge of the bed rail at the same location on both sides. This will help keep the bed rails square to the vehicle.

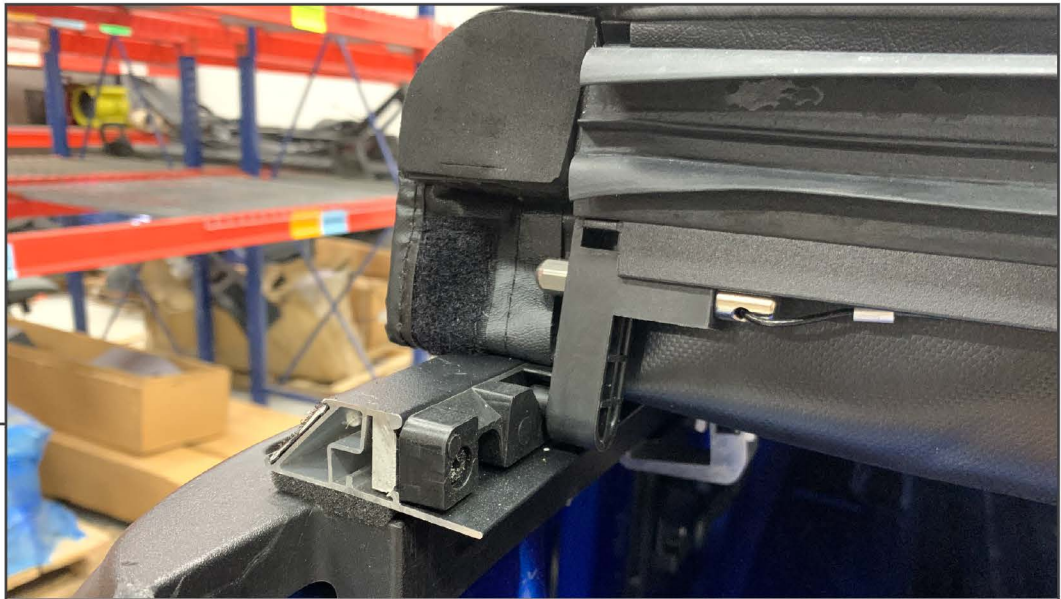
STEP 3

Place the rubber cover over the end of the bed clamp. Then place a nut insert into the clamp. Position the bed clamp into the rail clamp. Loosely thread the Allen bolt into the bed clamp. Apply slight downward pressure when tightening the Allen screw to start the threads. The Allen bolt will create its own threads in the nut insert. Do not fully tighten the clamps at this time.

STEP 4

Evenly space the clamps along the bed rail, (3) per side. Do not tighten the clamps yet.

STEP 5



Roll out the tonneau cover. Adjust the bed rails side-to-side until the tonneau covers evenly hooks into the lock at the end of the bed rail. Fold back the tonneau cover to tighten the clamps. This may take several tries. Then Firmly clip the tonneau cover down to lock it in place.

STEP 6



Fold up the tailgate to complete the installation.

STEP 7



Open the tailgate to locate the lock release. Gently pull on the lock release to unlock the tonneau cover from the bed rails.

STEP 8



Fold the tonneau cover up when not in use. Hook the elastic bands over the metal hooks to secure the tonneau cover in place.