

---

# ALUMINUM QUAD-FOLD HARD TONNEAU COVER

---

## INSTALLATION INSTRUCTIONS

### CONTENTS

---

- (1) Pair Side Rails
- (2) A Clamps
- (4) Clamps
- (6) M8x1.25 35mm Socket Bolts
- (2) M8x1.25 Flush Mount Bolts
- (8) M8 Flat Washers
- (2) M8 Nylon Lock Nuts
- (2) M5x0.8 15mm Allen Bolts
- (2) M5 Flange Nuts
- (6) Clamp Spacers

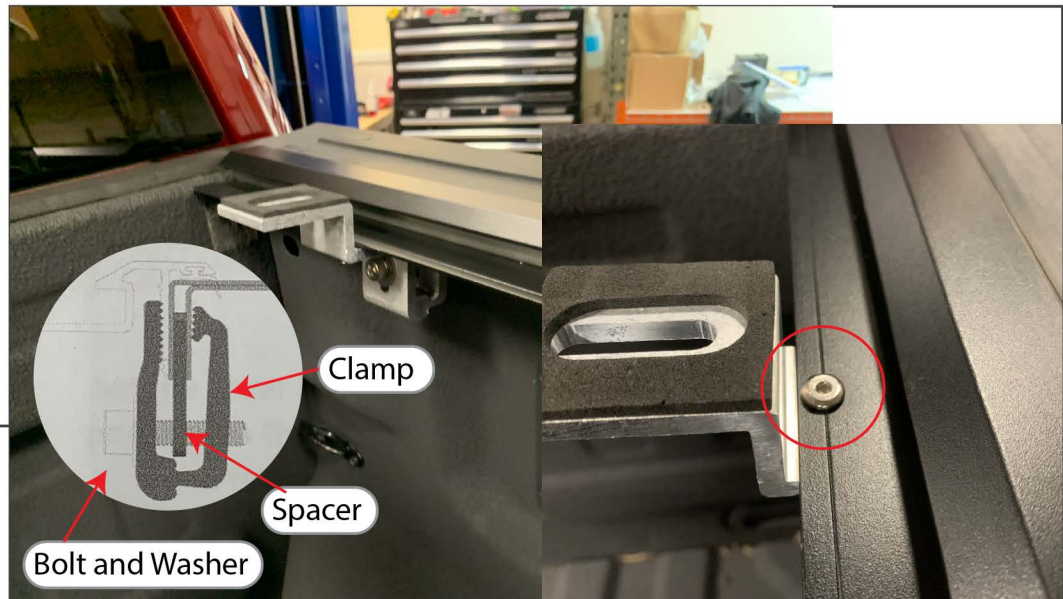
### TOOLS REQUIRED

---

- Large Allen Wrench (Provided)
- Small Allen Wrench (Provided)

---

**STEP 1**



Identify the side rails, the front of the side rails have a locating hole drilled roughly 6" from the front edge. Install the rail as far forward as possible so that it is touching the front of the bed. Secure the A clamp through the pre-drilled hole to the side rail using the M5 Allen bolt and flange nut. Secure the A-clamp to the vehicle using the provide M8 socket head bolt and washer. \*\*Note: If applicable, use the provided spacers between the factory sheet metal when installing clamps.

---

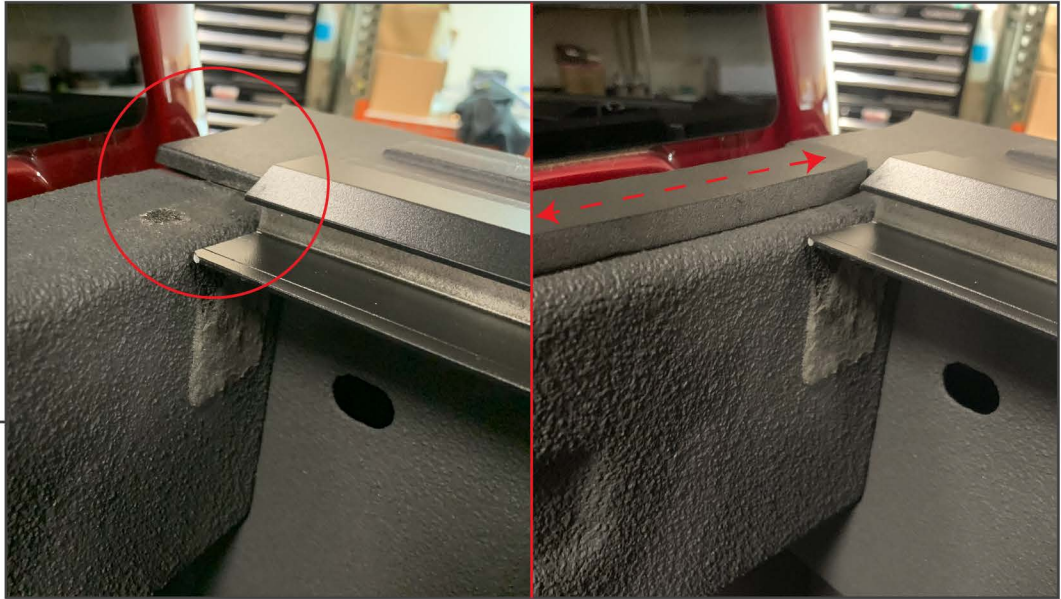
**STEP 2**



Evenly space the remaining clamps on the side rail. Secure using M8 socket head bolts and washers.

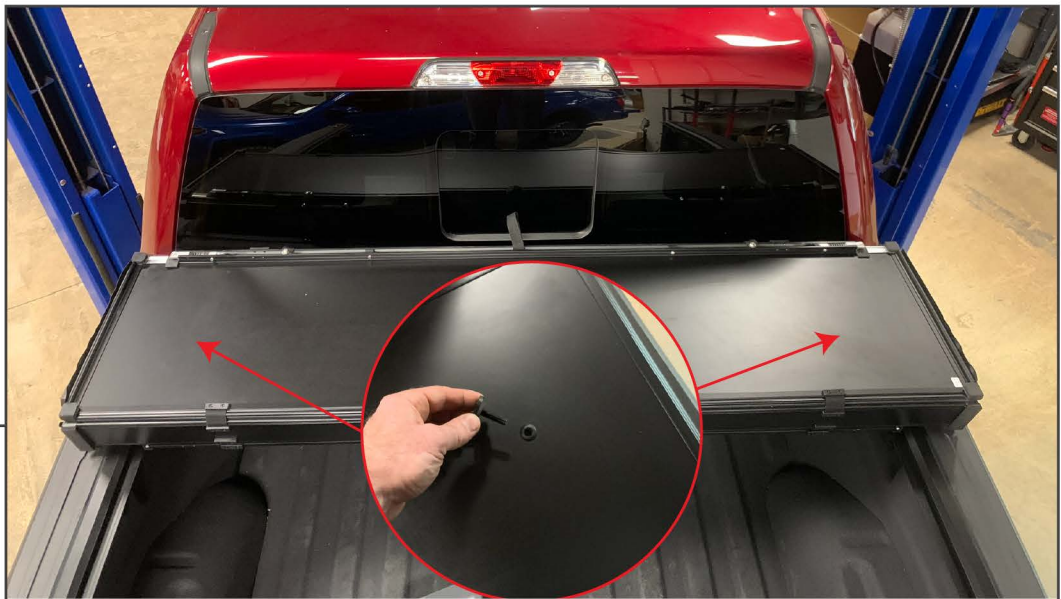
---

**STEP 3**



If the front edge of the bed sits below the side rails as shown, install the provided weather striping.

**STEP 4**

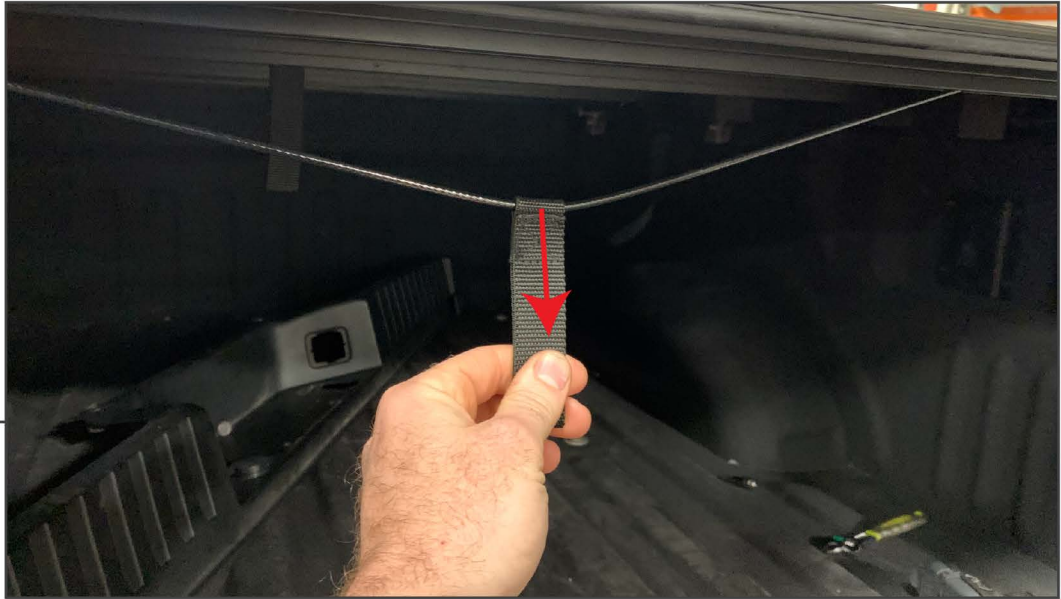


With a helper, place the tonneau cover onto the front of the bed. The panel with the pre-drilled hole will face down. Install the M8 flush mount bolt through the cover and into the A clamp, loosely install the washer and M8 lock nut. Center the tonneau cover between the bed rails before tightening the m8 lock nut.



---

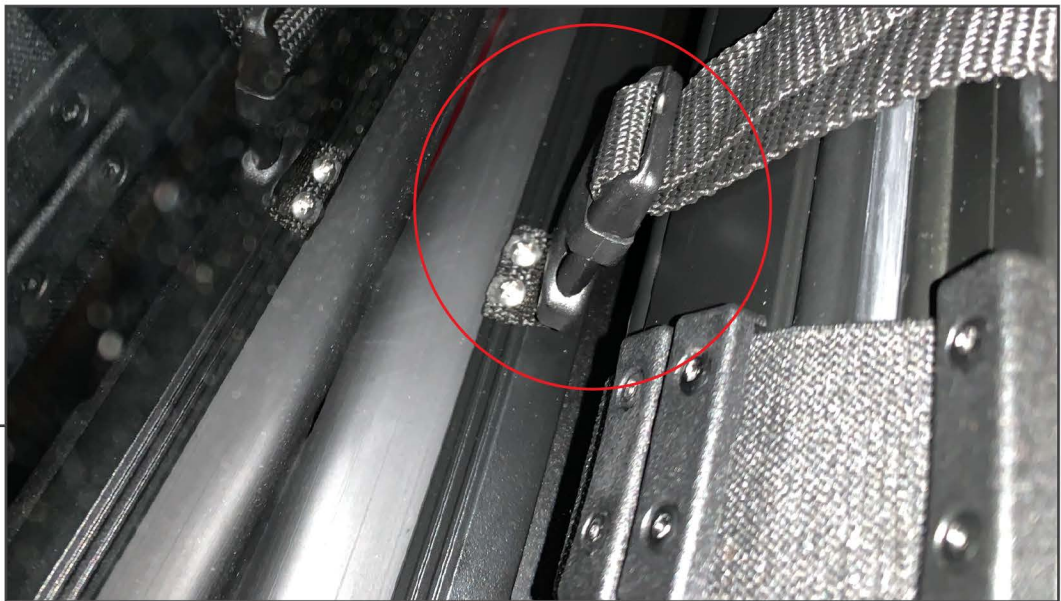
**STEP 5**



Fold back the tonneau cover. Each panel will lock independently to the side rails. You will need to pull the release for each panel as you fold the tonneau cover up.

---

**STEP 6**



Ensure the tonneau cover locks into the bed rails. If it does not, you will need to loosen the rail clamps and adjust the rails in or out to engage the locking tabs on the tonneau cover. When the tonneau cover is not being used, fold the cover back and secure it to the first panel using the nylon straps and clips on both sides.