



Innovation in Motion™
from Lund International™



2014

AMP RESEARCH TRUCK ACCESSORIES



**INVENTED, ENGINEERED
AND BUILT IN AMERICA
ONLY BY AMP RESEARCH**



For more than 30 years, AMP Research has been committed to a single pursuit: Developing products that move people. That solve problems. Making pickups more accessible, versatile and useful. That's why every product that AMP Research builds: **POWERSTEP™**, **BEDSTEP™**, **BEDSTEP2™**, **BEDXTENDER HD™** or **ALLOY FUEL DOORS** are meticulously designed, engineered and manufactured in the USA and backed by AMP's no-nonsense, industry-leading warranty. All to ensure that everything, from function and appearance to reliability and durability, truly measures up.



Innovation In Motion™
from Lund International™



AMP RESEARCH PowerStep™

AMP RESEARCH POWERSTEP FROM LUND INTERNATIONAL. Slip-resistant and fully-illuminated running boards for pickups, SUVs and Jeep®. Automatically extends when the doors open, hides away when they close for integrated style and improved aerodynamics. High-strength aluminum construction with a 600 lb load rating on each side. Corrosion-resistant, military-spec finish for reliable, all-weather performance. Backed by a 5-year/60,000-mile limited warranty.



CONSTRUCTION

TWIN INTERNAL RIBS FOR MAXIMUM STIFFNESS

HIGH-STRENGTH, DIE-CAST ALUMINUM ALLOY COMPONENTS

HEAVY-DUTY CONSTRUCTION SUPPORTS LOADS UP TO 600 LBS

LOW-PROFILE, INTEGRATED LED LIGHTING SYSTEM - STANDARD

OPTIONAL STAINLESS-STEEL TRIM ADDS A BRIGHT ACCENT - SHOWN

5-YEAR/60,000-MILE WARRANTY

MADE IN USA



ONE EASY STEP PowerStep extends out and down making it easy for everyone to enter or exit the truck cab from any door.



HEAVY-DUTY weather-sealed motors and drive system with pinch-proof safety technology deliver year-round dependability.



HIGH-TRACTION textured powder-coat finish provides maximum grip and rugged durability in all weather conditions.

POWERSTEP™ RUNNING BOARDS

CHEVY / GMC		
2014	Silverado/Sierra Crew/Double Cab 1500	75154-01A
07-13	Silverado/Sierra Crew/Extended Cab 1500	75126-01A
11-14	Silverado/Sierra Crew Cab 2500/3500 HD (DIESEL) Diesel engine only	75146-01A
07-10	Silverado/Sierra Crew/Extended Cab 2500/3500 HD (DIESEL) Diesel engine	75126-01A
07-14	Silverado/Sierra Crew/Extended Cab 2500/3500 HD (GAS) Gas engine	75126-01A
99-06	Silverado/Sierra Extended Cab/Crew Cab (All Models) (Plus '07 Classic)	(1) 75113-01A
00-06	Tahoe/Yukon	(1) 75115-01A
07-14	Tahoe/Yukon	75125-01A
00-06	Suburban/Yukon XL	(1) 75115-01A
07-14	Suburban/Yukon XL	75125-01A
00-06	Avalanche (With and without Cladding)	(1) 75115-01A
07-13	Avalanche	75125-01A
02-06	Cadillac Escalade	(1) 75115-01A
07-14	Cadillac Escalade	75125-01A
02-06	Cadillac Escalade EXT/ESV	(1) 75115-01A
07-14	Cadillac Escalade EXT/ESV	75125-01A
03-09	HUMMER® H2/H2 SUT	75107-01A
05-10	HUMMER® H3/H3T	75116-01A
Note: (1) Additional diodes required for 99-02 GM vehicles. Contact your distributor to order or call AMP Research Customer Service 1-888-983-24.		
FORD		
09-14	F-150 Regular Cab/SuperCab/SuperCrew Includes Raptor	75141-01A
04-08	F-150 SuperCab/SuperCrew/Lincoln Mark LT	75105-01A
01-03	F-150 SuperCrew	75111-01A
02-03/08-14	Super Duty F-250/F-350/F-450 Regular Cab/SuperCab/CrewCab	75134-01A
99-01/04-07	Super Duty F-250/F-350/F-450 Regular Cab/SuperCab/CrewCab	(2) 75104-01A
00-01/04-05	Excursion	(2) 75104-01A
02-03	Excursion	(2) 75134-01A
Note: (2) Additional diodes required for Ford Super Duty 99-01 plus 04-07 Super Duty without remote keyless. Contact your distributor to order or call AMP Research Customer Service 1-888-983-24.		
JEEP		
07-14	Wrangler (JK) 2-Door	75121-01A
07-14	Wrangler (JK) 4-Door	75122-01A
NISSAN		
04-13	Titan Crew Cab/King Cab	75110-01A
04-13	Armada	75110-01A
04-10	Infiniti QX56	75110-01A
RAM		
09-14	1500 Regular Cab/Quad Cab/Crew Cab	75138-01A
02-08	1500 Quad Cab	75101-01A
03-09	2500/3500 Quad Cab	75101-01A
10-14	2500/3500 Regular Cab/Crew Cab/Mega Cab Excludes Chassis Cab	75138-01A
06-09	1500/2500/3500 Mega Cab	75118-01A
TOYOTA		
07-14	Tundra CrewMax/Double Cab/Sequoia	75137-01A
05-14	Tacoma Double Cab/Access Cab	75142-01A
EXTRAS & OPTIONS		
Extension Arm Kit (set of 4)	Compatible only with 75101-01A; 75104-01A; 75118-01A; 75134-01A	75130-01A
Stainless-Steel Trim Strips 79" (set of 2)	Fits all models except Hummer, Jeep and Toyota Tacoma Requires new-style step extrusion	75149-01A
Stainless-Steel Trim Strips 85" (set of 2)	Fits only 11-13/GMC HD Diesel Crew Cab Requires new-style step extrusion	75150-01A
Complete Upgrade Trim Kit	Includes (2), 79-inch new-style running board extrusions, (2) trim strips, and (4) end caps	75151-01A
Diode Kit	Includes (4) single diodes per kit Required for some applications	10-02727-90

AMP RESEARCH BedStep®

BEDSTEP® BUMPER STEP gives you a leg up right where you need it most. The high-traction step pad easily flips down with a simple nudge of your foot providing a safer way to get up into the truck bed. Installation is a quick 10-minute-no-drill task. Works with the tailgate open or closed and even when you're towing.



CONSTRUCTION

ENGINEERED TO SUPPORT LOADS UP TO 300 LBS

HIGH-STRENGTH, DIE-CAST ALUMINUM ALLOY COMPONENTS

BLACK-ANODIZED AND TEFLON®-COATED TO RESIST CORROSION

PRECISION STAINLESS-STEEL PIVOT PINS WITH MAINTENANCE-FREE SELF-LUBRICATING BUSHINGS FOR ROCK-SOLID STABILITY

HIGH-TRACTION, ALL-WEATHER, COMPOSITE STEP PAD-BIG ENOUGH FOR TWO LARGE BOOTS

GIVES EASY ACCESS TO THE TRUCK BED-TAILGATE OPEN OR CLOSED

3-YEAR/36,000-MILE LIMITED WARRANTY



BEDSTEP® BUMPER STEP



CHEVY SILVERADO 2500 HD



FORD SUPER DUTY



FLIP DOWN. STEP UP. Bolts-up to the frame on the driver-side using the factory bumper mounting points. BedStep provides an easy step up into the truck bed – even with the tailgate open or closed.



JEEP WRANGLER (JK)

BEDSTEP TRAILSERIES steps for Jeep Wrangler JK makes it easier to access your soft-top or roof-top cargo rack. Compatible with the Jeep factory bumper as well as most aftermarket bumpers.

CHEVY / GMC

99-06	Silverado/Sierra (Plus '07 Classic)	Classic – Excludes Stepside	75301-01A
07-13	Silverado/ Sierra 1500	Except 07 Classic	75300-01A
2014	Silverado/Sierra 1500		75314-01A
07-10	Silverado/Sierra 2500/3500 HD	Except 07 Classic	75300-01A
11-14	Silverado/Sierra 2500/3500 HD		75308-01A

FORD

06-14	F-150 Includes Raptor	Not compatible with some '04-'05 models – Excludes Flareside	75302-01A
99-14	Super Duty F-250/F-350/F-450		75303-01A

JEEP

07-14	Wrangler (JK)	Compatible with factory bumper and most aftermarket bumpers	75311-01A
-------	---------------	-------------------------------------------------------------	-----------

RAM

02-08	1500		75304-01A
03-09	2500/3500		75304-01A
09-14	1500	Not compatible with dual exhaust	75306-01A
10-14	2500/3500		75306-01A
09-14	1500	Dual exhaust only	75310-01A

TOYOTA

05-13	Tundra		75305-01A
2014	Tundra		75309-01A
05-14	Tacoma		75307-01A

AMP RESEARCH BedStep²

BEDSTEP²™ BOX-SIDE STEP is the easier and safer way to access a toolbox or cargo—without a leap of faith. Mounts on either side of the truck box. Flips down, just behind the cab with just a nudge of your foot. The high-traction composit step pad is big enough for two large boots and supports up to 300 lbs.

CONSTRUCTION

HEAVY-DUTY CONSTRUCTION SUPPORTS LOADS UP TO 300 LBS

HIGH-STRENGTH, DIE-CAST ALUMINUM ALLOY COMPONENTS ARE BLACK-ANODIZED AND TEFLON[®]-COATED TO RESIST CORROSION

PRECISION STAINLESS-STEEL PIVOT PINS WITH MAINTENANCE-FREE SELF-LUBRICATING BUSHINGS FOR ROCK-SOLID STABILITY

MOUNTS ON EITHER SIDE OF THE TRUCK BED

3-YEAR/36,000-MILE LIMITED WARRANTY



BEDSTEP2™ BOX-SIDE STEP



CHEVY SILVERADO 2500 HD

LOCATION. LOCATION. LOCATION.

BEDSTEP2™ gives you a leg up right where you need it most. Mount it on either side of the truck bed, just behind the cab, to get easy access to tools, supplies or 5th-wheel hitch.



FORD SUPER DUTY



CHEVY / GMC

99-13	Silverado/ Sierra, 1500	75400-01A
99-14	Silverado/Sierra, 2500/3500/Dually*	75400-01A
99-06	Silverado/Sierra, 1500/2500/3500/Dually	<i>Superseded by 75400-01A</i>
2014	Silverado/Sierra, 1500	75407-01A

*Requires additional Dually Mounting Kit 75610-01A

FORD

09-14	F-150	<i>Includes Raptor</i>	75402-01A
99-14	Super Duty F-250/F-350/Dually		75403-01A
08-14	Super Duty F-450/F-550	<i>Excludes Chassis Cab</i>	75403-01A

RAM

02-08	1500	75404-01A
03-09	2500/3500/Dually	75404-01A
09-14	1500	75406-01A
10-13	2500/3500/MegaCab Dually	75406-01A
10-12	Crew Cab Dually*	75406-01A

*Ram Crew Cab Dually requires additional Dually Mounting Kit 75611-01A

TOYOTA

07-14	Tundra CrewMax	75405-01A
07-14	Tundra Double Cab/Regular Cab	75409-01A

AMP RESEARCH BedXtender HD™

Open the tailgate and flip BEDXTENDER HD™ out to secure big loads. Flip it inside to contain smaller cargo. High-strength rounded-rectangle aluminum tubes combine with clam-shell design composite uprights to create a rugged, torque-resistant cargo cage. Available in a durable Silver or Black powder-coat finish.



BEDXTENDER HD™ MAX

The classic U-shape design provides the maximum cargo capacity. Open the tailgate and flip it out to gain 2-extra feet of enclosed cargo area. Flip it forward and close the tailgate to keep tools and smaller cargo contained.



BEDXTENDER HD™ MAX, MOTO, SPORT

CONSTRUCTION

HIGH-STRENGTH ALUMINUM TUBES

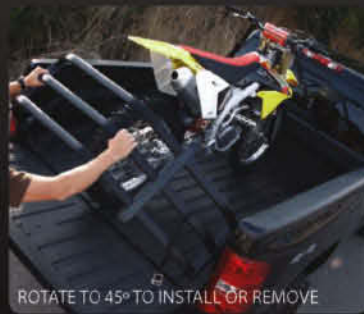
RUGGED CLAM-SHELL DESIGN COMPOSITE UPRIGHTS

3-YEAR/36,000-MILE LIMITED WARRANTY

AVAILABLE IN SILVER OR BLACK POWDER-COAT FINISH

BEDXTENDER HD™ SPORT

The unique V-shape design is the perfect mix of form and function for a wide range of truck models. Compatible with most tonneau covers when used as a bed divider.



ROTATE TO 45° TO INSTALL OR REMOVE



QUICK-CONNECT MOUNT HARDWARE



TOYOTA TACOMA



BEDXTENDER HD™ MOTO

This patented slant-back design gives compact short-bed pickups like Toyota Tacoma, the extra enclosed bed length needed to secure motorcycles, bikes or any other extra long cargo with the tailgate open.



BEDXTENDER HD™ SPORT

		GM	LARGE	DEEP	SMALL	NARROW
SILVER		74805-00A	74804-00A	74803-00A	74801-00A	74802-00A
BLACK		74805-01A	74804-01A	74803-01A	74801-01A	74802-01A
CHEVY / GMC						
04-12	Colorado/Canyon - Standard bed					●
07-14	Silverado/Sierra-Standard bed	●				
up to 07	Classic Silverado/Sierra-Stepside bed					●
up to 07	Classic Silverado/Sierra-Standard bed		●			
96-04	S10-Stepside bed <i>Requires L-Bracket Kit 74601-01A</i>					●
96-04	S10-Standard bed <i>Requires L-Bracket Kit 74601-01A</i>				●	
88-00	C/K Pickup-Stepside bed					●
88-00	C/K Pickup-Standard bed		●			
FORD						
97-09	F-150-Flareside bed					●
04-14	F-150-Standard bed			● ¹		
06-08	Lincoln Mark LT-Standard bed			●		
97-04	F-150-Standard bed '04 Heritage Edition / Excludes Super Crew		●			
08-14	F-250/F-350 Super Duty-Standard bed		● ¹			
99-07	F-250/F-350 Super Duty-Standard bed		●			
82-12	Ranger-Standard bed					●
Note: (1) Excludes models equipped with Ford integrated tailgate step						
NISSAN						
98-13	Frontier-Standard bed <i>Requires L-Bracket Kit 74601-01A</i>				●	
04-13	Titan-Standard bed		●			
all earlier models	Pickup-Standard bed <i>Requires L-Bracket Kit 74601-01A</i>				●	
RAM / DODGE						
87-11	Dakota-Standard bed					●
All model years	Ram-Stepside bed					●
82-14*	Ram-Standard bed <i>13-14* Require Dually Kit 74610-01A</i>		●			
TOYOTA						
07-14	Tundra			●		
00-06	Tundra				●	
00-06	Tundra D-Cab		●			
05-14	Tacoma				●	
95-04	Tacoma <i>Requires L-Bracket Kit 74601-01A</i>				●	
93-98	T-100 Pickup-Standard bed <i>Requires L-Bracket Kit 74601-01A</i>				●	
84-94	Pickup-Standard bed <i>Requires L-Bracket Kit 74601-01A</i>					●
EXTRAS & OPTIONS						
No-Drill Bracket Kit	<i>Option for 04-13 Ford F-150 and 08-13 Super Duty</i>	74602-01A	●	●		
Quick-Latch™ Mounting Bracket Kit	<i>Required for use with tonneau or shell</i>	74605-01A	●	●	●	●
Spacer Kit	<i>May be required for clearance on some tonneau cover bed rails</i>	74609-01A	●	●	●	●
2013- up Long bed Dually Bracket Kit	<i>Required for 13 and up RAM</i>	74610-01A	●			



BEDXTENDER HD SPORT

BEDXTENDER HD MAX

BEDXTENDER HD™ MAX

		GM	LARGE	DEEP	SMALL	
		SILVER	74815-00A	74814-00A	74813-00A	74811-00A
		BLACK	74815-01A	74814-01A	74813-01A	74811-01A
CHEVY / GMC						
07-14	Silverado/Sierra-Standard bed	●				
FORD						
04-14	F-150-Standard bed <i>Includes Raptor</i>			●		
06-08	Lincoln Mark LT-Standard bed			●		
97-04	F-150-Standard bed <i>Excludes Super Crew</i>		●			
99-14	F-250/F-350 Super Duty-Standard bed		●			
NISSAN						
98-13	Frontier-Standard bed <i>Requires L-Bracket Kit 74601-01A</i>				●	
04-13	Titan-Standard bed		●			
RAM / DODGE						
82-14	Ram-Standard bed <i>13-14' Require Dually Kit 74610-01A</i>		●			
TOYOTA						
07-14	Tundra			●		
00-06	Tundra D-Cab				●	
05-14	Tacoma				●	
EXTRAS & OPTIONS						
No-Drill Bracket Kit	<i>Option for 04-13 Ford F-150 & 08-13 Super Duty</i>	74602-01A	●	●		
Quick-Latch™ Mounting Bracket Kit	<i>Required for use with tonneau or shell</i>	74605-01A	●	●	●	
Spacer Kit	<i>May be required for clearance on some tonneau cover bed rails</i>	74609-01A	●	●	●	
2013-up Long bed Dually Bracket Kit	<i>Required for 13' and up RAM</i>	74610-01A	●			

BEDXTENDER HD™ MOTO

		SILVER	BLACK
04-12	Colorado/Canyon - Standard bed	74809-00A	74809-01A
96-04	S10-Stepside bed <i>Requires L-Bracket Kit 74601-01A</i>	74809-00A	74809-01A
RAM / DODGE			
87-11	Dakota-Standard bed	74809-00A	74809-01A
NISSAN			
98-13	Frontier-Standard bed <i>Requires L-Bracket Kit 74601-01A</i>	74809-00A	74809-01A
all earlier models	Pickup-Standard bed <i>Requires L-Bracket Kit 74601-01A</i>	74809-00A	74809-01A
TOYOTA			
00-06	Tundra	74809-00A	74809-01A
05-14	Tacoma	74809-00A	74809-01A
95-04	Tacoma <i>Requires L-Bracket Kit 74601-01A</i>	74809-00A	74809-01A
93-98	T-100 Pickup-Standard bed <i>Requires L-Bracket Kit 74601-01A</i>	74809-00A	74809-01A
EXTRAS & OPTIONS			
Quick-Latch™ Mounting Bracket Kit	<i>Required for use with tonneau or shell</i>		74605-01A
Spacer Kit	<i>May be required to provide clearance for some tonneau cover bed rails</i>		74609-01A



BEDXTENDER HD MOTO





Innovation In Motion™
from Lund International™

CUSTOMER SERVICE & TECHNICAL SUPPORT

1-888-983-2204

MONDAY-FRIDAY, 6:00 AM-5:00 PM PACIFIC

CUSTOMERSERVICE@AMP-RESEARCH.COM

15651 MOSHER AVENUE, TUSTIN, CA 92780

AMP-RESEARCH.COM



INVENTED, ENGINEERED AND BUILT IN AMERICA EXCLUSIVELY BY AMP RESEARCH. MAY BE COVERED BY ONE OF THE FOLLOWING PATENTS:
POWERSTEP™ 6,641,158; 6,830,257; 6,834,875; 6,938,909; 7,055,839; 7,380,807; 7,398,985; 7,584,975 **BEDSTEP®** 6,641,158; 6,830,257; 6,938,909;
7,055,839; 7,380,807; 7,398,985; 7,584,975; 7,740,261; 8,157,277 **BEDSTEP2™** 6,641,158; 6,830,257; 6,938,909; 7,055,839; 7,380,807; 7,398,985;
7,584,975 **BEDXTENDER HD™** 5,700,047; 6,113,173; 6,402,215; 6,805,392; 7,063,366; 7,393,035; 7,654,598; 7,681,935; 7,841,638



AUTHORIZED DEALER