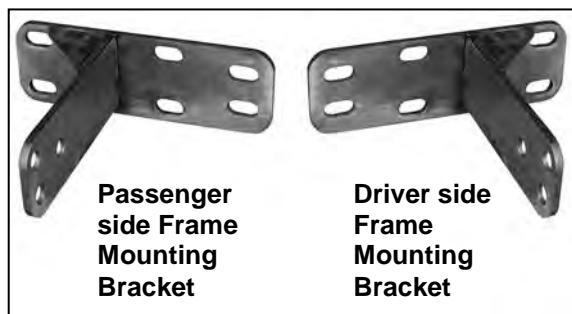




PART#R102565 R102564

PARTS LIST:

Qty	Description	Qty	Description
1	Grille Guard	6	12-1.75mm Nylon Lock Nuts
1	Driver/Left Frame Mounting Bracket	8	10-1.5mm x 40mm Hex Bolts (Gr 10.9)
1	Passenger/Right Frame Mounting Bracket	16	10mm x 24mm OD x 2.2mm Flat Washers
6	12-1.75mm x 35mm Hex Bolts	8	10mm Nylon Lock Nuts
12	12mm x 24mm OD x 2.5mm Flat Washers		



Complete Installation

PROCEDURE:

1. REMOVE CONTENTS FROM BOX. VERIFY ALL PARTS ARE PRESENT. READ INSTRUCTIONS CAREFULLY BEFORE STARTING INSTALLATION. ASSISTANCE IS RECOMMENDED. FACTORY TOW HOOKS (IF EQUIPPED) CANNOT BE RE-INSTALLED WITH THIS GRILLE GUARD. CUTTING MAY BE REQUIRED.
2. Remove the tow hooks, (25-3500, **Figure 4**), or tow hook and bracket, (1500), if equipped. On models without tow hooks, remove the plastic insert in the center of the bumper below the grill, (**Figure 1**). **NOTE:** From behind the bumper, push the plastic center pin down to release the 2-piece clips. Do not pry up on the head of the clip. Take care to avoid damage to the clips and/or plastic cover.
3. Determine the correct step for your application:

On 1500 Models:

Select the driver side Frame Mounting Bracket, (**Figure 2**). Line up the mounting holes in the Bracket with the (3) mounting holes on the mounting plate on the end of the frame behind the bumper, (**Figure 3A**). Bolt the Bracket to the frame with (3) 10mm x 40mm Hex Bolts, (6) 10mm Flat Washers and (3) 10mm Nylon Lock Nuts, (**Figure 3B**). **NOTE:** Access the back of the mounting location from behind the bumper bracket. **NOTE:** Factory tow hook hardware may also be re-used with the included 10mm Flat Washers installed between Bracket and hex bolt, (**Figure 3B**). Do not tighten hardware.

On 25-3500 Models:

Select the driver side Frame Bracket, (**Figure 5**). Bolt the Bracket to the (4) holes in the end of the frame with the supplied (4) 10mm x 40mm Hex Bolts, (8) 10mm Flat Washers and (4) 10mm Nylon Lock Nuts, (**Figures 6A & 6B**). **NOTE:** Factory tow hook hardware may also be re-used with the included 10mm Flat Washers installed between Bracket and hex bolt, (**Figure 7**). Do not tighten hardware.
4. Repeat the correct previous Step to install the passenger side frame mounting Bracket.

EXCLUDES SPECIAL EDITION MODELS WITH ADDITIONAL LOWER BUMPER FASCIA
(GTX, HEMI SPORT, RUMBLE BEE, DAYTONA, ETC.)

5. With assistance, lift the Grille Guard up to the outside of the Frame Mounting Brackets. Bolt the Grille Guard to the Brackets with (6) 12mm x 35mm Hex Bolts, (12) 12mm Flat Washers and (6) 12mm Nylon Lock Nuts, **(Figure 7)**. **IMPORTANT:** Slowly close the hood to check for clearance and fit of the Grille Guard and Brackets. Adjust as necessary then snug but do not fully tighten all of the hardware.
6. Stand back from the vehicle and check to see that the Grille Guard is centered and level on the vehicle and adjust as necessary. **IMPORTANT:** Once properly aligned, fully tighten all hardware.
7. Do periodic inspections of the installation to make sure that all hardware is secure and tight.
8. **Optional:** If the vehicle was not equipped with tow hooks and you removed the plastic cover detailed in **Step 2**, it may be reinstalled once the Grille Guard is properly adjusted but will require cutting. Trim from each end until the cover fits between the Frame Mounting Brackets. Line up the mounting holes and secure the cover with the factory clips by pushing the outer socket into place then inserting the center pin.

To protect your investment, wax this product after installing. Regular waxing is recommended to add a protective layer over the finish. Do not use any type of polish or wax that may contain abrasives that could damage the finish.

For stainless steel: Aluminum polish may be used to polish small scratches and scuffs on the finish. Mild soap may be used also to clean the Grille Guard.

For gloss black finishes: Mild soap may be used to clean the Grille Guard

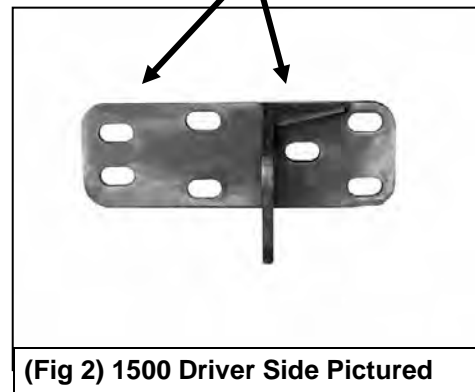
Ram 1500 Series Driver Side Installation Pictured

Remove plastic cover to
access mounting locations



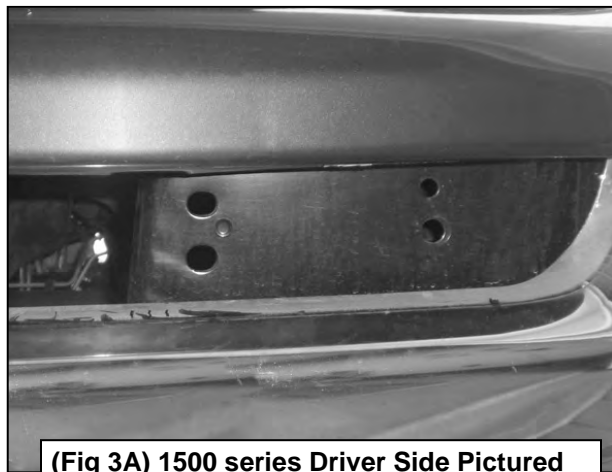
Fig 1

1500 mounting holes



(Fig 2) 1500 Driver Side Pictured

(3) 10mm x 40mm Hex Bolts
(6) 10mm Flat Washers
(3) 10mm Nylon Lock Nuts



(Fig 3A) 1500 series Driver Side Pictured

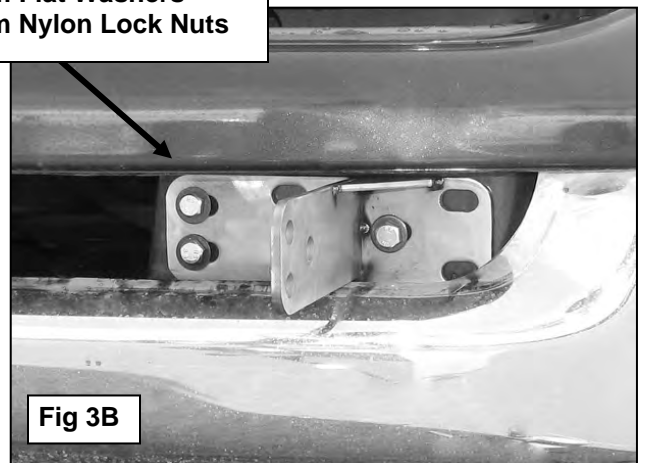
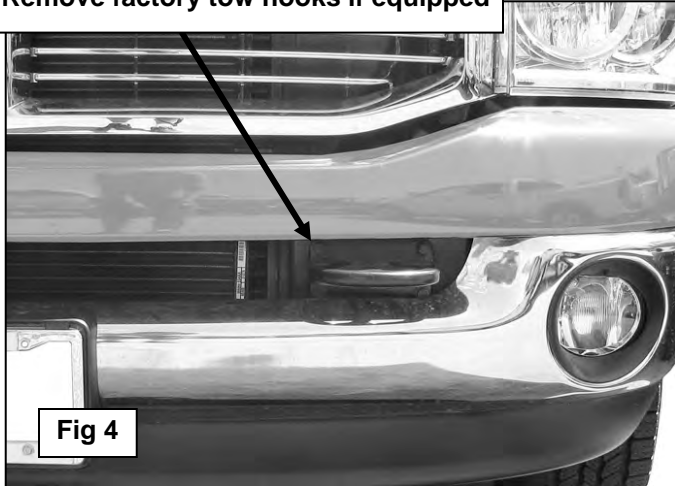


Fig 3B

Ram 25-3500 Series Driver Side Installation Pictured

Remove factory tow hooks if equipped

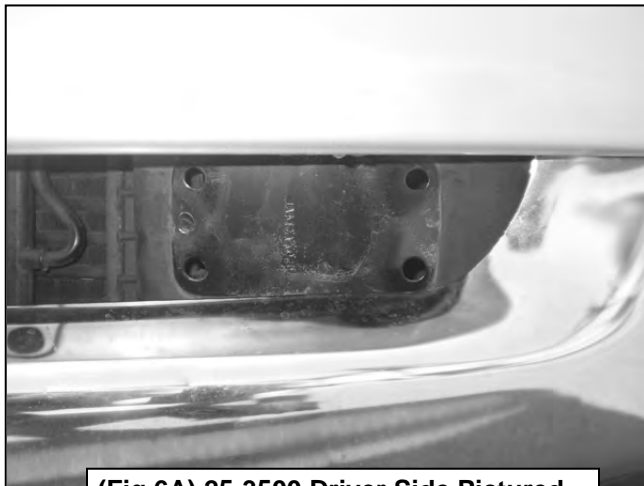


25-3500 mounting holes



(Fig 5) Driver Side 25-3500 Pictured

- (4) 10mm x 40mm Hex Bolts
- (8) 10mm Flat Washers
- (4) 10mm Nylon Lock Nuts



(Fig 6A) 25-3500 Driver Side Pictured

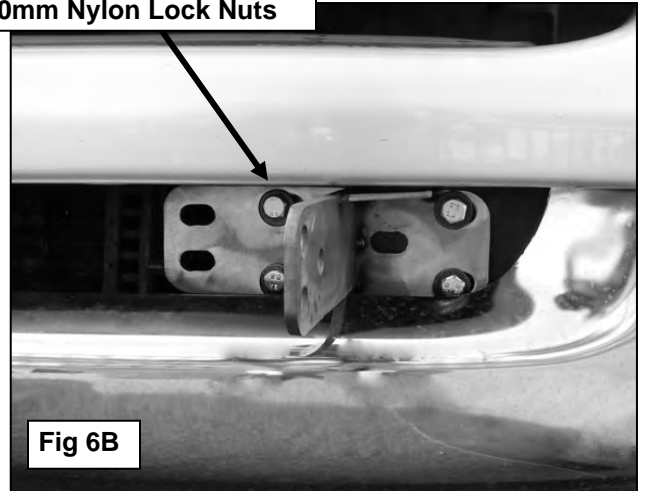


Fig 6B

- (3) 12mm x 35mm Hex Bolts
- (6) 12mm Flat Washers
- (3) 12mm Nylon Lock Nuts

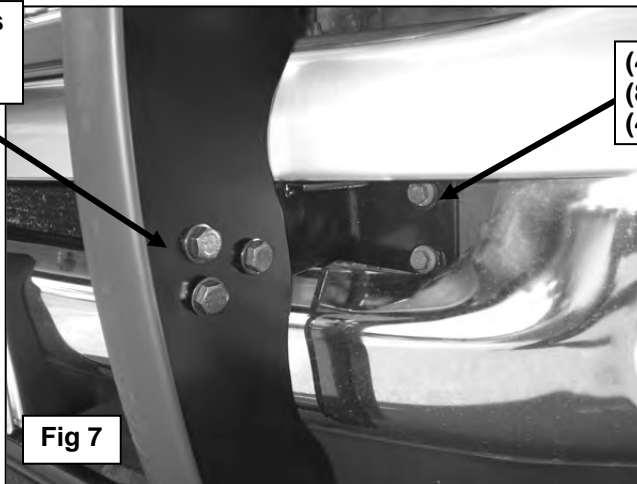


Fig 7

- (4) 10mm x 40mm Hex Bolts
- (8) 10mm Flat Washers
- (4) 10mm Nylon Lock Nuts