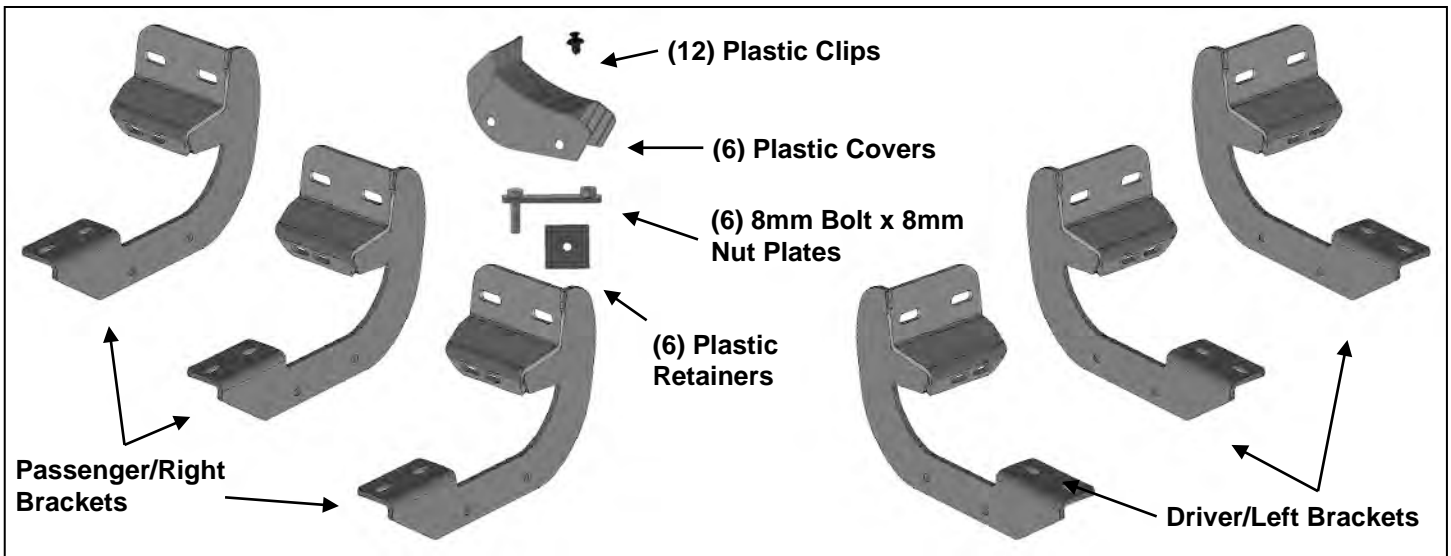




PART#R102582-B

PARTS LIST:

2	I-4 Running Boards	6	8mm Hex Nuts
3	Driver/left Mounting Brackets	12	6mm x 20mm T-Bolts
3	Passenger/right Mounting Brackets	12	6-1.0mm x 25mm Socket Head Bolts
6	Plastic Bracket Covers	12	6mm x 22mm x 2mm Large Flat Washers
12	Plastic Clips for Covers	24	6mm x 18mm x 1.6mm STD Flat Washers
6	8mm Nut/Bolt Plates	12	6mm Lock Washers
6	8mm Plastic Retainers	12	6mm Hex Nuts
12	8-1.25mm x 30 Hex Bolts	12	6mm Flange Nuts
12	8mm x 24mm x 2mm Flat Washers	1	Allen Key
12	8mm Lock Washers		



PROCEDURE:

1. REMOVE CONTENTS FROM BOX. VERIFY ALL PARTS ARE PRESENT. READ INSTRUCTIONS CAREFULLY BEFORE STARTING INSTALLATION. DRILLING MAY BE REQUIRED.
2. Starting at the driver side-front of the vehicle, remove the sealing tape covering the factory holes in the side of the inner panel, **(Figure 1)**.
3. Determine the correct procedure to attach the driver side front Bracket for your model/year:

Models without factory threaded inserts in body panel, (see Figure 1):

 - a. Select (1) 8mm Bolt/nut Plate, **(Figure 2)**. Partially thread an 8mm Hex Bolt into the threaded nut on the Nut Plate, **(Figure 3)**. Thread the Hex Bolt in until it is flush with the welded nut. Use the Hex Bolt as a handle and insert the Bolt and Nut Plate into the oval hole, **(Figure 4)**. Feed the threaded bolt on the Bolt Plate through one of the hex shaped factory holes.
 - b. Thread (1) 8mm Plastic Retainer onto the threaded end and down tight against the body panel, **(Figure 5)**. **NOTE:** The Plastic Retainer is designed to keep the Bolt/Nut Plate from falling into the body panel and to aid in Bracket installation.
 - c. Select the driver side front Mounting Bracket, **(Figure 6)**. Attach the Bracket to the threaded end of the Bolt Plate with (1) 8mm Flat Washer, (1) 8mm Lock Washer and (1) 8mm Hex Nut, **(Figure 7)**.
 - d. Remove the 8mm Hex Bolt from the nut on the Bolt Plate from **Step 3a**. Rotate the Bolt on the Bolt Plate until the threaded nut lines up with the remaining hole in the Mounting Bracket and hex hole in the body panel, **(Figure 7)**. Attach the Bracket to the threaded Nut Plate with (1) 8mm x 30mm Hex Bolt, (1) 8mm Lock Washer and (1) 8mm Flat Washer, **(Figure 7)**. Do not tighten hardware.

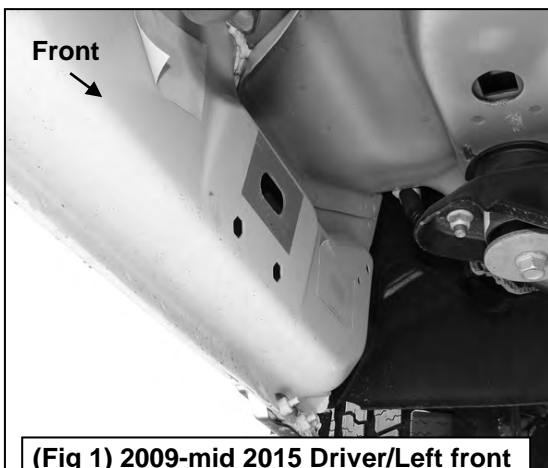
Models with factory threaded inserts, (see Figure 8):

 - a. Attach the driver side Front Bracket to the threaded inserts with (2) 8mm x 30mm Hex Bolts, (2) 8mm Lock Washers and (2) 8mm Flat Washers, **(Figures 8 & 9)**. Leave hardware loose.

4. Next, attach the Bracket to the back of the pinch weld with (2) 6mm x 25mm Socket Head Screws, (4) 6mm x 18mm STD Flat Washers and (2) 6mm Flange Nuts, **(Figures 10 & 11)**. Do not fully tighten hardware at this time. **IMPORTANT:** 2009-10 models are not equipped with factory holes and will require drilling through the pinch weld to attach the Bracket. Do not drill through pinch weld at this time, **(see Step 11)**.
5. Select (1) Plastic Bracket Cover and (2) Retaining Clips. Slide the Cover over the driver side front Bracket. Line up the (2) mounting holes in the Cover with the holes in the Bracket. Insert a Clip into each hole and push center pin to expand Clip, **(Figures 12 & 13)**. Repeat for all Cover installations.
6. Move along the side of the body panel to the center mounting location, **(Figure 14)**. Repeat the appropriate **Steps 2—5** to install the driver side center Bracket, **(Figure 19)**.
7. Move to the rear location, **(Figure 15)**. Repeat **Step 6** to install the rear Mounting Bracket, **(Figure 20)**.
8. Select (1) Running Board and (6) 6mm T-Bolts. Locate the opening in the end of each channel in the bottom of the Running Board. Slide (3) T-Bolts into each channel, **(Figure 16)**.
9. With assistance, carefully position the Running Board onto the (3) Mounting Brackets. Lift the Running Board up and slide the T-Bolts along the channels to line up with the Brackets. **IMPORTANT:** Do not slide the Running Board on the Brackets, (front to back or rotate), or the finish on the Running Board may be damaged.
10. Line up the front of the Running Board approximately 2" back, (or locate as desired), from the front wheel opening. Attach the Running Board to the Brackets with (6) 6mm x 22mm Large Flat Washers, (6) 6mm Lock Washers and (6) 6mm Hex Nuts, **(Figures 17—20)**. Do not tighten hardware at this time.
11. Properly level and adjust the Running Board and fully tighten all hardware.
2009-10 models requiring drilling to attach Brackets to pinch weld:
 - a. Level the Running Board to the vehicle. Make sure all (3) Brackets are tight against the bottom of the body panel and tighten all mounting hardware.
 - b. Mark the location of the slots onto the pinch weld.
 - c. Drill (2) 1/4" holes through the pinch weld for each Support Bracket. **IMPORTANT:** Do not drill too close to the bottom edge of the pinch weld. Drill the holes in the center of the marked slots.
 - d. Repeat **Step 4** to attach the Brackets to the drilled holes in the pinch weld. Check for level then fully tighten all hardware.
12. Move to the passenger side of the vehicle. Remove tape covering front, center and rear locations. Repeat **Steps 2—11** for passenger side Mounting Bracket installation.
13. Do periodic inspections to the installation to make sure that all hardware is secure and tight.

To protect your investment, wax this product after installing. Regular waxing is recommended to add a protective layer over the finish. Do not use any type of polish or wax that may contain abrasives that could damage the finish. Mild soap may be used to clean the Running Board.

Driver Side Installation Pictured

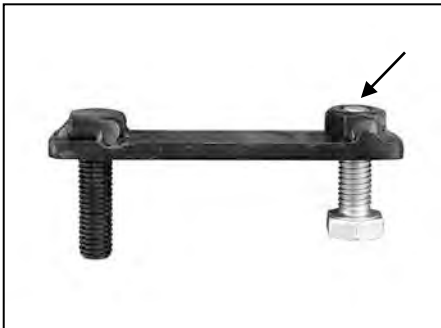


(Fig 1) 2009-mid 2015 Driver/Left front mounting location (No factory holes in pinch weld 2009-2011 models)

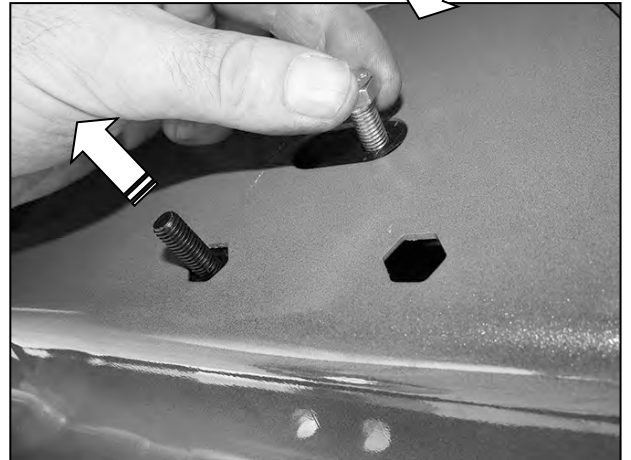


(Fig 2) 8mm Bolt-8mm Nut Plate, NOTE: 8mm Bolt-Nut Plate is not required on models with threaded inserts

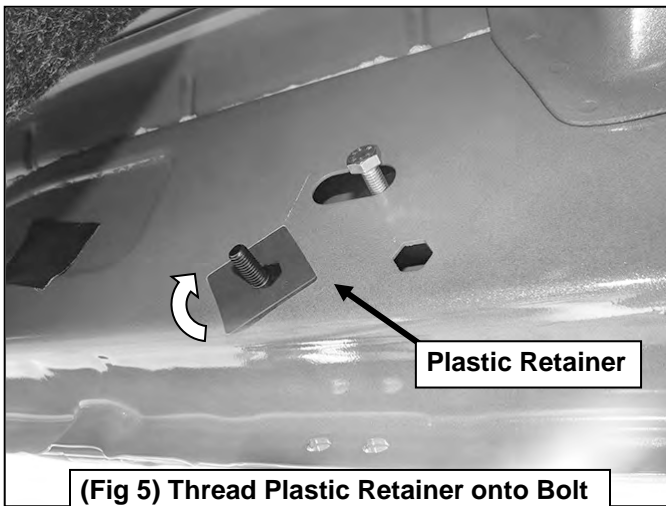
Driver Side Installation Pictured



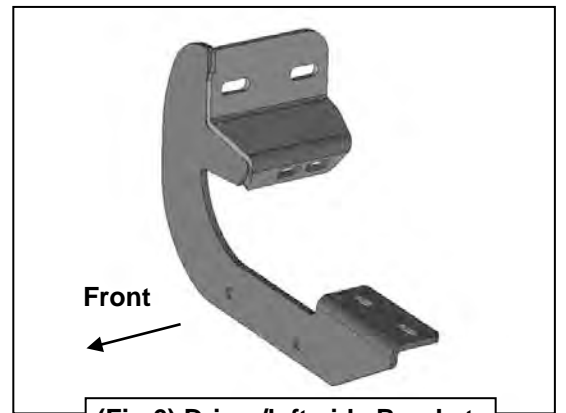
(Fig 3) Thread (1) 8mm Hex Bolt into the nut on the plate. Stop when bolt reaches end of nut as pictured



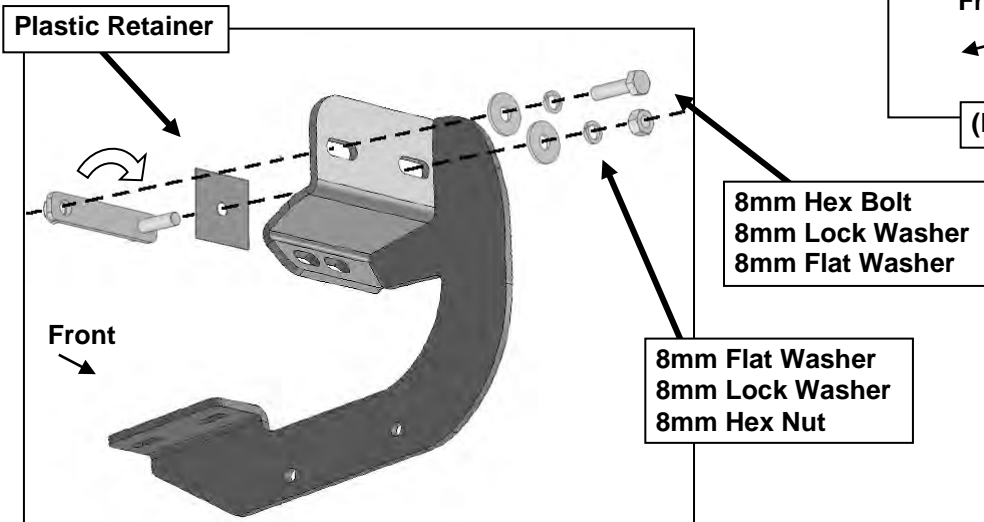
(Fig 4) Use the loose Hex Bolt as a handle. Insert the Bolt Plate into the oval hole and feed the threaded end out either factory hex shaped hole. **IMPORTANT:** Do not let go of the hex bolt until after Plastic Retainer has been threaded onto bolt (Fig 5)



(Fig 5) Thread Plastic Retainer onto Bolt Plate to hold Bolt Plate in position.

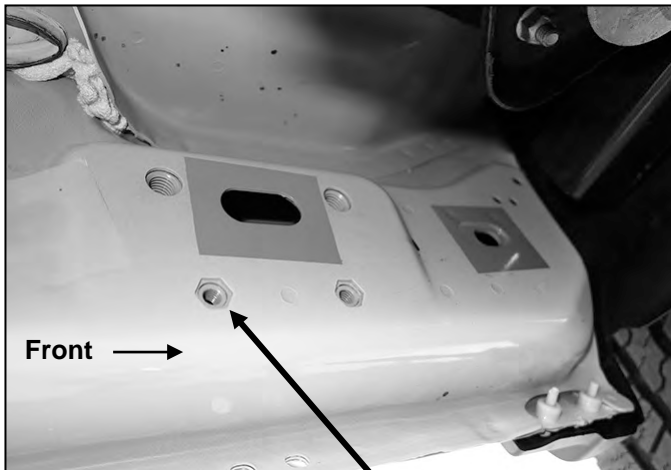


(Fig 6) Driver/left side Bracket



(Fig 7) Attach Bracket to threaded end of Bolt Plate first. Remove 8mm Hex Bolt (see Fig 3). Rotate Bolt Plate to line up with remaining factory hex shaped hole.

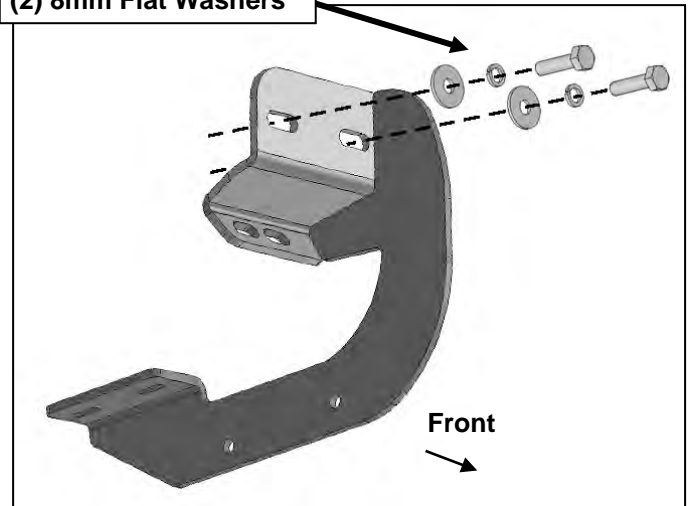
Driver Side Installation Pictured



(Fig 8) Driver side front mid 2015-on, an example of models with factory installed threaded inserts

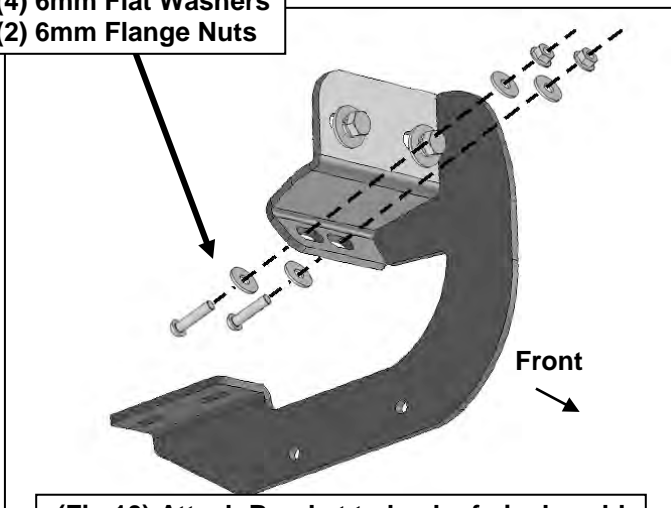
IMPORTANT: 2009-2010 models without holes in pinch weld will require drilling 1/4" holes through pinch weld to attach the bracket. Do complete installation of Running Boards first, level Running Board before drilling holes for bracket.

- (2) 8mm Hex Bolts
- (2) 8mm Lock Washers
- (2) 8mm Flat Washers

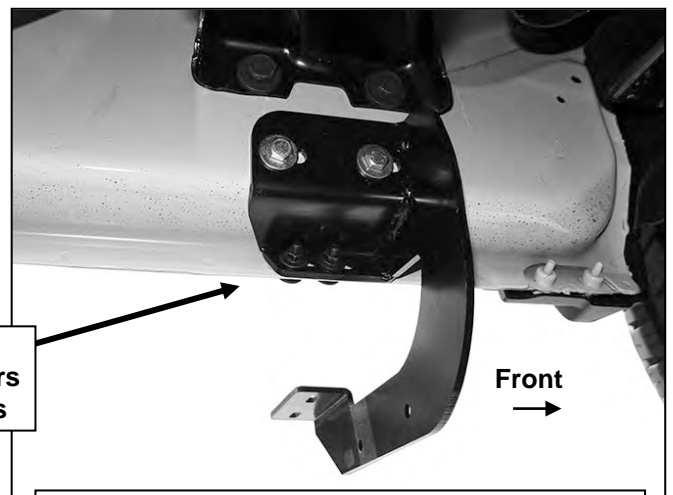


(Fig 9) Driver side front models with factory installed threaded inserts. Bolt Plate not required

- (2) 6mm Screws
- (4) 6mm Flat Washers
- (2) 6mm Flange Nuts

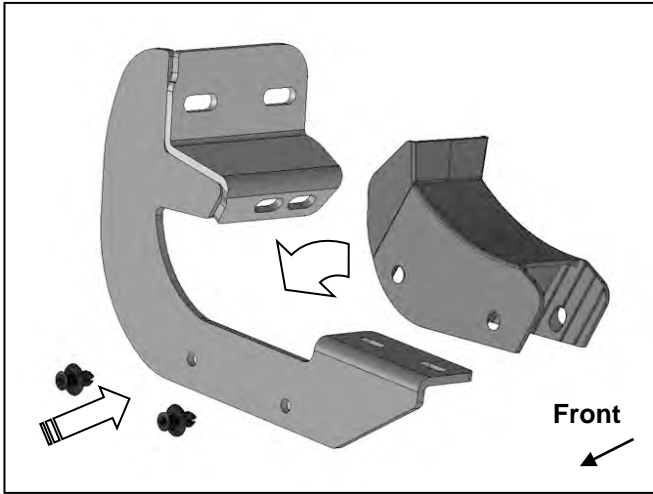


(Fig 10) Attach Bracket to back of pinch weld (models with factory holes in pinch weld only)



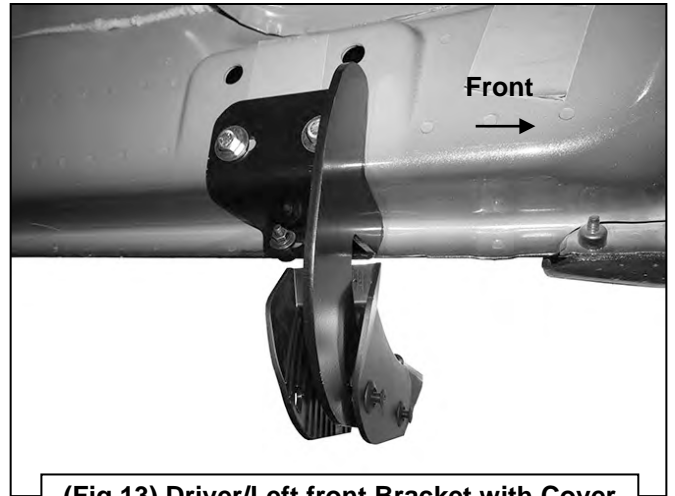
(Fig 11) Attach Bracket to back of pinch weld (models with factory holes in pinch weld only)

Driver Side Installation Pictured

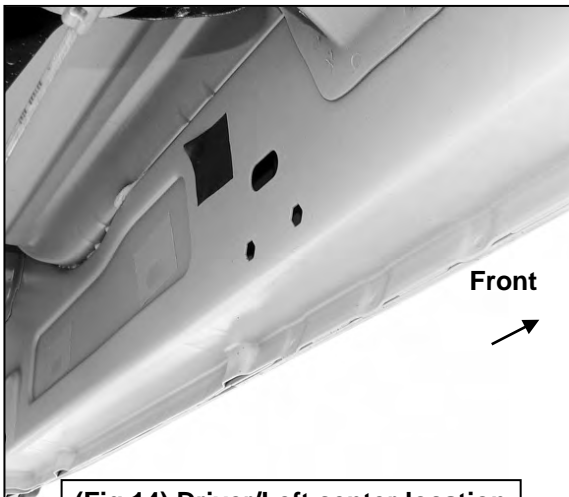


(Fig 12) Slide Cover over top of Bracket. Attach Cover to Bracket with (2) Retaining Clips

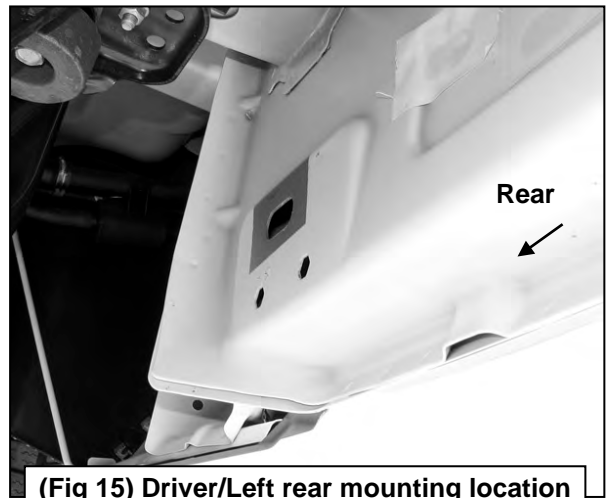
IMPORTANT: 2009-2010 models without holes in pinch weld will require drilling 1/4" holes through pinch weld to attach the bracket. Do complete installation of Running Boards first, level Running Board before drilling holes for bracket.



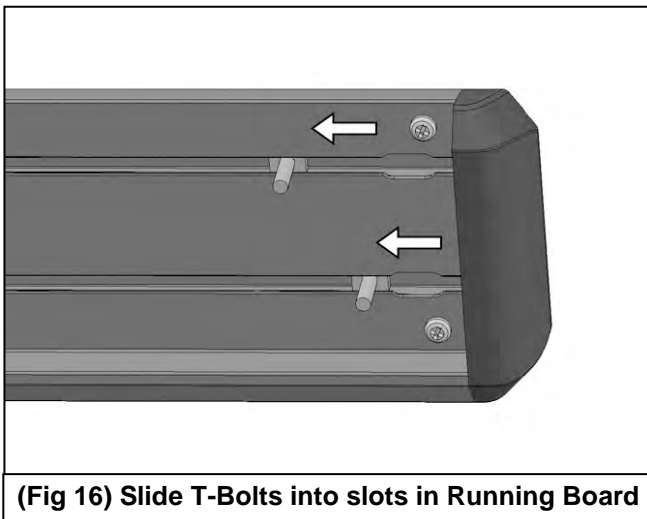
(Fig 13) Driver/Left front Bracket with Cover



(Fig 14) Driver/Left center location



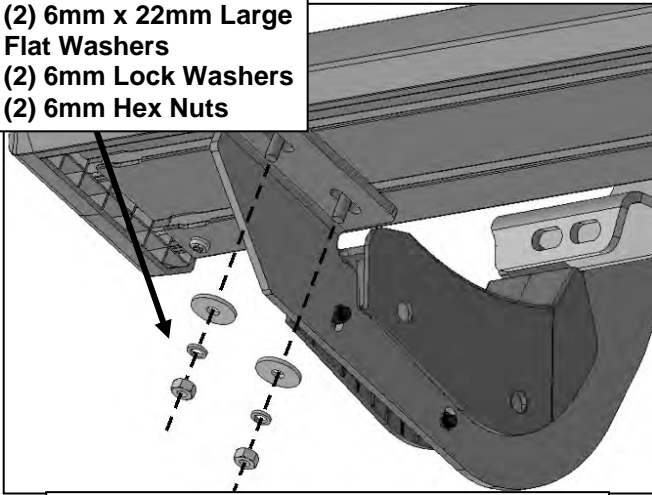
(Fig 15) Driver/Left rear mounting location



(Fig 16) Slide T-Bolts into slots in Running Board

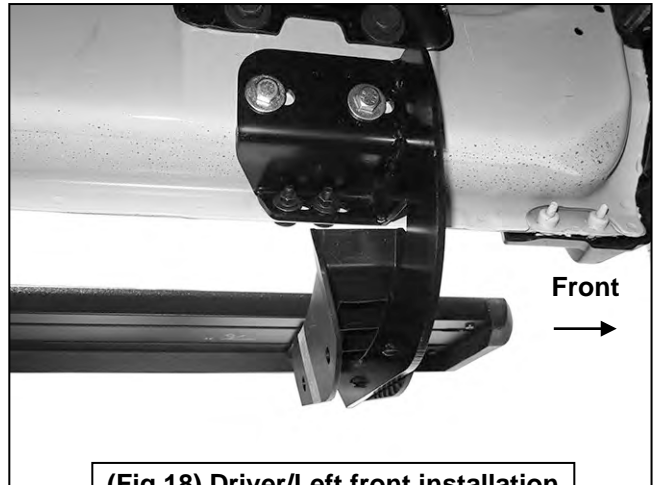
Driver Side Installation Pictured

- (2) 6mm x 22mm Large Flat Washers
- (2) 6mm Lock Washers
- (2) 6mm Hex Nuts

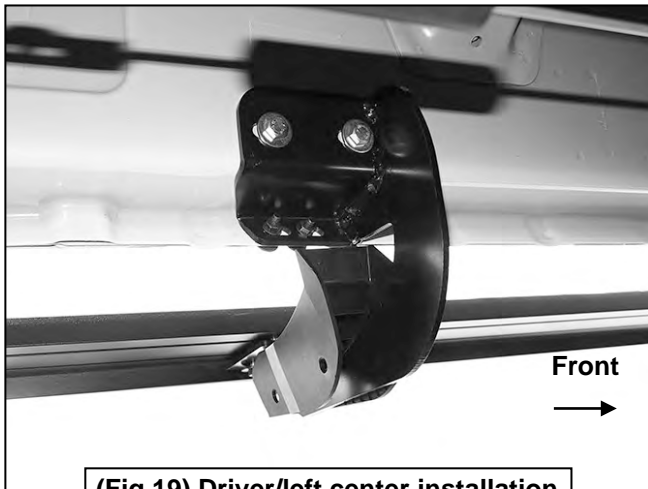


(Fig 17) Attach Running Board to Brackets

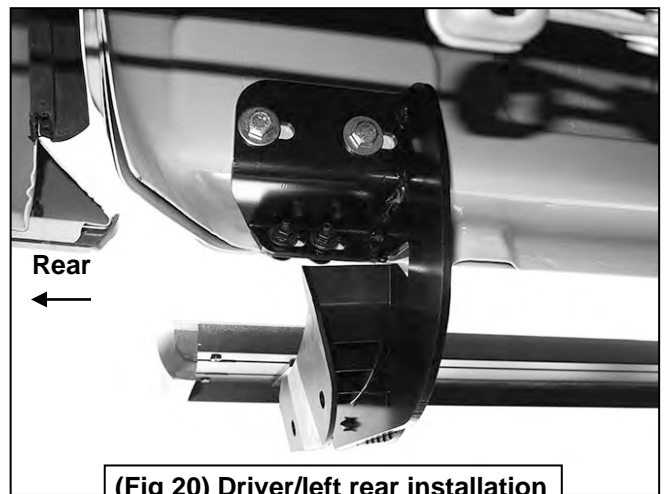
IMPORTANT: 2009-2010 models without holes in pinch weld will require drilling 1/4" holes through pinch weld to attach the bracket. Do complete installation of Running Boards first, level Running Board before drilling holes for bracket.



(Fig 18) Driver/Left front installation



(Fig 19) Driver/left center installation



(Fig 20) Driver/left rear installation



Installation Complete