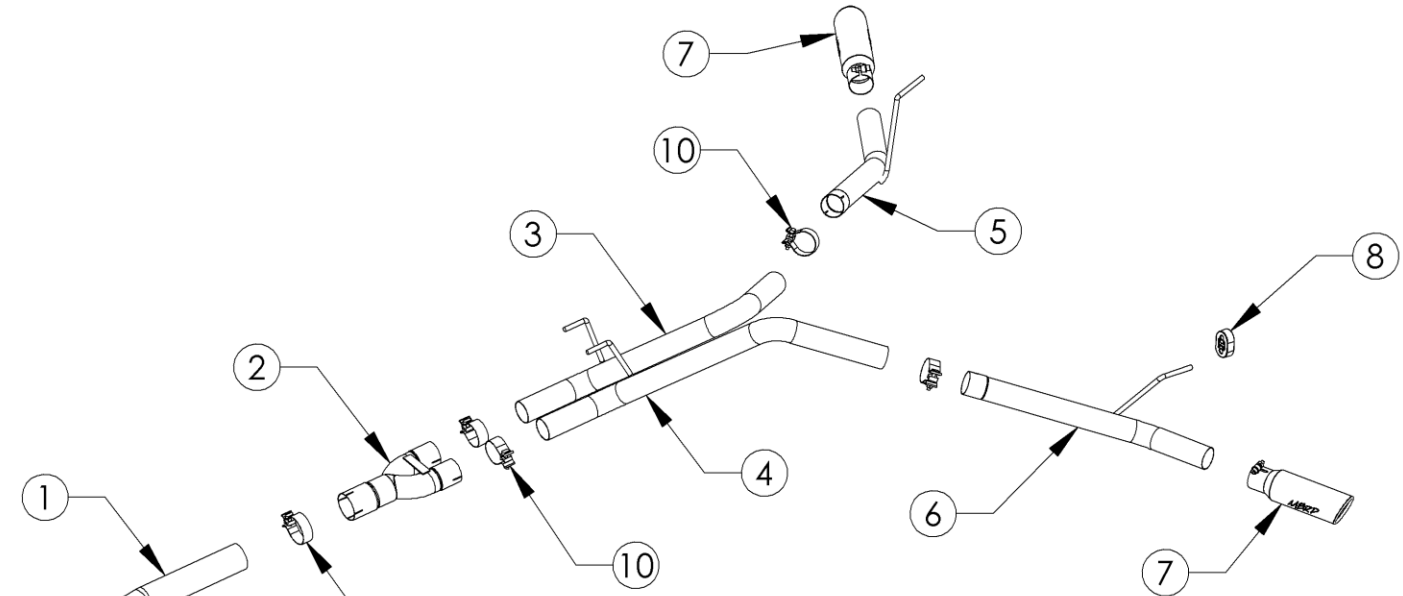


# S6170

2014-17 DODGE RAM 1500 3.0L ECODIESEL  
REG CAB 8' BOX, QUAD CAB 6'4" BOX,  
CREW CAB 5'7" & 6'4" BOX  
2.5" SIDE EXIT DUAL EXHAUST

**MBRP**  
INC.  
PERFORMANCE EXHAUST



1. EXTENSION PIPE
2. Y-PIPE
3. PASSENGER-SIDE OVER-AXLE PIPE
4. DRIVER-SIDE OVER-AXLE PIPE
5. PASSENGER-SIDE TAILPIPE
6. DRIVER-SIDE TAILPIPE
7. TIP (2 PCS)
8. 3" BAND CLAMP\* (2 PCS)
9. 2.5" CLAMP (4 PCS)
10. RUBBER ISOLATOR

\* SADDLE CLAMPS USED FOR S6170AL SYSTEM

## PLEASE READ BEFORE STARTING INSTALLATION

**While MBRP Inc. has made every effort to ensure that all components of this system are of superior quality and properly packaged, it is the installer's responsibility to ensure the following before removal of the factory exhaust:**

- that ALL components shown above are present.
- that ALL mating components fit together.
- that there are no damaged components.
- that the system you have purchased is appropriate for your vehicle year, model and configuration.
- that the system will not interfere with any modifications previously installed or planned.
- that you have read and understand these instructions.

If you have any questions or are uncertain about any aspect of the installation of this system to your vehicle please contact your dealer before commencing installation.

**2014-17 RAM 1500 3.0L ECODIESEL**

**Removal of Stock System:**



**Figure 1**



**Figure 2**



**Figure 3**



**Figure 4**



1. Apply some penetrating lubricant liberally to all exhaust fasteners, hangers and rubber insulators.
2. Loosen the nut on the band clamp located behind the particulate filter.
3. Remove the hangers from the rubber isolators on the vehicle and remove the stock muffler and tailpipe.

**Installation of MBRP Inc. Performance Exhaust:**

1. The **Extension Pipe** provided is pre-cut for the 149" wheelbase vehicle configurations. For 140" wheelbase vehicles, cut 9" off of the straight end of the **Extension Pipe**.
2. Slide the **3" Clamp** over the expanded end of the **Extension Pipe** and install it onto the end of the particulate filter exhaust pipe. Line up the **Extension Pipe** slot with the locator on the top of the stock pipe. Do not fully tighten the **3" Clamp** yet. **Refer to Figure 1**
3. Slide the other **3" Clamp** onto the other end of the **Extension Pipe**, and then install the **Y-Pipe**. Leave the clamp loose enough to allow the **Y-Pipe** to be adjusted.
4. Slide the **2 1/2" Clamps** over the other end of the **Y-Pipe** and insert the **Driver and Passenger-Side Over-Axle Pipes** into each outlet while also inserting the hangers into the OEM rubber isolators. Leave the clamps loose enough to allow for adjustment. **Refer to Figure 2**
5. Slide another **2 1/2" Clamp** onto the front end of the **Passenger-Side Tail Pipe** and then insert the pipe into the **Passenger-Side Over-Axle Pipe**, while also inserting the hanger into the OEM rubber isolator. Again, leave the clamp loose enough to allow for adjustment. **Refer to Figure 3**
6. Repeat Step 5 for the **Driver-Side Tailpipe**, using the supplied **Rubber Isolator** in the rear hanger location. **Refer to Figure 4**
7. Install the **Exhaust Tips** at the desired position.
8. Finally, align the exhaust as required. Starting at the front of the exhaust, tighten all clamps and connections.
9. Check along the length of the exhaust system to ensure that there is adequate clearance around the spare tire, fuel and brake lines, or any wiring. If any interference is detected, relocate or adjust as necessary.

**Congratulations!** You are ready to begin experiencing the improved power, sound and driving experience of your MBRP Inc. performance exhaust system. We hope you enjoy your purchase.