



**Tools required:**

- 1- 8mm nut driver
- 1- 10mm socket
- 1- ratchet
- 1- Allen wrenches
- 1- screwdriver

**Part number PF7056**

- 07-08 Cadillac Escalade, EXT 6.2L V8
- 07-08 Chevrolet Avalanche 5.3L V8
- 07-08 Chevrolet Silverado 4.8L, 5.3L V8
- 07-08 Chevrolet Suburban 5.3L V8
- 07-08 Chevrolet Tahoe 4.8L, 5.3L V8
- 07-08 GMC Sierra 1500 4.8L, 5.3L, 6.2L V8
- 07-08 GMC Yukon 4.8L, 5.3L V8
- 07-08 GMC Yukon Denali 6.2L V8
- 07-08 GMC Yukon XL 5.3L V8

- 1- MR Tech Power-Flow intake system
- 1- **Web/nano fiber dry filter** (#1022)
- 1- **Heat shield** (#11074)
- 1- 3 3/4" straight hose (#3036)
- 1- 4" hump hose (#3168)
- 3- Power-bands (.462) .064 (#4006)
- 2- Power-bands (.412) .056 (#4005)
- 1- 4" filter adaptor (#6045)
- 4- M6 button head screws (#6083)
- 1- Rubber trim @ 12" Long (#6058)
- 1- 3 7/8" x 4 3/8" molded step hose (#3149)
- 1- 11" - 10mm vacuum hose (#3077)
- 1- Power band (.512) .072 (#4014)

Note: The C.A.R.B. Exempt sticker must be attached under the hood in a manner such that it is easily viewed by an emissions inspector.

**Congratulations! You have just purchased the best engineered, dyno-proven Power-Flow air intake system available. Please check the contents of this box immediately.**

Report any defective or missing parts to the Authorized Injen Technology dealer you purchased this product from. Before installing any parts of this system, please read the instructions thoroughly. If you have any questions regarding installation please contact the dealer you purchased this product from. Installation DOES require some mechanical skills. A qualified mechanic is always recommended. \*Do not attempt to install the intake system while the engine is hot. The installation may require removal of radiator fluid line that may be hot. Injen Technology offers a limited lifetime warranty to the original purchaser against defects in materials and workmanship. Warranty claims must be handled through the dealer from which the item was purchased.

Injen Technology 244 Pioneer Place Pomona, CA 91768 USA

**Please check the contents of this box immediately.**

**Note: This intake system was Dyno-tested with an Injen filter and Injen parts. The use of any other filter or part will void the warranty and CARB exemption number. Parts and accessories are available on line at "Injenonline.com"**

Note: The installation of this cold air intake does require mechanical skills. Removal of the front bumper requires loosening and removing several plastic plugs and screws that may be difficult. It is recommended that this system be installed by a professional mechanic. Be sure to disconnect the negative terminal before proceeding.

**Congratulations! You have just purchased the worlds first tuned intake system.**

**POWER-FLOW: An air intake evolution MR Technology, Leading the way!**



Figure 1





Figure 2  
Pull the engine cover off the intake manifold.

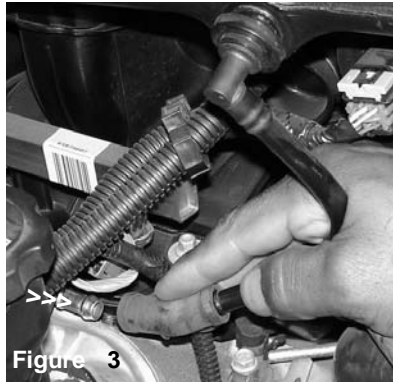


Figure 3  
Unplug the hard vacuum line connected to the air intake resonator box.



Figure 4  
Loosen the throttle body clamp located on the air intake duct (A). Loosen the second clamp that connects the air intake duct to the mass air flow sensor (B).



Figure 5  
Once both clamps have been loosened at the throttle body and the mass air flow sensor, continue to remove the plastic air intake duct.

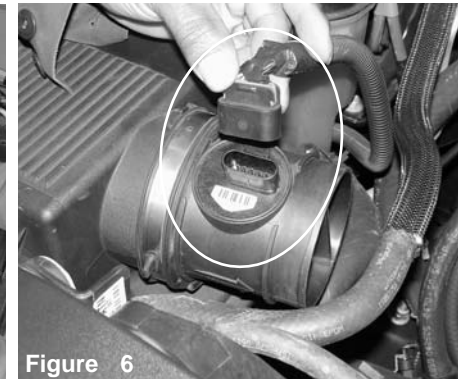


Figure 6  
depress clip on the electrical harness connector and remove harness from the mass air flow sensor.

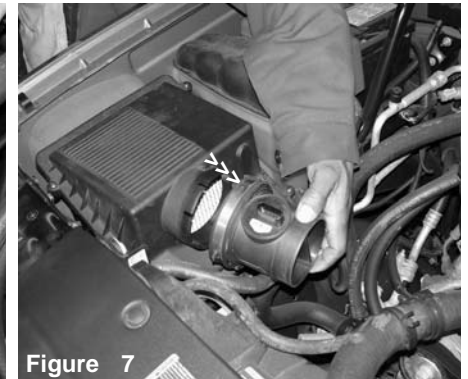


Figure 7  
Loosen clamp that connects the mass air flow sensor to the air box cleaner. Remove the mass air flow sensor from the air box cleaner.



Figure 8  
Pull the entire air box cleaner for the engine compartment.

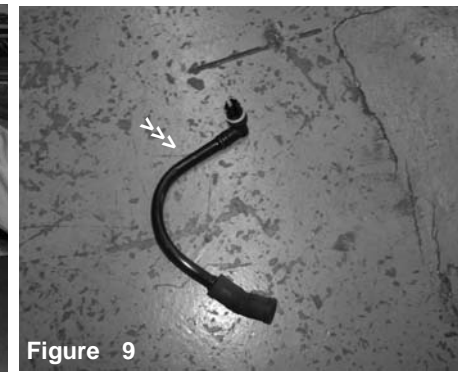


Figure 9  
Remove the factory crank case line from the vehicle.



Figure 10  
Press the urethane step hose over the throttle body until it butts up against the rim. Once you have adjusted the step hose, continue to tighten the power-band located over the throttle body side.

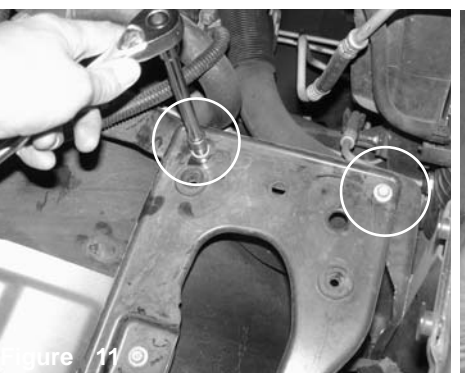


Figure 11  
Loosen the 2 bolts holding in the air box tray close to the engine. Save the 2 bolts which will be re-installed for the injen heat shield.



Figure 12  
Press the 4" hump hose over the outlet side of the mass air flow sensor. Use two clamps and tighten the clamp on the mass air flow sensor. Note: The sensor is directional. Follow arrow.



Figure 13  
Press the 3-3/4" straight hose over the inlet side of the mass air flow sensor. Use two clamps and tighten the clamp on the mass air sensor. **Make sure the MAF is going in the correct direction.**

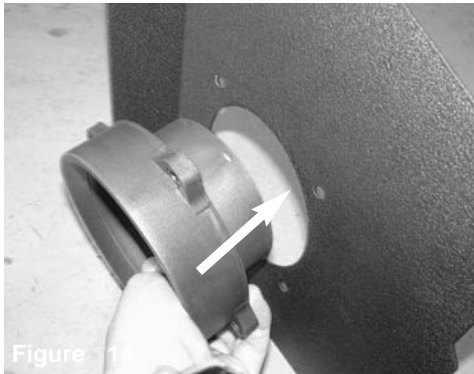


Figure 14

Install the adaptor to the heat shield.

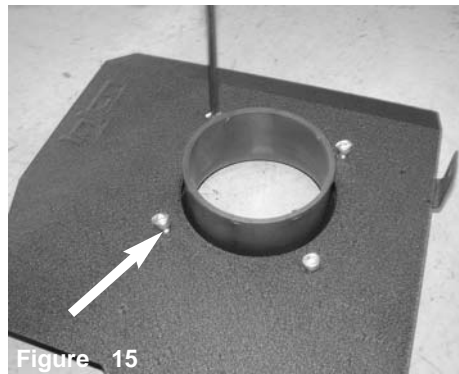


Figure 15

Secure the adaptor using provided M6 button head screws, Tighten using 6mm allen key.



Figure 16

Attach the trim seal to the top of the heat shield.



Figure 17

Install the filter to the adaptor and tighten using 8mm nut driver.

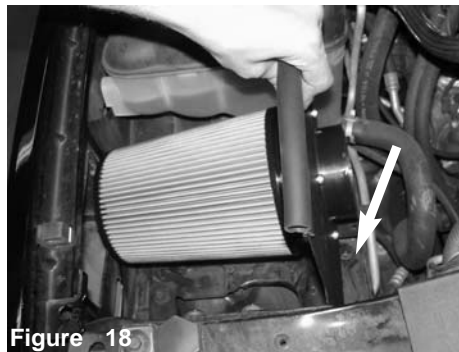


Figure 18

Install the heat shield assembly into the vehicle and position the brackets on the heat shield to the m6 inserts on the air box bracket from earlier step.

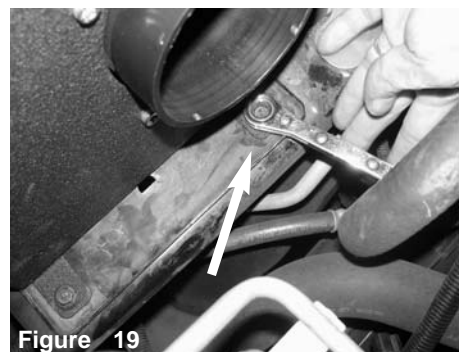


Figure 19

Secure the heat shield using the factory bolts and tighten using 10mm socket or wrench.



Figure 20

Attach the MAF sensor assembly to the adaptor. **Make sure the hump hose is on the adaptor.**



Figure 21

Tighten the clamp on the adaptor only using 8mm nut driver.



Figure 22

The electrical sensor harness is now press over the mass air flow sensor.



Figure 23

Lower the cast intake into the engine compartment as shown above. Align the press the lower inlet side into 3 3/4" straight hose.



Figure 24

Prior to inserting the outlet end into the throttle body step hose, install the provided 11" -10mm vacuum line over the intake port.



Figure 25

Continue to press the intake end into the step hose and tighten the power-band using 8mm nut driver.



Figure 26

Once you have aligned the entire intake, continue to tighten all nuts, bolts and clamps. Now, press the engine cover back to its original location.

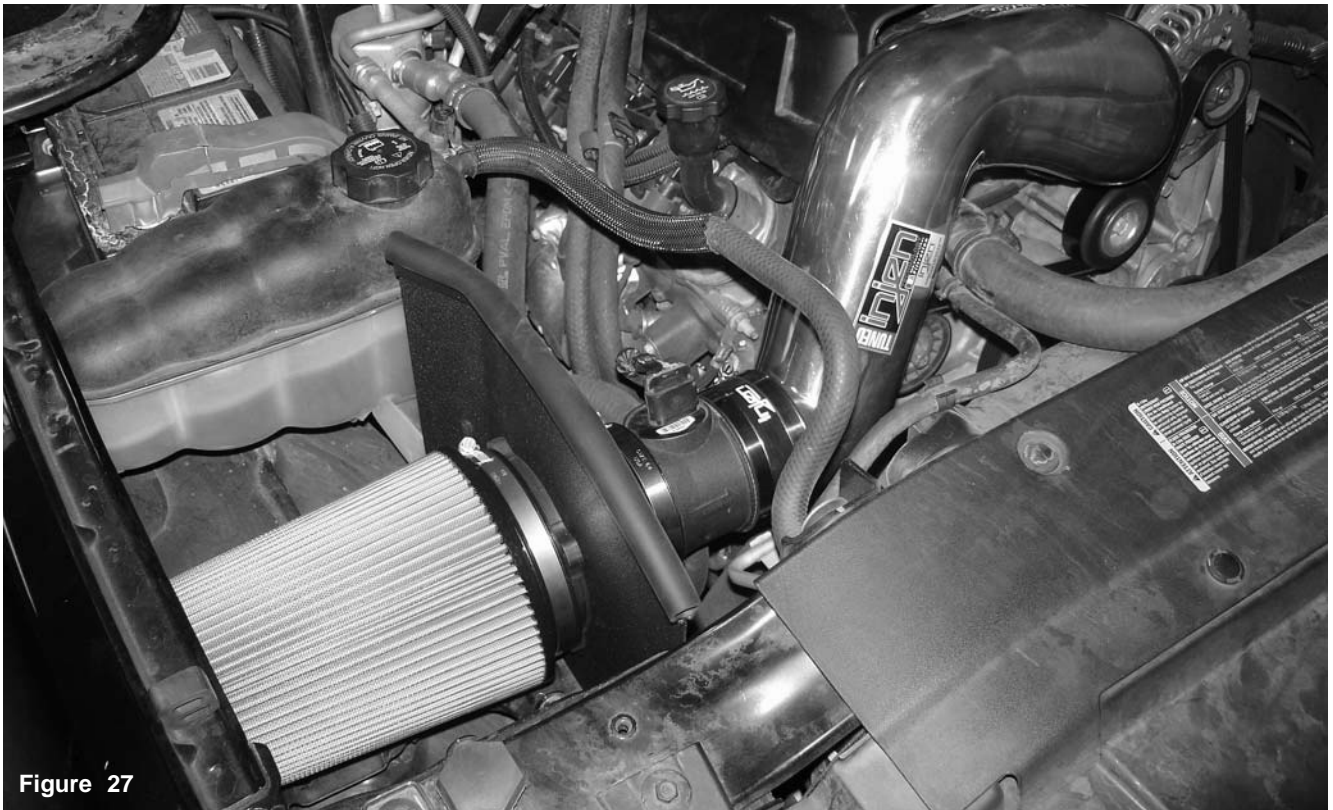


Figure 27

Start your engine and allow the on board computer to adjust to the added volume or air. Listen to the engine and make sure there are no rattles or spikes when idling. Enjoy the added power and performance of the best intake system today.

**You have purchased the Worlds first tuned intake system available anywhere. The Power-Flow intake system features Injen's patent pending MR Technology used to tune the intake and Power-Flow box. With Power-Flow, calibrating of the MAF sensor is not required because the intake system comes tuned for use. Use only Injen replacement filters. The use of any other filter will change the air/fuel ratio that can cause damage to your engine.**