



INSTALLATION INSTRUCTIONS FOR PART #99901 AND 99902 CHROME AND BLACK CHROME PUSH UP TIE DOWNS

PATENT PENDING

Congratulations on your purchase of a high quality PUTCO product. Should you need any application or technical assistance feel free to call us at:

1-800-247-3974

Monday-Friday 8:00 a.m.- 5:00 p.m. (Central Standard Time)

Contact your PUTCO dealer for other quality accessories.

PUTCO Inc. - 216 West First Street - Story City, Iowa 50248

Please read all instructions before installation and to check to see that all parts are included.

Step 1: Separate the parts and make sure that you have all the parts shown in **Figure 1** for each Push Up Tie Down.

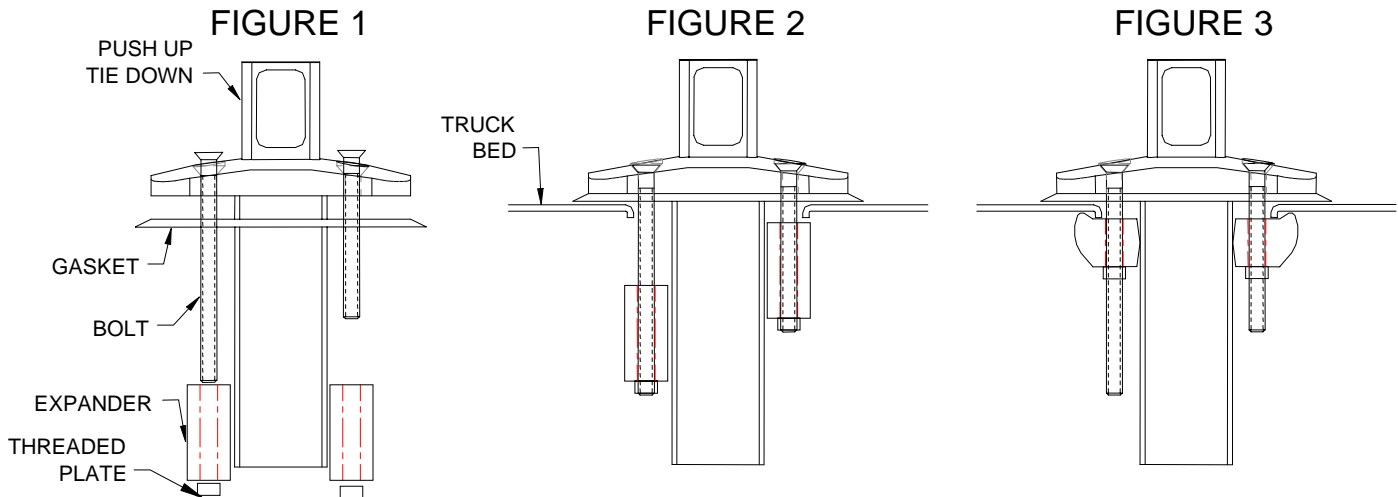
Step 2: Assemble the Push Up Tie Down, gasket, expanders and threaded plates as shown in **Figure 2**. Make sure that the expanders are as far down on the bolt as possible. **NOTE:** You may need to compress the expander block slightly to fit the shorter bolt.

NOTE: The rubber mounting blocks may need to be trimmed to fit some of the smaller stake pocket holes, such as Ford and 88-98 Chevy/GMC.

Step 3: Insert the complete assembly into the stake pocket. **NOTE:** One bolt has been left long so that you can angle the assembly into the hole on smaller stake pockets.

Step 4: Make sure the Push Up Tie Down is centered and tighten the bolts so that the expanders flare out and grip the sides of the pockets as shown in **Figure 3**. **DO NOT OVER TIGHTEN** as this may cause the side rail to deform.

NOTE: PUTCO recommends applying a high quality automotive wax to maintain the original appearance on your new Push Up Tie Downs.



LIFETIME WARRANTY

Putco guarantees its Stainless Steel and Aluminum products against defects in workmanship and material for as long as you own your vehicle. Black products have a 90 day warranty on the painted surface. Any defects resulting from faulty material or workmanship will be warranted by Putco and repaired or replaced at our discretion. Putco assumes no extra labor costs. Damages caused by freight carriers, improper installation, misuse, collision, or neglect will not be warranted by Putco.