

2014+ GM Truck Cat Back Exhaust Kit 4.3L/5.3L/6.2L

Installation Instructions

P/N: 620074 (99-47) 4.3L/5.3L

P/N: 620080 (99-139) 6.2L



SLP[®]
STREET LEGAL PERFORMANCE

39555 Schoolcraft Rd, Plymouth MI, 48170 | 855.SLP.PERF

2014+ GM Truck Cat Back Exhaust Kit 4.3L/5.3L/6.2L

Installation Instructions

P/N: 620074 (99-47) 4.3L/5.3L,
620080 (99-139) 6.2L



Application: 2014+ Chevrolet Silverado/GMC Sierra equipped with the 4.3L/5.3L/6.2L

Important Note:

Before installing your SLP exhaust, please read through the entire installation procedure and check to make sure all items are present. Contact SLP Customer Service at 1-855-SLP-PERF, 9:00 AM to 5:00 PM EST weekdays, for any questions regarding fit or instructions that are unclear to you.

TABLE OF CONTENTS

Packaging List for 4.3L/5.3L V8 Exhaust Kit 620074 (99-47).....3
Packaging List for 6.2L V8 Exhaust Kit 620080 (99-139).....3
Equipment and Supplies Required.....3
Limit of Liability Statement.....4
Safety Precautions4
Work Safely!4
Original Exhaust System Removal5
SLP Exhaust System Installation.....5

2014+ GM Truck Cat Back Exhaust Kit



NOTE: All illustrations in this manual are representative of the 2014+ GMT SLP cat back exhaust systems.

PACKAGING LIST FOR 4.3L/5.3L V8 EXHAUST KIT 620074 (99-47)

Description	Part Number	Quantity
Inlet Pipe – 119" and 133" WB	5-46	1
Inlet Pipe – 143.5" and 153.5" WB	5-47	1
Hanger – 119" WB	6-1	1
Hanger – 133" WB	6-2	1
Muffler	1115-5230	1
Over-Axle Pipe	5-48	1
Exhaust Tip (SLP Etched)	310305787	1
Clamp – 3" Diameter	10-0439	3
Clamp – Ball Flange	93-0088	1

PACKAGING LIST FOR 6.2L V8 EXHAUST KIT 620080 (99-139)

Description	Part Number	Quantity
Inlet Pipe – 119" and 133" WB	5-68	1
Inlet Pipe – 143.5" and 153.5" WB	5-69	1
Hanger – 119" WB	6-1	1
Hanger – 133" WB	6-2	1
Muffler	1115-5230	1
Over-Axle Pipe	5-48	1
Exhaust Tip (SLP Etched)	310305787	1
Clamp – 3" Diameter	10-0439	3
Clamp – Ball Flange	05958081075	1

EQUIPMENT AND SUPPLIES REQUIRED

- 3/8" Drive Ratchet
- 3/8" Drive Extension 3"
- 13 mm and 15 mm Sockets
- Spray Lubricant (Soapy Water/Glass Cleaner)
- Reciprocating Saw ("Sawzall") or Equivalent Cutting Tool
- Tape Measure
- Marker Pen

If you are missing any items, please call us toll free at 1-855-757-7373.

LIMIT OF LIABILITY STATEMENT

The information contained in this publication was accurate and in effect at the time the publication was approved for printing and is subject to change without notice or liability. Street Legal Performance (SLP) reserves the right to revise the information presented herein or to discontinue the production of parts described at any time.

SAFETY PRECAUTIONS



CAREFULLY READ THE IMPORTANT SAFETY PRECAUTIONS and WARNINGS BEFORE PROCEEDING WITH THE INSTALLATION!

Appropriate disassembly, assembly methods and procedures are essential to ensure the personal safety of the individual performing the kit installation. Improper installation due to the failure to correctly follow these instructions could cause personal injury or death. Read each step of the installation manual carefully before starting the installation.

- Always wear safety glasses for eye protection.
- Place ignition switch in the OFF position.
- Always apply the parking brake when working on a vehicle.
- Block the front and rear tire surface to prevent unexpected vehicle movement.
- If working with a lift, always consult vehicle manual for correct lifting specifications.
- Operate the engine only in well-ventilated areas to avoid exposure to carbon monoxide.
- Do not smoke or use flammable items near or around the fuel system.
- Use chemicals and cleaners in well-ventilated areas.
- Batteries produce explosive gases, which can cause personal injury. Therefore, do not allow flames, sparks or flammable substances to come near the battery.
- Keeps hands and any other objects away from the radiator fan blades.
- Keep yourself and your clothing away from moving parts when the engine is running.
- Do not wear loose clothing or jewelry that can get caught in rotating parts or scratch surface finishes.
- Allow the engine, cooling system, brakes and exhaust to cool before working on a vehicle.

WORK SAFELY!

Perform this installation on a good clean level surface for maximum safety and with the engine turned off.

ORIGINAL EXHAUST SYSTEM REMOVAL

1. Disconnect the ball flange clamp on the factory exhaust that connects the exhaust system to the catalyst pipe.



2. Remove the factory exhaust by disconnecting each exhaust hanger from the exhaust system.

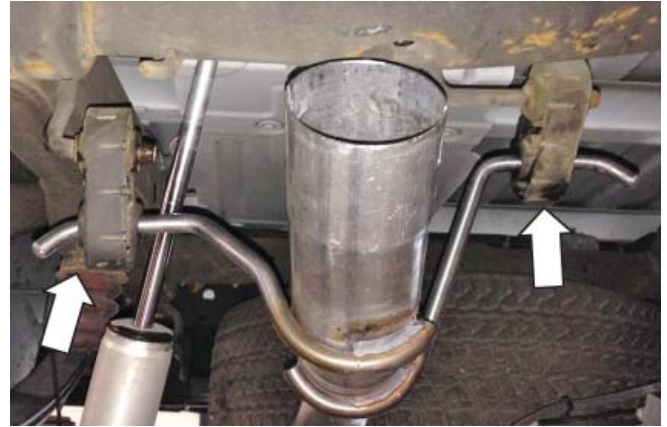
NOTE: The system can be removed as one (1) piece by removing it rearward over the rear axle. However, it may be easier to cut the system into two (2) pieces by cutting behind the muffler.

WARNING

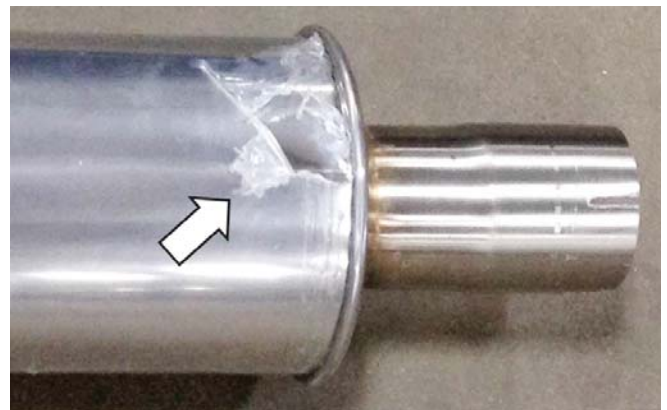
Use extreme caution during installation. Torque all fasteners according to manufacturer's torque values and tightening sequence. **DO NOT** use air impact tools to tighten fasteners on SLP Exhaust Systems. Use of such tools may result in bent flanges or gasket contact areas leading to exhaust leaks.

SLP EXHAUST SYSTEM INSTALLATION

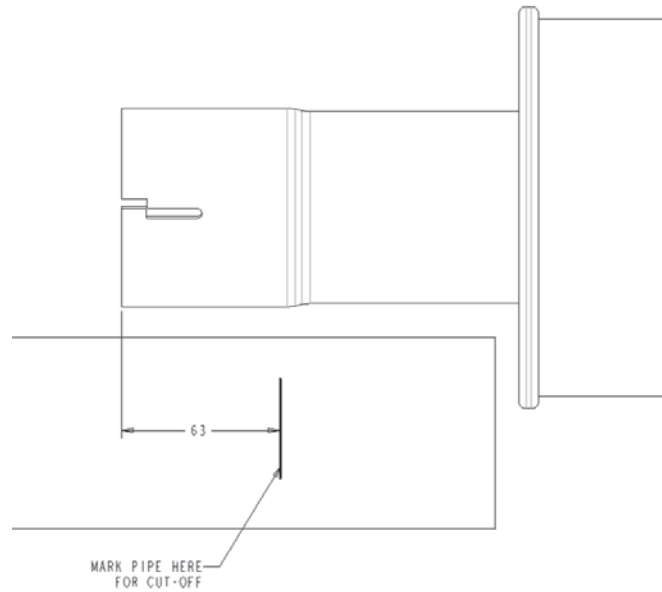
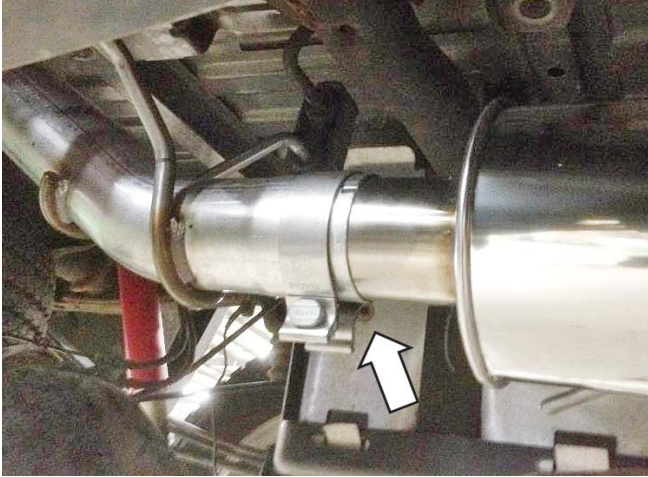
1. Install the over-axle pipe (P/N: 5-48) by inserting it into the three (3) factory rubber hanger mounts.



NOTE: Remove all of the protective plastic film from the muffler (P/N: 1115-5230) before installing.



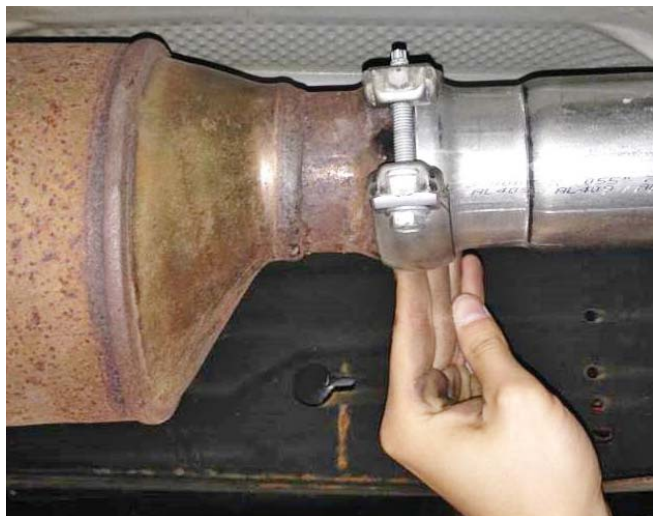
- Place one (1) 3" clamp (P/N: 10-0439) onto the inlet side of the over-axle pipe. Install the muffler (P/N: 1115-5230) on the inlet side of the over-axle pipe until it completely bottoms out. Position the clamp on the joint and tighten to 30 Nm.



- There are two (2) pipes provided in the kit to account for the four (4) different wheel base configurations. Trimming of this inlet pipe will be required for each specific vehicle. To mark the cut point on the inlet pipe, the muffler and over-axle pipe should be in position (rubber hangers are positioned vertically). Using the correct inlet pipe (P/N: 5-46, 119" and 133" WB, 4.3L/5.3L), (P/N: 5-47, 143.5" and 153.5" WB, 4.3L/5.3L), (P/N: 5-68, 119" and 133" WB, 6.2L) or (P/N: 5-69, 143.5" and 153.5" WB, 6.2L) for the vehicle wheel base, temporarily install the ball flare end of the inlet pipe against the catalyst flange and mark the inlet pipe, accounting for the 2-1/2" engagement into the muffler inlet for a proper seal. Remove the inlet pipe and cut it with a suitable cutting tool.

- Place one (1) 3" clamp (P/N: 10-0439) onto the end of the trimmed inlet pipe and insert it into the muffler inlet. Loosely connect the ball flange to the catalyst flange using the ball flange clamp provided (P/N: 93-0088, 4.3L/5.3L) or (P/N: 05958081075, 6.2L). Insert the hanger into the factory rubber hanger mount. On 119" and 133" wheel base configurations, there will be an additional hanger located in front of the muffler. Use the correct hanger for use on the vehicle. Install the hanger clamp (P/N: 6-1, 119" WB) or (P/N: 6-2, 133" WB) on the pipe in position to support the exhaust. Position the clamps on the joint and tighten to 30 Nm.





5. Install one (1) 3" clamp (P/N: 10-0439) over the outlet of the over-axle pipe and install the tip (P/N: 310305787) onto the outlet end of the over-axle pipe. Position and orient the tip to the desired location. Position the clamp on the joint and tighten to 30 Nm.



Before starting the vehicle, make sure to check all wires, hoses, brake lines, body parts, tires and any other components for safe clearance from the exhaust system.

Start the vehicle and check for any exhaust leaks. If any leaks are found, determine the cause (such as insufficient pipe engagement, loose or incorrectly positioned clamp) and repair as necessary.

Congratulations!!! You have completed the installation of your SLP cat back exhaust kit. It is recommended that you save all parts removed from the vehicle during the installation of this kit.