

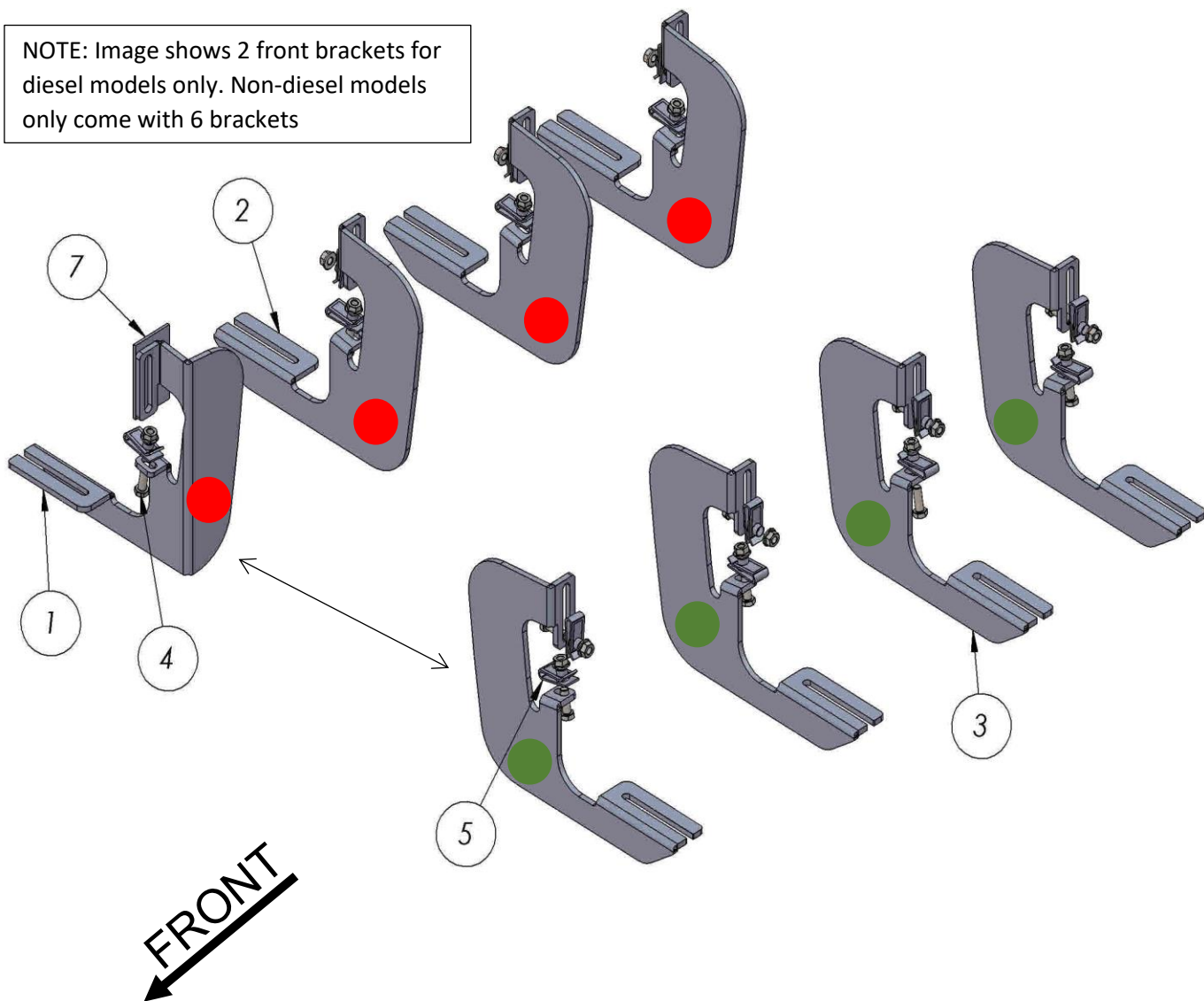


1425-SILVERADO 1999-Present

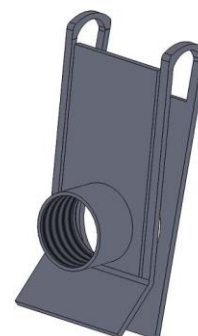


Video Installation Available

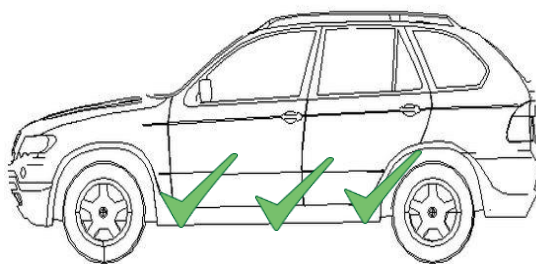
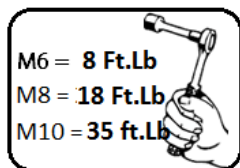
NOTE: Image shows 2 front brackets for diesel models only. Non-diesel models only come with 6 brackets



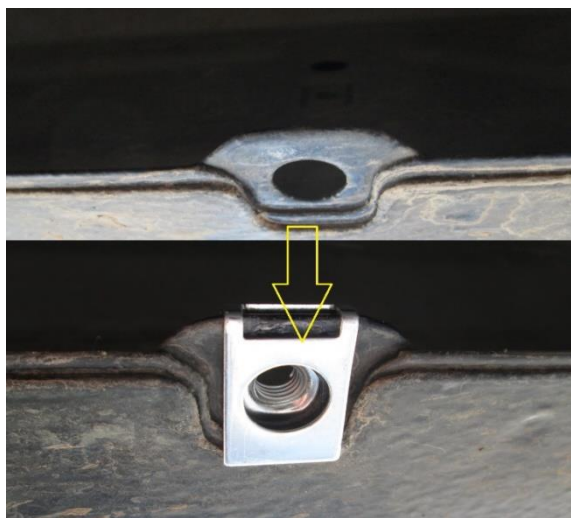
ITEM	PART NUMBER	QTY
1	1425850F0 PASSENGER	1
2	1425850C0B0 PASSENGER	3
3	SILVERADOF0C0B0 DRIVER	4
4	DIN 933 BOLT M8 x 25	15
5	M8 U-NUT	15
6	DIN 6923 FLANGE NUT M8	15
7	SPONGE	1



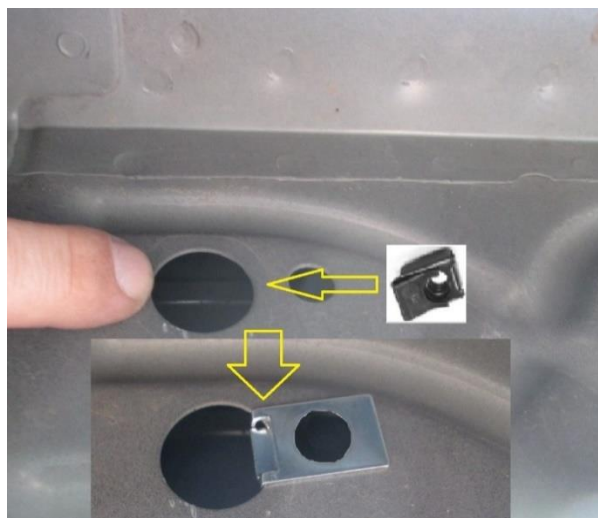
7



NOTE: This procedure is the same for all brackets.



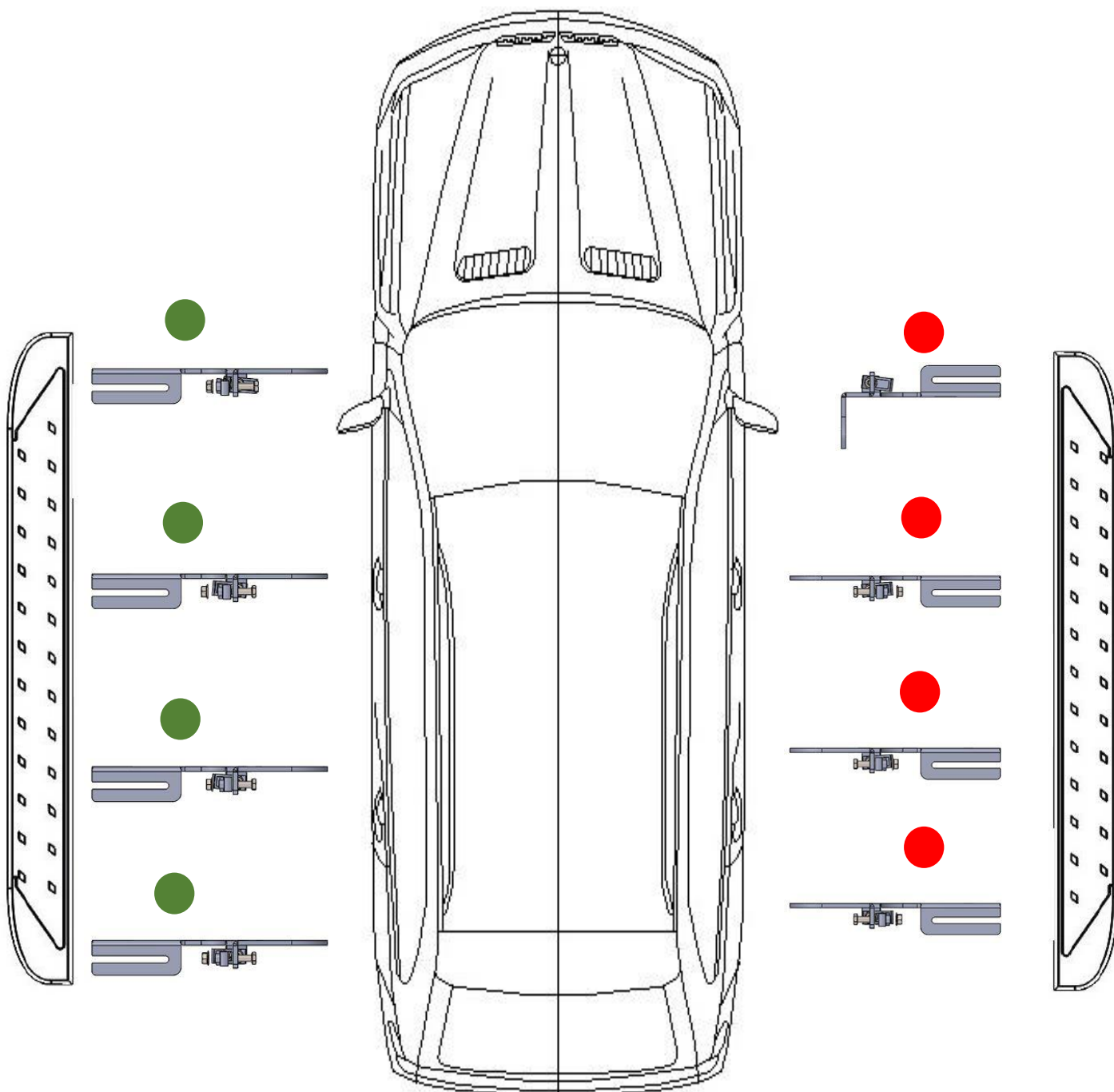
1) Insert M8 Unut on vehicle pinch weld



2) Insert M8 Unut on vehicle as shown above



- 4) Install brackets as shown above using supplied hardware. Do not tighten anything yet.
- 5) Install running boards, align them and hand tighten only.
- 6) Once running boards are align, proceed to tighten mounting brackets to vehicle to 18 ft.lb
- 7) Tighten running boards to 18 Ft.Lb **WARNING:**Use of powertools will void warranty



WARNING: Use of powertools will void warranty

ATTENTION PLEASE! : DO NOT TIGHTEN ALL OF THE SCREWS UNTIL ALL OF THE PARTS ARE INSTALLED.

NE PAZ SERRER L'ENSEMBLE QU'APRES TOUTES LES PHASES DU MONTAGE, ET UNE FOIS LES MARCHE PIEDS SONT CENTRES

NO DAR APRIETE AL CONJUNTO HASTA HABER FINALIZADO TODAS LAS FASES DE MONTAJE Y TENER CENTRADAS LAS

Keep your Romik accesories clean. To prevent corrsion and to maintain your high quality finish, wax or polish regularly with quality stainless polish. Use a non abrasive type automotive wax. Any use of abrasive soaps, polishes or waxes can be detrimental to the finish.

For additional installation assistance please call customer service 610-443-2122

ROMIK. 2714 Lehigh Street - Whitehall, PA 18052

www.romik.com