



## Barricade Tubular HD Front Bumper w/ LED Light Bar (14-15 Silverado)

### Contents:

- |                                      |                              |                            |
|--------------------------------------|------------------------------|----------------------------|
| (1) - Bumper                         | (6) - M10 Lock Washers       | (2) - Double Bolt Brackets |
| (2) - License Plate Mount & Hardware | (6) - M10 Nuts               | (2) - Single Bolt Brackets |
| (1) - Mesh Grille                    | (8) - M8 Flat Washers        | (6) - M12 Flat Washers     |
| (6) - M10 x 1.50 x 35mm Bolts        | (4) - M8 Lock Washers        | (6) - M12 Lock Washers     |
| (4) - M8 x 1.25 x 25mm Bolts         | (4) - M8 Nuts                | (6) - M12 Nuts             |
| (12) - M10 Flat Washers              | (6) - Plastic Holder Washers | (10) - Zip Ties            |

- \*\* Optional (1) - 20" LED Light Bar
- \*\* Optional (1) - Light Wiring Harness
- \*\* Optional (1) - Light Hardware Kit

### TOOLS REQUIRED:

- Basic Hand Tools
- 21mm Socket



**STEP 1** // Using a panel removal tool, remove the (12) plastic grille cover push pins and remove the grille cover.



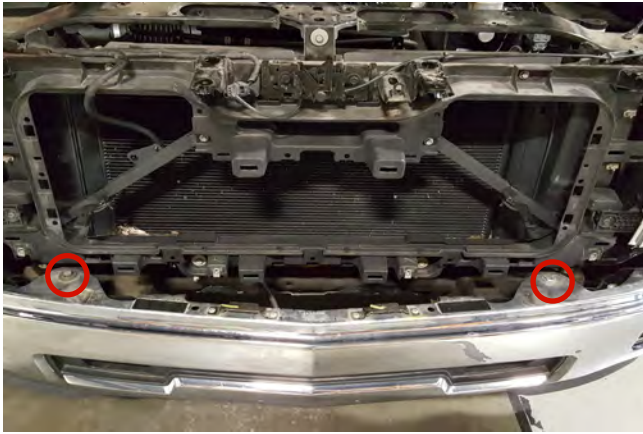
**STEP 3** // From underneath the vehicle, remove the lower (4) 10mm grille bolts. Remove grille completely.



**STEP 2** // Next, remove the upper (4) 10mm bolts holding the grille in place.



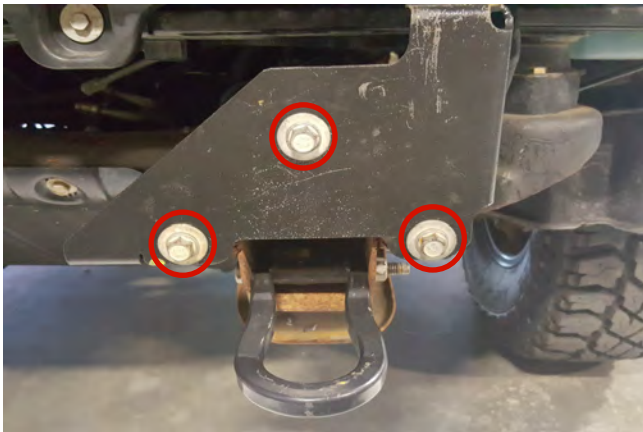
**STEP 4** // From underneath the vehicle, remove the (2) M10 bolts holding the front bumper to the frame.



**STEP 5** // Remove the (2) 21mm bolts on top of the bumper that hold it to the bumper brackets. Remove bumper.



**STEP 8** // If equipped with factory tow hooks, use the factory hardware to install the tow hooks to the extension brackets.



**STEP 6** // Remove the (3) 21mm bolts holding the factory bumper brackets to the frame. Remove the bolts from the other side and remove the brackets. If equipped, remove the tow hooks, they will be reinstalled in step 9.



**STEP 9** // Tow hook extension bracket install: Insert the double bolt plate, and single bolt plate in the tow hook brackets as shown above and install in the factory location using the (3) M12 flat washers, lock washers, and nuts.



**STEP 7** // Install the (2) new bumper brackets to the Barricade bumper using the (3) M10x1.50x35mm bolts, flat washers, lock washers, and nuts per side.



**STEP 10** // The bumper will include a bolt on mesh cover. Secure the cover to the bumper using (4) M8 x 20mm bolts, lock washers, and nuts. If purchased with the LED lighting option: Install the LED light using the hardware provided in the light packaging.





**STEP 11** // Slide bumper into place, and secure using the factory hardware.



**STEP 14** // Optional LED Wiring: Install the Red 12+ volt wire to the positive battery terminal. Connect the black ground wire to the negative battery terminal. Secure any excess wiring away from any hot/moving engine bay components.



**STEP 12** // If required install the front license plate bracket using (2) M6 screws, lock washers, and nuts.



**STEP 15** // Optional LED Wiring: Route the on/off switch to the interior of the vehicle using a suitable body grommet. Mount the switch in the desired location. Safely secure any excess wiring out of the way.



**STEP 13** // Optional LED Wiring: Connect the supplied wiring harness to the LED lights. Be sure to zip tie the excess wiring away from hot/moving engine bay components.