

ACS THIRD LOAD BAR INSTRUCTION

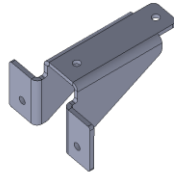
APPLICABLE MODELS:

Small TO Midsize Trucks with 48" load bar

PACKAGE CONTENTS



48" load bar
(QTY.1)



Crossbar Bracket
(QTY.2)



Crossbar endcap
(QTY.2)

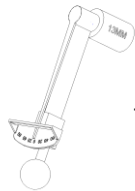


M8 Locknut
(QTY.8)



M8 T-Bolt
(QTY.8)

TOOLS REQUIRED



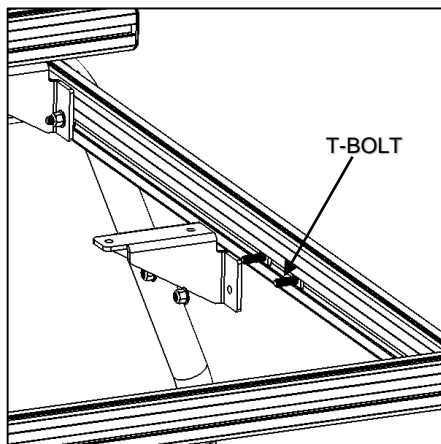
TORQUE WRENCH
WITH 13MM DEEP
SOCKET

BEFORE INSTALLATION

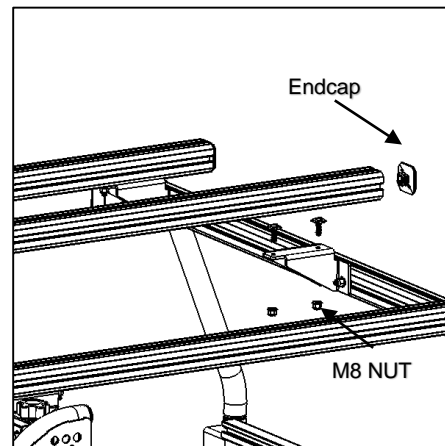
READ ENTIRE INSTRUCTIONS BEFORE PROCEEDING.

1 ATTACH THIRD LOAD BAR

- 1) INSTALL FOUR T-BOLTS INTO THE INNER TOP RAIL OF THE ACS SYSTEM . TWO ON PASSANGER SIDE AND TWO ON DRIVERS SIDE. USING 8MM LOCK NUTS SECURE BRACKETS IN PLACE. BRACKET SHOULD BE CENTERD BETWEEN FRONT AND REAR CROSS BEAMS.TORQUE TO 16 LB-FT (FIG 1)
- 2) INSTALL 2 T-BOLTS FROM THE TOP DOWN INTO EACH CROSS BAR BRACKET. INSTALL 8MM LOCKNUT TO KEEP T-BOLTS IN PLACE. (FIG 2)
- 3) SLIDE LOAD BAR ONTO T-NUTS FROM ONE SIDE TO THE OTHER. MAKE SURE LOAD BAR IS CENTERD ON VEHICLE. TIGHTEN M8 NUTS TO 16 LB-FT. INSTALL ENDCAPS



(fig 1)



(fig 2)