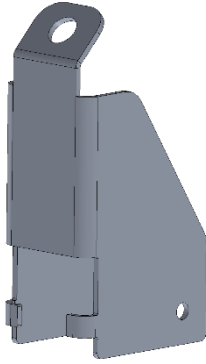


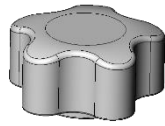
ACS LOAD STOP INSTRUCTION

APPLICABLE MODELS:
 ALL

PACKAGE CONTENTS



Load Stop
(QTY.4)



Slide Knob
(QTY.4)



M8 T-Bolt
(QTY.4)

BEFORE INSTALLATION

READ ENTIRE INSTRUCTIONS BEFORE PROCEEDING.

1 ASSEMBLE LOAD STOP AND INSTALL

- 1) INSTALL A T-BOLT AND SLIDE KNOB ON ALL FOUR PARTS AS SHOWN IN (FIG 1).
- 2) REMOVE ENCAP AND SLIDE LOAD STOP ONTO EXTRUSION. ADJUST TO DESIRD POSITION AND HAND TIGHTEN KNOB. REATACH ENDCAP. (FIG 2)
- 3) THE HOLE IN THE LOAD STOP IS FOR BUNGY CORD AND TIE DOWNS ONLY **DO NOT USE RATCHET STRAPS!!**

