



## IMPORTANT WARRANTY & INSTALLATION INSTRUCTIONS ATTACHED

*Please Forward All Attached Information to Consumer  
Warranty Not Valid Unless Returned to CORSA Exhaust*

We ask that you take a few moments to complete our warranty registration form:

TO ACTIVATE YOUR LIMITED LIFETIME WARRANTY GO TO:

**[CORSAPERFORMANCE.COM/WARRANTY](https://corsaperformance.com/warranty)**



For Full-Color Installation Instructions, Please Visit:

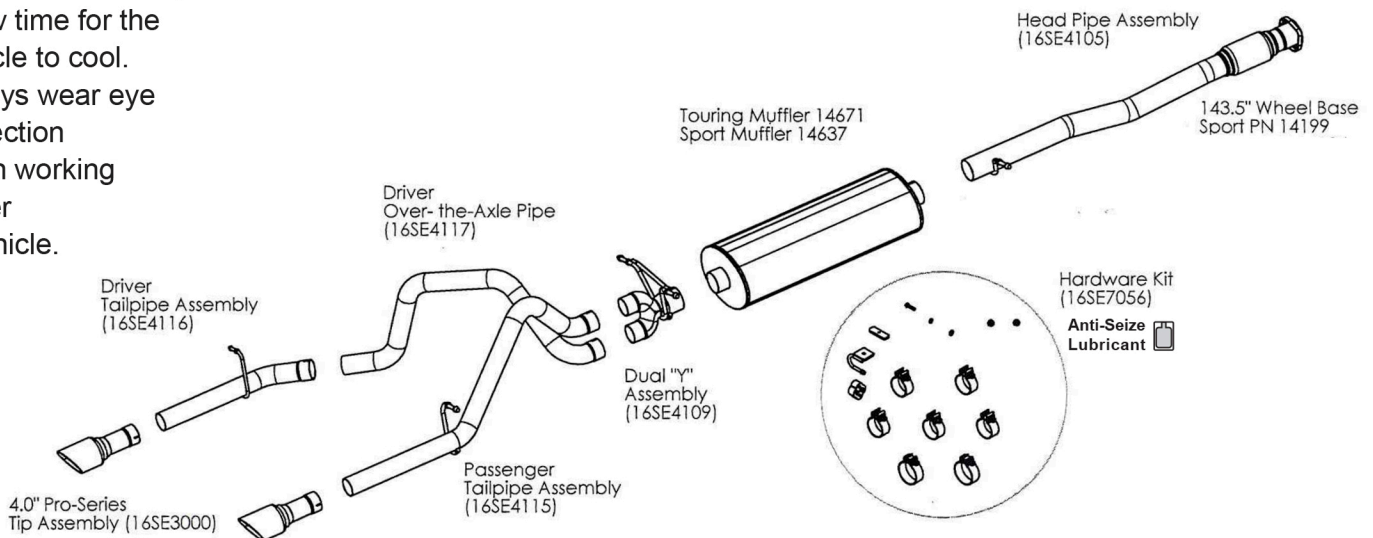
**[CORSAPERFORMANCE.COM](https://corsaperformance.com) and Search by Part Number**

Please be sure to review the enclosed instructions prior to beginning the installation process.  
If you have any questions about the enclosed parts, instructions or encounter a problem during  
Installation: **CALL CORSA PERFORMANCE TECHNICAL ASSISTANCE AT  
800.486.0999**

**Please take time to read and understand these installation instructions.**

CORSA recommends that installation of this system be performed by a qualified service center or professional muffler installer who has the necessary equipment, tools and experienced personnel. However, if you decide to perform this install, the use of a hoist and an additional person will be required.

**CAUTION:** Never work on a hot exhaust system. Allow time for the vehicle to cool. Always wear eye protection when working under a vehicle.



Please confirm that all parts are present before beginning the factory exhaust system removal and CORSA exhaust system installation.

## Recommended Tools:

Tape Measure  
 1/2" Socket  
 Soapy Water

Black Marking Pen  
 Chain Style Pipe Cutter  
 Safety Glasses

15mm Socket and Ratchet  
 Grommet Pullers  
 Torque Wrench

## Removal of Stock System:

**SKIP STEPS 1 & 2 IF INSTALLING ON 119" W.B. REG. CAB/STD. BOX TRUCK.**

- 1) Scribe a line 12" forward from the front face of the stock muffler. (See Fig. A)
- 2) Place a chain style cutter around the exhaust pipe at the scribe line location and cut the exhaust pipe. (See Fig. B)
- 3) Remove the hangers from the grommets at the muffler exit, near the spare tire and finally ahead of the muffler, using grommet pullers or similar device. (See Fig's C, D & E)  
**Note: Using a soapy solution on the grommet hole will make the job easier.**
- 4) Use a 15mm socket and ratchet to remove the flange nuts at the flange connection of the head-pipe. This completes the removal of the stock system. (See Fig's F & G)
- 5) Remove the muffler and rear tailpipe section from the vehicle by lifting the tailpipe over the rear axle and pulling forwards toward the front of the vehicle. (See Fig's H & I)



FIG. A



FIG. B

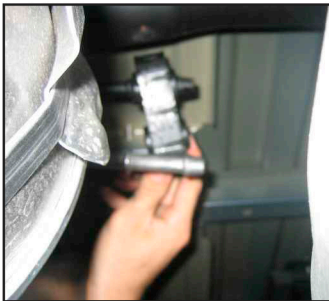


FIG. C



FIG. D



FIG. E

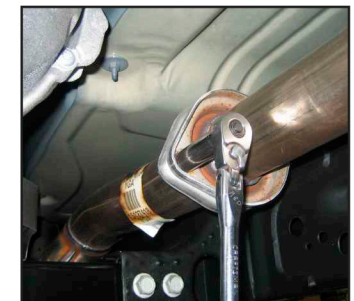


FIG. F



FIG. G



FIG. H

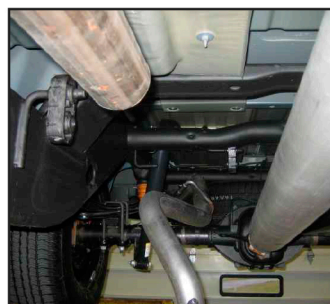


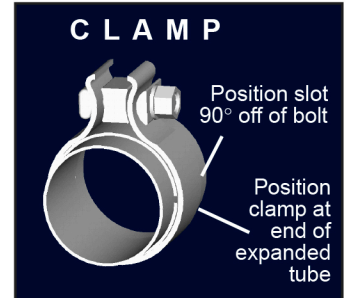
FIG. I

**Technical  
Assistance:  
Call  
800.486.0999.**



## Installation of CORSA Exhaust System:

**NOTE:** Apply the anti-seize lubricant (supplied) to the threads **ONLY** of all the clamps and flange bolts. Failure to follow this procedure can cause nuts to seize on clamps and potentially destroy threads. After applying anti-seize lubricant, be sure to thoroughly clean hands as lubricant will tarnish stainless steel. All clamps should be tightened using a properly calibrated Torque Wrench. Using an air impact gun will damage the clamp and reduce its ability to effectively seal the joint. It may also cause the joint to separate thereby causing damage to your exhaust system and your vehicle.



- 1) Locate the CORSA Head Pipe assembly and slide the flange over the studs on the factory flange. Use the nuts supplied with the CORSA hardware kit and evenly tighten down to 30 Ft-lbs. Insert the hanger into the factory grommet. **(See Fig's J & K)**

**Note:** Using a soapy solution on the grommet hole will make the job easier.

- 2) Slide a supplied 3" TORCA clamp over the inlet of the CORSA muffler. Make sure the weep hole is facing down then slide the muffler onto the Head Pipe and pre-tighten the clamp so it is snug but can still rotate. **(See Fig's L, M and N)**



FIG. J

- 3) Slide a supplied 3" TORCA clamp over the inlet of the CORSA Dual "Y" Assembly and insert over the muffler exit and place the hangers into the factory grommets. Pre-tighten the clamp. **(See Fig's O, P, Q, & R)** **Note:** Using a soapy solution on the grommet hole will make the job easier.



FIG. K



FIG. L

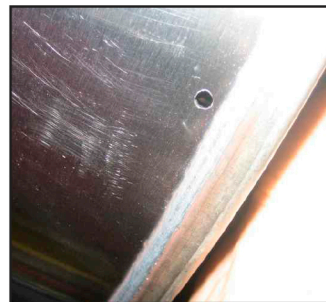


FIG. M

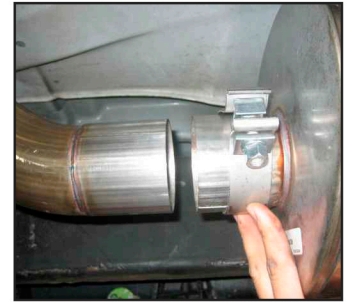


FIG. N



FIG. O

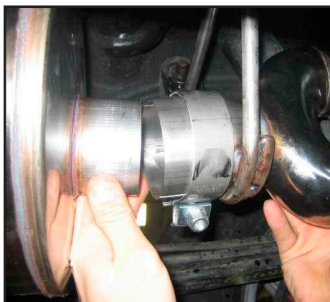


FIG. P



FIG. Q

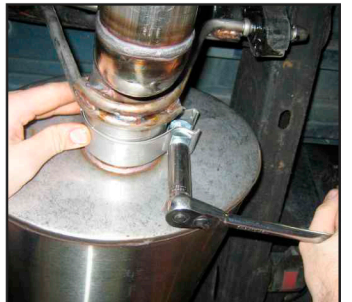


FIG. R



- 4) Slide a 2.5" TORCA clamp over the passenger side tailpipe assembly and place the pipe onto the upper end of the Dual "Y" Assembly and insert the hanger into the factory grommet. Pre-tighten the clamp at this time. **(See Fig's S, T, U, & V)**  
**Note: Using a soapy solution on the grommet hole will make the job easier.**
- 5) Slide a 2.5" TORCA clamp over the "Driver over the axle Pipe" and place the pipe onto the lower end of the Dual "Y" Assembly. Leave the pipe loose at this time for adjustment when placing the driver side tailpipe onto the over the axle pipe. **(See Fig's W, X, & Y)**
- 6) Locate Driver Side tail pipe hanger assembly ("U" shaped Wire Loop & Plate) and hardware (threaded Mounting Plate, bolt and washers) **(See Fig. Z)**. On the driver side of the vehicle, position the threaded rectangular-shaped mounting plate on top of the frame rail over the hole located furthest forward from the rear of the frame rail. **(See Fig. AA & BB)**
- 7) Insert the supplied 5/16"-18 bolt through the tail pipe Wire Loop & Plate hanger and thread it into the threaded Mounting Plate on top of the frame.  
**Note: Position the driver side hanger so that it faces toward the spare tire (See Fig. CC)**

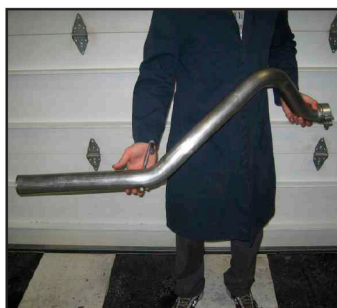


FIG. S



FIG. T



FIG. U



FIG. V

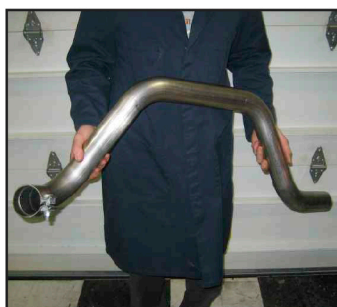


FIG. W



FIG. X



FIG. Y



FIG. Z

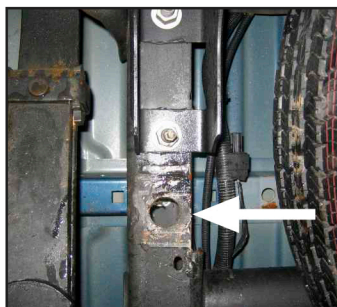


FIG. AA

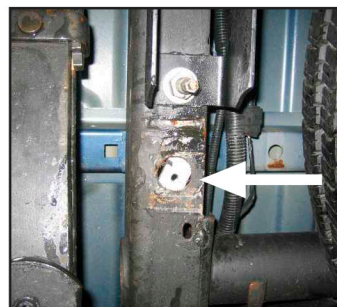


FIG. BB



FIG. CC

**Technical Assistance:  
 Call  
 800.486.0999.  
 Continue to page 5.**



- 8) Slide a 2.5" TORCA clamp over the inlet of the drivers side tailpipe and install tail pipe onto the over the axle pipe (See Fig's DD, EE & FF). Insert tail pipe hanger into provided rubber grommet and pre-tighten clamp at this time.  
**Note: Using a soapy solution on the grommet hole will make the job easier.**
- 9) Locate exhaust tip assemblies and slide 2.5" TORCA clamp over expanded end of tip assembly. With the bolt and nut facing up, snug fit the clamps on each tip assembly. Do not tighten at this time. (See Fig's GG & HH)
- 10) Check the alignment of tail pipes and tips. (See Fig. II) Make sure there is at least 1.5" clearance between the tips and bottom of the bumper. Align tail pipes if necessary by making adjustments at the slip joints.

Proceed to next page.



FIG. DD



FIG. EE

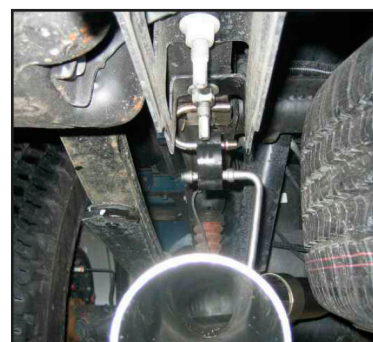


FIG. FF



FIG. GG



FIG. HH



FIG. II

**If you have any questions about the installation process, call CORSA Performance and ask one of our Sales & Technical Service Representatives. Do not attempt to make any modifications to parts as this will void your warranty. Call (800) 486-0999.**

## Recommended Minimum Clearance to Components:

Distance from Pipe to Fuel Pump Control Module (Fig. JJ):	1.6 in. / 40 mm.
Distance from Pipe to Spare Tire (Fig. KK):	2.4 in. / 60 mm.
Distance from Pipe to Shock Absorber Boot (Fig. LL):	2.4 in. / 60 mm.
Distance from Pipe to Brake Line Sleeve (Fig. MM):	2.4 in. / 60 mm.

**NOTE:** Failure to follow these instructions and maintain the recommended clearances to the above listed parts could impact the long term performance of said parts. Please contact the CORSA Performance Customer Service Department (800-486-0999) if you have any questions related to the above information.



FIG. JJ



FIG. KK

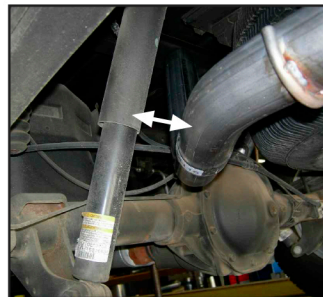


FIG. LL

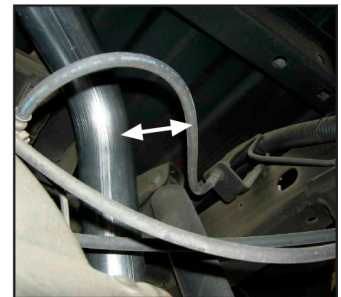


FIG. MM

- 11) Starting from the front of the CORSA exhaust system, tighten all TORCA clamps to **45 ft-lbs** using a torque wrench. Make sure clamps are positioned and tightened as shown. (See Fig. NN)
- 12) It is strongly suggested that all clamps be checked and tightened if necessary after road testing the vehicle and after the system has cooled.

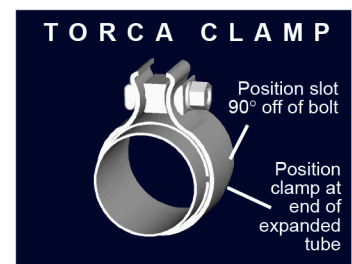


FIG. NN

**NOTE:** During cold weather start-ups, you may experience an exhaust sound that is deeper and louder in tone than usual. This is temporary and will diminish to normal levels once your engine has reached its normal operating temperature.

**NOTE:** Immediately following the installation of your CORSA exhaust system, you may experience a trace of smoke after initial start-up. DO NOT be alarmed. The smoke is caused by the burning of a small amount of forming oil residue used in the manufacturing process.