

# IMPORTANT: PLEASE RETAIN THIS INSTRUCTION MANUAL FOR FUTURE REFERENCE



## 2007-10 GMC Sierra 1500 "Denali" Style Stainless Steel "Z" & Heavy Metal Mesh Grilles

L 28 G9R

### Notes to the Technician:

E&G is proud to present this package to you and reminds you that for technical information, contact Lynn Eash or Lee Clary at 410-381-4900. Do not attempt installation any E&G product without first reading the detailed instructions. E&G Classics will not warrant damaged parts or vehicle due to altered installation instructions.

Copyright © 2007 by E&G Classics, Inc.

All right reserved. The reproduction or utilization of this work in any form or any electronic, mechanical, or other means, no known or hereafter invented, including xerography, photocopying, and recording, and in any information storage retrieval system is forbidden without written permission of owners.



# MADE IN AMERICA

BY AMERICAN WORKERS WITH  
EXPERT QUALITY CRAFTSMANSHIP

### "Denali" Style "Z" Grille Part # 1091-0185-07

Quantity	Description	Part No.
1	"Denali" Style "Z" Grille	1091-0184-07
(7)	.156 x 1" Vinyl caps	1999-0241-00
1	Hardware Kit (items listed below):	1091-0182-07
(4)	Upper Mounting Brackets	1091-0158-07
(3)	1/4" Double Faced Tape	5999-2027-00
(3)	Lower Mounting Brackets	1091-0157-07
(7)	ESNA Half Nuts	1999-0065-00
(7)	.156" x 1" Vinyl Caps	1999-0241-00
(1)	12 Gage S.S. "Denali" Style "G" Filler	1091-0186-07



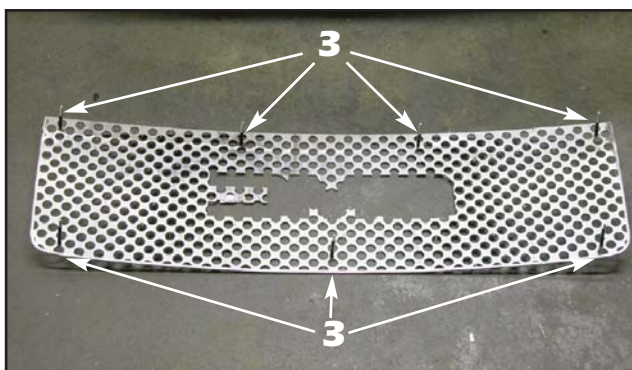
### "Heavy Metal" Mesh Grille Part # 1091-0104-07

Quantity	Description	Part No.
1	"Heavy" Mesh Grille (includes):	*****
	12 Gage Stainless Steel Surround	1091-0034-07
	"Heavy Metal" Mesh Section	1091-0040-07
	12 Gage Stainless Steel Emblem Surround	1091-0035-07
(4)	Black Rectangular Mesh Retainers	1099-0167-05B
(4)	#8-32 ESNA Half Nuts	1999-0065-00
(16)	.156" x 1" Vinyl Caps	1999-0241-00
1	Hardware Kit (items listed below):	1091-1902-07
(6)	1/4" Double Faced Tape	5999-2027-00
(1)	#8 x 3/8" Black Truss Head Screw	1999-9574-00
(5)	Lower Mounting Tabs	1091-0159-07
(1)	ESNA Half Nuts	1999-0065-00
(9)	.156" x 1" Vinyl Caps	1999-0241-00
(1)	12 Gage S.S. "G" Filler	1091-0036-07
(4)	Upper Mounting Brackets	1091-0158-07

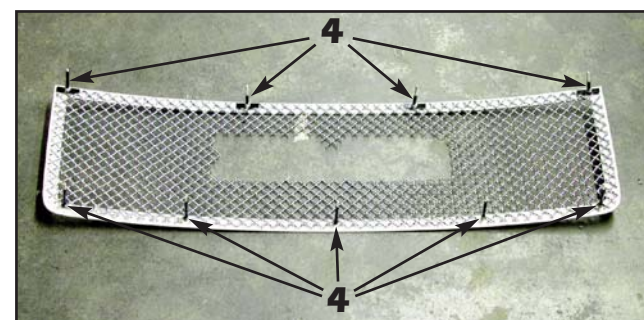
1. Remove the plastic radiator support panel cover by removing the plastic push pins.

2. Thoroughly clean the factory grille and apply protective masking tape to the bottom of the chrome surround and to the top chrome surfaces of the GMC emblem.

**\*USE CAUTION\*** while handling the grille. The stainless steel edges can be very sharp.



3. For "Denali" Style Grilles: Trim the closed ends from the preinstalled vinyl caps push them down over the studs. Trim the ends from seven (7) more vinyl caps and install the caps onto the mounting studs as well prior to installation.



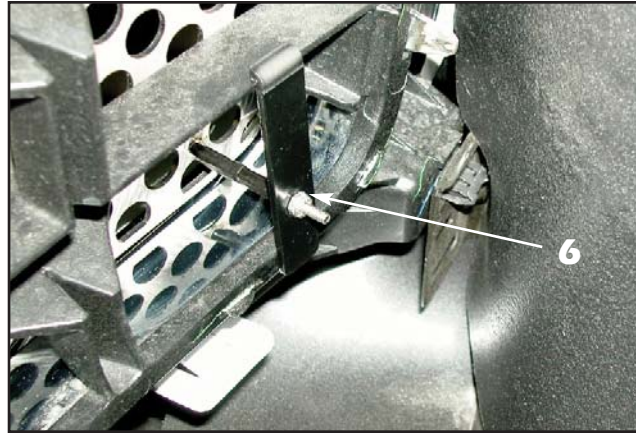
4. For Mesh Grilles: Align the mesh section onto the back of the mesh surround. Trim the closed ends from the preinstalled vinyl caps push them down over the studs. Trim the ends from seven (7) more vinyl caps and install an additional cap onto the studs across the bottom of the grille and another one half (1/2) sleeve onto the studs across the top of the grille prior to installation.

Once the grille is installed, peel off the protective liner from the polished stainless steel. Use a mild solvent and a soft, clean cloth to remove any glue residue from the stainless steel. Use alcohol or glass cleaner and a soft, clean cloth to remove any solvent residue to finish.





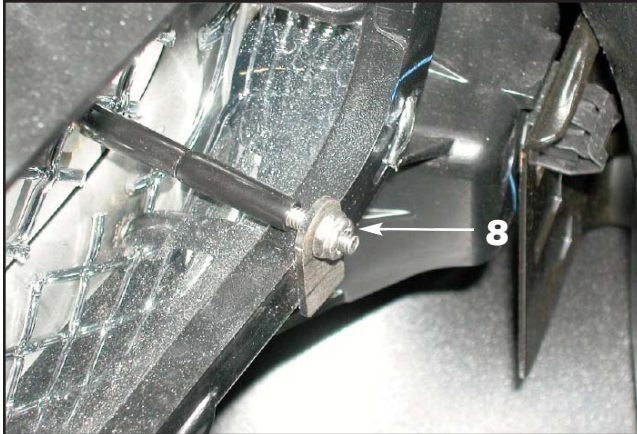
5. For "Denali" style grilles: Carefully align the "Denali" style grille over the factory grille and GMC emblem, making sure you do not damage the chrome plated GMC emblem or the emblem base. Use masking tape to hold the grille in place while aligning the mounting brackets.



6. For "Denali" style grilles: Install the lower mounting brackets onto the studs at the bottom of the grille frame and install a #8-32 ESNA half nut onto each stud but do not completely tighten at this time. Leave the grille slightly loose to aid in masking tape removal outlined in Step 11.



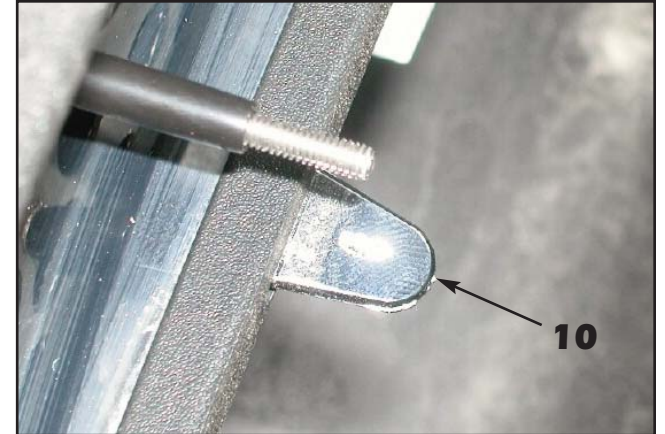
7. For Mesh grilles: Carefully align the mesh grille over the factory grille and GMC emblem, making sure you do not damage the chrome plated plastic GMC emblem or the emblem base. Use masking tape to hold the grille in place while aligning the mounting brackets and tabs.



8. For Mesh grilles: Install the lower mounting tabs onto the studs at the bottom of the grille surround and install a #8-32 ESNA half nut onto each stud but do not completely tighten at this time. Leave the grille slightly loose to aid in masking tape removal outlined in Step 11.

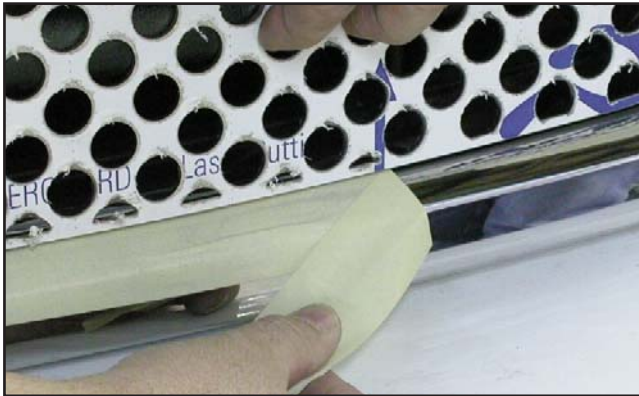


9. "Denali" and Mesh grilles: Align the upper mounting brackets so that they lock underneath the bottom edge of the factory grille fin. install a #8-32 ESNA half nut onto each stud but do not completely tighten at this time. Snug the nuts against the brackets to keep the brackets properly aligned (Mesh shown, "Denali" style grille same).

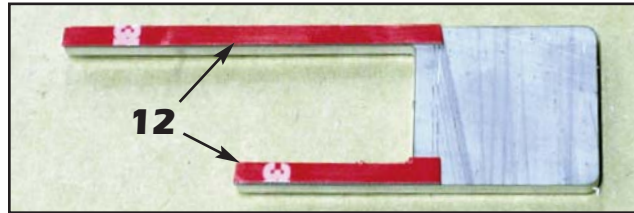
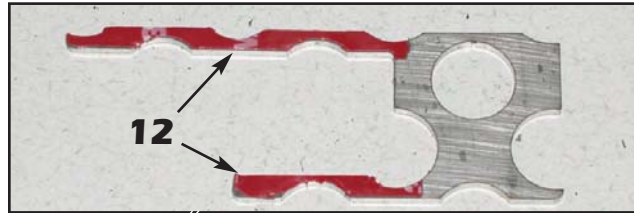


10. "Denali" and Mesh grilles: You must remove the factory center chrome tab before installing the lower center mounting bracket. The chrome tab will break off when you apply downward pressure onto it ("Denali" style shown, Mesh grille same). Once the tab has been removed, install the final lower mounting bracket.

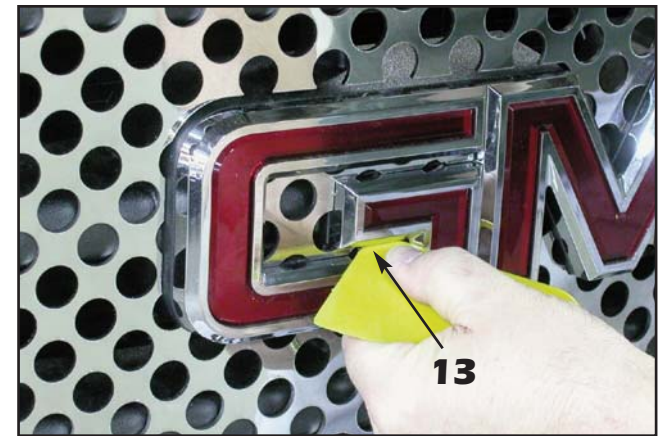




11. "Denali" style and Mesh grilles: Carefully remove the protective masking tape from around the grille frame. You can pull up or down and left to right on the E&G grille or the factory grille shell to increase the gap where the stainless steel grille meets the chrome plated factory shell. Peel back the tape over itself to help prevent the tape from breaking and getting caught behind the stainless steel frame. Once the tape is removed, tighten the mounting hardware. **DO NOT OVERTIGHTEN or you will indent the grille at the stud locations!**



12. "Denali" style and Mesh grilles: Thoroughly clean the back of the stainless steel "G" filler and install the supplied double faced tape where shown.



13. **NOTE:** E&G recommends slightly bending the bottom leg up for a tight fit against the plastic emblem base before installation. **"Denali" style grilles:** Once the double faced tape liner is removed, align the "G" filler into place and use a plastic tool (such as a squeegee or body filler spreader) or a screwdriver wrapped in electrical tape to press the filler into place.



14. "Denali" style grille: reinstall the radiator support panel cover to finish. The remainder of the manual covers the final steps for the Mesh grille.



15. Align the stainless steel emblem surround into place and press firmly at the stud locations to make impressions into the factory plastic grille.



16. Use a 3/16" drill bit to drill through the marks made in the previous step.





17. Drill (1/8" drill bit) and install the supplied #8 x 3/8" black truss head screw (where shown). This will keep the emblem surround from rocking in the recessed area of the "C".
18. Install the emblem surround, making sure that the studs pass through the holes drilled in Step 16. Install the supplied #8-32 ESNA half nuts to secure (not shown).



19. "Denali" style and Mesh grilles: Thoroughly clean the back of the stainless steel "G" filler and install the supplied double faced tape where shown.



20. Once the double faced tape liner is removed, align the "G" filler into place and use a plastic tool or screwdriver wrapped in electrical tape to press the filler into place. Remove any silicone that may squeeze out around the filler.



21. Reinstall the radiator support panel cover to finish.

#### WARRANTY INFORMATION:

E&G Classics, Inc. warrants its chrome parts and products to be free from defects in material, workmanship or finish for Twenty-Four (24) months from the date of shipment by E&G. This warranty is limited to the repair or replacement, at E&G Classics option, of the defective part or product.

#### To obtain performance under this warranty you must:

- 1.) Present your E&G unit to an authorized distributor in your area with proof of purchase.
- 2.) If no distributor is available, contact E&G Classics (address below) for authorization to return unit.
3. Returns - All unauthorized returns will be refused. Merchandise approved by E&G for return must have been purchased within the Twenty-Four (24) months. All returns require an authorization number obtained from E&G and the actual return must be accompanied by the written authorization form filled out completely. All merchandise must be inspected upon receipt and shortages reported within 48 hours. All merchandise must be in a resalable condition. Merchandise must be packed carefully in the original packing. If original packing is no longer usable, repack item(s) comparable to original manner. All returns are subject to a 25% handling charge. Special order items are not returnable. Defective merchandise must have an explanation of the problem. No credit will be issued unless invoice number and date of purchase has been supplied. Manufacturer shall be sole judge of defects in a product.
- 4.) UPS accounts - All returns must be prepaid. Do not send return shipments freight collect. Once E&G has made its decision and it is a claim against our warranty policy, E&G will credit incoming freight on damaged parts.
- 5.) No discontinued part or parts changed due to body style are returnable.

For Return Authorization, write or telephone: E&G Classics, Inc., 8910 McGaw Court, Columbia, MD 21045 (410) 381-4900 Attn: Return Department

You are responsible for inspecting all packages containing E&G Classics' parts and product immediately upon their receipt and must file a claim with the carrier for any damage disclosure by such inspection and notify E&G classics in writing at the above address of any such damage. This warranty does not extend to any of our products which have been subject to misuse, neglect, accident or have been altered or repaired in any way. This warranty does not cover any accidental or consequential damages for any breach of this warranty agreement. E&G Classics shall have no responsibility for any loss of time, inconvenience, commercial loss or consequential damage, nor shall E&G be liable for any injury or damage to persons or property by reason of any defect in material, workmanship or finish of its parts or products. This warranty gives you specific legal rights and you may also have other rights which may vary from state to state.