

IMPORTANT: PLEASE KEEP THIS INSTRUCTION MANUAL FOR FUTURE REFERENCE !

Copyright © 2016 by E&G Corporation, LLC. All right reserved. The reproduction or utilization of this work in any form or any electronic, mechanical, or other means, no known or hereafter invented, including xerography, photocopying, and recording, and in any information storage retrieval system is forbidden without written permission of owners.



2016 GMC Sierra SLT & SLE 3 Piece "Denali Style" Grilles



Upper Overlays - Will not fit base or factory Denali models

SLT Part # 1091-018U-16 / SLE Part #1091-058U-16

TOOLS REQUIRED Automotive grade masking tape, plastic clip removal tool, electric drill, 9/64", 5/32" and 1/16" drill bits, 1/4" nut driver, flat blade screwdriver, glass cleaner and soft, clean cloths. 07/05/2016

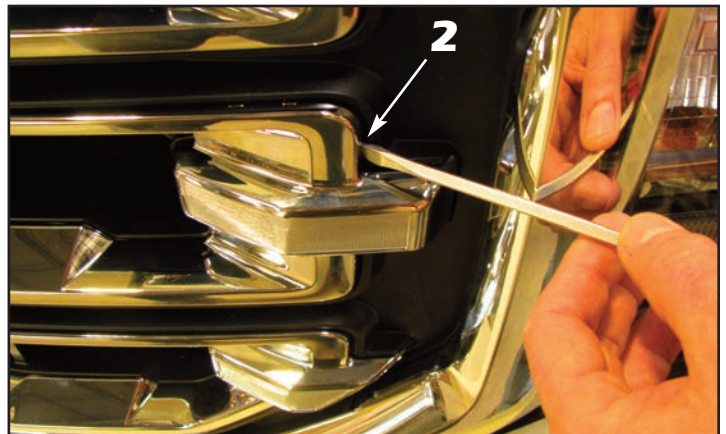
Notes to the Technician/Installer:

E&G is proud to present this package to you and reminds you that for technical information, contact technical assistance at 410-381-4900. Do not attempt the installation of any E&G product without first reading the detailed instructions. **E&G will not warrant damaged parts or the vehicle due to altered installation procedures.**

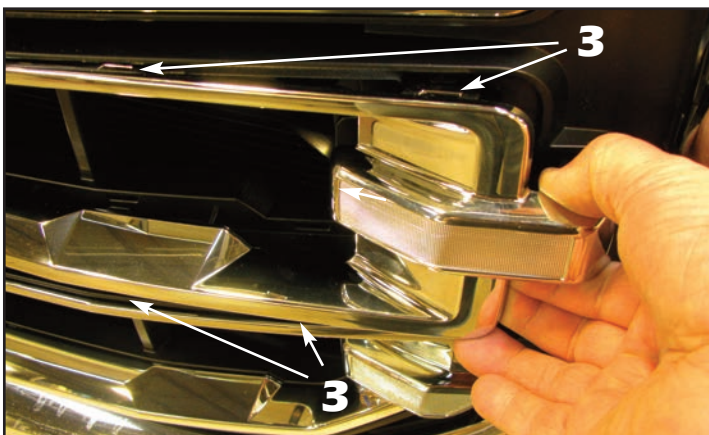
Important: If the factory grille on the vehicle you are working on does not have three chrome rectangular openings, please call technical support at 410-381-4900 before proceeding.



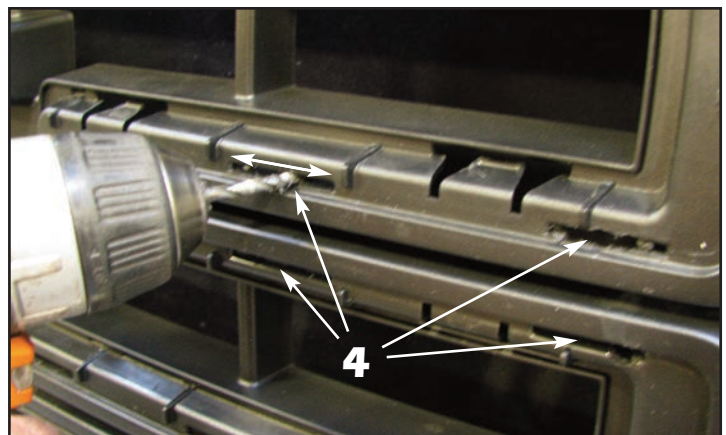
1. Apply masking tape to the painted filler between the grille and the bumper to help protect the paint finish.



2. Using a small flat blade screwdriver, begin prying out the factory chrome mouldings starting at the sides.

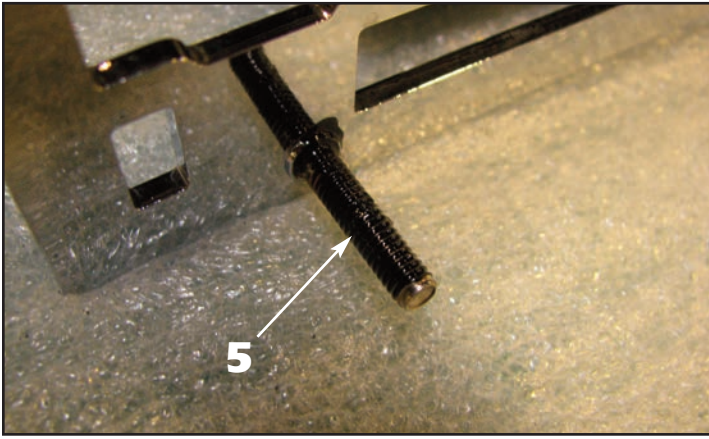


3. Continue to pull the mouldings off the factory grille. The mouldings will either unclip or the mounting tabs will break off. These mouldings are not reused.

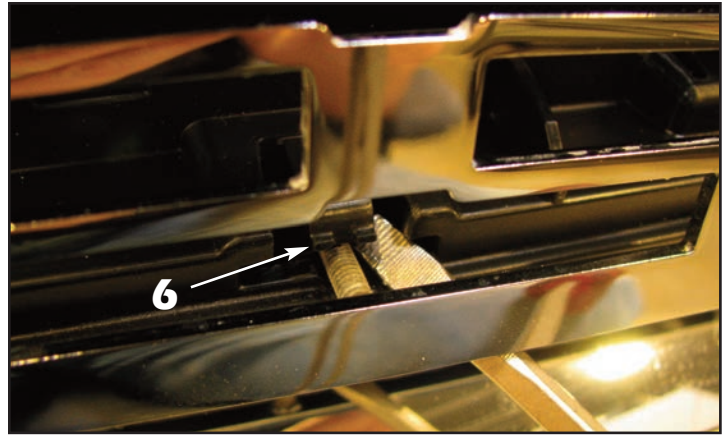


4. For "SLE" grilles only: Use a 5/32" drill bit to enlarge the factory mounting slots (where shown, each side) prior to E&G grille section alignment.

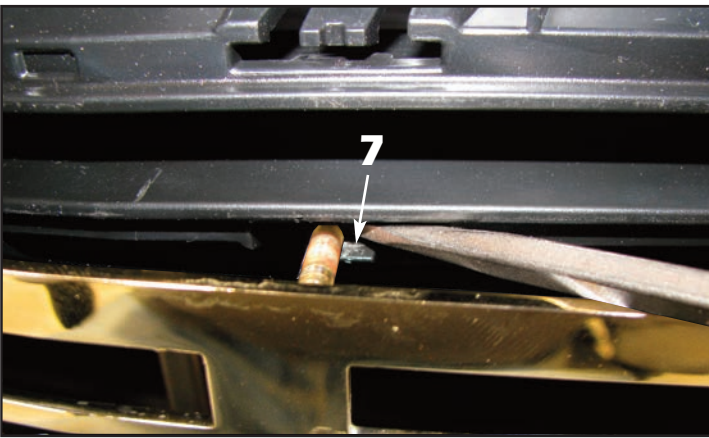




5. Paint all of the lower studs on all three grille sections with black paint to help conceal them once the grille sections are installed.



6. Begin aligning the upper grille bottom section first. Align the center two studs where the factory retaining clips are located. Insert a small flat blade screwdriver to pry the tab away from the stud and press in on the grille to begin seating the studs. Work from the center out, alternating from bottom to top studs.



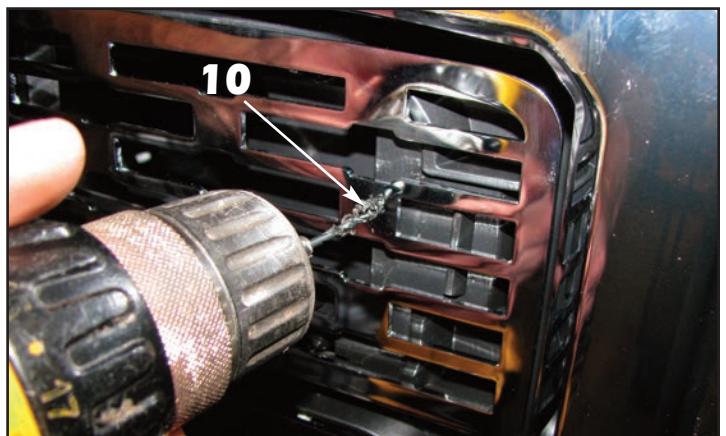
7. Continue aligning the studs with the retaining clips. Move the clips as needed to press the grille tightly against the factory insert. **Make sure that once the upper grille bottom section is pressed into place that it is perfectly centered inside the factory chrome surround.**



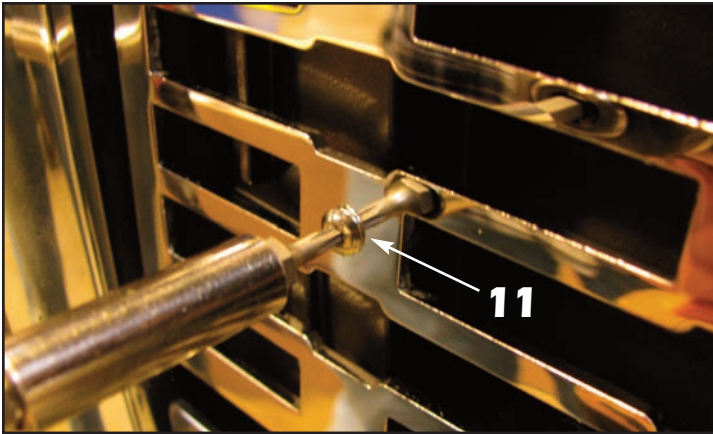
8. Install the upper grille center section using the same procedure outlined in **Steps 6 and 7**. Make sure that the edges of the grille align with one another. You can use a small section of wood or plastic and insert it into any of the grille openings and tap the wood or plastic with a mallet to adjust the side to side gap (alignment).



9. Install the upper grille top section using the same procedure outlined in **Steps 6 and 7**.



10. Once properly aligned with the factory grille surround, use a 1/16" drill bit to drill through the six (6) mounting holes in the E&G grilles. Drill through the center of the holes, do not allow the drill bit to touch the E&G grille. **Apply a rust preventing sealer to the hole in the grille as a precautionary measure against rust.**



11. Install the supplied #6 x 3/4" Torx pin head screws to secure the outer edges of the E&G grilles and finish the installation. Do not overtighten or you could indent the grilles at the screw locations or strip out the holes in the factory plastic grille.

SLT Upper 3 Piece "Denali" Style Grille Part #1091-0185U-16

Quantity:	Description:	Part Number:
1	SLT Denali Style Upper Top Grille Overlay	1091-018A-16
1	SLT Denali Style Upper Center Grille Overlay	1091-018B-16
1	SLT Denali Style Upper Bottom Grille Overlay	1091-018C-16
1	Installation Hardware Kit	1091-0182-16
1	Torx T-10 Pin Head Tool	1999-0107-00
6	#6 x 3/4" Torx Pin Head Screws	1999-0108-00

SLE Upper 3 Piece "Denali" Style Grille Part #1091-0585U-16

Quantity:	Description:	Part Number:
1	SLE Denali Style Upper Top Grille Overlay	1091-058A-16
1	SLE Denali Style Upper Center Grille Overlay	1091-058B-16
1	SLE Denali Style Upper Bottom Grille Overlay	1091-058C-16
1	Installation Hardware Kit	1091-0182-16
1	Torx T-10 Pin Head Tool	1999-0107-00
6	#6 x 3/4" Torx Pin Head Screws	1999-0108-00



SLT shown, SLE similar.

E&G Warranty Information: E&G Corporation, LLC. warrants its parts and products to be free from defects in material, workmanship or finish for Thirty-Six (36) months from the date of shipment by E&G. This warranty is limited to the repair or replacement, at E&G's option, of the defective part or product. Full E&G warranty information is available online @ www.egclassics.com.

E&G Product Returns: Please contact the authorized E&G Dealer where you purchased our product from in regards to any workmanship or warranty claims. All items returned to E&G must have a return authorization number issued by us for inspection or a defective product and or warranty issue. All merchandise sent back to E&G without proper paperwork or authorization will be rejected and returned.