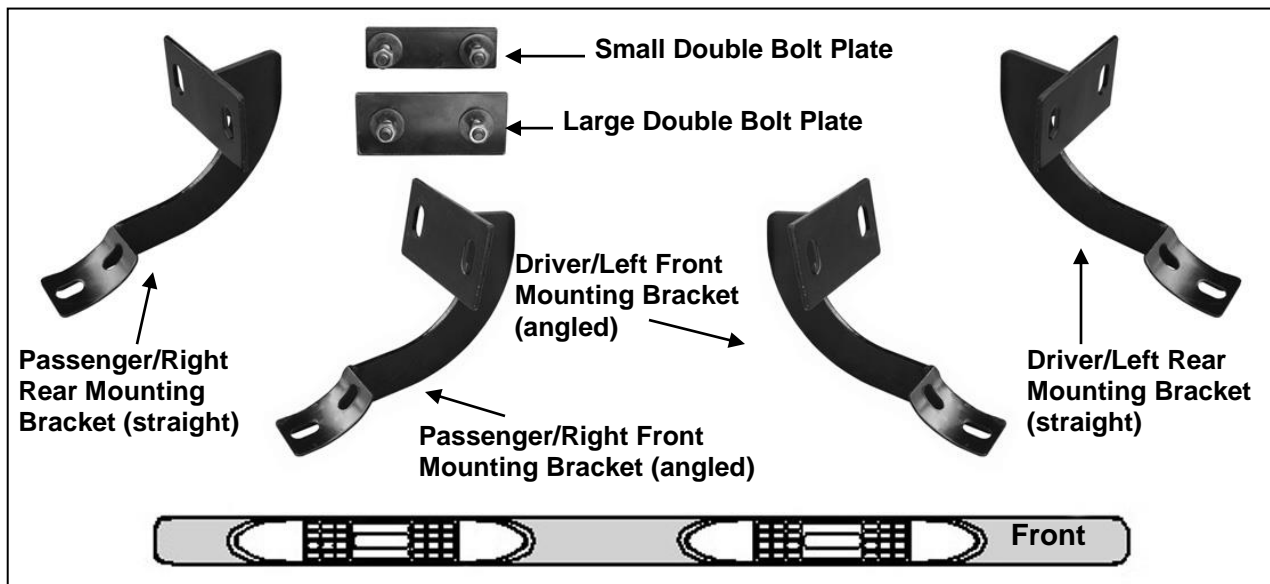




## 4.5 in. Oval Straight Side Step Bar 99-03 F150 SuperCab

### PARTS LIST:

1	Driver/Left Sidebar	8	10mm Lock Washers
1	Passenger/Right Sidebar	8	10mm x 34mm OD x 3mm Flat Washers
1	Driver/Left Front Mounting Bracket (angled)	8	10mm Hex Nuts
1	Passenger/Right Front Mounting Bracket (angled)	8	8mm x 25mm Hex Bolts
1	Driver/Left Rear Mounting Bracket (straight)	8	8mm x 24mm OD x 2mm Flat Washers
1	Passenger/Right Rear Mounting Bracket (straight)	8	8mm Lock Washers
4	10mm x 35mm Large Double Bolt Plates	2	10mm Plastic Retainers (3-door only)
1	10mm x 35mm Small Double Bolt Plates (use for 3-door only)		



### PROCEDURE:

- 1. REMOVE CONTENTS FROM BOX. VERIFY ALL PARTS ARE PRESENT. READ INSTRUCTIONS CAREFULLY BEFORE STARTING INSTALLATION.**
- Start installation from under the driver/left side of the vehicle. Remove the large oval rubber cover located on the inner side panel toward the front, **(Figure 1)**. Insert (1) Double Bolt Plate into the oval hole, **(Figure 2)**, and pull it back into position against the inner body panel, **(Figure 3)**.
- Select the driver side front Mounting Bracket. **NOTE:** The Front Bracket mounting plate is angled, **(Figure 5)**, the mounting plate on the Rear Bracket is straight up and down, **(Figure 6)**. Hold the Bolt Plate in place and slide the Bracket over the threaded studs, **(Figure 7)**. Secure the Bracket to the Bolt Plate with the included (2) 10mm Lock Washers, (2) 10mm Flat Washers and (2) 10mm Hex Nuts, **(Figure 7)**. Leave hardware loose at this time.
- Repeat **Steps 2 – 3** for driver side Rear Bracket installation. **NOTE:** A Narrow Double Bolt Plate has been included. On 3-door models, insert the Bolt Plate into the large, round hole and

line up with the smaller round hole, **(Figures 4 & 7)**. Use the included 10mm Plastic Retainers to hold the Bolt Plate in position and secure the Bracket as previously described in **Step 2**.

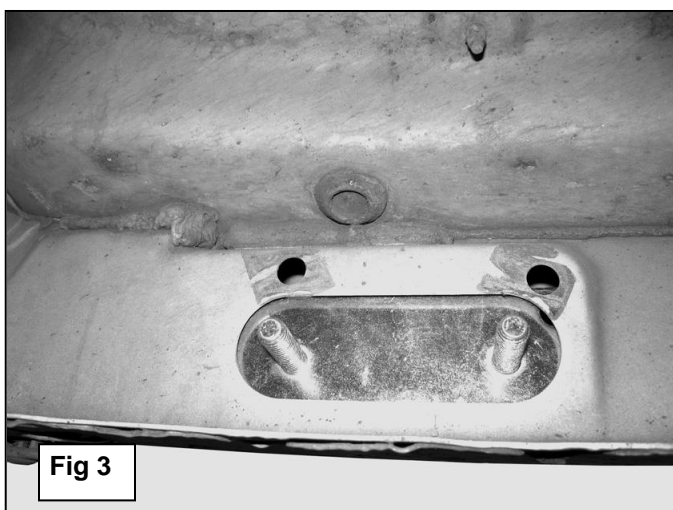
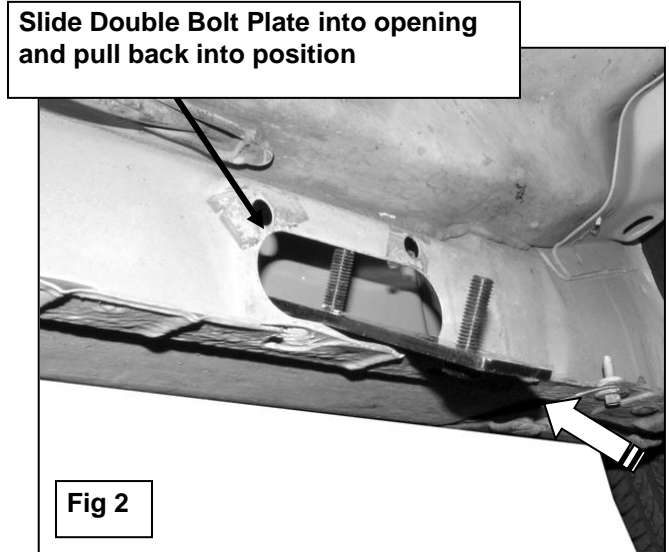
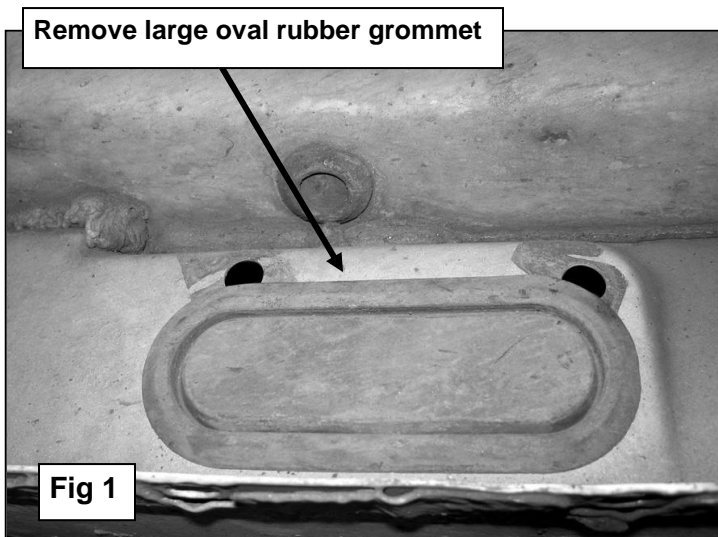
5. Once the Mounting Brackets have been installed, carefully unpack and separate the Driver and Passenger Sidebar. Attach the Sidebar to the Mounting Brackets with the included (4) 8x25mm Hex Bolts, (4) 8mm Lock Washers and (4) 8mm Flat Washers, **(Figure 7)**. Do not tighten hardware at this time.
6. Level and adjust the Sidebar and tighten all hardware at this time.
7. Repeat steps 2 – 6 for passenger Sidebar.
8. Do periodic inspections of the installation to make sure all hardware is secure and tight.

**To protect your investment**, wax this product after installing. Regular waxing is recommended to add a protective layer over the finish. Do not use any type of polish or wax that may contain abrasives that could damage the finish.

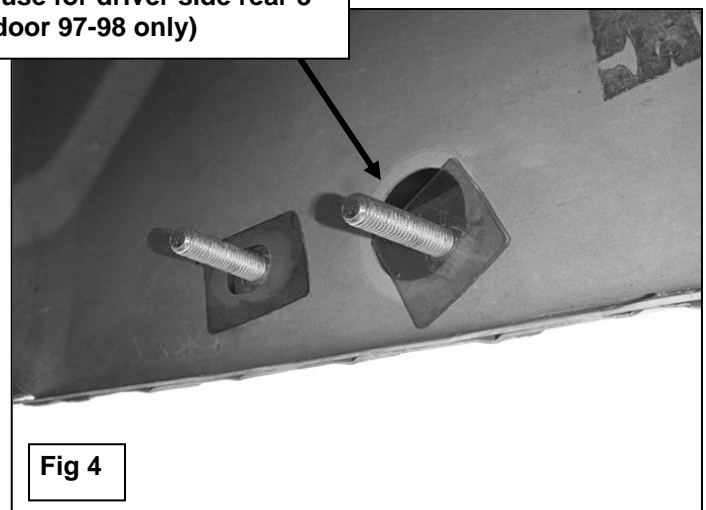
**For stainless steel:** Aluminum polish may be used to polish small scratches and scuffs on the finish. Mild soap may be used also to clean the Sidebar.

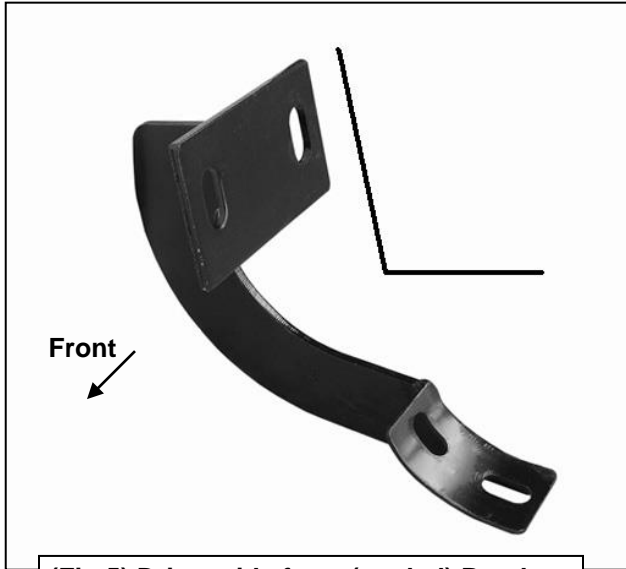
**For gloss black finishes:** Mild soap may be used to clean the Sidebar.

### Front Bolt Plate Installation Example

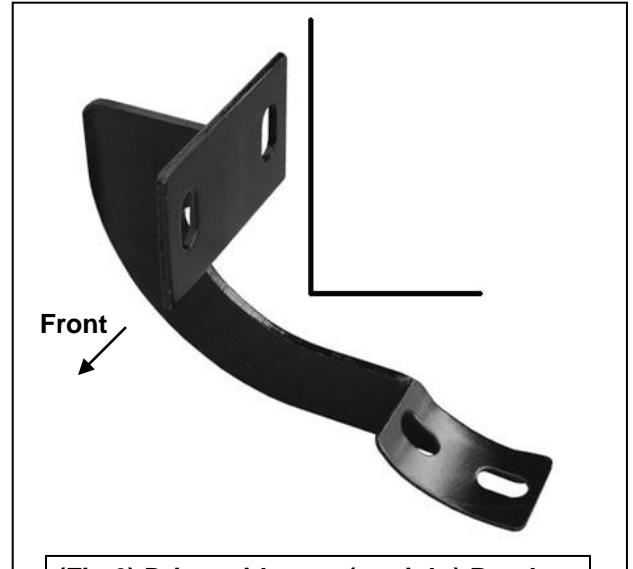


Narrow Double Bolt Plate with Plastic Retainers  
(use for driver side rear 3-door 97-98 only)

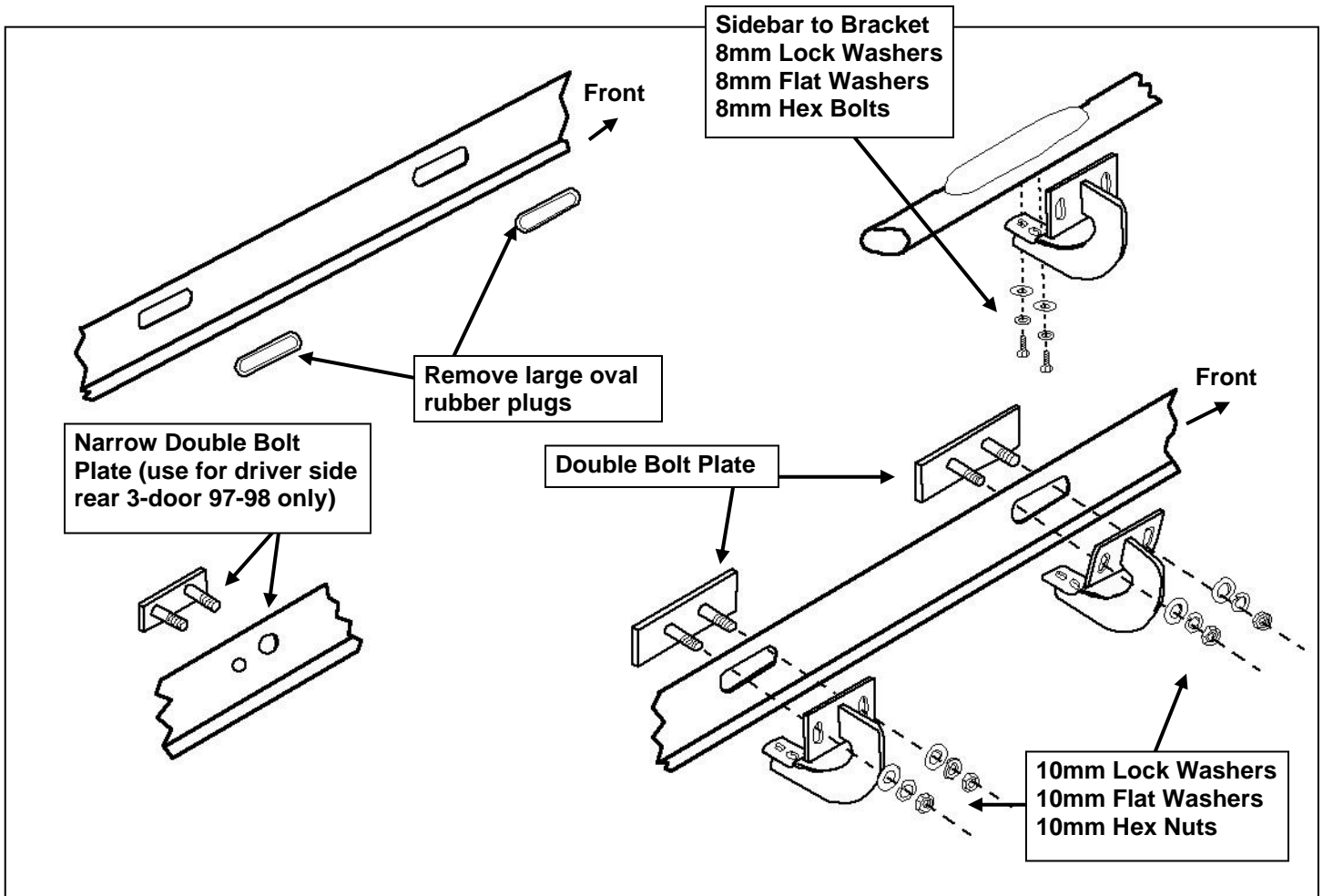




(Fig 5) Driver side front (angled) Bracket



(Fig 6) Driver side rear (straight) Bracket



(Fig 7) Driver/Left Side Installation Illustrated