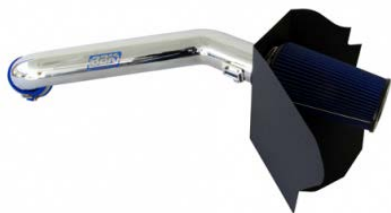




Cold Air Intake Kit

Part # 1744



Special Tools

Required:

- No special tools required

Install Time:

Approximately
1 Hour

Difficulty:

1 out of 5

Follow these instructions carefully to ensure correct fitment and operation.

STEP 1

- Disconnect the negative battery terminal.

STEP 2

- Unplug the Mass Air Sensor and disconnect the breather tube.

STEP 3STEP 4



- Remove the four retaining bolts for the stock air intake at the intake manifold. Remove the bolt just forward of the power steering reservoir that holds the inlet tube. Remove the assembly from the vehicle.



- Install the BBK filter shield on the driver side inner fender. Use supplied bolts and washers to mount the shield.

STEP 5



- Install the provided 3/8" diameter by 2" long aluminum adapter tube. Push the long end into the port on the side of the provided blue hose connector. This is the new breather tube connection point.



Join our Facebook page
www.facebook.com/bbkperformance



Follow us on Twitter
[@bbkperformance](https://twitter.com/bbkperformance)



Check us out on Youtube
www.youtube.com/bbkperformance

GO TO NEXT PAGE

WWW.BBKPERFORMANCE.COM

For any questions, email us:

tech@bbkperformance.com

installation instructions

1

IMPORTANT: All appropriate safety equipment and gear must be used during the installation of this or any BBK Performance products or any time you work on a vehicle. BBK Performance Inc. accepts no responsibility for injuries or damage caused by or during the installation of this product.

INS-172

Cold Air Intake Kit

Part # 1744



STEP 6

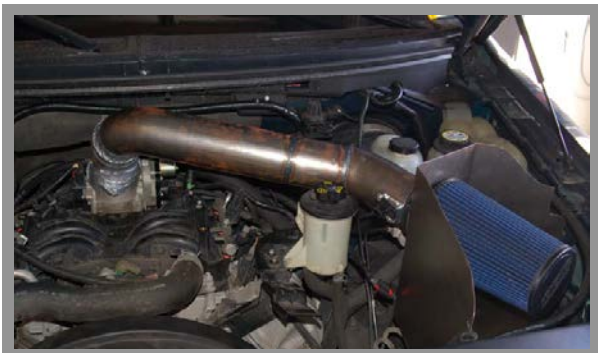


- Install the blue connector and two clamps onto the throttle body.

STEP 7

- Remove the Mass Air Sensor from the stock inlet tube. Install the sensor into the aluminum mount on the BBK inlet tube with the provided 4mm button head screws.

STEP 8



- Install the chrome inlet tube into the hole in the filter shield then on to the connector on the throttle body. Rotate the inlet tube for the best position and tighten the clamps at the blue connector. Install the filter on to the end of the inlet tube and tighten the clamp.

STEP 9

- Connect the plastic breather tube to the aluminum fitting installed in the side of the blue connector.

STEP 10

- Connect the Mass Air Sensor plug to the sensor.

STEP 11

- Install the supplied sponge seal on the top of the filter shield. This helps seal the shield and the hood.

STEP 12

- Reconnect the negative battery terminal.

Hardware Included

- BKT276 Filter Housing (1pc)
- SCP050 Air Filter (1pc)
- CHD341 3" Blue Coupler (1pc)
- SCP072 Sponge Trim (1pc)
- KIT1744
 - CHD584 Aluminum Fitting (1pc)
 - HDW042 Hose Clamp (2pcs)
 - HDW102 Screw, BHCS M4-.7x10 (2pcs)
 - HDW247 Nylock Nut M6x1.0 (1pc)
 - HDW273 Flat Washer 6mm (2pcs)
 - HDW276 Screw BHCS M6-1.0x25mm (2pcs)



Join our Facebook page
www.facebook.com/bbkperformance



Follow us on Twitter
 @bbkperformance



Check us out on Youtube
www.youtube.com/bbkperformance

WWW.BBKPERFORMANCE.COM

For any questions, email us:

tech@bbkperformance.com

installation instructions

2

IMPORTANT: All appropriate safety equipment and gear must be used during the installation of this or any BBK Performance products or any time you work on a vehicle. BBK Performance Inc. accepts no responsibility for injuries or damage caused by or during the installation of this product.

INS-172