



FORD F-150 GRILLE

2009-2012 FORD® F-150® GRILLE

GRILLE INSTALLATION INSTRUCTIONS

2 X 6" SR-SERIES

1 X 10" SR-SERIES



KIT INCLUDES

- (1) Rigid Industries LED Grille
- (12) #8x32x1/2" Stainless Steel Button Head Cap Screws
- (12) Mounting Nuts - #8x32 Nylon Insert Lock Nuts
- (12) #6x1/2" Self-Tapping Screws (REVA)
- (6) Light Mount Washers - 1/4" Flat Washers

IMPORTANT

It is strongly recommended that this product be installed by a professional.

Installation of this product requires cutting of your factory installed grille. Your factory grille will be unusable after it has been cut.

This product may have more surface area than your factory grille. It may reduce airflow. Reduction in airflow can potentially lead to overheating or other mechanical issues.

Always disconnect battery before servicing any fuses or electrical system.

STEP 1

Remove grille shell from vehicle



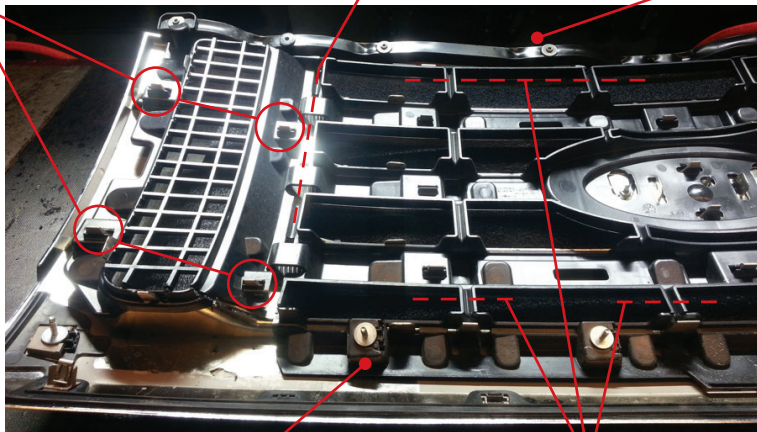
STEP 2

- 2a. Carefully remove the metal bar on the bottom of the grille (held in with screws) and the plastic hood attachment piece on the top of the grille (held in place with plastic tabs). Both of these must be re-installed, so make sure you don't damage them.
- 2b. Remove the outer mesh pieces by cutting off the mount tabs and cutting through the plastic strips which attach them to the center mesh.
- 2c. Now remove the center mesh by cutting the plastic ribs which attach it to the grille shell.
- 2d. Use a file or a Dremel® tool to take down any sharp edges on the remaining grille shell.

Cut through these plastic strips.

Cut these tabs with tin snips.

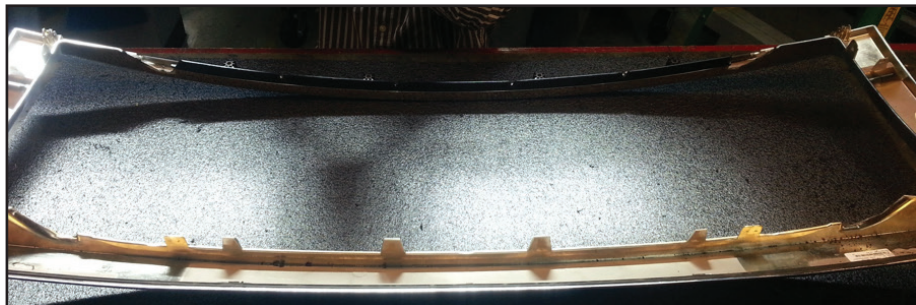
Remove this metal bar and set aside.



Remove this plastic metal strip by carefully unsnapping the tabs.

Cut through these plastic ribs.

Grille should look like this after cutting.



STEP 3

Your grille has been bent to match the contour of the 2009-2012 Ford® F-150® grille shell. It was tested in a sample grille shell and adjusted by hand to mount as cleanly as possible. However, the metal is easily bendable when not attached to a frame, so it may have slightly flattened or deformed during storage/shipment. We recommend that you adjust the bends in your grille to ensure a clean fit.

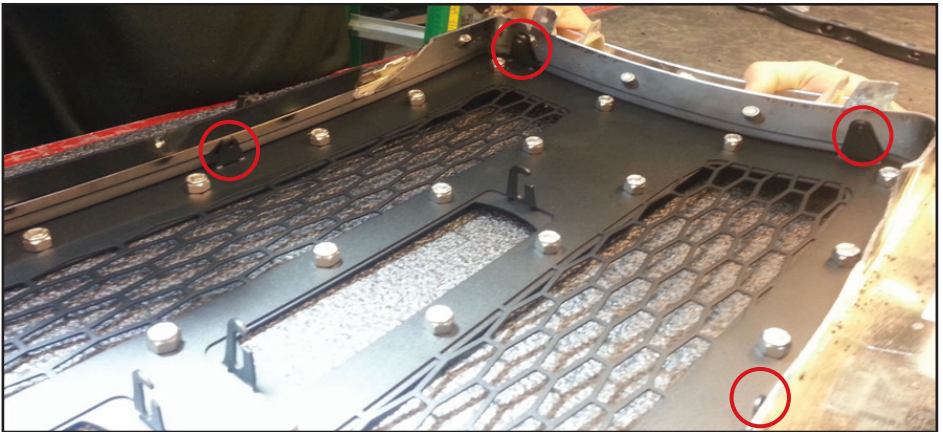
- 3a. Place grille shell face up on table. Set your new grille in place. It will extend over the grille shell.
- 3b. Examine the mounting tab locations. Note where the face of the grille will sit in each location. Hold the grille in place as you intend to mount it and look for any gaps.
- 3c. Make smooth, large radius bends by gently pressing the grille over your knee or any soft surface. Make sharp, small radius bends using pliers over a thick towel. Rework the grille as needed to get the fit you want.

STEP 4

Your new grille attaches to your factory grille shell using stainless steel screws through the mounting tabs. In most mounting locations, you will simply need to drill a hole through the plastic and secure the nut & bolt. However, some mounting locations may be more challenging. It may be necessary to create space for the nut and bolt by removing some plastic with a Dremel® tool. In some cases, it may not be possible to use a nut & bolt. We have provided self-tapping screws to be used as needed but you should try to use a nut & bolt wherever possible.

STEP 5

- 5a. Place grille shell face down on table. Set your new grille in place. Make sure it is centered on the grille shell and situated how you want it.
- 5b. Examine the mounting tab locations. Note where the bolt will go in each location. Trim plastic from the area outside the mount location as needed.
- 5c. Bend the mounting tabs inward or outward as needed to get them all flush with the grille shell surface. If this is not done, your grille may be pulled out of the desired positioning when you start to tighten the screws.
- 5d. Drill holes through grille shell at each mount location (unless using self-tapping screws).
- 5e. Insert and tighten all hardware.



Mounting Tabs

STEP 6

- 6a. Install your Rigid Industries LED Lights onto the light mount tabs on your grille. It may be necessary to bend the tabs inward or outward to get a flush fit (use pliers over a thick towel). Just aim the lights forward at this point. You will adjust the aim once the grille is mounted on the vehicle.
- 6b. Reattach the grille shell to your vehicle.
- 6c. Wire your lights according to the installation instructions included with your light. Take care to avoid heat sources and sharp or abrasive surfaces.
- 6d. Once your lights are wired, position your vehicle on a flat surface facing a wall. Adjust aim on your lights so that the beam is pointing in the vertical direction you desire.





**Your installation is now complete.
Welcome to the Rigid Nation!**



WARRANTY INFORMATION

Rigid Industries warrants that this product will be free from defects in material and workmanship. If you believe your Rigid Industries product is defective, it must be returned to Rigid Industries for inspection by our warranty claims department. If, after inspection, Rigid Industries verifies that the defect was not caused by negligence, abuse, unauthorized repair or disassembly, Rigid Industries will determine whether the product will be repaired or replaced in accordance with Rigid Industries Limited Lifetime Warranty*.

Warranty Periods:

- All LED Lights – Limited Lifetime
- Accessories and Mounts – 2 years

Warranty Coverage:

To begin your warranty claim, you must have a Return Merchandise Authorization (RMA) number. To get your RMA number, please contact our warranty department by phone at 480-655-0100 ext. 1008, or by filling out the Return Merchandise Authorization Form on our website.

All of the following will immediately void all warranties:

- Customer negligence – The customer has modified the light and/or is not using it for the recommend application.
- Customer abuse – Damage to the light beyond normal wear and tear.
- Repair work done by unauthorized personnel without Rigid Industries' approval.
- If the light has been opened or any screws have been removed.

All warranties are non-transferable. Warranty terms and policies are subject to change without notice.

*For all information regarding the Rigid Industries' Limited Lifetime Warranty please call 855-760-5337 ext. 1008, email warranty@RigidIndustries.com, or visit our warranty page online at RigidIndustries.com/Warranty.

FOLLOW US ON FACEBOOK AT
[facebook.com/RigidIndustries](https://www.facebook.com/RigidIndustries)

779 N Colorado St., Gilbert, AZ 85233 • 855-760-5337 • www.rigidindustries.com

IS-40558 Rev3

Rigid Industries and SR-Series are registered and/or unregistered trademarks of JST Performance, Inc. d/b/a Rigid Industries.