

## **Magnaflow MF Series Cat-Back Exhaust – Dual Side Exit** **Before Rear Tire(11-14) 5.0L F150**

**Time Required for Install:** Typically 1-2 Hours.

\*\*\*\*\*Special Install Instructions\*\*\*\*\*

I performed this install without raising the vehicle. Allow your exhaust to cool completely before attempting install on exhaust related components.

### **Tools Required:**

- Impact Driver (Pneumatic preferred)
- 3/8" socket wrench
- 13mm socket
- 10mm socket
- 5/8" deepwell socket
- 11/16" combination wrench
- Electric Sawzall with blade for cutting steel

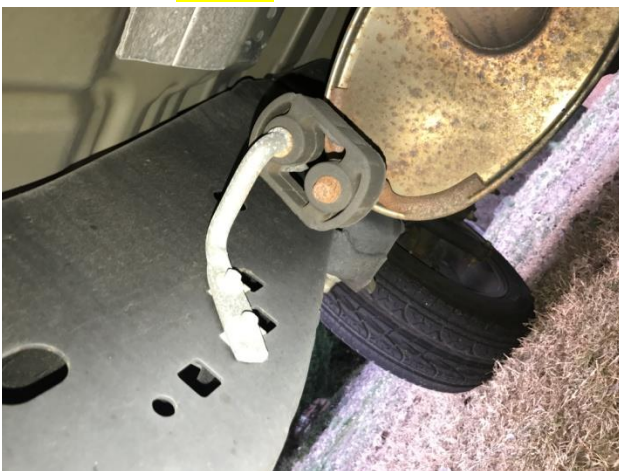
**Installation Data: This method does involve cutting the factory exhaust to aid in removal and obtaining the factory flange nuts. If at all not comfortable with either STOP!!! And either get assistance or have a professional complete the work.**

## **Removal Procedure:**

1. Park the vehicle on a flat surface and place it in park, place the emergency brake on and use wheel chocks to secure the vehicle from inadvertent shifts in movement during work.
2. If you choose to raise the vehicle consult you manufacturer's literature for jacking instructions.
3. Begin by loosening and removing the two flange bolts. The bolt head size is **13mm.**



4. Next Remove the Factory hanger located next to inlet of the muffler. The bolt head size is **10mm.**



5. On the ground as I have done the install the stock exhaust will not come out in one piece. Cutting the exhaust to remove will be necessary. I made my cut about 3-4" behind the outlet of the stock muffler.



6. Once cut the remaining pieces can be slide out and put to the side. The stock exhaust inlet flange you will notice has the nuts pressed into flange.
7. The nuts will need to be recovered from this flange to complete the install. Make two diagonal cuts on the flange to be able retrieve the nut. Make sure not to make your cuts to deep or you will damage the nuts. (SEE IMAGE, NEXT PAGE)



8. With the necessary Hardware recovered, you are now ready to begin the Install Procedure.

### **Install Procedure:**

1. Start by connecting the inlet pipe to the downpipe utilizing the factory hardware. Leave the inlet pipe loose as so that it can be rotated and have movement to aid in installation of the other components.
2. The rest of the installation will be based on the SuperCrew Cab style since I did the install on that particular style.
3. There will be a 2.5" extender pipe that needs to be in place between the inlet pipe and the muffler inlet. Pictured Here.



4. Place the muffler into the inlet pipe extender ENSURE CLAMPS ARE INSTALL so you don't have to remove the exhaust once in place.
5. Install the provided hanger assembly onto the muffler hanger.
6. Once installed the muffler is ready to hang into place, the Magnaflow provided hanger goes in this orientation in a frame hole just ahead of the leaf spring before the tire. The Nuts on the hanger will be an **11/16"**



7. Once the exhaust is hung into the desired position start tightening the hardware from the end of the exhaust working your way towards the flange. The clamps take a **5/8" deepwell socket** and are factory recommended to be torque between **30-40 ft/lbs** to ensure a proper gas-tight seal.
8. Once all hardware is tight, its time to shoot the coal to it and see how see sounds!!!



Installation Guide Created by AmericanMuscle Customer Michael Montana on 1/23/2017