



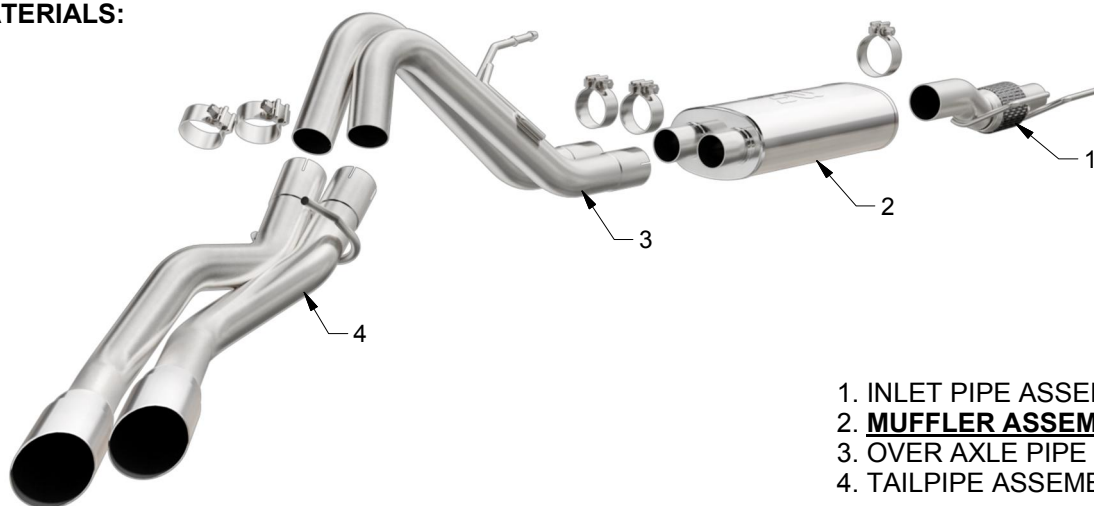
# INSTALLATION INSTRUCTIONS



2015 FORD F-150 2.7L

PART NO. 19053

## BILL OF MATERIALS:



1. INLET PIPE ASSEMBLY
2. **MUFFLER ASSEMBLY**
3. OVER AXLE PIPE ASSEMBLY
4. TAILPIPE ASSEMBLY



WEAR SAFETY  
GLASSES



READ INSTRUCTIONS  
THOROUGHLY BEFORE  
INSTALLING PRODUCT

## SHOP SUPPLIES:



SPRAY LUBRICANT

To ease removal of existing exhaust components (especially on older vehicles) spray penetrating lubricant on all fasteners and hangers/insulators that will be loosened or removed and let soak before disassembly.

## HARDWARE KIT:

1. [4] 2.50" Clamp
2. [1] 3.00" Clamp

## MINIMUM REQUIRED TOOLS:



15mm

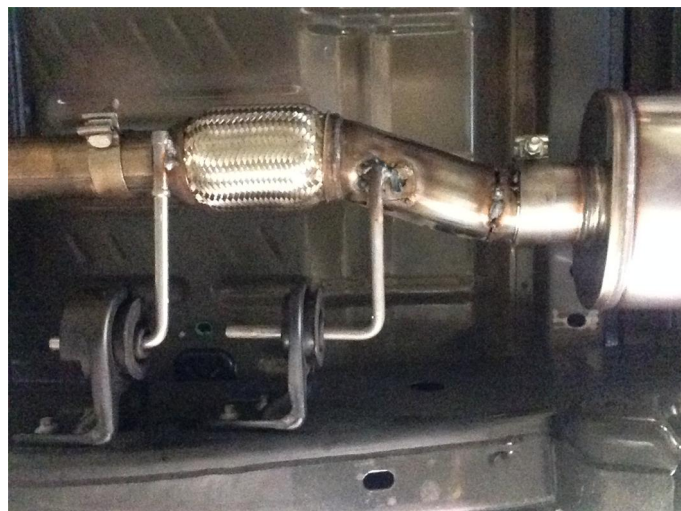


Hanger Tool  
(Or Pry Bar)

## INSTALLATION INSTRUCTIONS



**Step 1.** To remove the OEM exhaust system, loosen the clamp attaching the systems inlet pipes to the catalytic converter outlet pipes. Disengage all welded hangers from the OEM rubber insulators. Do not discard the OEM fasteners or damage the rubber insulators as they will be needed to mount your new MAGNAFLOW system.



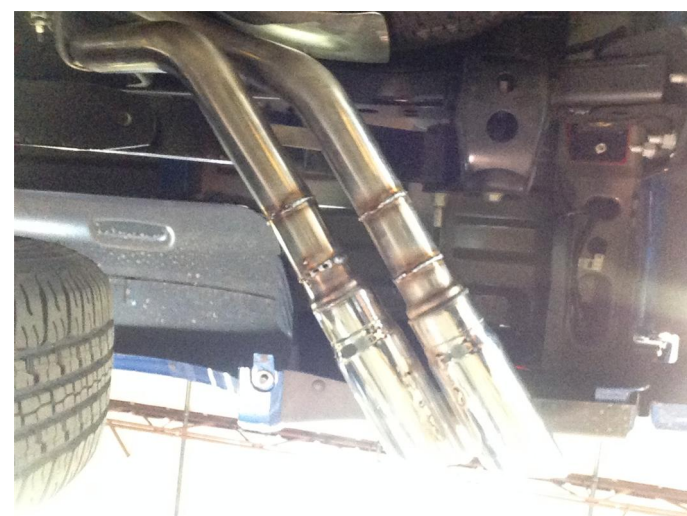
**Step 2.** Install the new system by attaching the Inlet Pipe Assembly to the OEM catalytic converter outlet pipes using the existing clamp and hardware. Locate the welded hanger to the rubber insulator. Leave all clamps and fasteners loose for final adjustment of the complete system once installed.



**Step 3.** Install the Muffler Assembly to the Inlet Pipe Assembly using the supplied 3.00" clamp.



**Step 4.** Install both the Over Axle Pipe Assembly and Tail Pipe Assembly using the supplied 2.50" clamps. Locate the welded hangers to the OEM rubber insulators.





**Step 5.** Once a final position has been chosen for the new exhaust system, evenly tighten all clamps from front to rear using the torque specifications on page one of the instructions. Inspect all fasteners after 25-50 miles of operation and re-tighten if necessary.